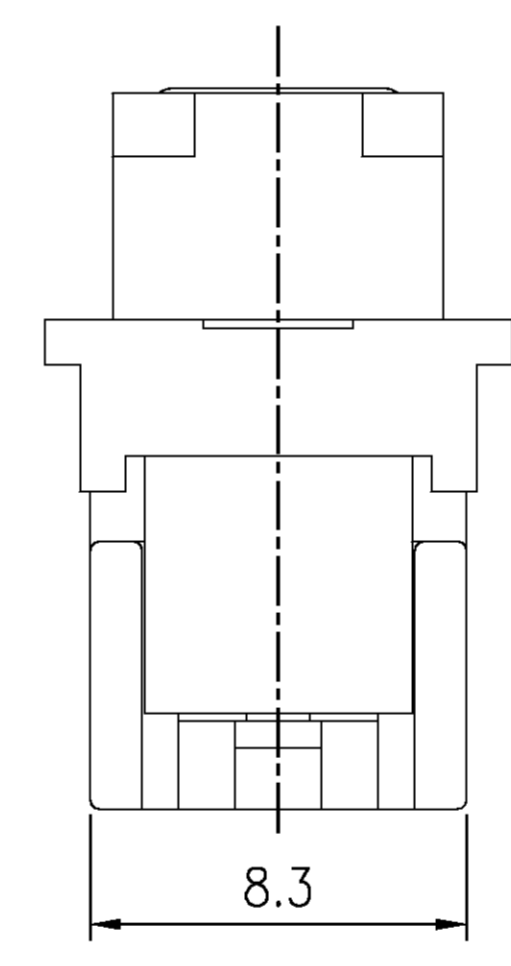
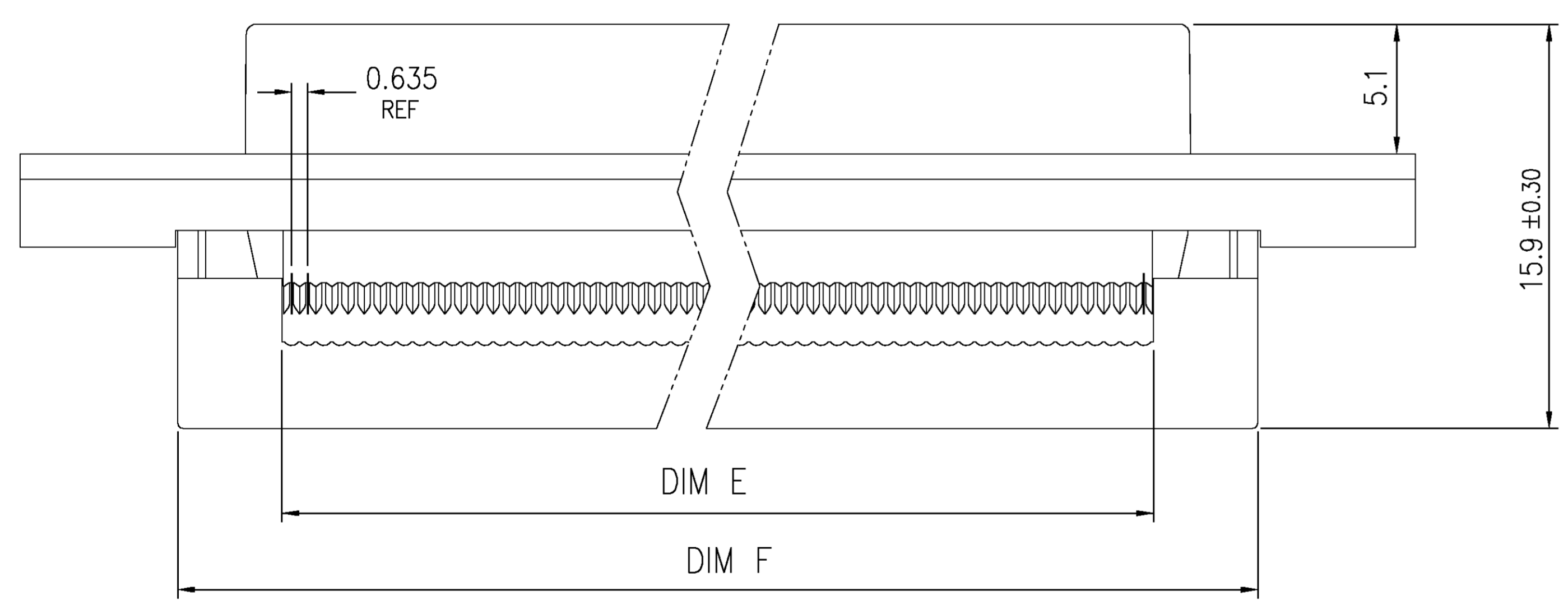
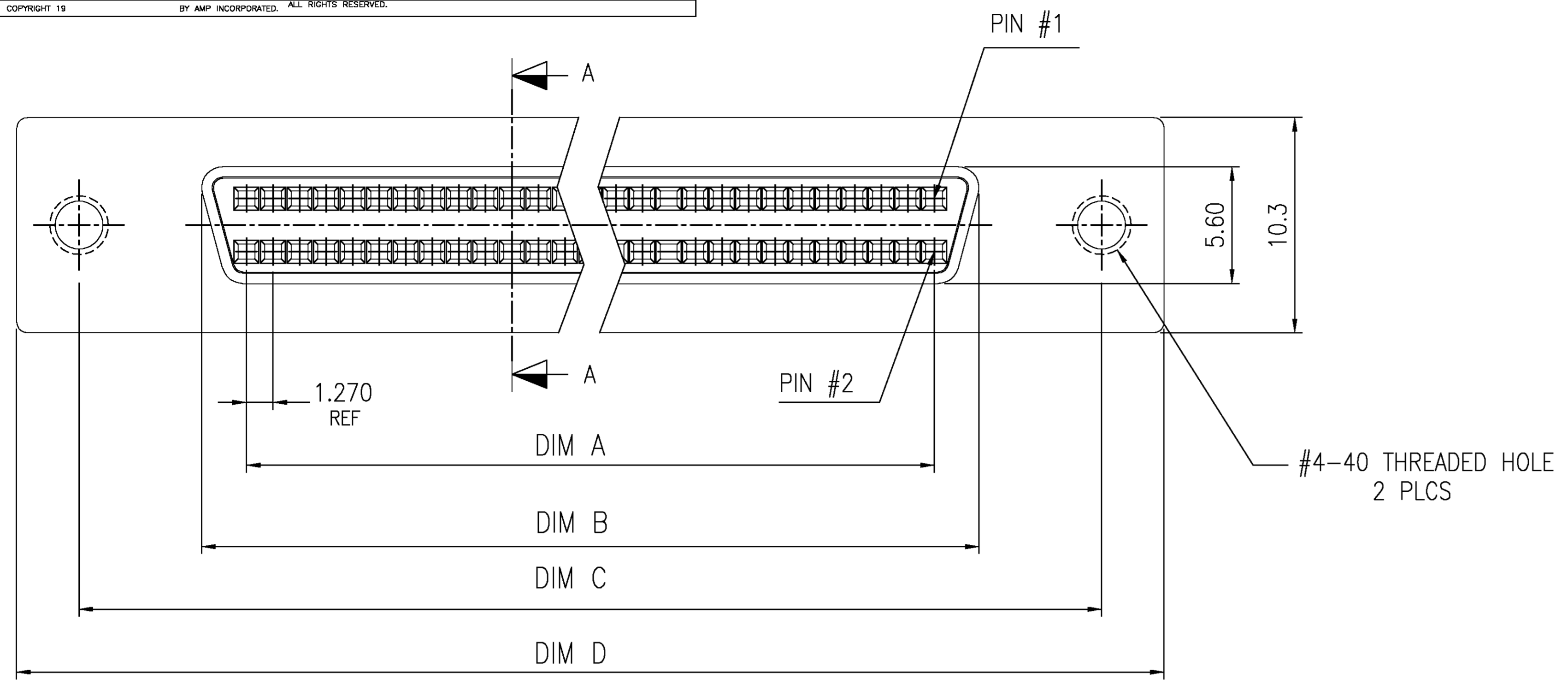
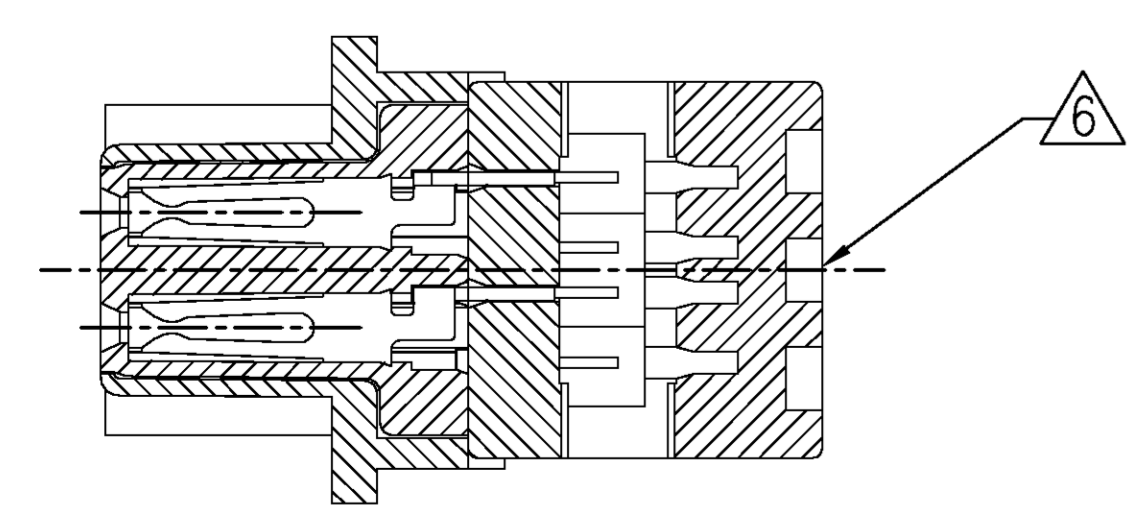


LOC		DIST		REVISIONS			
GP	OO	P	LTR	DESCRIPTION	DATE	DMY	APVD
		D		REVISED PER EC OS13-0165-03	30APR03	JG	CC



- ① HOUSING: PBT, 30% GLASS REINFORCED, UL94V-0.  
CONTACTS: PHOS. BRONZE.
- ② CONTACTS: GOLD PLATED (SEE TABLE) ON MATING END, 1.27um [.000050in] MIN BRIGHT TIN-LEAD ON TERMINATION AREA, ALL OVER 1.27um [.000050in] MIN NICKEL ON ENTIRE CONTACT.
- ③ BRACKET: ZINC ALLOY. PLATING: 1.27um [.000050] MIN. NICKEL.
- ④ SPECIFICATIONS:  
CURRENT RATING: 1A.  
VOLTAGE RATING: 30V AC.  
INSULATION RESISTANCE: 1000 MILLIOHMS MIN. AT 500V DC.  
CONTACT RESISTANCE: 55 MILLIOHMS MAX.  
DIELECTRIC WITHSTANDING VOLTAGE: 250V AC FOR 1 MINUTE.  
CONTACT RETENTION FORCE: 600 gf MIN.  
TOTAL INSERTION FORCE: 4 Kgf MAX. (FORCE DEPENDENT ON MATING CONNECTOR)  
TOTAL WITHDRAWAL FORCE: 1.5 Kgf MAX. (FORCE DEPENDENT ON MATING CONNECTOR)  
WIRE COVER RETENTION FORCE: 6 Kgf MIN.  
OPERATION TEMPERATURE: -55°C TO 85°C.
- ⑤ FOR USE WITH 30 & 32 AWG FLAT RIBBON CABLE.  
SELECTION OF COMPATIBLE RIBBON CABLE AND APPLICATION TOOLING FOR USE WITH THIS PRODUCT IS THE RESPONSIBILITY OF THE USER.
- ⑥ AMP LOGO LOCATED ON THIS SURFACE.
- 7. SPECIFICATIONS SUBJECT TO CHANGE WITHOUT NOTICE.  
CONTACT AMP FOR THE LATEST SPECIFICATIONS.
- ⑧ CONTACTS: GOLD PLATED (SEE TABLE) ON MATING END, 1.27um [.000050in] MIN BRIGHT TIN ON TERMINATION AREA, ALL OVER 1.27um [.000050in] MIN NICKEL ON ENTIRE CONTACT.



SEC. A-A

	51.5	43.30	63.90	57.93	46.20	41.91	TRAY	BLACK	0.76um [.000030in]	⑧	6-390378-7	68
OBSOLETE	51.5	43.30	63.90	57.93	46.20	41.91	TRAY	BLACK	0.03um [.000001in]	②	2-390378-7	68
OBSOLETE	40.07	31.87	52.47	46.50	34.77	30.48	TRAY	BLACK	0.03um [.000001in]	②	2-390378-5	50
	51.5	43.30	63.90	57.93	46.20	41.91	TRAY	BLACK	0.38um [.000015in]	②	1-390378-7	68
	40.07	31.87	52.47	46.50	34.77	30.48	TRAY	BLACK	0.38um [.000015in]	②	1-390378-5	50
	51.5	43.30	63.90	57.93	46.20	41.91	TRAY	BLACK	0.76um [.000030in]	②	390378-7	68
	40.07	31.87	52.47	46.50	34.77	30.48	TRAY	BLACK	0.76um [.000030in]	②	390378-5	50
	DIM F	DIM E	DIM D	DIM C	DIM B	DIM A	PACKAGING	COLOR	CONTACT FINISH		AMP PART NO.	# OF POS.

THIS DRAWING IS A CONTROLLED DOCUMENT.

DIM J. BURWELL 20JUL2000	AMP Incorporated Harrisburg Pa 17105-3608
CHK C. CASH 12JUL2000	RECEPTACLE ASSEMBLY, .025 CENTERLINE, AMPLIMITE .050 SERIES
APVD C. CASH 12JUL2000	SIZE: A1 CAGE CODE: 00779 DRAWING NO: 390378
PRODUCT SPEC: ④	RESTRICTED TO: -
APPLICATION SPEC: ⑤	CUSTOMER DRAWING
WEIGHT: -	SCALE: 1:1
	SHEET: 1 OF 1
	REV: D

AMP 4805 REV 23FE995