

PART NUMBER CODING

MATERIAL (INSULATOR / CONTACT)

(SEE MATERIAL TABLE)

PLATING

ALL PLATINGS HAVE .000050" MIN NICKEL UNDERPLATE

- CONTACT SURFACE TERMINATION
- B = .000010" GOLD .000100" PURE TIN, MATTE
- C = .000030" GOLD .000100" PURE TIN, MATTE
- G = .000010" GOLD .000005" GOLD
- E = .000100" PURE TIN, MATTE
- S = .000010" GOLD OVERALL
- M = .000030" GOLD .000010" GOLD OVERALL

MODIFICATION

- OMIT = STANDARD, EXAMPLE: 'RMC22DAAN'
- M500 = BROWN PPS (MATERIAL CODE 'R' ONLY)
- M594 = WHITE PA9T (MATERIAL CODES 'G' ONLY)

TERMINATION TYPE

NUMBER OF POSITIONS PER ROW

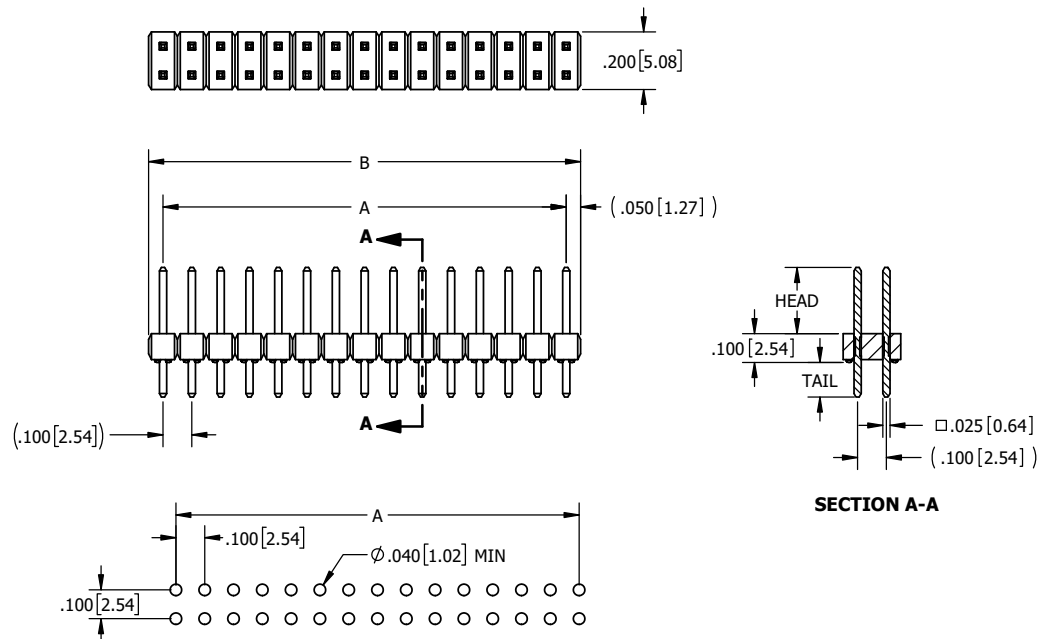
(01 THRU 36)

MATERIAL TABLE

LETTER CODE	INSULATOR / CONTACT	OPERATING TEMP.	PROCESSING TEMP.	MODIFICATION NUMBER
P	**BLACK PBT / PHOSPHOR BRONZE	-65°C TO +125°C	WAVE/MANUAL SOLDERING	OMIT
G	BLACK PA9T / PHOSPHOR BRONZE	-65°C TO +150°C	260°C MAX FOR 10 SECS	OMIT
G	WHITE PA9T / PHOSPHOR BRONZE	-65°C TO +150°C	260°C MAX FOR 10 SECS	M594
*R	GREEN PPS / PHOSPHOR BRONZE**	-65°C TO +200°C	260°C MAX FOR 20 SECS	OMIT
*R	BROWN PPS / PHOSPHOR BRONZE**	-65°C TO +200°C	260°C MAX FOR 20 SECS	M500
*Q	TAN PEEK / PHOSPHOR BRONZE**	-65°C TO +250°C	260°C MAX FOR 20 SECS	OMIT
*O	BROWN PPS / HIGH CONDUCTIVITY	-65°C TO +200°C	260°C MAX FOR 20 SECS	M500

* AVAILABLE WITH OVERALL GOLD PLATING ('M') ONLY

** OR EQUIVALENT



PCB LAYOUT RECOMMENDED

NOTES:

1. INSULATOR MATERIAL: SEE PART NUMBER CODING
2. CONTACT MATERIAL: SEE PART NUMBER CODING
3. PLATING: SEE PART NUMBER CODING
4. UL FLAMMABILITY RATING: 94V-0
5. VOLTAGE RATING: 700 VAC
6. CURRENT RATING: 3 AMP
7. CONTACT RESISTANCE: 30 MILLIOHMS MAX.
8. INSULATION RESISTANCE: 5000 MEGA OHMS MIN.



RoHS COMPLIANT

REVISIONS

REV.	ECO NO.	DESCRIPTION	DATE	BY
L	4650	ADDED 'O' HIGH CONDUCTIVITY MATERIAL	4/12/2023	TT/JH
M	4664	INCREASE STANDOFFS FROM 1 TO 4	4/27/2023	JH

TERMINATION TYPE

STRAIGHT

CODE	HEAD DIMENSION ±.008 [0.20]	TAIL DIMENSION ±.010 [0.25]	A		B	
			INCH	MM	INCH	MM
			±.008	±0.20	±0.20	±0.51
AA	.230[5.84]	.120[3.05]				
AB	.230[5.84]	.230[5.84]				
AC	.230[5.84]	.320[8.13]				
AD	.230[5.84]	.420[10.67]				
AE	.230[5.84]	.520[13.21]				
AF	.230[5.84]	.620[15.75]				
AG	.230[5.84]	.720[18.29]				
AH	.230[5.84]	.820[20.83]				
AI	.230[5.84]	.900[22.86]				
AJ	.230[5.84]	1.000[25.40]				
AK	.230[5.84]	.035[0.89]				
FA	.318[8.08]	.120[3.05]				
FB	.318[8.08]	.220[5.59]				
FC	.318[8.08]	.320[8.13]				
FD	.318[8.08]	.420[10.67]				
FE	.318[8.08]	.520[13.21]				
FF	.318[8.08]	.620[15.75]				
FG	.318[8.08]	.710[18.03]				
FH	.318[8.08]	.810[20.57]				
FI	.318[8.08]	.910[23.11]				
FJ	.318[8.08]	.050[1.27]				
ZA	.120[3.05]	.120[3.05]				
ZB	.120[3.05]	.095[2.41]				
ZC	.120[3.05]	.260[6.60]				
ZD	.120[3.05]	.610[15.49]				
ZI	.520[13.21]	.110[2.79]				
ZJ	.720[18.29]	.110[2.79]				
ZO	.820[20.83]	.110[2.79]				
ZQ	1.020[25.91]	.110[2.79]				
ZR	1.220[30.99]	.110[2.79]				

CUSTOMER COPY

UNLESS OTHERWISE SPECIFIED: DIMENSIONS ARE IN INCHES (MM)	DRAWN	DATE	NAME	
		9/8/2011	JH	
TOLERANCES:	<small>THE INFORMATION HEREIN CONTAINS PROPRIETARY INFORMATION OF SULLINS ELECTRONICS AND IS NOT TO BE REPRODUCED, USED OR DISCLOSED TO OTHERS FOR ANY PURPOSE EXCEPT AS SPECIFICALLY AUTHORIZED IN WRITING BY AN OFFICER OF SULLINS ELECTRONICS.</small>			
ANGULAR: ± 1°	TITLE .100" MALE HEADER, STRAIGHT			
DECIMALS XX= ± .02 [5] XXX= ± .005 [13] XXXX= ± .0005 [013]	PART NUMBER C _ D _ N-(M500,M594)			
	SIZE	CAGE CODE	DWG. NO.	REV
	C	54453	C10419	M
	SCALE: 3:1	SHEET 1 OF 1		