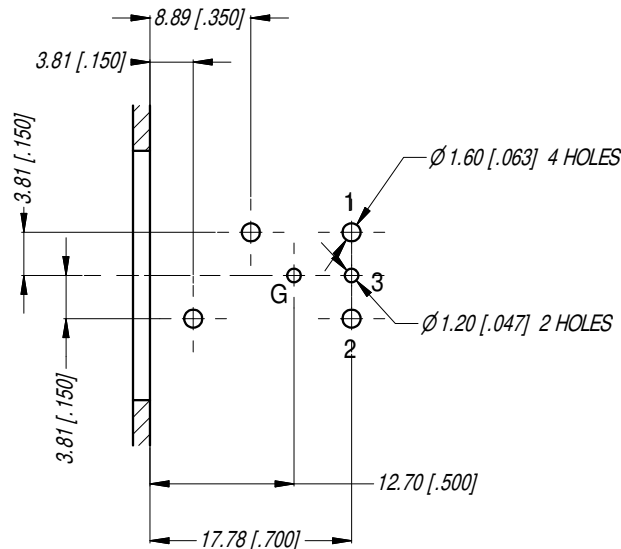


MIN MOUNTING PITCH (1:1)

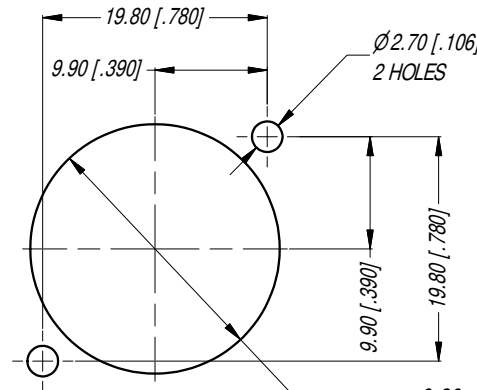


PCB LAYOUT

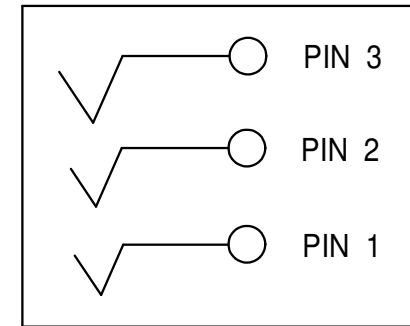
TOLERANCE: ± 0.05 [± 0.002]

NOTE: DIMENSIONS IN PARENTHESES ARE IN INCHES.

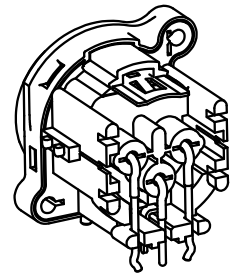
NOTE: SUFFIX "B" IN THE PART No. INDICATES BULK PACK



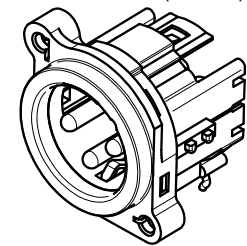
PANEL CUT OUT
REAR VIEW



SCHEMATIC CHART



3D VIEW (1:1)



REV	DESCRIPTION	DATE	BY	CHG No
2	ADD SUFFIX B TO PART No.	27/08/15	T.N	9318
1	ADD SCHEMATIC CHART	06/26/09	A.O	8793
0	FIRST ISSUE	29/11/07	T.N	----

REVISION HISTORY

UNLESS OTHERWISE SPECIFIED TOLERANCE TO BE:		THIS DOCUMENT IS THE PROPERTY OF AMPHENOL AUSTRALIA PTY. LTD. NO PART THEREOF MAY BE REPRODUCED AND USED WITHOUT THE PRIOR WRITTEN CONSENT OF THE OWNER			
LINEAR	ANGULAR	CAD FILE	DRN:	DATE:	TITLE:
X ± 0.5 X.X ± 0.1 X.XX ± 0.05	X° ± 1 X.X° ± 30° X.XX° ± 15°	55010515000211	T.N	29/11/07	XLR MALE B TYPE CONNECTOR CUSTOMER DWG
BREAK ALL SHARP EDGES AND REMOVE ALL BURRS		MATL:	CKD:	DATE:	Amphenol Australia Pty.Ltd. 2 Fiveways Blvd. Keysborough, Vic3173
DO NOT SCALE		FINISH:	APP'D:	DATE:	DRAWING NO.
DIMENSIONS IN MILLIMETRES		REFER TO COMPONENTS	P.M	06/26/09	55010515-000-2
		THIRD ANGLE PROJECTION		SCALE: 1.5:1	SHEET
				PART No: AC3MBHL-AU-B	2/2
				SIZE: A4	

Amphenol

Amphenol Australia Pty.Ltd. 2 Fiveways Blvd. Keysborough, Vic3173

DRAWING NO. 55010515-000-2 SHEET 2/2