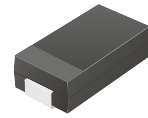


## CDBA220L-G Thru. CDBA240LL-G

**Forward Current: 2.0A**  
**Reverse Voltage: 20~40V**  
**RoHS Device**

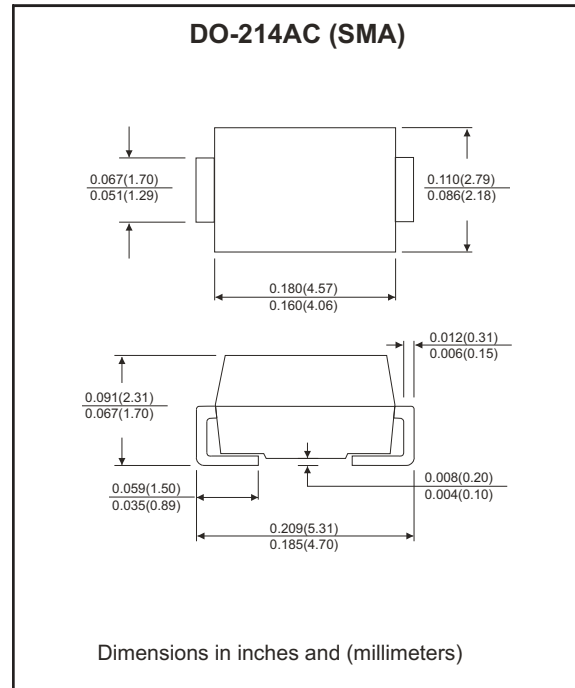


### Features

- Ideally for surface mount applications.
- Easy pick and place.
- Plastic package has Underwriters Lab. flammability classification 94V-0.
- Built-in strain relief.
- Super low forward voltage drop.

### Mechanical Data

- Case: JEDEC DO-214AC molded plastic.
- Terminals: solderable per MIL-STD-750, method 2026.
- Polarity: Color band denotes cathode end.
- Approx. Weight: 0.063 grams.



### Maximum Ratings and Electrical Characteristics

(at  $T_A=25\text{ }^\circ\text{C}$  unless otherwise noted)

Parameter	Symbol	CDBA220L-G	CDBA220LL-G	CDBA240L-G	CDBA240LL-G	Unit
Max. repetitive peak reverse voltage	$V_{RRM}$	20	20	40	40	V
Max. DC blocking voltage	$V_{DC}$	20	20	40	40	V
Max. RMS voltage	$V_{RMS}$	14	14	28	28	V
Peak surge forward current, 8.3ms single half sine-wave superimposed on rated load (JEDEC method)	$I_{FSM}$	50				A
Max. average forward current	$I_o$	2.0				A
Max. instantaneous forward current at 2.0A	$V_F$	0.38	0.34	0.40	0.36	V
Max. DC reverse current at $T_A=25\text{ }^\circ\text{C}$ rated DC blocking voltage $T_A=80\text{ }^\circ\text{C}$	$I_R$	1.0 40				mA
Max. thermal resistance (Note 1)	$R_{\theta JA}$ $R_{\theta JA}$	75 17				$^\circ\text{C/W}$
Max. operating junction temperature	$T_J$	125				$^\circ\text{C}$
Storage temperature range	$T_{STG}$	-50 ~ +150				$^\circ\text{C}$

Note1: Thermal resistance from junction to ambient and junction to lead P.C.B. mounted on 0.2x0.2 inch copper pad areas.

Company reserves the right to improve product design, functions and reliability without notice.

REV:A

## ELECTRICAL CHARACTERISTIC CURVES (CDBA220L-G Thru. CDBA240LL-G)

Fig.1 - Reverse Characteristics

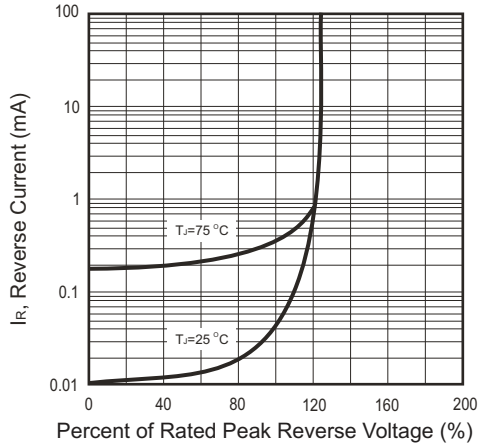


Fig.2 - Forward Characteristics

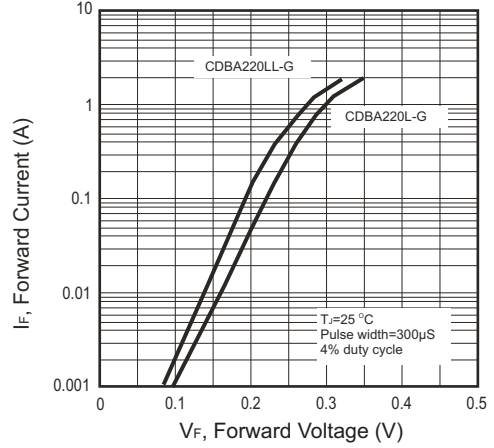


Fig.3 - Junction Capacitance

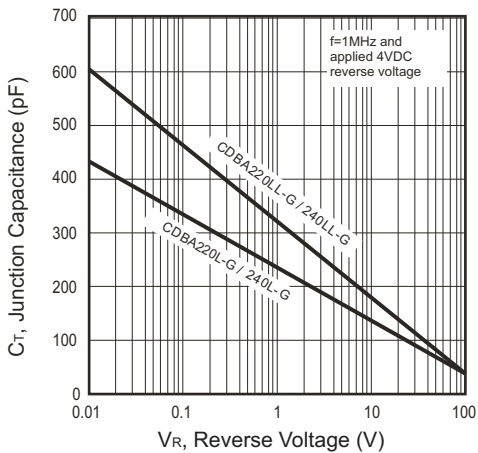


Fig.4 - Forward Characteristics

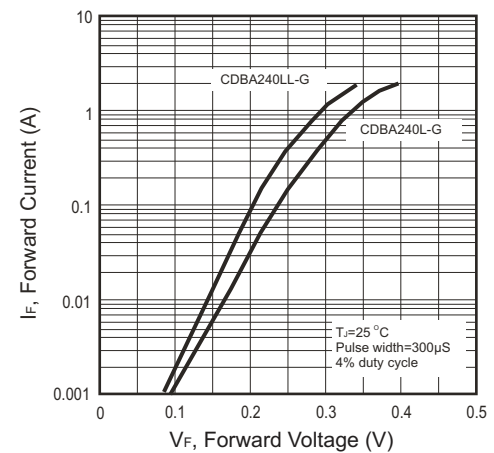


Fig.5 - Non-Repetitive Forward Surge Current

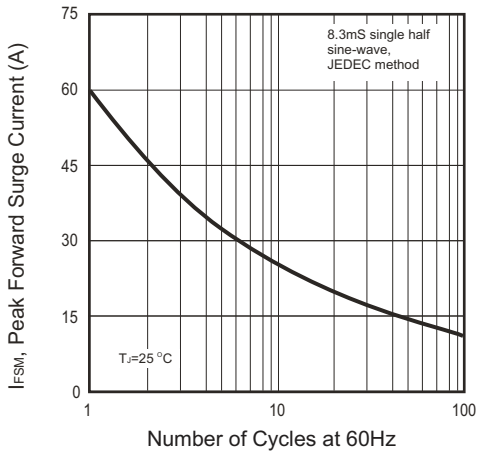
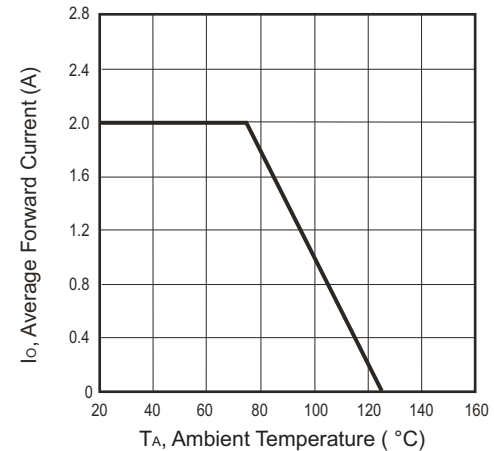


Fig.6 - Current Derating Curve



Company reserves the right to improve product design , functions and reliability without notice.

REV:A