

THIS DRAWING IS UNPUBLISHED.
VERTRAULICHE UNVERÖFFENTLICHTE ZEICHNUNG

RELEASED FOR PUBLICATION
FREI FUER VERÖFFENTLICHUNG
1997

MATED WITH:
PASSEND ZU:

LOC: AI
DIST: -

REVISIONS
ÄNDERUNGEN

© COPYRIGHT 1997

BY AMP INCORPORATED.

ALL RIGHTS RESERVED.
ALLE RECHTE VORBEHALTEN

P: -
LTR: -

DESCRIPTION
BESCHREIBUNG

DATE

DWN

APVD

PROJEKT NR.: -

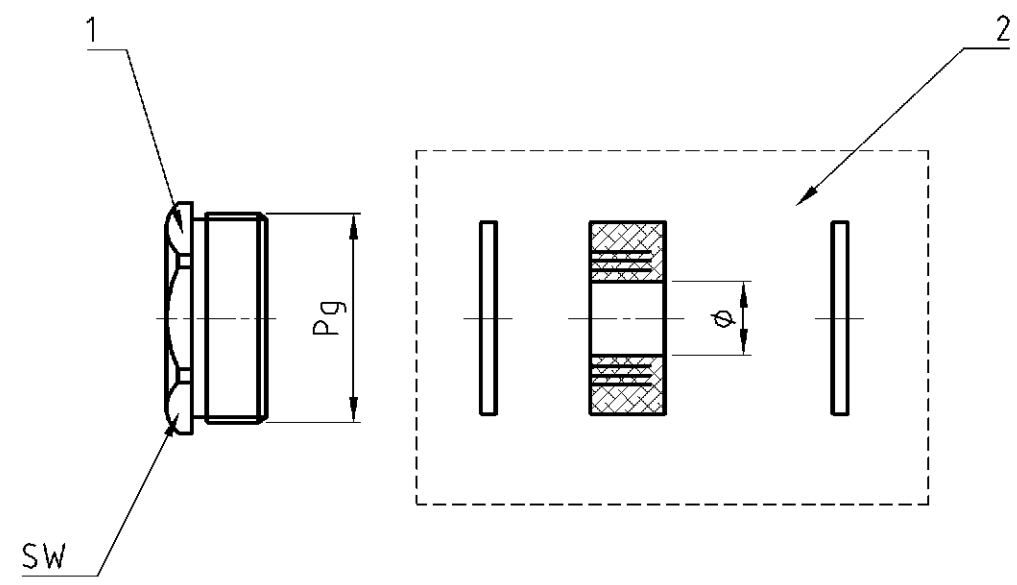
A1

neu gezeichnet Eg00-1711-02

27.05.02

SR

SM



| 7 | 6 | 5 | 4 | 3 | 2 | 1 | 9 | 9 | 9 | DESCRIPTION / BENENNUNG | MATERIAL | SURFACE / OBERFLÄCHE | Pg | SW | min. | max. | ITEM NO. POS. | NOTE / BEMERKUNG |
|---|---|---|---|---|---|---|---|---|---|------------------------------------|------------------|-------------------------|----|----|------|------|------------------|---------------------|
| 1 | - | - | - | - | - | - | - | - | - | Ausschneidbarer Dichtring ASD.42.N | Neoprene / Stahl | schwarz / blau | - | - | 30 | 39 | 2 | Set |
| - | 1 | - | - | - | - | - | - | - | - | Ausschneidbarer Dichtring ASD.36.N | Neoprene / Stahl | schwarz / blau | - | - | 24 | 33 | 2 | Set |
| - | - | 1 | - | - | - | - | - | - | - | Ausschneidbarer Dichtring ASD.29.N | Neoprene / Stahl | schwarz / blau | - | - | 18 | 27 | 2 | Set |
| - | - | - | 1 | - | - | - | - | - | - | Ausschneidbarer Dichtring ASD.21.N | Neoprene / Stahl | schwarz / blau | - | - | 10 | 19 | 2 | Set |
| - | - | - | - | 1 | - | - | - | - | - | Ausschneidbarer Dichtring ASD.16.N | Neoprene / Stahl | schwarz / blau | - | - | 7.5 | 15 | 2 | Set |
| - | - | - | - | - | 1 | - | - | - | - | Ausschneidbarer Dichtring ASD.13.N | Neoprene / Stahl | schwarz / blau | - | - | 7.5 | 12.5 | 2 | Set |
| - | - | - | - | - | - | 1 | - | - | - | Ausschneidbarer Dichtring ASD.11.N | Neoprene / Stahl | schwarz / blau | - | - | 7.5 | 12.5 | 2 | Set |
| - | - | - | - | - | - | - | 1 | - | - | Ausschneidbarer Dichtring ASD 9.N | Neoprene / Stahl | schwarz / blau | - | - | 5 | 10 | 2b | Set |
| 1 | - | - | - | - | - | - | - | - | - | Druckschraube Pg 42 | MS | vernickelt | 42 | 54 | - | - | 1 | - |
| - | 1 | - | - | - | - | - | - | - | - | Druckschraube Pg 36 | MS | vernickelt | 36 | 47 | - | - | 1 | - |
| - | - | 1 | - | - | - | - | - | - | - | Druckschraube Pg 29 | MS | vernickelt | 29 | 37 | - | - | 1 | - |
| - | - | - | 1 | - | - | - | - | - | - | Druckschraube Pg 21 | MS | vernickelt | 21 | 28 | - | - | 1 | - |
| - | - | - | - | 1 | - | - | - | - | - | Druckschraube Pg 16 | MS | vernickelt | 16 | 22 | - | - | 1 | - |
| - | - | - | - | - | 1 | - | - | - | - | Druckschraube Pg 13 | MS | vernickelt | 13 | 20 | - | - | 1 | - |
| - | - | - | - | - | - | 1 | - | - | - | Druckschraube Pg 11 | MS | vernickelt | 11 | 18 | - | - | 1 | - |
| - | - | - | - | - | - | - | 1 | - | - | Druckschraube Pg 9 | MS | vernickelt | 09 | 15 | - | - | 1 | - |

| | | | | | | | |
|--|----------|-------------------------------------|----------|--|----------|------------------------|---------|
| DS.42.DI | DS.36.DI | DS.29.DI | DS.21.DI | DS.16.DI | DS.13.DI | DS.11.DI | DS.9.DI |
| <p>THIS DRAWING IS A CONTROLLED DOCUMENT FOR AMP INCORPORATED. IT IS SUBJECT TO CHANGE AND THE CONTROLLING ENGINEERING ORGANIZATION SHOULD BE CONTACTED FOR THE LATEST REVISION. DIESES ZEICHNUNGSDOKUMENT WIRD DURCH AMP INCORPORATED KONTROLLIERT. ÄNDERUNGEN, DIE DEM TECHNISCHEN FORTSCHRITT DIENEN, SIND VORBEHALTEN. DEN JEWEL'S LETZTQUELTIGEN ÄNDERUNGSSTAND ERFAHREN SIE AUF ANFRAGE.</p> | | | | | | | |
| DIMENSIONS: DIMENSIONEN: mm | | | | TOLERANCES UNLESS OTHERWISE SPECIFIED: ALLGEMEINTOLERANZEN | | | |
| | | | | <p>n. ISO 8015 n. ISO 2768 - mH - E n. DIN 16901 - 140</p> | | | |
| MATERIAL | | | | FINISH / OBERFLÄCHE / FARBE | | | |
| 1 | | | | 2 | | | |
| DWN Schneider 27.05.02 | | CHK Schweiger 27.05.02 | | APVD - | | NAME | |
| PRODUCT SPEC PRODUKTSPEZ. | | APPLICATION SPEC VERARBEITUNGSSPEZ. | | WEIGHT GEWICHT - | | RESTRICTED TO NUR FUER | |
| SIZE A3 | | CAGE CODE 00779 | | DRAWING NO ZEICHNUNGS-NR. C-1106004 | | REVISIONS | |
| CUSTOMER DRAWING / KUNDENZEICHNUNG | | MASSSTAB 1:1 | | BLATT 1 OF 1 | | REV A1 | |

AMP HTS Elektrotechnik
53819 Neunkirchen, Germany

DS cable fitting
DS Kabelverschraubung Set