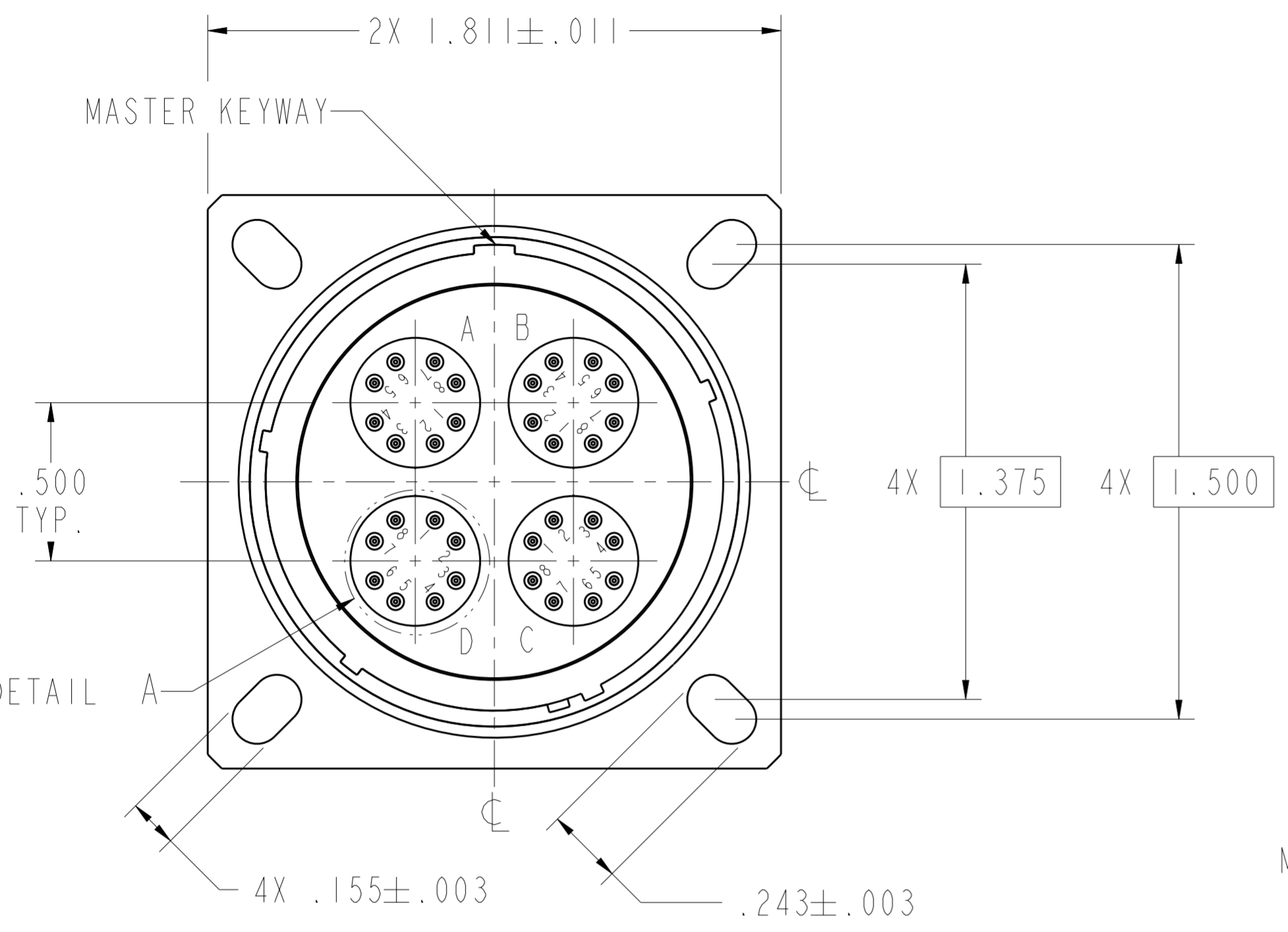
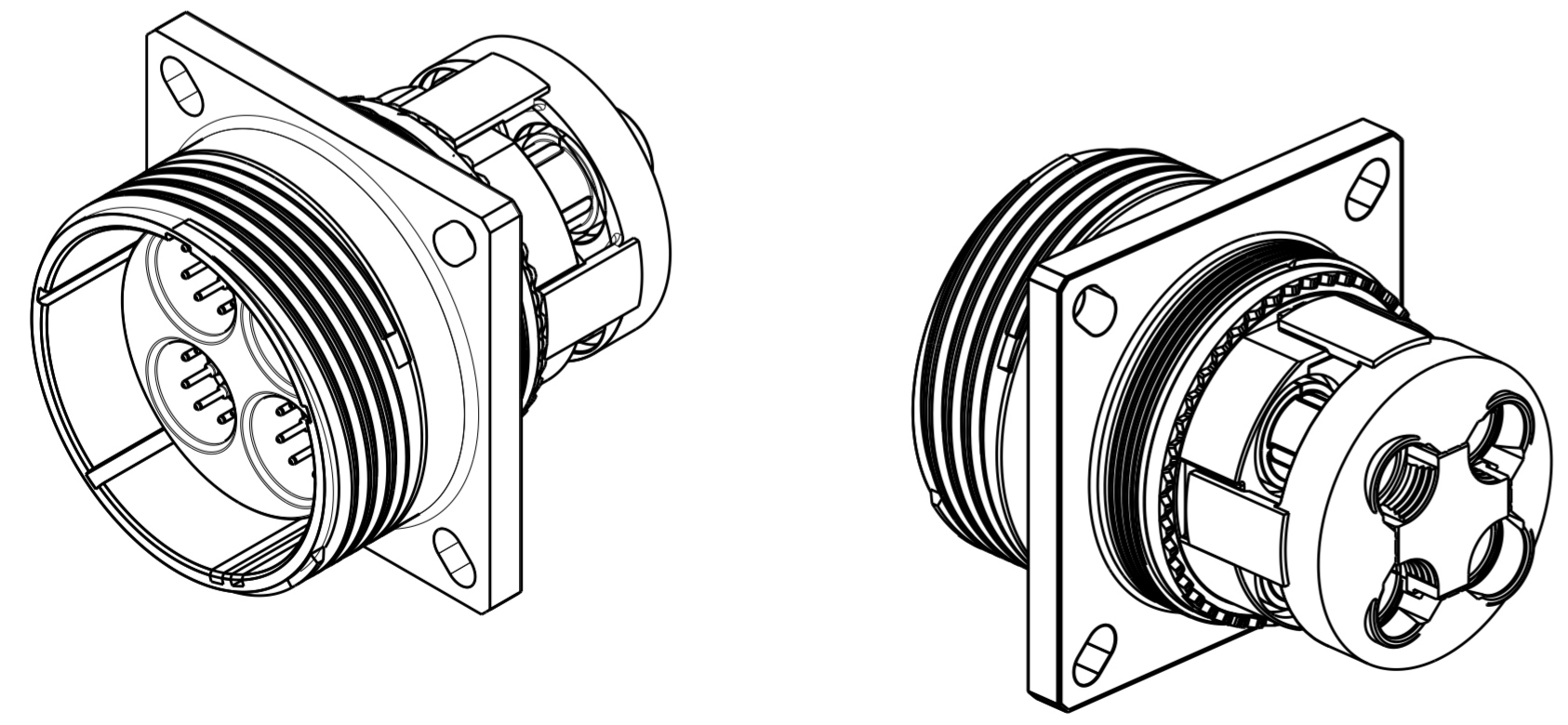


THIS DRAWING IS UNPUBLISHED. RELEASED FOR PUBLICATION 20
 © COPYRIGHT 20 ALL RIGHTS RESERVED.

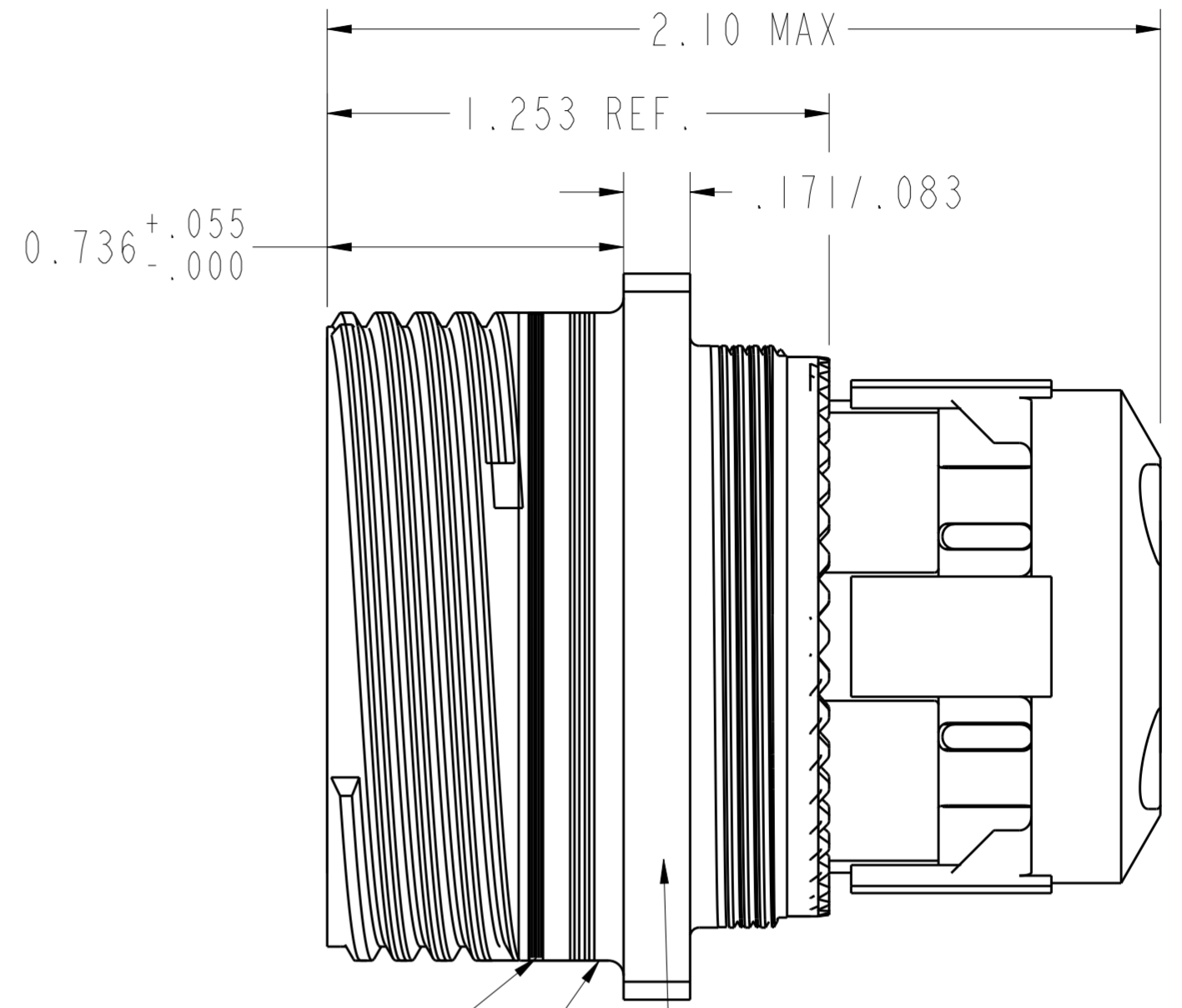
LOC		DIST		REVISIONS			
P	LTR	DESCRIPTION	DATE	DWN	APVD		
A		NEW RELEASE PER ECO-16-000996	160122	MA	JPF		



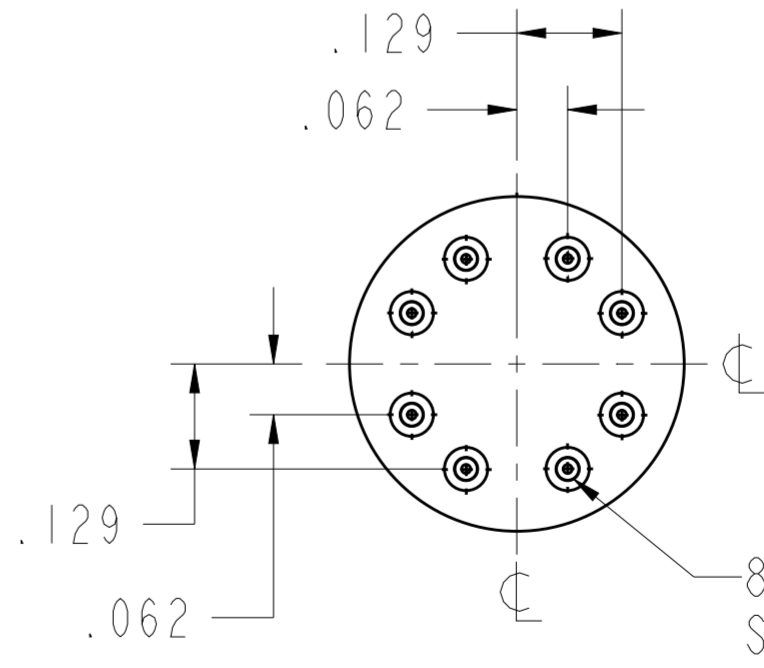
PIN INSERT MARKING SHOWN ABOVE



SEE SHEET 2 FOR APPLICABLE NOTES



RED FULLY MATED INDICATOR BAND REF
 BLUE BAND REF

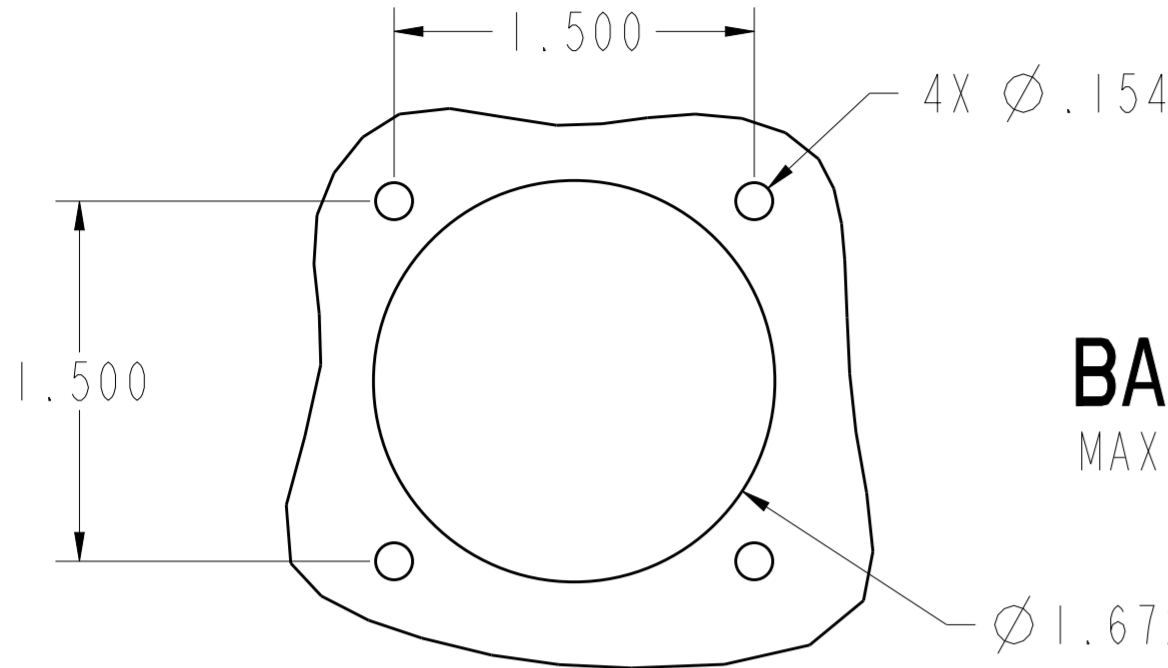


DETAIL A
 SCALE 4.250
 TYPICAL, 4 PLCS

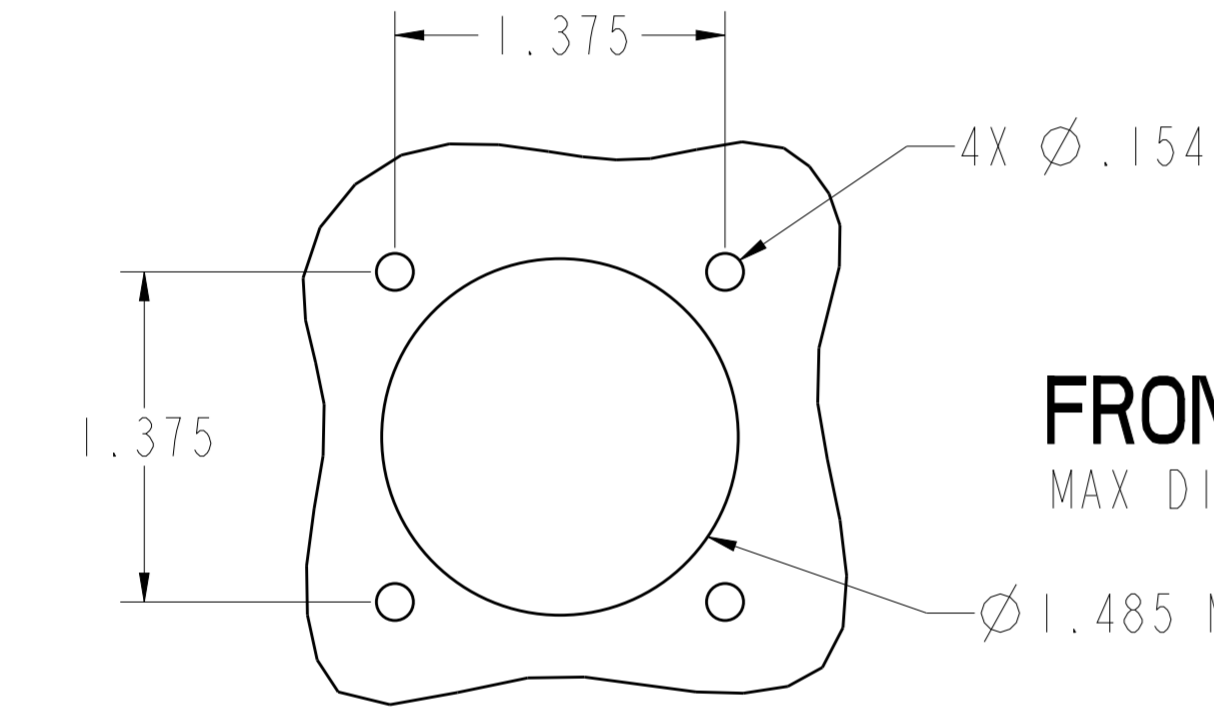
THIS DRAWING IS A CONTROLLED DOCUMENT.		DWN MALI 4NOV2013	STE TE Connectivity	
DIMENSIONS: inch		CHK JPF 160122		
TOLERANCES UNLESS OTHERWISE SPECIFIED:		APVD ARR 160122	NAME CONNECTOR, RECEPTACLE FLANGE MOUNT 2532 ARRANGEMENT, -1A MOD	
0 PLC ±1		PRODUCT SPEC	SIZE A2	
1 PLC ±0.1		APPLICATION SPEC	CAGE CODE 111139	DRAWING NO C-CFX20x2532xxx-1A
2 PLC ±0.01		WEIGHT	RESTRICTED TO	
3 PLC ±0.005		CUSTOMER DRAWING	SCALE 2.500	SHEET 1 OF 2
4 PLC ±0.0005				REV A
ANGLES ±0.5				
FINISH				

THIS DRAWING IS UNPUBLISHED. RELEASED FOR PUBLICATION 20
 © COPYRIGHT 20 ALL RIGHTS RESERVED.

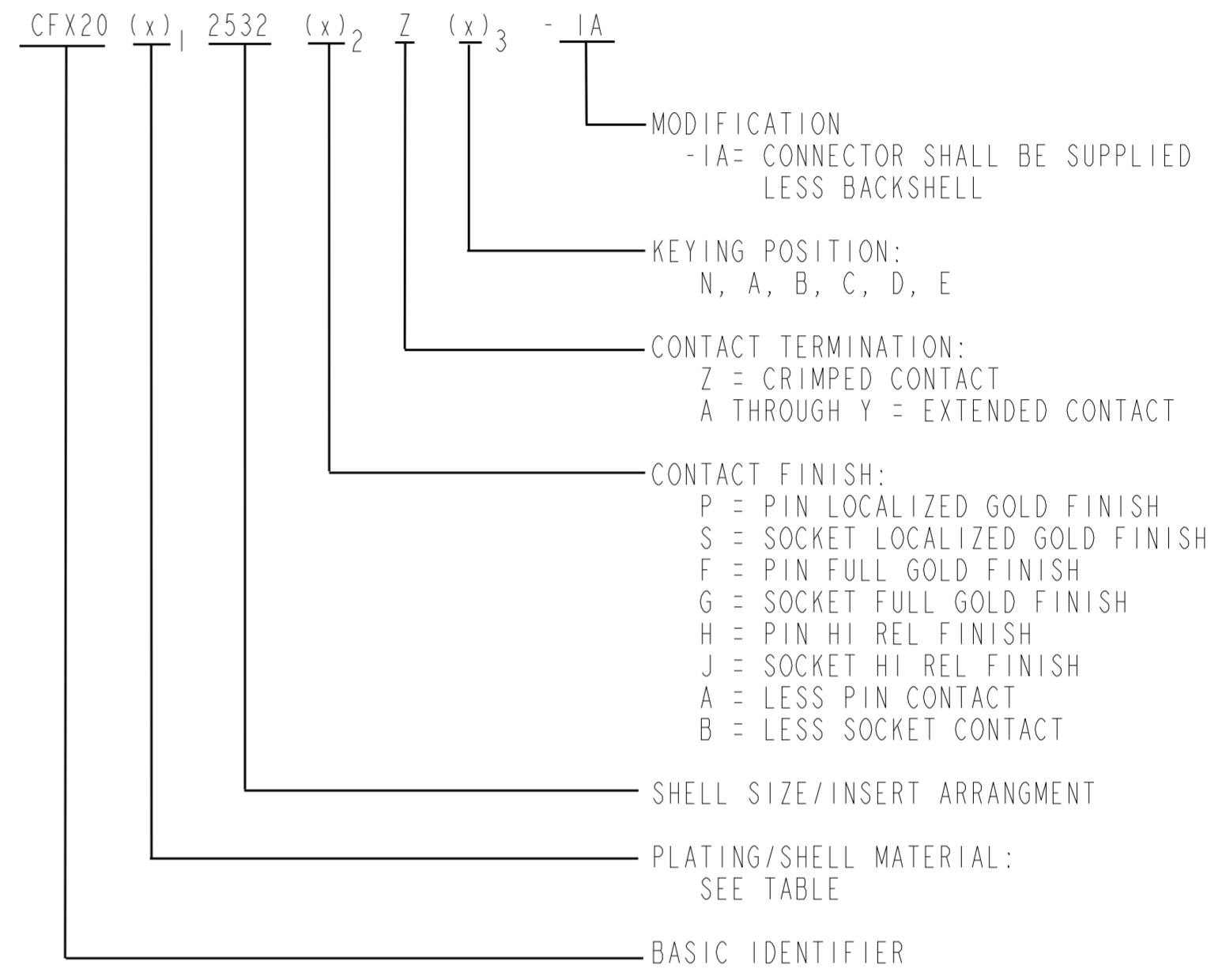
LOC		DIST		REVISIONS			
P	LTR	DESCRIPTION	DATE	DWN	APVD		
-	-	SEE SHEET 1	-	-	-		



BACK PANEL MOUNTING
 MAX DISTANCE BETWEEN MOUNTING SCREWS



FRONT PANEL MOUNTING
 MAX DISTANCE BETWEEN MOUNTING SCREWS



7. COMPOSITE WEIGHT WITHOUT MODULES AND CABLE: 0.196 POUNDS.
 METAL WEIGHT WITHOUT MODULES AND CABLE: 0.227 POUNDS.
 PIN MODULE, FOLLOWER AND BRAID SUPPORTS WEIGHT: .011 LBS.
 SOCKET MODULE, FOLLOWER AND BRAID SUPPORTS WEIGHT: .017 LBS.

6. MATES WITH CFX26x2532xxx.

5. SEE TABLE FOR TEMPERATURE RATINGS.

4. FINISH: SHELL - SEE TABLE.
 CONTACTS - SEE PART NUMBER BREAKDOWN.

3. MATERIAL: SHELL - SEE TABLE.
 CONTACTS - COPPER ALLOY.
 RESILIENT INSERTS - SILICONE ELASTOMER.
 PLASTIC INSERTS - THERMOPLASTIC.

2. FOR AVAILABILITY CONSULT FACTORY.

1. ALL DIMENSIONS ARE IN INCHES UNLESS OTHERWISE SPECIFIED.

PART NUMBER (x) ₁	PLATING	SHELL MATERIAL	TEMPERATURE RATING
M	NICKEL	COMPOSITE	-65°C TO 200°C
J	O.D. CAD	COMPOSITE	-65°C TO 175°C
F	NICKEL	ALUMINUM	-65°C TO 200°C
W	O.D. CAD	ALUMINUM	-65°C TO 175°C
S	NICKEL	STAINLESS STEEL	-65°C TO 200°C
T	TEFLON NICKEL	ALUMINUM	-65°C TO 175°C
Z	BLACK ZINC NICKEL	ALUMINUM	-65°C TO 175°C

SIZE 25 PART NUMBER(x) ₃	POS
CFX20x2532xZN	N
CFX20x2532xZA	A
CFX20x2532xZB	B
CFX20x2532xZC	C
CFX20x2532xZD	D
CFX20x2532xZE	E

THIS DRAWING IS A CONTROLLED DOCUMENT. DWN MALI 4NOV2013
 CHK JPF 160122
 APVD 160122

STE TE Connectivity

NAME: CONNECTOR, RECEPTACLE
 FLANGE MOUNT
 2532 ARRANGEMENT, -1A MOD

SIZE: A2 CAGE CODE: 111139 DRAWING NO: C-CFX20x2532xxx-1A RESTRICTED TO: -

Customer Drawing SCALE: 2.000 SHEET 2 OF 2 REV A