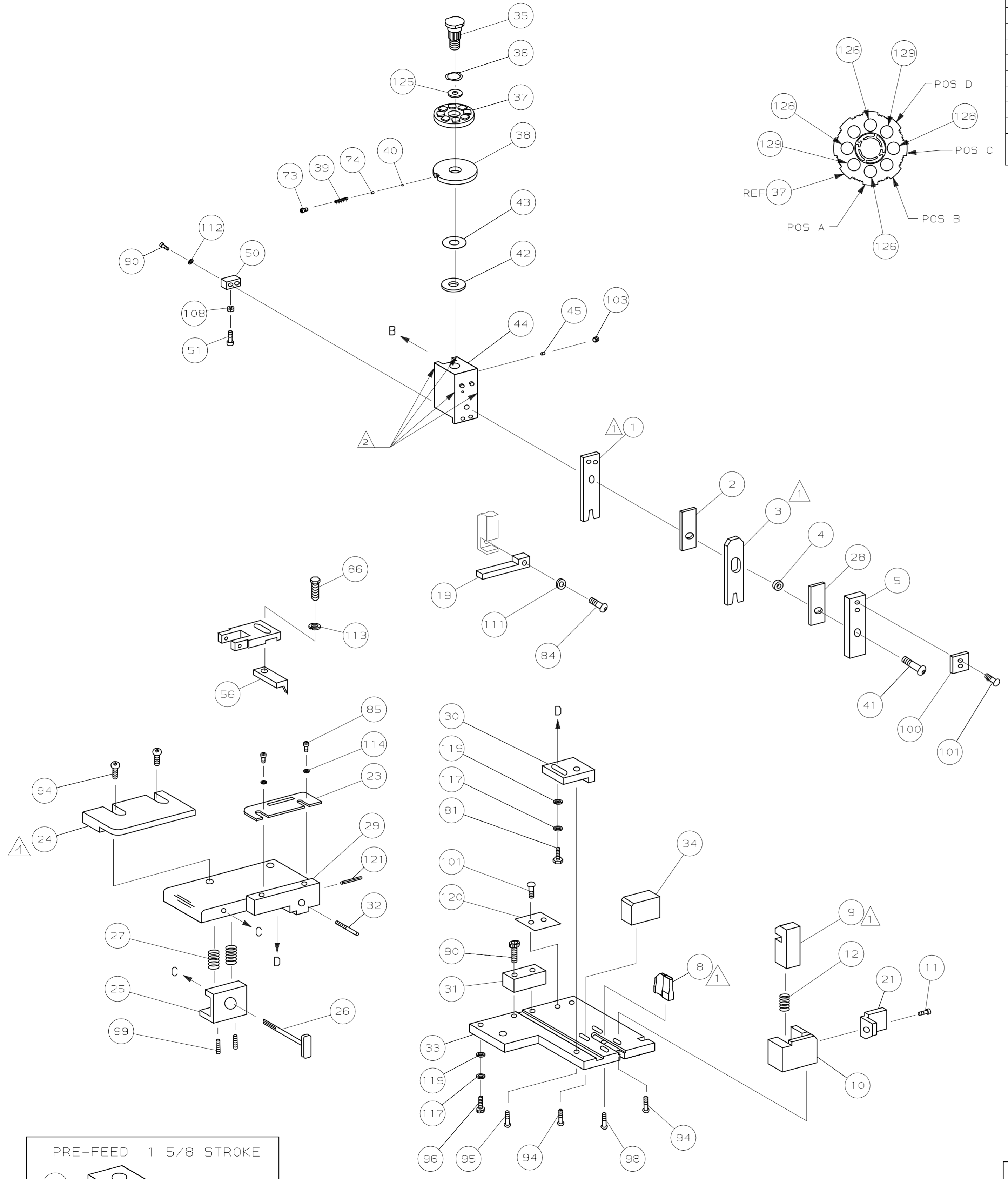


PART NUMBER	REV	FIRST USED
567986-1	B	854040-3

THIS DRAWING IS A CONTROLLED DOCUMENT.



TERMINAL NAME: (AMP TERMINAL)						
SOCKET	PIN	VISIBLE PAD LTR	CRIMP DATA (NON-AMP TERM-CUST SPEC)			
			CRIMP HEIGHT	WIRE SIZE		
794406	794407		A	.051 ±.002 [1.30 ±0.05mm]	16 or (2)20	
			B	.048 ±.002 [1.22 ±0.05mm]	18	
			C	.042 ±.002 [1.07 ±0.05mm]	20	
			D	NOT	USED	
			CRIMP	SIZE	TYPE	RANGE
			WIRE	.070 [1.78mm]	F	20-16
			INSUL	.130 [3.30mm]	0	.079-.126
WIRE STRIP LENGTH	TERM APPL SPEC	FEED	APPL INSTRUCTION	SET UP GAGE	LAYOUT	
.125-.146	114-16017	.433	SEE CUSTOMER MANUAL	NONE	567986	

QTY	REV	TER	APPL SPEC	DESCRIPTION	ITEM NO
2	-	C	2-354779-6	PIN, WIRE DISC (.3120)D	129
2	-	C	2-354779-0	PIN, WIRE DISC (.3090)C	128
					127
2	-	C	3-354779-8	PIN, WIRE DISC (.3180)A	126
1	-	A	986950-1	WASHER, FLAT PRECISION	125
1	-	A	217238-3	GENERAL INSTRUCTION PACKAGE	124
					123
					122
1	-	A	4-21028-0	PIN, SLT SPR (Ø.093x.75) ST GDE PL	121
1	-	B	690701-2	PLATE, SERIAL NO.	120
2	-	A	21899-2	WASHER, FLAT (#10) S G ADJ BLK	119
					118
2	-	A	21024-5	WASHER, LOCK (#10) ADJ BLOCK	117
					116
					115
2	-	A	21024-2	WASHER, LOCK (#4) FRONT STP GUIDE	114
REF	-	A	21024-4	WASHER, LOCK (#8) FEED FINGER	113
2	-	A	21024-4	WASHER, LOCK (#8) DEP-HOLD	112
REF	-	A	21024-4	WASHER, LOCK (#8) STRIPPER	111
					110
					109
1	-	A	21018-5	NUT, HEX (#6) HOLD DOWN	108
					107
					106
					105
1	-	A	21009-2	SCR, SKT SET (1/4-20x.25 LW) RAM	104
					103
					102
4	-	A	21017-2	SCR, DRIVE (#2x.19) ID PLATE	101
1	-	B	819347-1	PLATE, IDENTIFICATION	100
2	-	A	5-21006-6	SCR, SET (10-32x.75) DRAG	99
1	-	A	22733-8	SCR, BHC (8-32x.38 LW) ANVIL	98
					97
1	-	A	3-21000-8	SCR, SHC (10-32x.88) MOUNTING	96
1	-	A	2-21002-7	SCR, BHC (10-32x.50) SG ADJ BLK	95
6	-	A	2-21002-2	SCR, BHC (8-32x.50) SHEAR-TERM SUP	94
					93
					92
1	-	A	1-21002-7	SCR, SHC (6-32x.50) CAM	91
4	-	A	2-21000-7	SCR, SHC (8-32x.50) SCR BLK	90
					89
					88
					87
REF	-	A	2-22603-0	SCR, HEX HD (8-32x.31) FEED FINGER	86
2	-	A	1-21000-3	SCR, SHC (4-40x.25) F ST GUIDE	85
REF	-	A	22733-9	SCR, BHC (8-32x.50 SL) STRIPPER	84
					83
					82
1	-	A	3-22603-1	SCR, HEX (10-32x.38) SG ADJ BL	81
					80
					79
					78
2	-	B	463310-4	BLADE, STRIPPING (#18)	77
					76
					75
1	-	A	690603-1	SPRING, ASSIST	74
1	-	A	23030-1	SCR, SKT CAP (6-32x.25) CP DSC	73
					72
					71

QTY	REV	TER	APPL SPEC	DESCRIPTION	ITEM NO
-1	U/M	DWG SIZE	PART NO	DESCRIPTION	ITEM NO

PARTS LIST					
QTY	REV	TER	APPL SPEC	DESCRIPTION	ITEM NO
-1	U/M	DWG SIZE	PART NO	DESCRIPTION	ITEM NO

SIM TO HDM 680582

QTY	REV	TER	APPL SPEC	DESCRIPTION	ITEM NO
					70
					69
					68
					67
					66
					65
					64
					63
					62
					61
					60
					59
					58
					57
					56
REF	-	B	694433-8	PAWL, FEED	55
					54
					53
					52
1	-	A	811242-2	BUMPER, HOLDDOWN	51
1	-	A	690753-1	SPACER, TONKER	50
					49
1	-	A	690602-6	CAM, PRE-FEED 1.62 STROKE	48
					47
					46
1	-	A	690191-1	PLUG, NYLON	45
1	-	C	455673-1	RAM	44
1	-	A	690125-1	WASHER, LAMINATED	43
1	-	A	690124-1	WASHER, RAM	42
1	-	A	7-21002-9	BOLT, CRIMPER (5/16x1.00)	41
1	-	A	23241-6	BALL, STEEL	40
1	-	A	690170-1	SPRING, COMPRESSION	39
1	-	C	690142-1	DISC, INSULATION	38
1	-	D	354777-1	WIRE DISC, PLASTIC	37
1	-	A	22480-5	WASHER, SPRING	36
1	-	B	690212-1	POST, RAM	35
1	-	B	3-690786-3	SUPPORT, TERMINAL	34
1	-	C	462544-1	PLATE, BASE SPECIAL	33
1	-	A	690432-3	SCREW, ADJUSTMENT	32
1	-	B	462543-1	BLOCK, SCREW SPECIAL	31
1	-	B	455689-1	BLOCK, STRIP GUIDE ADJ	30
1	-	C	455671-1	PLATE, STRIP GUIDE	29
1	-	C	1-455888-0	SPACER, FRONT SHEAR DEP	28
2	-	A	1-22284-0	SPRING, DRAG	27
1	-	B	690546-1	LEVER, DRAG RELEASE	26
1	-	B	240792-1	DRAG, TERMINAL	25
1	-	D	6-690504-8	GUIDE, STRIP (REAR)	24
1	-	A	690438-1	GUIDE, STRIP (FRONT)	23
					22
1	-	A	463756-1	GUIDE, SCRAP	21
					20
REF	-	C	462615-1	STRIPPER	19
					18
					17
					16
					15
					14
					13
1	-	A	5-22280-0	SPRING, SHEAR	12
1	-	B	690461-2	STOP, SHEAR (FRONT)	11
1	-	B	462548-1	HOLDER, SHEAR (FRONT) SP	10
1	-	B	462547-1	SHEAR, FLOAT (FRONT) SP	9
1	-	C	1-662185-1	ANVIL	8
					7
					6
1	-	A	462838-8	DEPRESSOR, SHEAR (FRONT) SP	5
1	-	B	238011-7	SPACER, BLOCK CRIMPER	4
1	-	C	7-456135-9	CRIMPER, INSULATION	3
1	-	C	1-455888-0	SPACER, CRIMPER	2
1	-	C	3-456404-6	CRIMPER, WIRE	1

QTY	REV	TER	APPL SPEC	DESCRIPTION	ITEM NO
-1	U/M	DWG SIZE	PART NO	DESCRIPTION	ITEM NO

DIMENSIONS IN INCHES. DO NOT SCALE PRINT. TOLERANCES UNLESS OTHERWISE SPECIFIED:
 2 PLC DEC ±
 3 PLC DEC ±
 4 PLC DEC ±
 ANGLES ±
 SURF TEXTURE: ✓
 REMOVE BURRS, BREAK SHARP EDGES R.015 MAX

MATL: - HT TR: - FIN: -
 DR: B.HIGMAN 250CT05 APP: T.ELBIN 250CT05
 CHK: - REL: -
AMP Tyco Electronics Harrisburg, PA 17105-3608
 NAME: STRIPPER CRIMPER APPLICATOR MACHINE REF: STRIPPER CRIMPER
 SCALE: - DWG NO: 567986 SHEET: 1 OF 1 REV: B
 CAGE CODE: 00779 CUSTOMER AND ASSEMBLY DRAWING RESTRICTED TO:

- 1 RECOMMENDED SPARE PARTS.
- 2 GREASE LIGHTLY.
- 3 ITEM NOT SHOWN
- 4 REAR STRIP GUIDE TO GUIDE ON INSULATION BARREL.

