



125 MHz IF Saw Filter

Part Number: AM125S694



Parameters Description	Unit	Minimum	Typical	Maximum
Center Frequency (Fo)	MHz	124.85	125.0	125.15
Insertion Loss at Fo	dB	-	12.0	13.50
Amplitude Ripple at Fo ± 13.5 MHz	dBp-p	-	0.35	0.80
Group Delay Variation at Fo ± 13.5 MHz	nsec	-	20	50
Absolute Delay at Fo	usec	-	0.68	-
Bandwidth at -1.0 dB	MHz	29.0	29.9	-
Bandwidth at -3.0 dB	MHz	30.0	31.1	-
Bandwidth at -40.0 dB	MHz	-	36.9	37.5
Temperature Coefficient	ppm/°C	-	-86	-
Attenuation Rejection				
Lower Sidelobe	dB	40	48	-
Upper Sidelobe	dB	40	45	-

Parameters Description	Unit	Minimum	Typical	Maximum
Operation Temperature Range	°C	-20	-	+70
Storage Temperature Range	°C	-40	-	+85
Maximum DC Voltage	V	-	-	10
Maximum Input Power	dBm	-	-	10
Source Impedance (Single Ended) ₁	Ω	-	50	-
Load Impedance (Single Ended) ₁	Ω	-	50	-
Package Size and Type	13.3 x 6.5 x 1.8 mm		V	

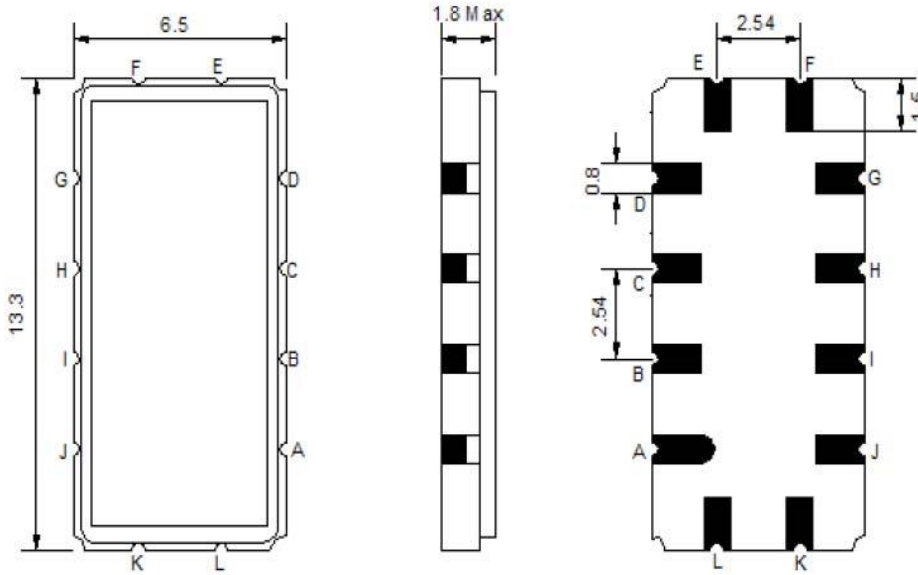


125 MHz IF Saw Filter

Part Number: AM125S694

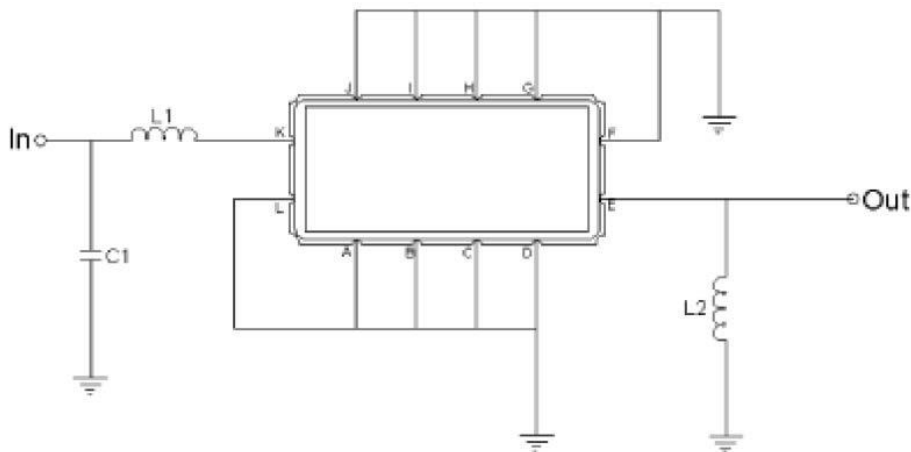


Outline Drawing:



Pin Description	
Ground	A B C D F G H I J L
Input	K
Output	E

Testing Environment:



Test Fixture & Values	
Input	L1=56nH, C1=30pF
Output	L2=39nH,
Source/Load Impedance	50 Ω



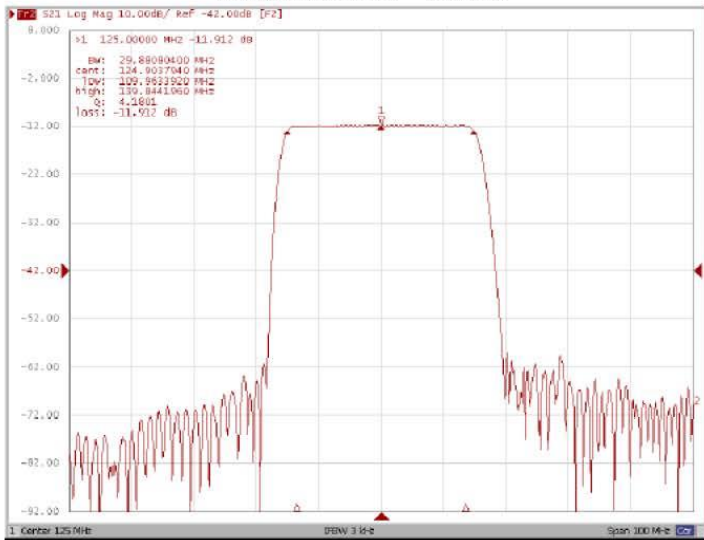
125 MHz IF Saw Filter

Part Number: AM125S694

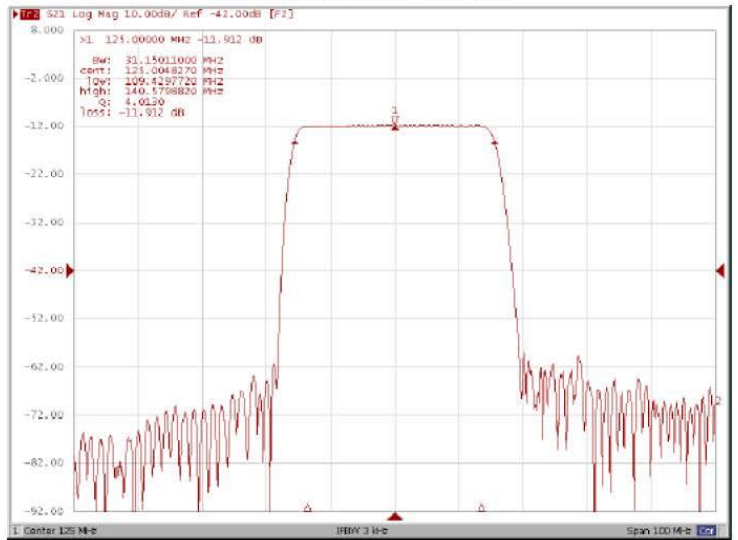


Frequency Response:

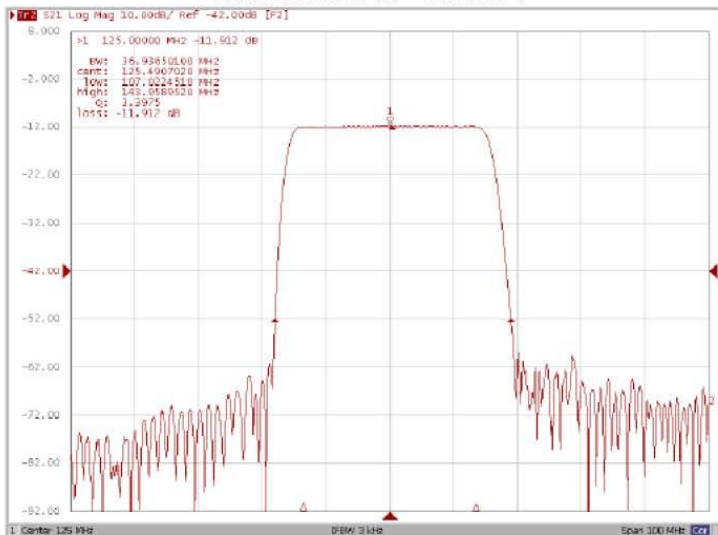
Bandwidth at -1.0 dB



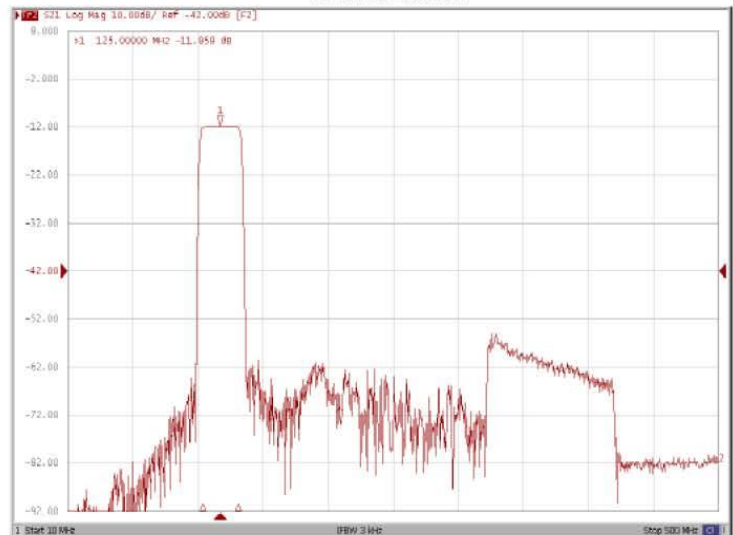
Bandwidth at -3.0 dB



Bandwidth at -40.0 dB



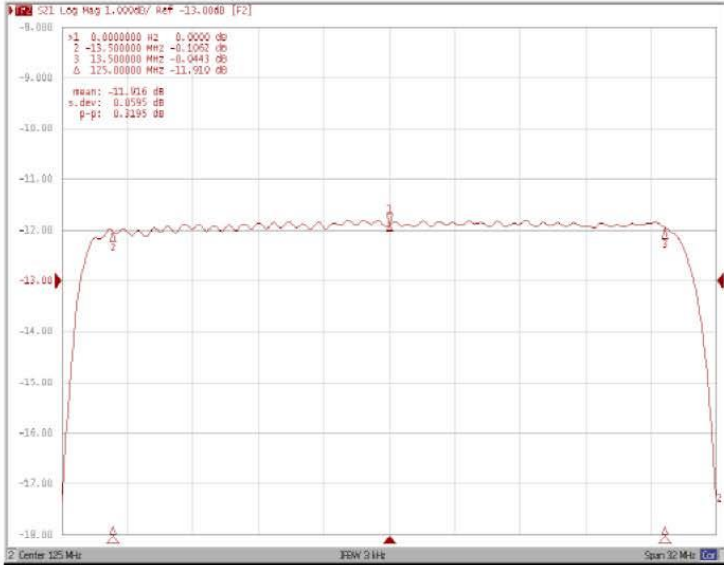
Wide-Band



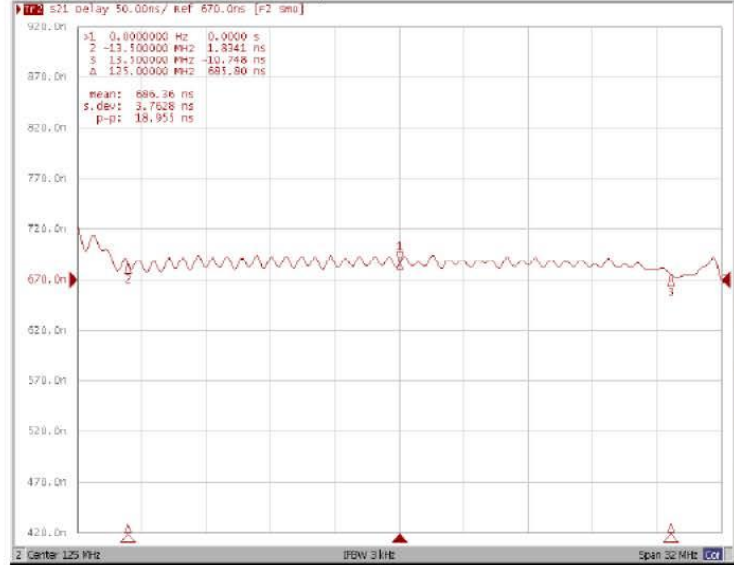


Frequency Response:

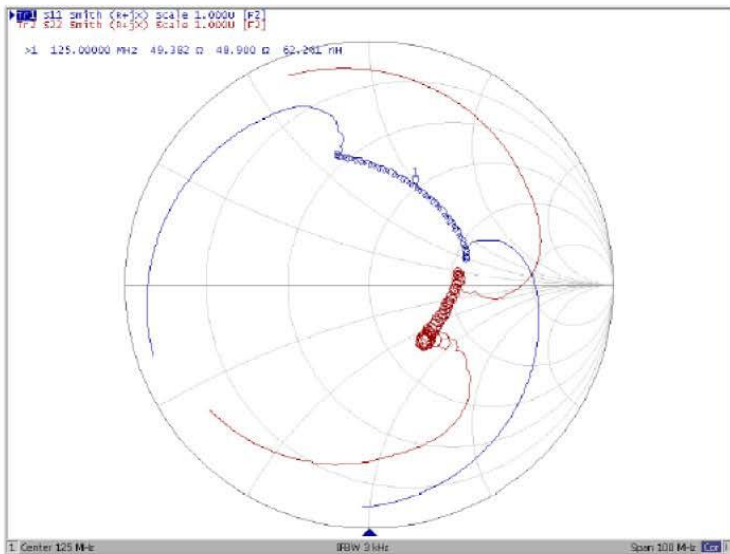
Ripple Variation Fo±13.5MHz



Group Delay Variation Fo±13.5MHz



Smith Chart



SWR

