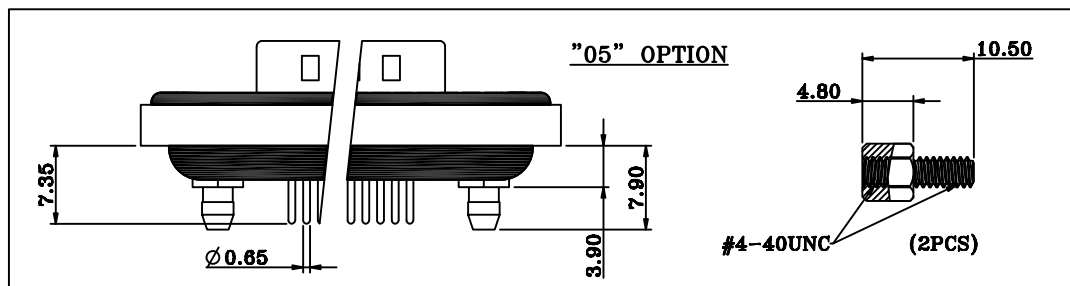
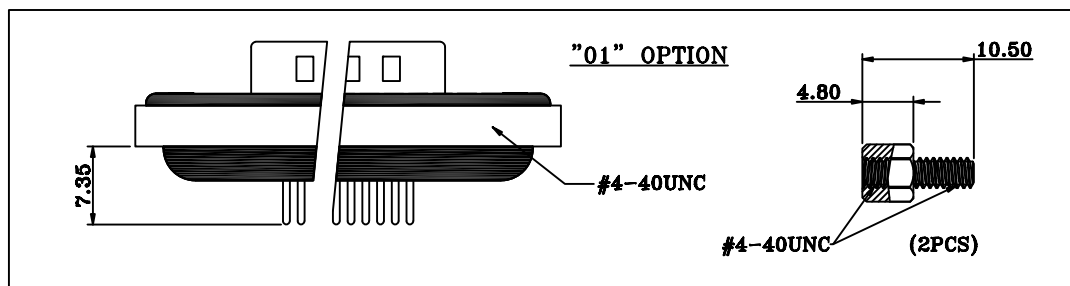


| DIMENSIONS(mm) | | | |
|----------------|-------|-------|-------|
| SIZE | A | B | C |
| 9 | 39.50 | 25.00 | 16.90 |
| 15 | 48.00 | 33.30 | 25.25 |
| 25 | 61.50 | 47.05 | 38.95 |
| 37 | 77.80 | 63.50 | 55.40 |

NOTE:

| | |
|------------------|------------------------------|
| MATERIAL | |
| HOUSING | PBT UL94V-0, BLACK |
| FLANGE | PBT UL94V-0, BLACK |
| CONTACT | BRASS, PLATING P/N KEY BELOW |
| SHELL | STEEL, NICKEL |
| O-RING | SILICONE |
| SEALING COMPOUND | EPOXY |
| HARDWARE | BRASS; NICKEL PLATED |

HARDWARE OPTIONS



ELECTRICAL

| | |
|-----------------------|----------------|
| RATED CURRENT | 5A |
| VOLTAGE | 1000 VAC 1 MIN |
| INSULATOR RESISTANCE | 5 GOhms MIN. |
| CONTACT RESISTANCE | 10 mOhms MAX. |
| WATER PROOF | IP67 |
| ENVIRONMENT | |
| OPERATION TEMPERATURE | -25°C TO +85°C |

SDF-VYY-113LYYY

| | |
|--------------------------------|---|
| SERIES | SDF = STANDARD DSUB FLANGE |
| CONTACT TYPE | V = VERTICLE PCB MOUNT |
| POSITIONS | 09 15 25 37 |
| GENDER | 1 = MALE |
| HARDWARE OPTIONS | 01 = 4-40 THREADED INSERTS/4-40 JACKSCREWS 05 = 4-40 THREADED BOARDLOCKS/4-40 JACKSCREWS |
| CONTACT PLATING OPTIONS | 1 = GOLD FLASH 2 = 30u" GOLD PLATING |

RoHS COMPLIANT



THESE DRAWINGS AND SPECIFICATIONS ARE THE PROPERTY OF NorComp AND SHALL NOT BE REPRODUCED, COPIED OR USED AS THE BASIS FOR THE MANUFACTURE OR SALE OF APPARATUS WITHOUT WRITTEN PERMISSION.

DRAWN:
J. KADEL
DATE:
03/02/2020

TOLERANCES
X. ±0.40
.X ±0.30
.XX ±0.20
.XXX ±0.10

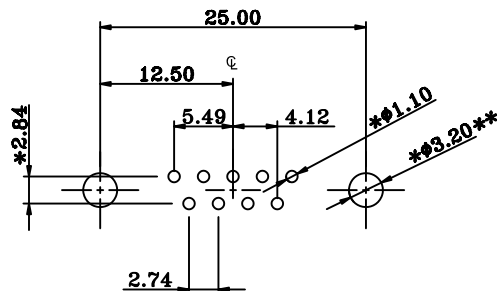
UNITS = mm DO NOT SCALE FROM DRAWING

NorComp

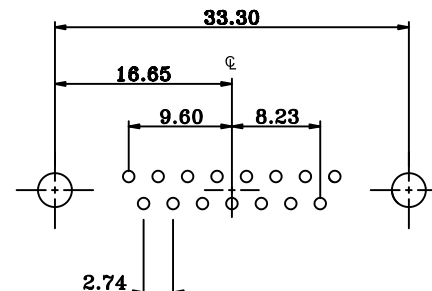
| | | | |
|---------------|------------|-----------------|----------|
| SCALE: NTS | SHEET 1 | OF 2 | REV 0 |
| DWG NO. | | SDF-VYY-113LYYY | |

****ø3.20MM HOLES NOT NEEDED FOR "01" HARDWARE OPTION**

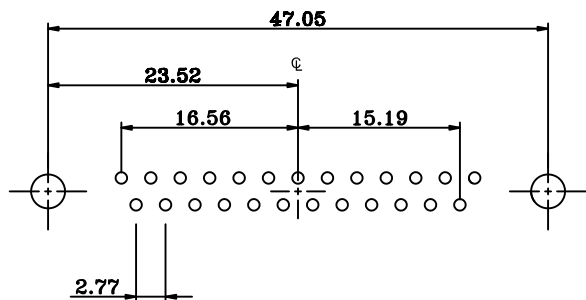
09 POSITION



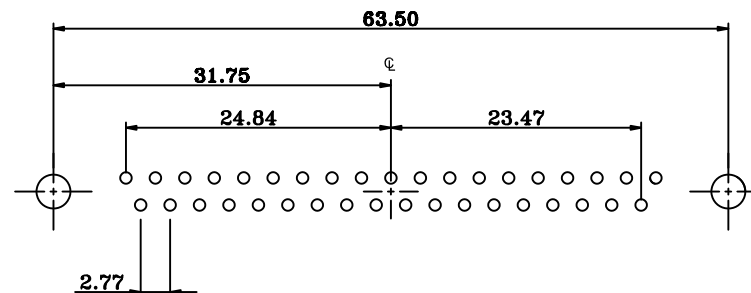
15 POSITION



25 POSITION



37 POSITION



RECOMMENDED PCB LAYOUT

***TYPICAL // HOLE SIZE MAY NOT BE SUITABLE FOR YOUR SPECIFIC APPLICATION**

RoHS COMPLIANT



THESE DRAWINGS AND SPECIFICATIONS ARE THE PROPERTY OF NorComp AND SHALL NOT BE REPRODUCED, COPIED OR USED AS THE BASIS FOR THE MANUFACTURE OR SALE OF APPARATUS WITHOUT WRITTEN PERMISSION.

DRAWN:
J. KADEL
DATE:
03/02/2020

TOLERANCES
X. ±0.40
.X ±0.30
.XX ±0.20
.XXX ±0.10

UNITS = mm

DO NOT SCALE FROM DRAWING

NorComp

SCALE:
NTS
DWG NO.

SHEET OF
2 2

REV
0

SDF-VYY-113LYYY