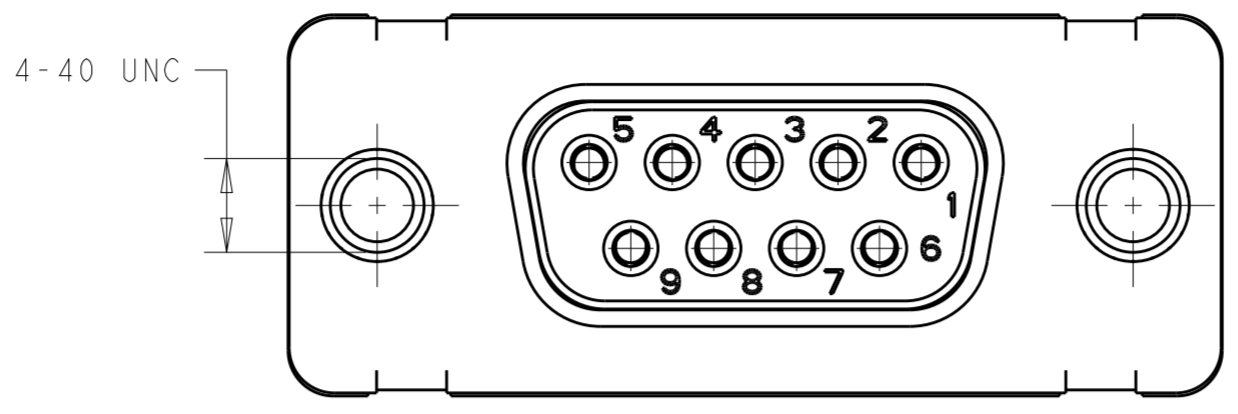
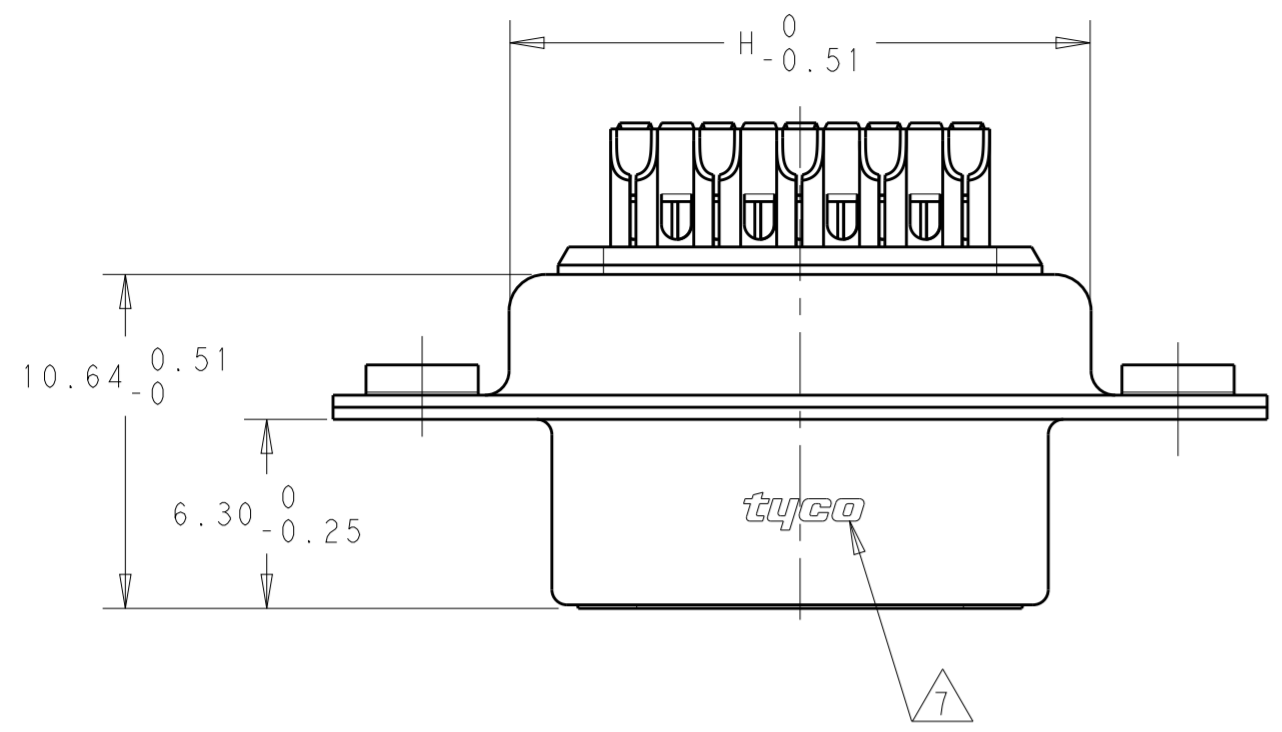
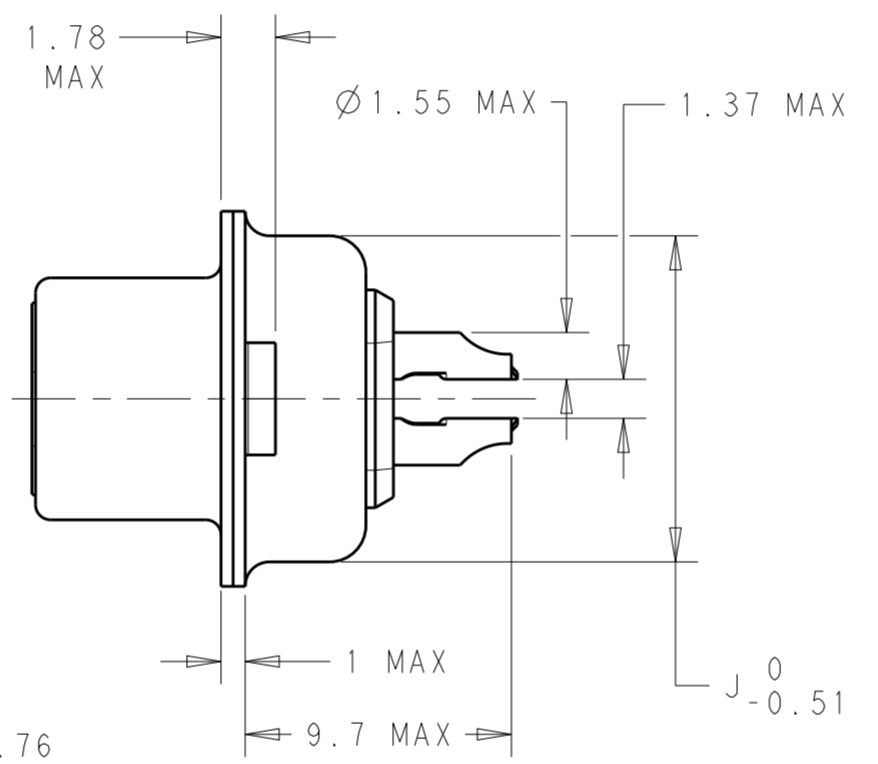
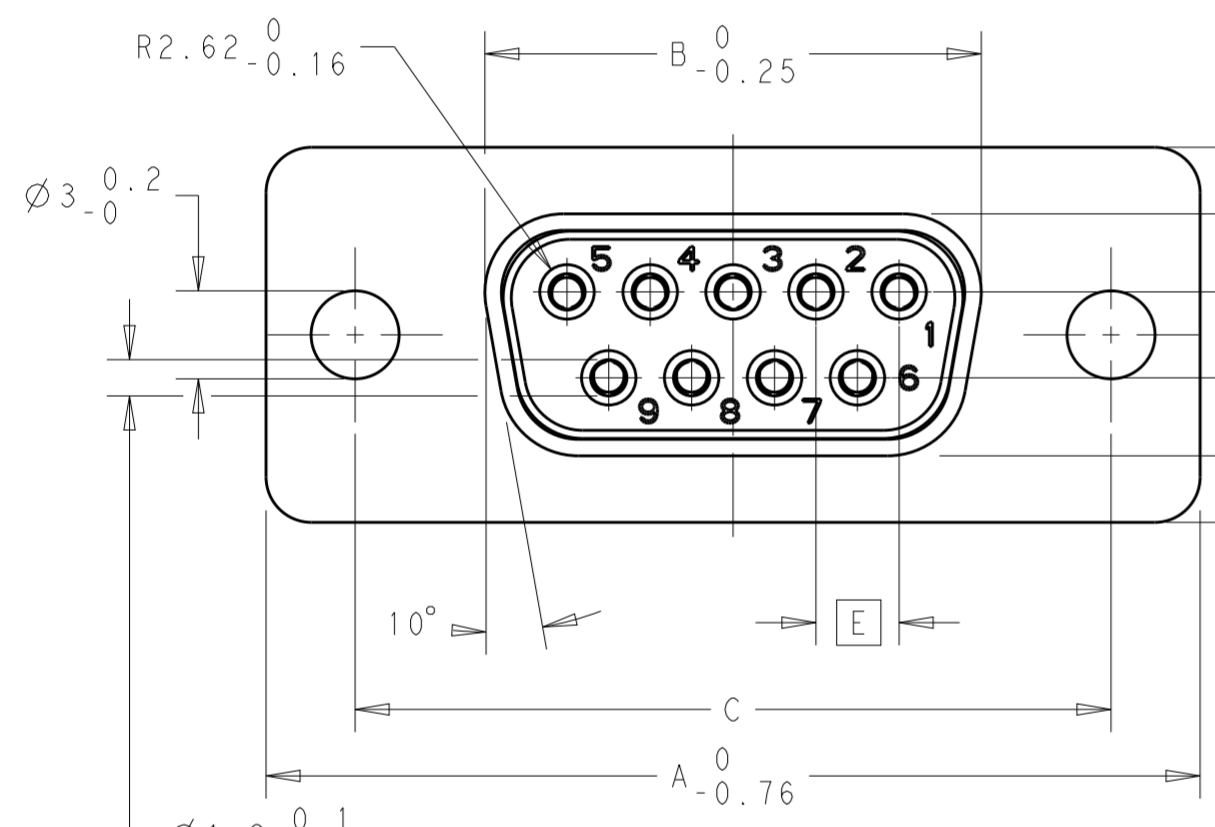
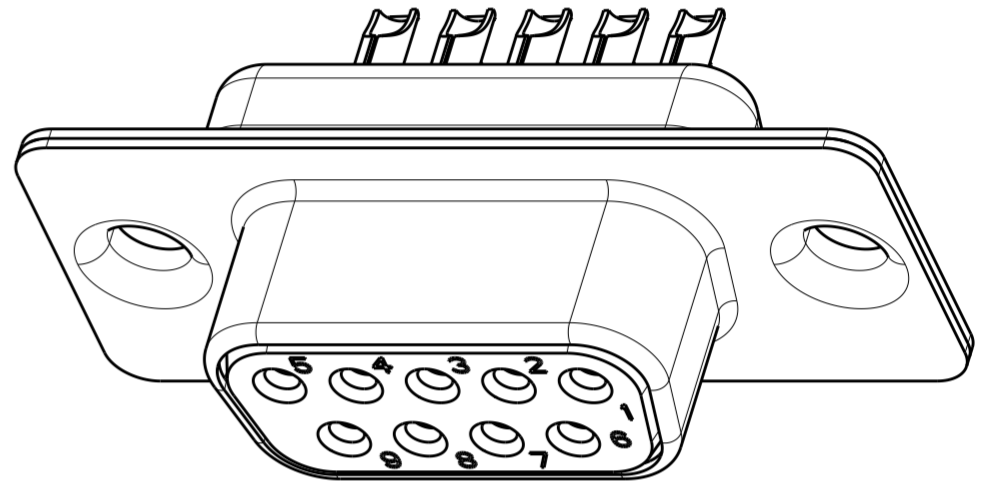
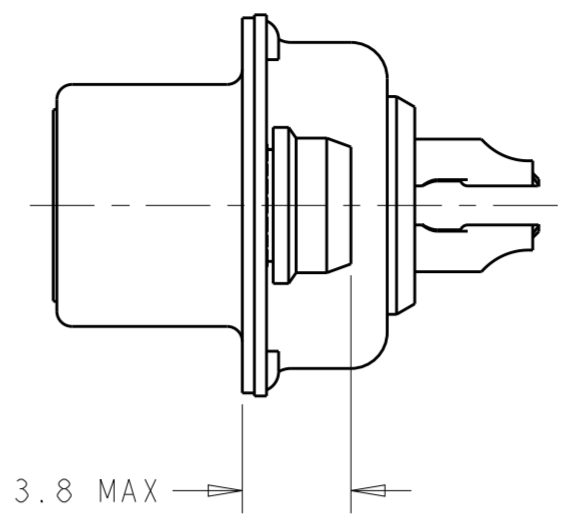


THIS DRAWING IS UNPUBLISHED. RELEASED FOR PUBLICATION 2011
 © COPYRIGHT 2011 ALL RIGHTS RESERVED.

| LOC | | DIST | | REVISIONS | | | |
|-----|-----|---------------------------|-----------|-----------|------|--|--|
| P | LTR | DESCRIPTION | DATE | DWN | APVD | | |
| GP | 00 | | | | | | |
| | B | REDRAWN PER ECO-12-008266 | 27AUG2012 | CJV | CWR | | |
| | C | REVISED PER ECO-13-007439 | 09JUL2013 | CJV | CWR | | |
| | D | REVISED PER ECO-15-007873 | 20JUN2015 | AP | SB | | |
| | E | REVISED PER ECO-15-015465 | 13MAY2016 | CJV | DLG | | |



FLANGES WITH 4-40 UNC SELF-LOCKING NUTS TORQUE RETENTION ≥80NCM



- 9 POSITION VERSION SHOWN.
- CONTACTS ARE STAMPED AND FORMED.
- PACKAGED IN BLISTER PACKS.
- PLATING DETAILS: ALL MEET PERFORMANCE LEVEL INDICATED IN TABLE PER DIN 41652.
 UNDERPLATE: NICKEL OVER ENTIRE CONTACT
 PERFORMANCE LEVEL 1 CONTACT MATING SURFACE: GOLD
 PERFORMANCE LEVEL 2 CONTACT MATING SURFACE: GOLD
 SOLDER CUP END: MATTE TIN
 SHELL PLATING: BRIGHT TIN OVER NICKEL
- 50 CONTACT VERSION HAS 3 ROWS.
- 4-40 UNC INSERTS COLORED BLUE.
- ALL PARTS MARKED WITH TE LOGO.

FLANGES WITH HOLES
 ALL CONTACTS

| | | | | | | | | | | | | | |
|-------------------|---|------------------------|-------|-------|-------------------|-------|-------|------|-------|-------|-----------------|---------------------|-----------------------------|
| OBSOLETE | 2 | 3.0 DIAMETER HOLE | 67.31 | 52.55 | 61.10 +0.14/-0.11 | 10.87 | 15.75 | 2.76 | 55.58 | 13.82 | 50 | V42254-A1115-B250 | 1393740-7 |
| | 2 | 3.0 DIAMETER HOLE | 69.70 | 54.96 | 63.50 ±0.13 | 8.02 | 12.93 | 2.76 | 57.96 | 10.97 | 37 | V42254-A1115-B237 | 4-1393483-1 |
| | 2 | 3.0 DIAMETER HOLE | 53.42 | 38.50 | 47.04 ±0.13 | 8.02 | 12.93 | 2.76 | 41.53 | 10.97 | 25 | V42254-A1115-B225 | 4-1393483-0 |
| | 2 | 3.0 DIAMETER HOLE | 39.52 | 24.79 | 33.30 +0.15/-0.10 | 8.02 | 12.93 | 2.74 | 27.76 | 10.97 | 15 | V42254-A1115-B215 | 3-1393483-9 |
| OBSOLETE | 2 | 3.0 DIAMETER HOLE | 31.19 | 16.46 | 25.00 +0.12/-0.13 | 8.02 | 12.93 | 2.74 | 19.53 | 10.97 | 9 | V42254-A1115-B209 | 3-1393483-8 |
| | 1 | 3.0 DIAMETER HOLE | 53.42 | 38.50 | 47.04 ±0.13 | 8.02 | 12.93 | 2.76 | 41.53 | 10.97 | 25 | V42254-A1115-B125 | 3-1393483-7 |
| | 1 | 3.0 DIAMETER HOLE | 31.19 | 16.46 | 25.00 +0.12/-0.13 | 8.02 | 12.93 | 2.74 | 19.53 | 10.97 | 9 | V42254-A1115-B109 | 3-1393483-6 |
| | 2 | 4-40 SELF-LOCKING NUTS | 69.70 | 54.96 | 63.50 ±0.13 | 8.02 | 12.93 | 2.76 | 57.96 | 10.97 | 37 | V42254-A1112-B237 | 2-1393483-2 |
| | 2 | 4-40 SELF-LOCKING NUTS | 53.42 | 38.50 | 47.04 ±0.13 | 8.02 | 12.93 | 2.76 | 41.53 | 10.97 | 25 | V42254-A1112-B225 | 2-1393483-1 |
| | 2 | 4-40 SELF-LOCKING NUTS | 39.52 | 24.79 | 33.30 +0.15/-0.10 | 8.02 | 12.93 | 2.74 | 27.76 | 10.97 | 15 | V42254-A1112-B215 | 2-1393483-0 |
| | 2 | 4-40 SELF-LOCKING NUTS | 31.19 | 16.46 | 25.00 +0.12/-0.13 | 8.02 | 12.93 | 2.74 | 19.53 | 10.97 | 9 | V42254-A1112-B209 | 1-1393483-9 |
| PERFORMANCE LEVEL | | FLANGE OPTION | A | B | C | D | E | F | H | J | NO OF POSITIONS | SIEMENS PART NUMBER | TE CONNECTIVITY PART NUMBER |

THIS DRAWING IS A CONTROLLED DOCUMENT. DIMENSIONING AND TOLERANCING PER ASME Y14.5M-2009

DIMENSIONS: mm

TOLERANCES UNLESS OTHERWISE SPECIFIED:
 0 PLC ±
 1 PLC ±
 2 PLC ±
 3 PLC ±
 4 PLC ±
 ANGLES ±1°
 FINISH

MATERIAL: -

APVD: RAGHAVENDRA 06MAR2012
 CHK: CARL ROHDE 06MAR2012
 APVD: CARL ROHDE 06MAR2012

NAME: D-SUB SOLDERING LUGS, FEMALE CONNECTOR

SIZE: A2 CAGE CODE: 00779 DRAWING NO: C-1-1393483-9 RESTRICTED TO: -

SCALE: 4:1 SHEET 1 OF 1 REV E

CUSTOMER DRAWING