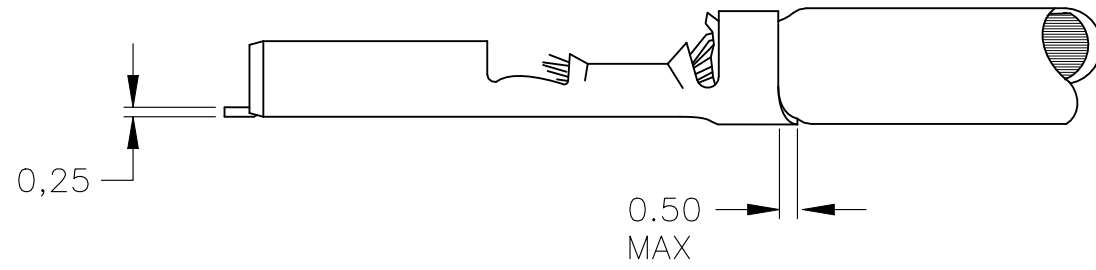
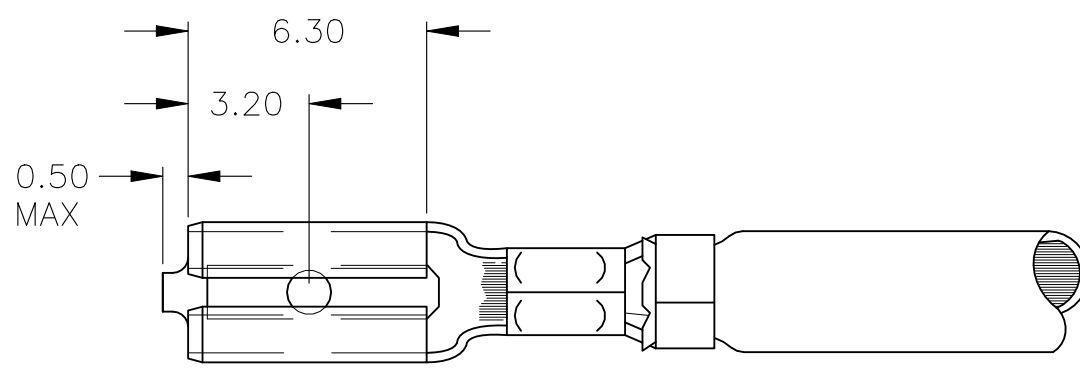
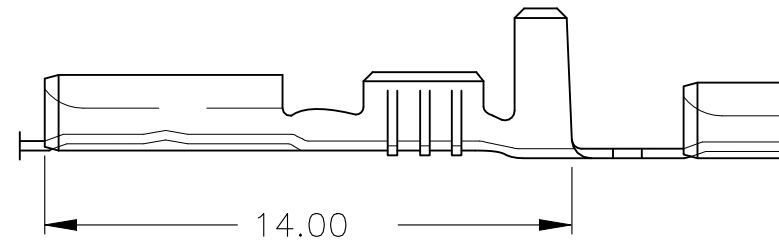
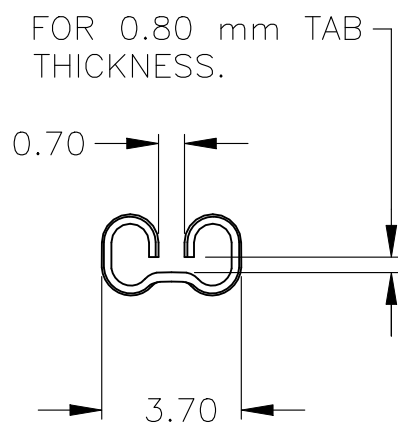
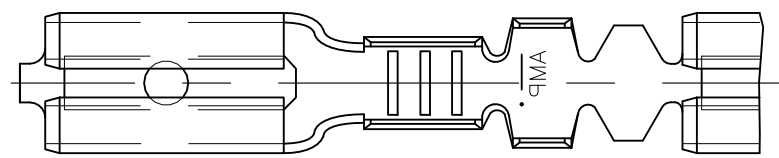


REVISIONS					
P	LTR	DESCRIPTION	DATE	DWN	APVD
	A1	REVISED PER ECR-19-018140	23DEC2020	SS	EW



- ① FOR USE ON MINIATURE APPLICATORS (LEFT-RIGHT FEED) AND STANDARD APPLICATORS (RIGHT-LEFT FEED).
- 2 REELED WITH PAPER COVER.
- ③ OBSOLETE PARTS: OBSOLETE CIS STREAMLINING PER D.RENAUD/D.SINISI.
- ④ OBSOLETE

OBSOLETE

NOTES	FINISH	MATERIAL	PART NUMBER
④ ③ ④ ①	TINPLATED	PH.BRONZE	160918-4
	UNPLATED	PH.BRONZE	160918-3
	TINPLATED	BRASS	160918-2
	UNPLATED	BRASS	160918-1

THIS DRAWING IS A CONTROLLED DOCUMENT.		DWN R.v.Lokven 17.09.87	STE TE Connectivity		
		CHK A.B. 18.09.87			
		APVD L.v.Soest 22.09.87			
		PRODUCT SPEC	NAME .110 SRS FASTON RECEPTACLE.		
		APPLICATION SPEC			
		WEIGHT 0.000000	SIZE A3	CAGE CODE 00779	DRAWING NO C-160918
		CUSTOMER DRAWING		SCALE 5:1	SHEET 1 OF 1
				RESTRICTED TO -	REV A1

DIMENSIONS: mm	TOLERANCES UNLESS OTHERWISE SPECIFIED:
	0 PLC ± -
	1 PLC ± -
	2 PLC ± -
	3 PLC ± -
	4 PLC ± -
	ANGLES ± -
	FINISH -

WIRE RANGE	0.50 - 1.00 mm ²
INSUL. RANGE	1.40 - 2.30 DIA