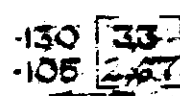
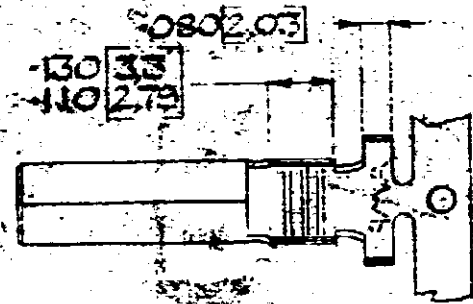
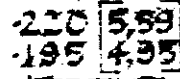


ANGLE (AMERICAN) PROJECTION

DIMENSIONS IN INCHES UNLESS NOTED OTHERWISE
DIMENSIONS THUS 1/8" 0.125" 1/16" 0.0625"

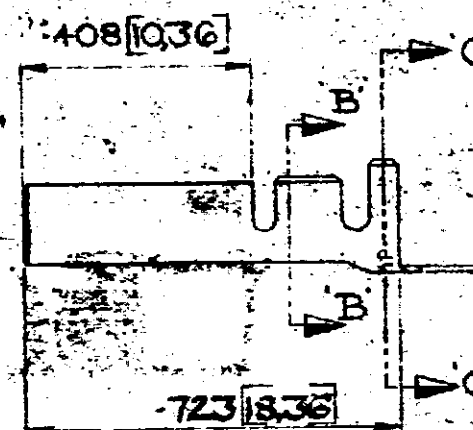


SECTION B-B



SECTION C-C

RELATION 0.80-1.20 [203-305]



ENGINEERING
DRAWING

SECTION PROJECTION ONLY	PART NO.	MATERIAL	FINISH
	153256-4	BRASS	SILVER
	0153256-3	BRASS	NONE
	0153256-2	BRASS	NONE
	0153256-1	BRASS	PREFIN
	PART NO.	MATERIAL	FINISH

<p>AMCRAFT-MARINE PRODUCTS GREAT BRITAIN LTD 1972</p>				<p>CUSTOMER COPY REFERENCE ONLY</p>			
<p>MATERIAL AND FINISH 013 [0.33] STOCK</p>				<p>AMP Industrial A DIVISION OF AMCRAFT-MARINE PRODUCTS GREAT BRITAIN LTD STAMFORD, MIDD</p>			
<p>C -2 OBSOLETED WIRE BARREL SERIZATION ADDED</p>		<p>A.B.H.5064</p>		<p>SEE TABLE</p>		<p>CLASS</p>	
<p>A -4 ADDED</p>		<p>DR. CHG. DATE</p>		<p>TOLERANCE EXCEPT AS NOTED</p>		<p>SCALE 4:1</p>	
<p>REVISION RECORD</p>		<p>DATE</p>		<p>REV. NO.</p>		<p>REV. NO. E A 0153256</p>	
<p>NAME: J. DODD</p>				<p>1/8" 3 DIA SOCKET IN MOUNTED</p>			