

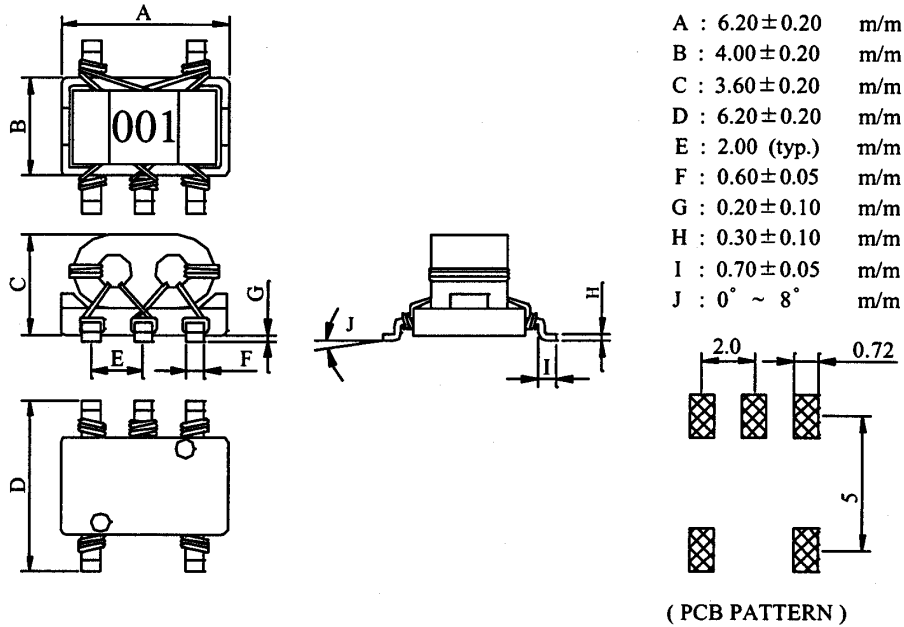
# SPECIFICATION FOR APPROVAL

REF :

PAGE: 1

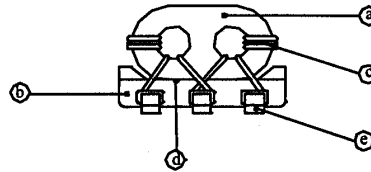
PROD. NAME	SMD BALUN TRANSFORMER	DWG NO.	BRN6036 Series
		ITEM NO.	

**I . MECHANICAL DIMENSIONS :**



**II . MATERIALS :**

- a. CORE : FERRITE RID CORE
- b. BASE : PHENOLIC
- c. WIRE : ENAMELLED COPPER WIRE
- d. ADHESIVE : EPOXY RESIN
- e. TERMINAL : TINNED COPPER PLATE



**III . FEATURES :**

- a. PAIRED WIRE COIL FOR HIGH STABILITY.
- b. BASE PIN TERMINAL TREATED, ALLOWING MOUNTING 'AS IS' ON A PCB.

**IV . APPLICATIONS :**

- a. DOUBLE BALANCE MIXERS, BROAD-BAND TRANSFORMERS, IMPEDANCE TRANSFORMERS, ETC.

AE-001A

**Bourns Inductive Solution**

# SPECIFICATION FOR APPROVAL

REF :

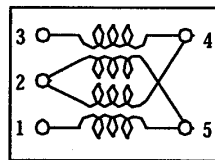
PAGE: 2

PROD. NAME	SMD BALUN TRANSFORMER	DWG NO.	BRN6036 Series
		ITEM NO.	

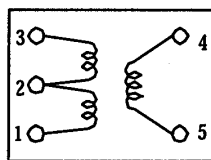
**V . ELECTRICAL CHARACTERISTICS :**

DWG NO.	WINDING TURNS	OPERATING FREQUENCY RANGE	INSERTION LOSS	PIN CONNECTION FIG.
BRN6036-0001S	2.0	30.0MHz- 850MHz	3.0dB max.	1
BRN6036-0002S	3.0	5.0MHz-1000MHz	3.0dB max.	1
BRN6036-0003S	4.0	9.0MHz-1700MHz	3.0dB max.	1
BRN6036-0004S	5.0	5.5MHz-1500MHz	3.0dB max.	1
BRN6036-0005S	1.0	20.0MHz- 400MHz	3.0dB max.	2
BRN6036-0006S	2.0	8.0MHz- 550MHz	3.0dB max.	2
BRN6036-0007S	3.0	3.5MHz-500MHz	3.0dB max.	2
BRN6036-0008S	4.0	2.0MHz-370MHz	3.0dB max.	2
BRN6036-0009S	1.0	100.0MHz- 500MHz	3.0dB max.	2
BRN6036-0010S	2.0	500.0MHz-850MHz	3.0dB max.	2
BRN6036-0011S	3.0	240.0MHz-500MHz	3.0dB max.	2
BRN6036-0012S	4.0	85.0MHz-380MHz	3.0dB max.	2
BRN6036-0013S	1.5	5.5MHz-850MHz	3.0dB max.	3
BRN6036-0014S	2.5	2.5MHz-2000MHz	3.0dB max.	3
BRN6036-0015S	3.5	1.2MHz-1700MHz	3.0dB max.	3
BRN6036-0016S	4.5	0.8MHz-1400MHz	3.0dB max.	3
BRN6036-0017S	5.5	0.6MHz-1300MHz	3.0dB max.	3
BRN6036-0018S	1.5	160.0MHz-2200MHz	3.0dB max.	4
BRN6036-0019S	2.5	55.0MHz-1700MHz	3.0dB max.	4
BRN6036-0020S	3.5	30.0MHz-1400MHz	3.0dB max.	4

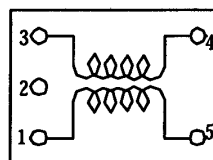
**VI . SCHEMATIC DIAGRAM :**



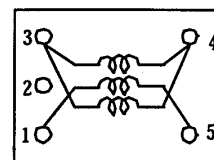
Double balanced  
Fig.1



Transformer  
Fig.2



Transformer  
Fig.3



Transformer  
Fig.4

AE-001A

**Bourns Inductive Solution**

# SPECIFICATION FOR APPROVAL

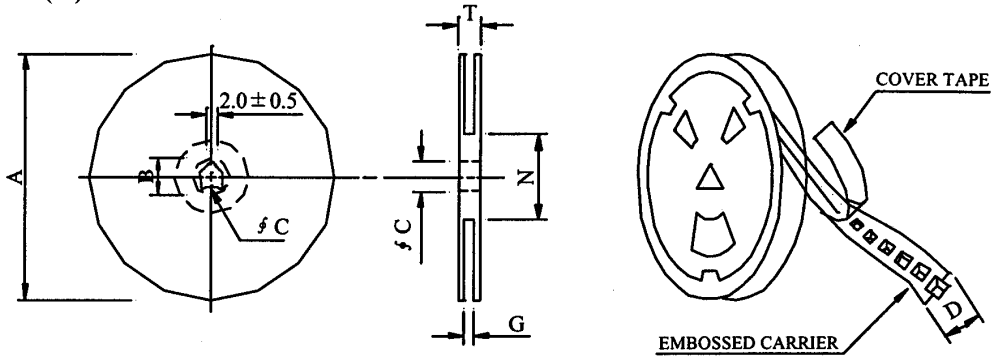
REF :

PAGE: 3

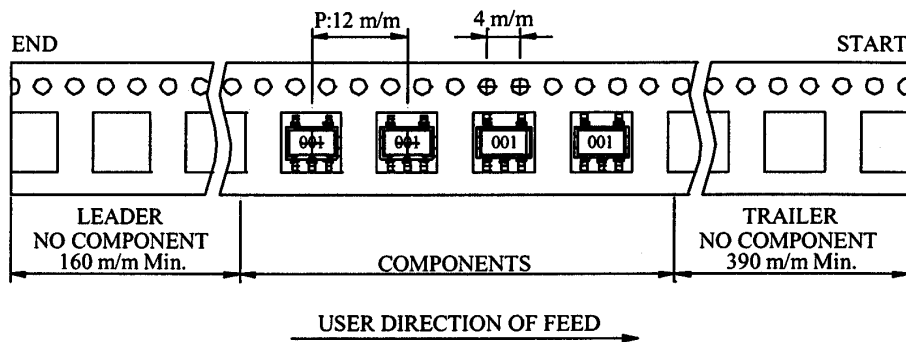
<b>PROD. NAME</b>	<b>SMD BALUN TRANSFORMER</b>	<b>DWG NO.</b>	<b>BRN6036 Series</b>
		<b>ITEM NO.</b>	

**VII . PACKAGING INFORMATION :**

**(1) CONFIGURATION**



※CARRIER TAPE WIDTH : D



**(2) DIMENSIONS**

Unit:m/m

STYLE	A	B	C	D	G	N	T
07 - 16	178	21 ± 0.8	13	16	18 <sup>+0</sup>	50 <sup>-0</sup>	22.4
13 - 16	330	21 ± 0.8	13	16	18 <sup>+0</sup>	50 <sup>-0</sup>	22.4

**(3) QTY & G.W. PER PACKAGE**

SERIES	INNER : REEL			OUTER : CARTON		
	QTY (PCS)	G.W. (gw)	STYLE	QTY (PCS)	G.W. (Kg)	SIZE (cm)
BRN6036	300	96	07 - 16	12,000	4.45	39 x 38 x 21.5
BRN6036	1,200	384	13 - 16	9,600	3.68	40 x 40 x 24

AE-001A

**Bourns Inductive Solution**

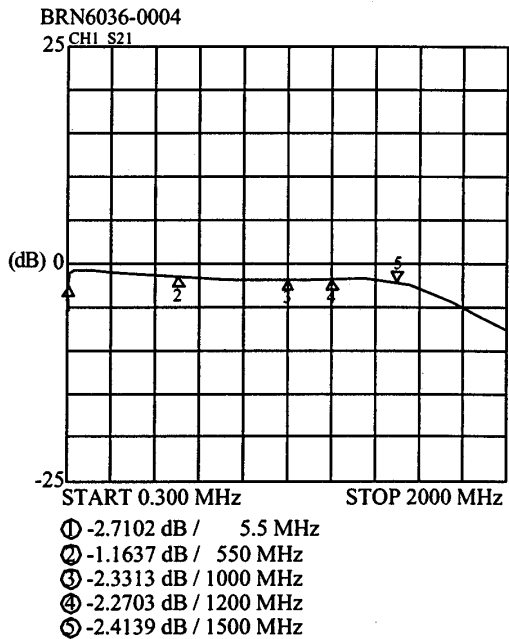
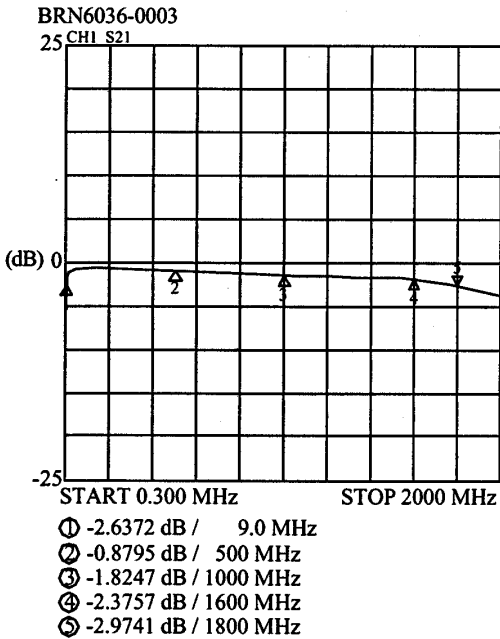
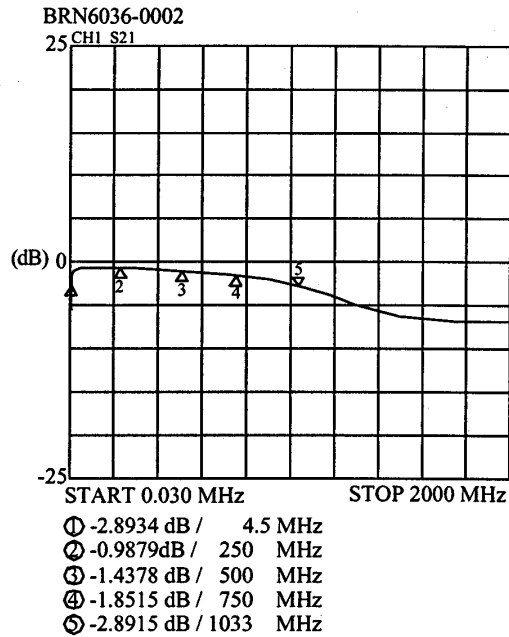
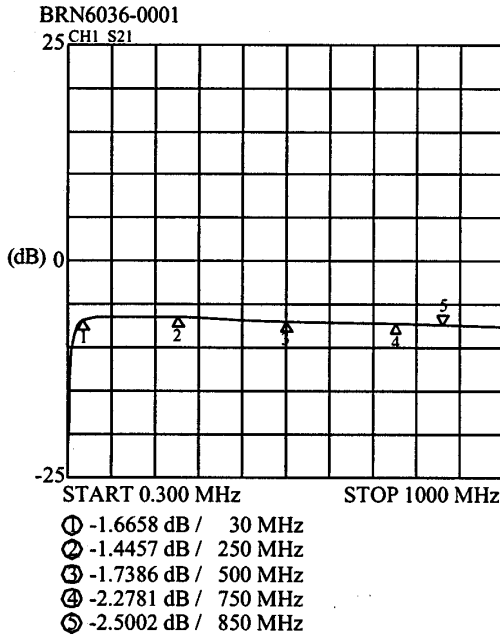
# SPECIFICATION FOR APPROVAL

REF :

PAGE: 4

<b>PROD. NAME</b>	<b>SMD BALUN TRANSFORMER</b>	<b>DWG NO.</b>	BRN6036 Series
		<b>ITEM NO.</b>	

**X . INSERTION LOSS TEST CURVE :**

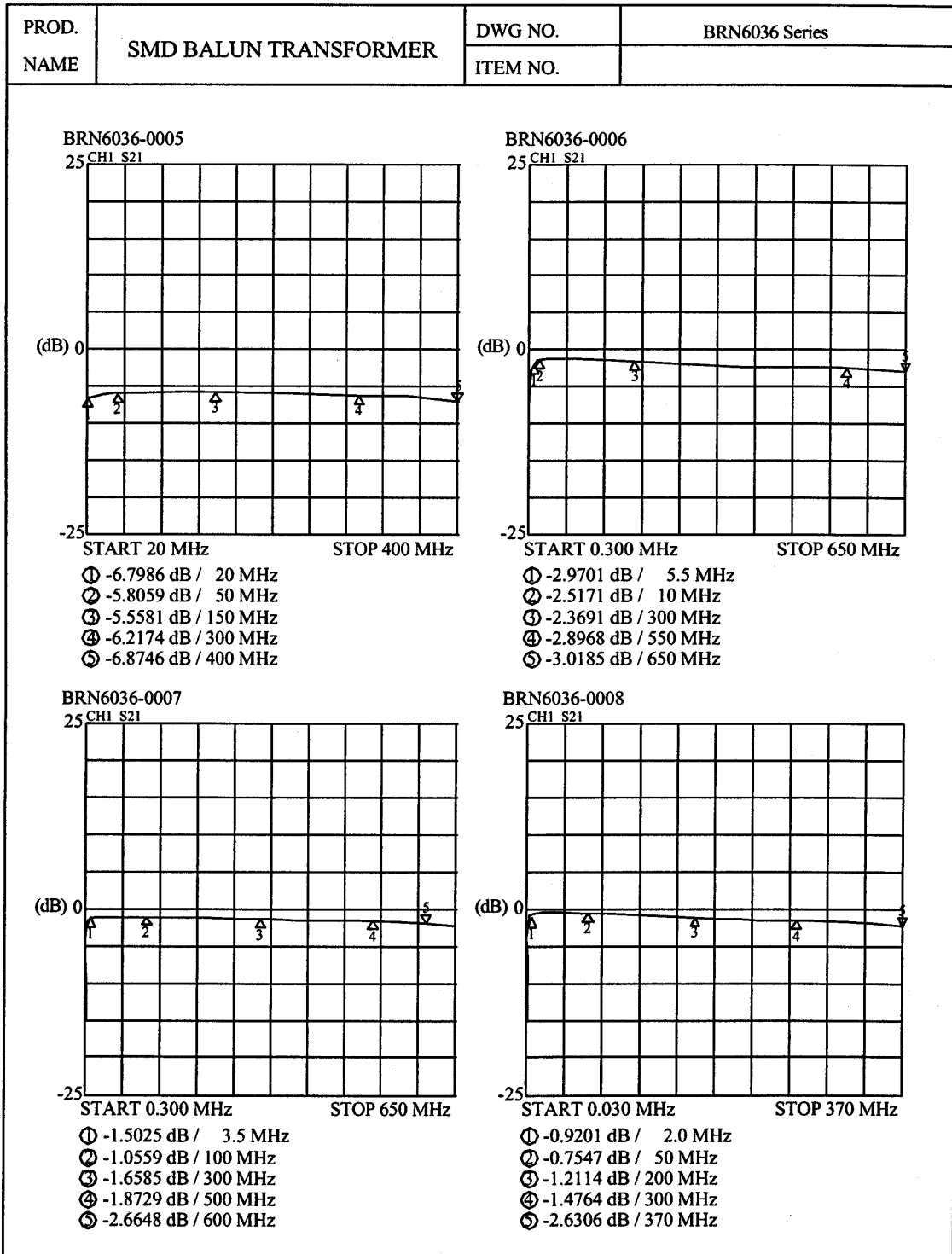


AE-001A

# SPECIFICATION FOR APPROVAL

REF :

PAGE: 5



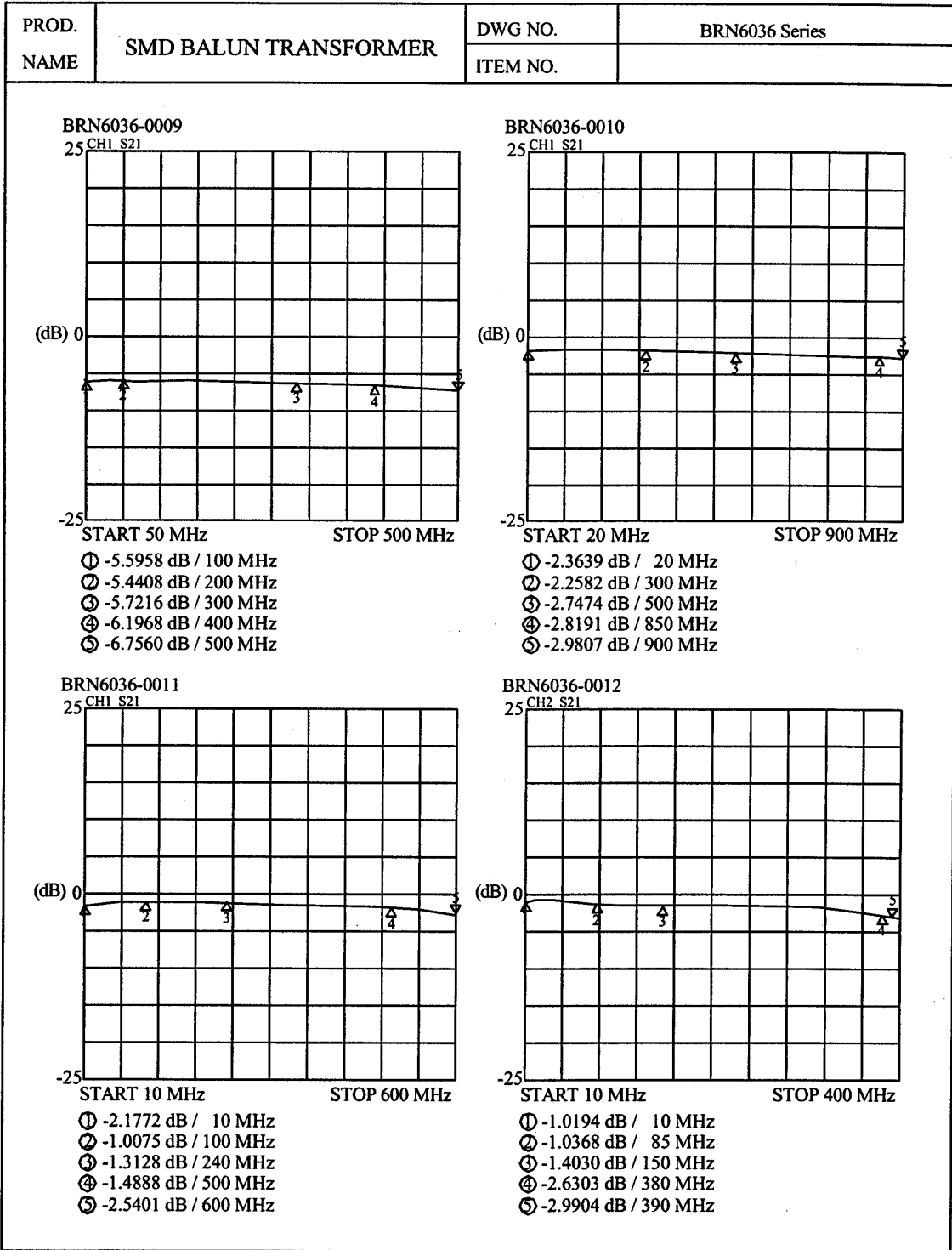
AE-001A

**Bourns Inductive Solution**

# SPECIFICATION FOR APPROVAL

REF :

PAGE: 6



AE-001A

**Bourns Inductive Solution**

# SPECIFICATION FOR APPROVAL

REF :

PAGE: 7

PROD. NAME	SMD BALUN TRANSFORMER	DWG NO.	BRN6036 Series
		ITEM NO.	
<div style="display: flex; justify-content: space-around;"> <div style="width: 48%;"> <p><b>BRN6036-0013</b> 25 CH1 S21</p> <p>(dB) 0 -25</p> <p>START 0.300 MHz STOP 2500 MHz</p> <ul style="list-style-type: none"> <li>① -2.4058 dB / 10 MHz</li> <li>② -2.5636 dB / 1000 MHz</li> <li>③ -2.4434 dB / 850 MHz</li> <li>④ -2.5226 dB / 1200 MHz</li> <li>⑤ -1.3914 dB / 2000 MHz</li> </ul> </div> <div style="width: 48%;"> <p><b>BRN6036-0014</b> 25 CH1 S21</p> <p>(dB) 0 -25</p> <p>START 0.300 MHz STOP 2500 MHz</p> <ul style="list-style-type: none"> <li>① -2.4797 dB / 6.0 MHz</li> <li>② -2.8760 dB / 1000 MHz</li> <li>③ -2.8448 dB / 850 MHz</li> <li>④ -2.6107 dB / 1200 MHz</li> <li>⑤ -2.8353 dB / 2000 MHz</li> </ul> </div> </div>			
<div style="display: flex; justify-content: space-around;"> <div style="width: 48%;"> <p><b>BRN6036-0015</b> 25 CH1 S21</p> <p>(dB) 0 -25</p> <p>START 0.300 MHz STOP 2500 MHz</p> <ul style="list-style-type: none"> <li>① -1.5440 dB / 6.0 MHz</li> <li>② -2.5877 dB / 600 MHz</li> <li>③ -2.8402 dB / 850 MHz</li> <li>④ -1.8911 dB / 1200 MHz</li> <li>⑤ -2.8265 dB / 1700 MHz</li> </ul> </div> <div style="width: 48%;"> <p><b>BRN6036-0016</b> 25 CH2 S21</p> <p>(dB) 0 -25</p> <p>START 0.300 MHz STOP 2500 MHz</p> <ul style="list-style-type: none"> <li>① -2.6800 dB / 5.0 MHz</li> <li>② -2.3717 dB / 600 MHz</li> <li>③ -1.7034 dB / 1000 MHz</li> <li>④ -1.4836 dB / 1200 MHz</li> <li>⑤ -2.5552 dB / 1400 MHz</li> </ul> </div> </div>			

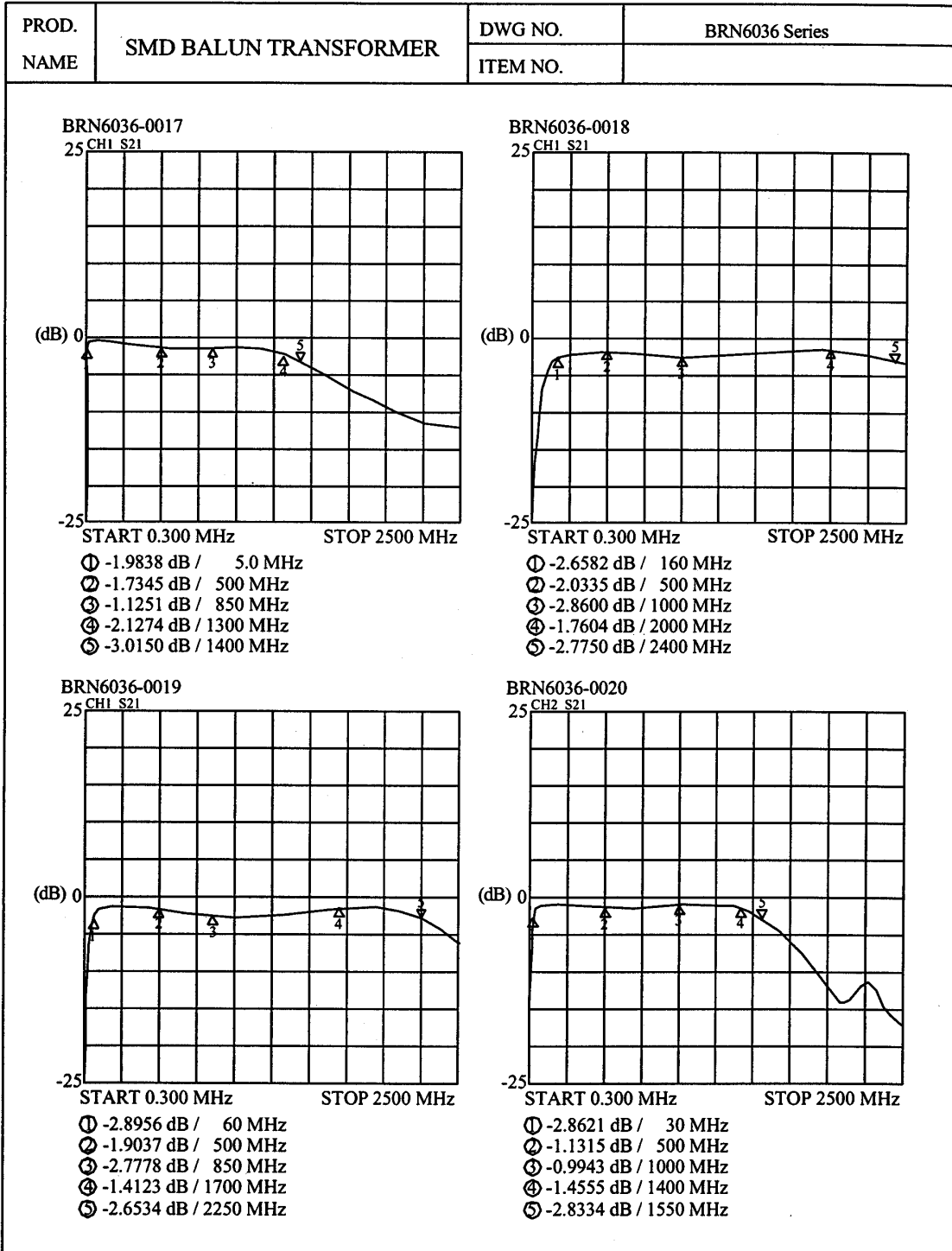
AE-001A

**Bourns Inductive Solution**

# SPECIFICATION FOR APPROVAL

REF :

PAGE: 8



AE-001A

**Bourns Inductive Solution**