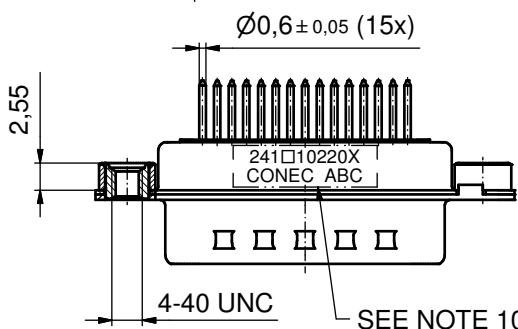
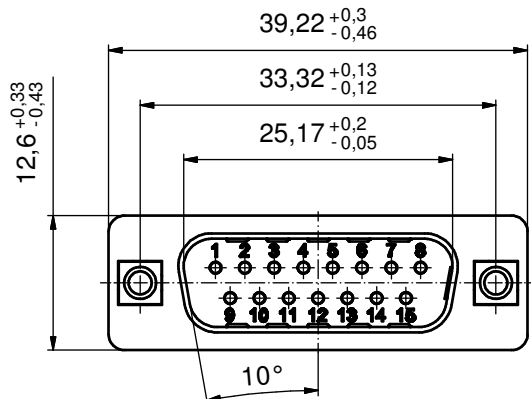
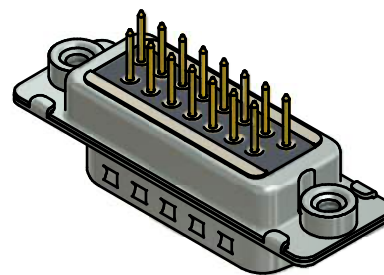
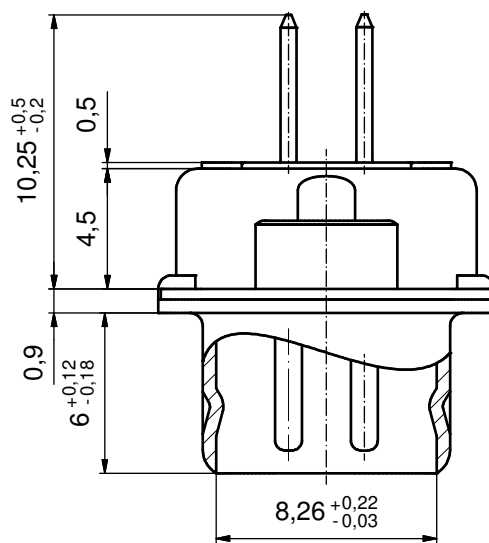
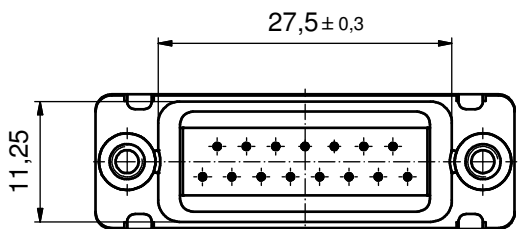


P.C.B. HOLE DRILLINGS
(P.C.B. TOP SIDE)

(5 : 1)



SEE NOTE 10



NOTES:

- FOR WAVESOLDERING (SOLDER BATH TEMPERATURE 260 °C FOR 5 SEC. AND SOLDER PREHEAT 100 °C FOR 30 SEC.)
- METALSHELLS: STEEL; min. 315µin TIN over 40-80µin NICKEL
- INSULATOR: HIGH TEMPERATURE PLASTIC UL 94 V-0, BLACK
- CONTACTS: COPPER ALLOY; PLATING (SEE PART NO.):
 PLEASE ADD A for GOLD FLASH over NICKEL (PREFERRED TYPE)
 PLEASE ADD B for 20µin HARD GOLD over min. 50µin NICKEL
 PLEASE ADD C for 30µin HARD GOLD over min. 50µin NICKEL
 CONTACTS TAILS PRETINNED
- THREADED INSERTS: COPPER ALLOY; min. 200µin TIN over 80µin NICKEL
- COLLARS: COPPER ALLOY; min 200µin TIN over 80µin NICKEL
- DIELECTRIC WITHSTANDING VOLTAGE: 424 VDC
- CAPACITANCE: 830pF ± 20%
- MAXIMUM TORQUE VALUE FOR THREAD: 6 in. LB
- CONNECTOR IS PART MARKED: 241 □ 10220X CONEC ABC (see note 4)

Directive 2002/95/EC RoHS compliant

THIS DRAWING MAY NOT BE COPIED OR REPRODUCED IN ANY WAY, AND MAY NOT BE PASSED ON TO A THIRD PARTY WITHOUT WRITTEN PERMISSION. OWNERSHIP AND COPYRIGHT OF CONEC GmbH

DO NOT ALTER CAD DRAWING BY HAND

tolerance			dim. in mm	
date	name			
drawn	29.10.13	Henneboel		
appd.	30.10.13	Lehmenkühler		
norm				
d-old				
a	Original			
rev.	description	date	name	

scale:	2:1 (5:1)		
material:	SEE NOTES		
title:	D-SUB FILTER MALE 15pos. SOLDER PIN STRAIGHT with threaded insert		
dwg no:	24K1A1471	DIN-A3 sh: 1	
part no:	241 □ 10220X (see note 4)		