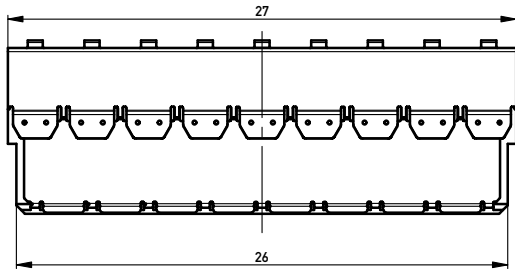
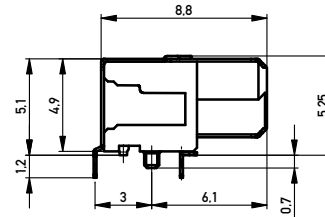
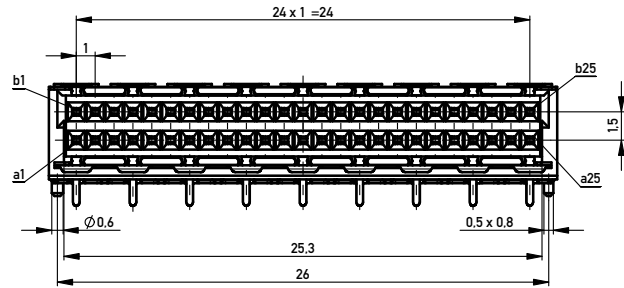
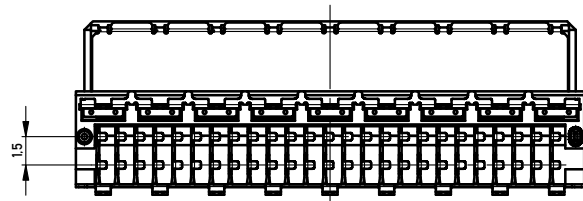
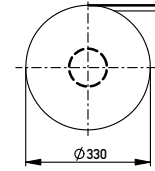
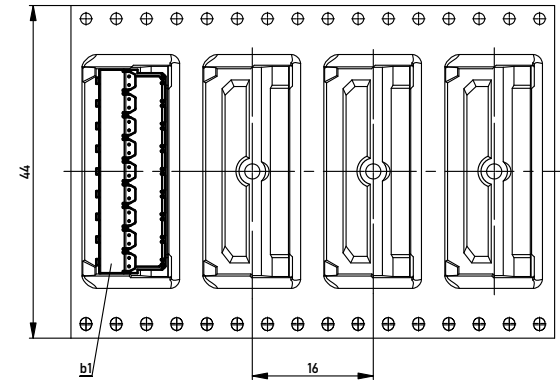


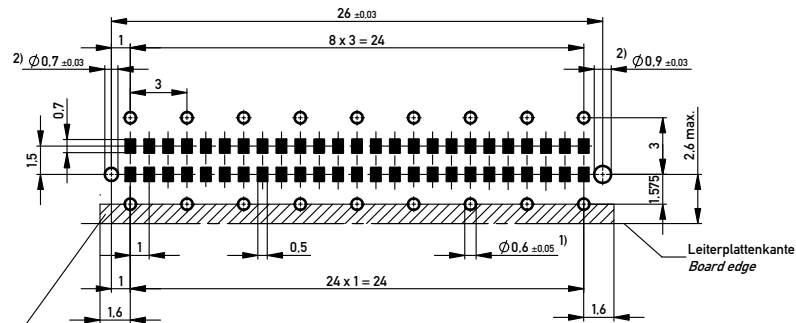
Verpackt im Gurt in Anlehnung an DIN IEC 60286-3  
 Tape on Reel Packaging according to DIN IEC 60286-3  
 Verpackungseinheit: 500 Stück  
 Packaging unit: 500 pcs



Abspulrichtung - Reel off Direction →



Leiterplatten-Layout Vorschlag / PCB-layout proposal



Schirmblechaufgeflechte berücksichtigen.  
 keine Durchkontaktierungen oder Leitungen möglich!  
 Consider shielding contact area, no vias or traces possible!

1) Fertigllochdurchmesser / Finished Via diameter

2) Durchmesser des Bohrers / Drill tool

Anforderungsstufe 1  
 Performance Level 1

Kontaktbereich vergoldet  
 Mating Area gold plating

Anschlussbereich verzinkt 4-6 µm  
 Terminal Area 4-6 µm tin plating

Koplanarität der Anschlüsse ≤ 0.1 mm  
 Coplanarity Area of Termination ≤ 0.1 mm

Information:		Tolerances		Scale: 5:1	
All rights reserved. Only for Information. To ensure that this is the latest version of this drawing, please contact one of the ERNI companies before using.		Subject to modification without prior notice. Drawing will not be updated.		Designation <b>Federl. 90° SMDTHR 50-pol. EMV</b> <b>Female 90° SMDTHR 50 cont. EMV</b>	
f	24.05.2015	ERNI		www.ERNI.com	374719
Index	Date	Class		MSPEED	I A2

Copyright by ERNI Production GmbH & Co. KG  
 Proprietary notice pursuant to §91 100ff. to be observed