

A

B

C

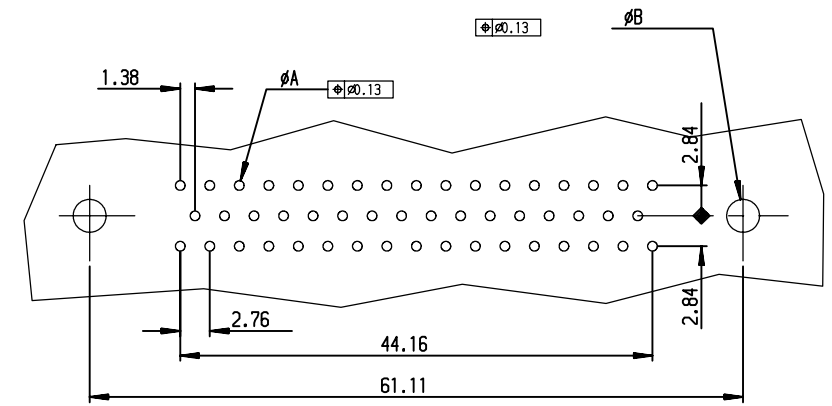
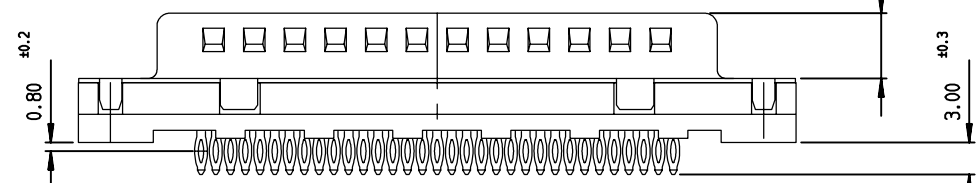
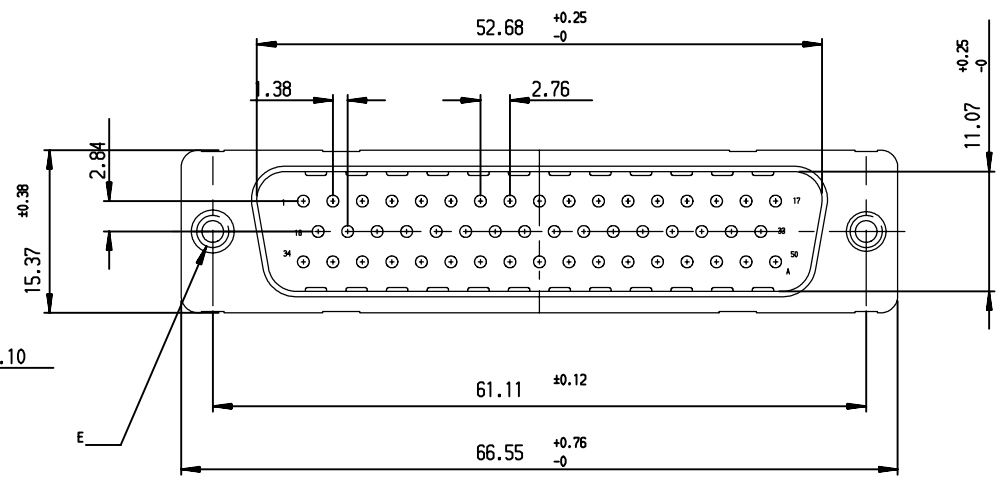
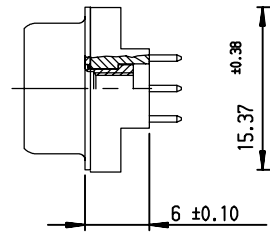
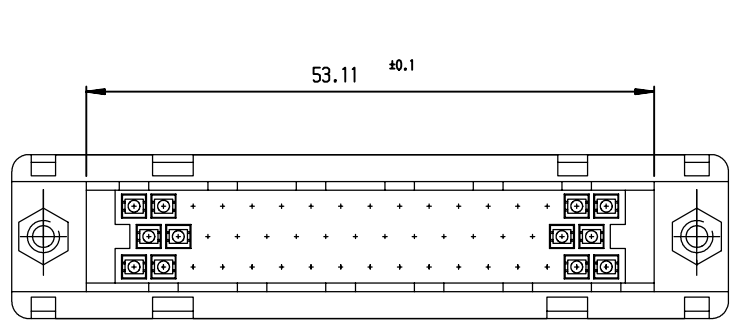
D

A

B

C

D



REQUIREMENTS

Technical characteristics:

- Shell: steel tin plated
- Insulators: self-extinguishing thermoplastic, UL class 94V0
- Contacts: phosphor bronze, gold (for thickness see table)
- over 2µ mini nickel on active area and flash to 1.5µ maxi SnPb over
- 1µ mini nickel on termination
- Cycles: 200 min for plating 4
- 500 min for plating 6
- Gauge retention force: 0.20 N mini

Accessories:

Female screw lock with harpoon: tin plated, UNC 4.40  
retention against torque 0.70N.m minimum

Electrical characteristics:

- max. current rating: 5A
- Test voltage: 1000V
- Rated voltage: 300V
- Contact resistance: <10mΩ
- Shell resistance: <5mΩ
- Insulation resistance: >5000MΩ

Climatic characteristics:

Operating temperature range: -55°C +125°C

Dimensions:

in accordance with MIL-C-24308B and DIN41652

PART NUMBER	
flash gold	D50S90C4GV00
0.76µ gold	D50S90C6GV00

PCB HOLE DEFINITION		
-	ØA	ØB
DRILLED HOLE	Ø1.15±0.03	Ø3.22±0.03
COPPER PLATING	25µ mini	
TIN-LEAD PLATING	5µ mini	
FINISHED HOLE AFTER REFLOW	Ø0.94±1.09	Ø3.02±3.20



PC board drilling dimensions  
(after plating - thickness: 1.60 to 3.20 mm)

Part number	SEE TABLE
-------------	-----------

European Views

www.fciconnect.com		surface ISO 1302 ✓	tolerance std ISO 406 ISO 1101	projection mm	size A3	Scale 2
Dr JARRY 1994/07/05		TOLERANCES UNLESS OTHERWISE SPECIFIED		ANGULAR	ECN L506-0140	Spec ref -
Eng JARRY 1994/07/05		0.X ±0.1	0.XX ±0.1			
Chr LEGARE 1994/07/05		0.XX ±0.1	0.XXX ±0.1	Product family D-SUB		
Appr LEGARE 1994/07/05		Product family D-SUB				

rev	ecn no	dr	date
D	-	-	1996/07/24
E	L506-0140	LGO	2006/09/25
-	-	-	-
-	-	-	-
-	-	-	-
-	-	-	-

	<b>MALE CONNECTOR DELTA D STD EUROPE</b> STRAIGHT PRESS-FIT.	title C01-8646-0271	Rev. E
	catalog no -	Customer sheet 1 of 1	dwg no -

Copyright FCI.