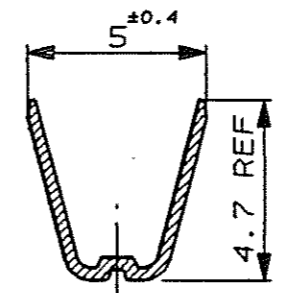
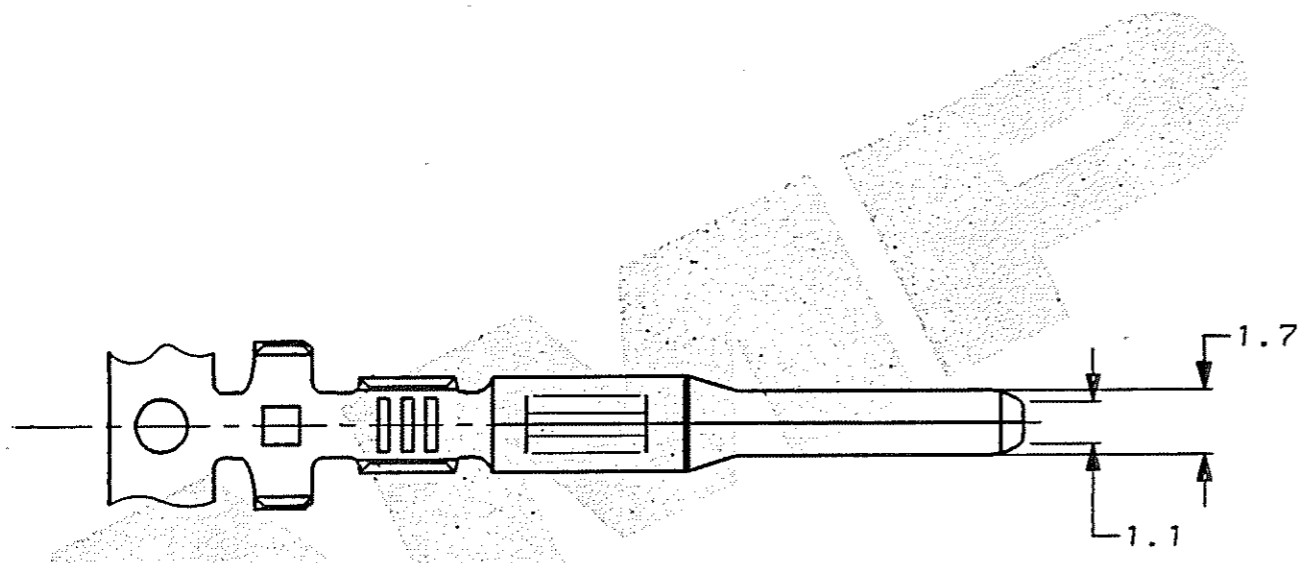
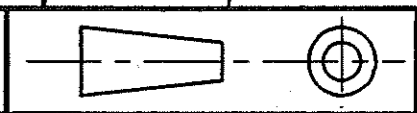


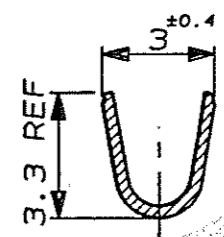
C.A.D. FILE CODE
C345263

DO NOT SCALE

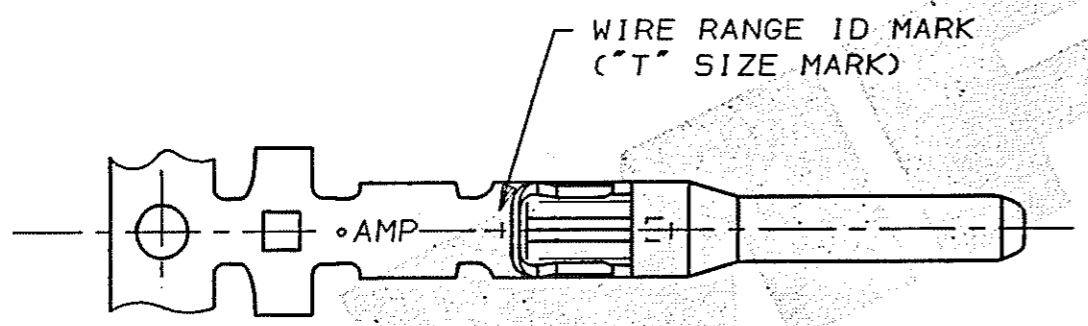
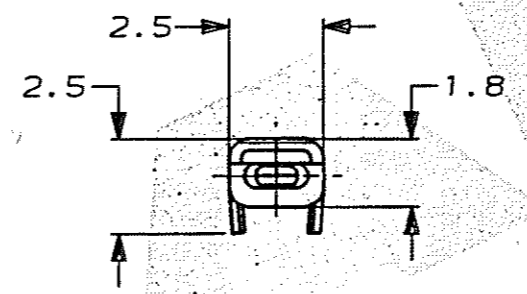
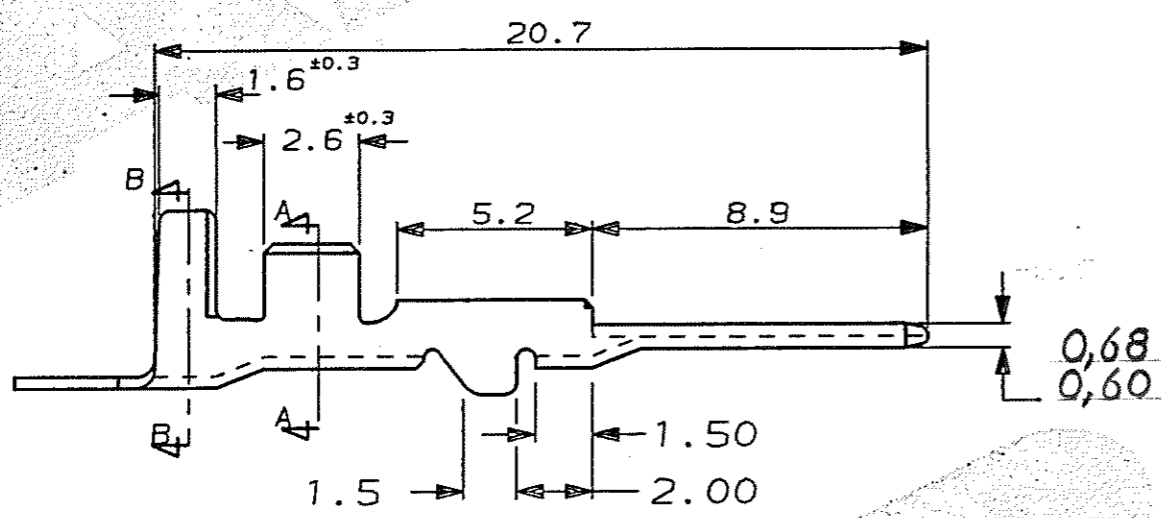
DIMENSIONS IN MM.



SECT B-B



SECT A-A



WIRE RANGE ID MARK
("T" SIZE MARK)

NOTE

- 1. WIRE DETAILS : 2.00mm² , 2.4-2.7 INS. DIA.
- 2. SIMILAR TO PART NUMBER 175191.

PRE-TIN		BRASS		345263-1	
FINISH		MATERIAL		PART NUMBER	
CUSTOMER DWG FOR REFERENCE ONLY		©COPYRIGHT 1991 BY AMP OF GREAT BRITAIN LTD. ALL INTERNATIONAL RIGHTS RESERVED. ALL PRODUCTS MAY BE COVERED BY BRITISH AND FOREIGN PATENTS AND/OR PATENTS PENDING.		RELEASED FOR PUBLICATION 15 OCT 1991	
-		TOLERANCES UNLESS OTHERWISE STATED :		DR. D.R. TERRY 16 OCT 1991	
-		DEC ± 0.5		CH. M MISTRY APP. M MISTRY	
-		ANGLES ± 1°		TE Connectivity	
-		NAME 0.70 SERIES TAB CONTACT, MULTI-LOCK			
E	BB	ECR-14 -007031	27MAY2014	SCALE 5/1	LOC E
REV	APPROVED	ECN	DATE	SIZE A3	DWG.No. C345263
				REV E	SHEET 1/1