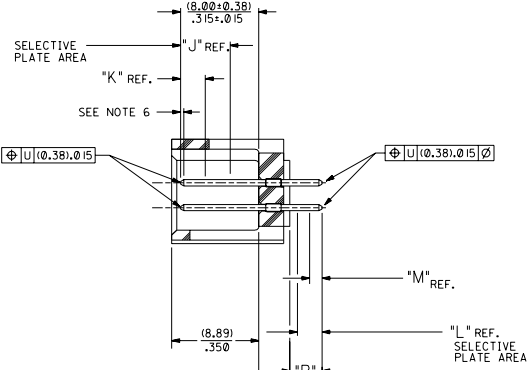


RECOMMENDED P.C. BOARD HOLE LAYOUT



SECTION J-J

NOTES:

- 1- 20 CIRCUIT SIZE SHOWN FOR ILLUSTRATION PURPOSES.
- 2- PIN PUSHOUT FORCE: (17.79 N)¼ LBS.
- 3- PINS MUST MEET SOLDERABILITY SPEC. MIL-STD-202 METHOD 208B.
- 4- WINDOW NOT AVAILABLE ON 6 AND 8 CIRCUIT SIZE.
- 5- FOR CHARTED DIMENSIONS AND ASSEMBLY NO.S NOT SHOWN ON THIS SHEET - SEE SHEET 2.
- 6- ROW TO ROW PIN HEIGHT VARIATION MUST NOT EXCEED (0.13)/.005 IN.
- 7- PRODUCT CONFORMS TO PS-8723.

MATERIAL:

SHROUDED WAFER: GLASS FILLED POLYESTER, 94V-0; COLOR: BLACK.
PINS: PHOSPHOR BRONZE,
SEE SHEET 2 FOR FINISHES.

ASSEMBLY STYLE "A" AND "B"

KRT.	DIM. "A"		DIM. "B"		DIM. "C"	DIM. "D"	DIM. "E"	8723				
	DIM. "A"	DIM. "B"	DIM. "C"	DIM. "D"								
06	(1.68) .066	(8.43) .332	(5.08) .200	(1.68) .066								
08	(1.68) .066	(10.97) .432	(7.62) .300	(1.68) .066								
10	(1.68) .066	(13.51) .532	(10.16) .400	(1.68) .066								
12	(1.68) .066	(16.05) .632	(12.70) .500	(1.68) .066								
14	(1.68) .066	(18.59) .732	(15.24) .600	(1.68) .066								
16	(1.68) .066	(21.13) .832	(17.78) .700	(1.68) .066								
18	(1.68) .066	(23.67) .932	(20.32) .800	(1.68) .066								
20	(1.68) .066	(26.21) 1.032	(22.86) .900	(1.68) .066								
22	(1.68) .066	(28.75) 1.132	(25.40) 1.000	(1.68) .066								
24	(1.68) .066	(31.29) 1.232	(27.94) 1.100	(1.68) .066								
26	(1.68) .066	(33.83) 1.332	(30.48) 1.200	(1.68) .066								
28	(1.68) .066	(36.37) 1.432	(33.02) 1.300	(1.68) .066								
30	(1.68) .066	(38.91) 1.532	(35.56) 1.400	(1.68) .066								
32	(1.68) .066	(41.45) 1.632	(38.10) 1.500	(1.68) .066								
34	(1.68) .066	(43.99) 1.732	(40.64) 1.600	(1.68) .066								
36	(1.68) .066	(46.53) 1.832	(43.18) 1.700	(1.68) .066								
38	(1.68) .066	(49.07) 1.932	(45.72) 1.800	(1.68) .066								
40	(1.68) .066	(51.61) 2.032	(48.26) 1.900	(1.68) .066								
42	(1.68) .066	(54.15) 2.132	(50.80) 2.000	(1.68) .066								
44	(1.68) .066	(56.69) 2.232	(53.34) 2.100	(1.68) .066								
46	(1.68) .066	(59.23) 2.332	(55.88) 2.200	(1.68) .066								
48	(1.68) .066	(61.77) 2.432	(58.42) 2.300	(1.68) .066								
50	(1.68) .066	(64.31) 2.532	(60.96) 2.400	(1.68) .066								
52	(1.68) .066	(66.85) 2.632	(63.50) 2.500	(1.68) .066								
54	(1.68) .066	(69.39) 2.732	(66.04) 2.600	(1.68) .066								
56	(1.68) .066	(71.93) 2.832	(68.58) 2.700	(1.68) .066								
58	(1.68) .066	(74.47) 2.932	(71.12) 2.800	(1.68) .066								
60	(1.68) .066	(77.01) 3.032	(73.66) 2.900	(1.68) .066								
62	(1.68) .066	(79.55) 3.132	(76.20) 3.000	(1.68) .066								
64	(1.68) .066	(82.09) 3.232	(78.74) 3.100	(1.68) .066								
66	(1.68) .066	(84.63) 3.332	(81.28) 3.200	(1.68) .066								
68	(1.68) .066	(87.17) 3.432	(83.82) 3.300	(1.68) .066								
70	(1.68) .066	(89.71) 3.532	(86.36) 3.400	(1.68) .066								
72	(1.68) .066	(92.25) 3.632	(88.90) 3.500	(1.68) .066								

U	ADD -3003 OPT DCP2004-2260 DMORGAN 04/05/20
T	LEAD FREE USP2004-1770 R WHITE 04/04/26
S	ADD -3002 OPTION EEN *PT2004-D02 DMORGAN 04/01/2
R2	TAB DIF DIM 6 CIR EEN *PDT 0999-0145 DMORGAN 58/09/01
R1	ADD WDG LATCH NOTE EEN *PDT 0998-0399 DMORGAN 58/06/23
R	ADDED SHEET 7 PER ECR NO US1008 03-23-96
O	REMOVE FOP NO.S PER ECR NO US0225 05-04-94
P	CHGD WINDOW NOTES PER ECR NO US30316 05-04-94
O	CHANGED MATERIAL PER ECR NO US0146 01-22-93
R2	REVISED A REDRAWN PER ECR NO US2073 05-28-92
L	REVISIONS

DIMS. SHOWN METRIC INCH		VS = 0	▽ = 0	REVISE ONLY ON CAD SYSTEM
SALES ASSEMBLY				
WAFER - STRAIGHT MT. FULLY SHROUDED				
.100 GRID - FOR USE WITH .025 SQ. PINS				
WITH .066 END WALLS				
MOLX INCORPORATED		SHEET NO.	DATE	
10000		1 OF 7	92/07/17	
SEE CHART		SDA-8723-*****		
DATE	BY	CHKD.	REV.	
	RB			
SCALE 4:1				

