

**MATERIALS AND FINISH:**

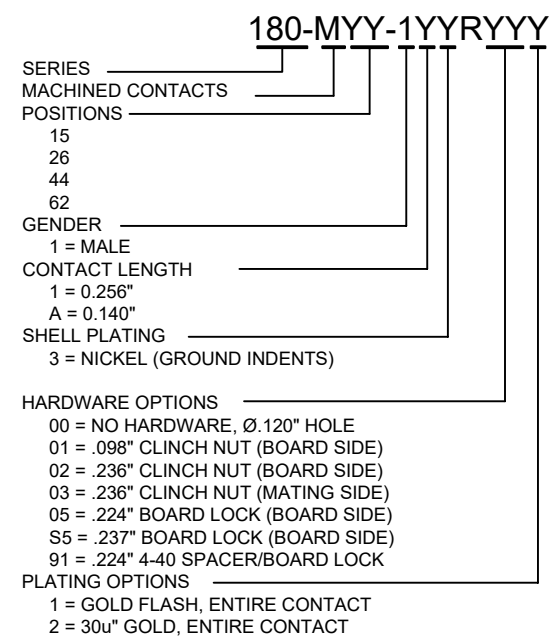
SHELL: STEEL MATERIAL, NICKEL FINISH  
 INSULATOR: (SEE DIM. CHART) = 260°C PROCESS TEMP, UL 94V-0 RATED, BLACK  
 CONTACT MATERIAL: BRASS  
 CONTACT FINISH: SEE PLATING PART NUMBER KEY BELOW

**ELECTRICAL:**

CONTACT CURRENT RATING: 3 AMPS  
 CONTACT RESISTANCE: 10 mOHMS Max.  
 DIELECTRIC WITHSTANDING VOLTAGE: 1,000VAC Min.  
 INSULATION RESISTANCE: 5 GOHMS Min.  
 TEMPERATURE RATING: -55° ~ +125° C

DIMENSIONS (in.)					
No. OF PINS	A	B	C	D	Insulator Material
15	0.665	0.984	1.213	0.090	PA9T
26	0.994	1.311	1.543	0.090	PA9T
44	1.533	1.852	2.089	0.090	PA9T
62	2.181	2.500	2.732	0.095	PA6T

DIMENSIONS (mm)					
No. OF PINS	A	B	C	D	Insulator Material
15	16.90	25.00	30.80	2.29	PA9T
26	25.25	33.30	39.20	2.29	PA9T
44	38.95	47.05	53.05	2.29	PA9T
62	55.40	63.50	69.40	2.41	PA6T



RoHS COMPLIANT

UNITS = inch [mm] DO NOT SCALE FROM DRAWING

**NC** THESE DRAWINGS AND SPECIFICATIONS ARE THE PROPERTY OF NorComp AND SHALL NOT BE REPRODUCED, COPIED OR USED AS THE BASIS FOR THE MANUFACTURE OR SALE OF APPARATUS WITHOUT WRITTEN PERMISSION.

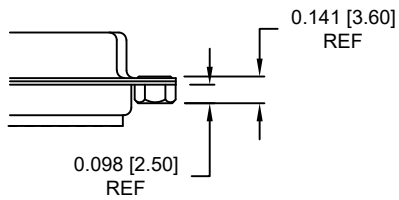
DRAWN: C. SMITH  
 DATE: 03/16/2007

**NorComp**

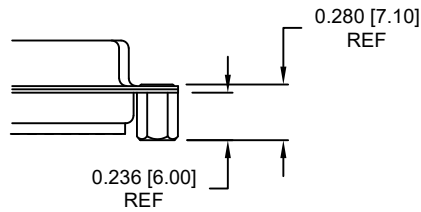
SCALE: NTS SHEET 1 OF 3 REV 23  
 DWG NO. 180-MYY-11YRYYY

ALL CLINCH-NUTS ARE 4-40 INTERNAL THREADS

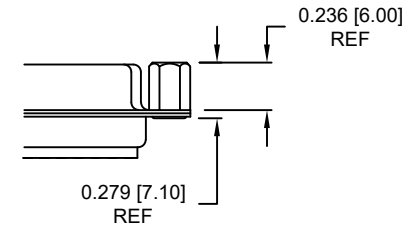
01 ..... 0.098" BOARD SIDE



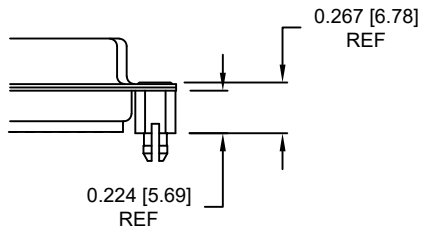
02 ..... 0.236" BOARD SIDE



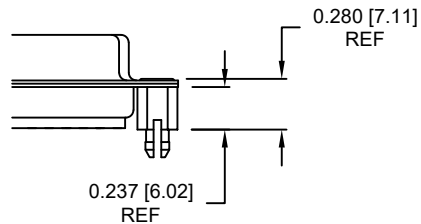
03..... 0.236" MATING SIDE



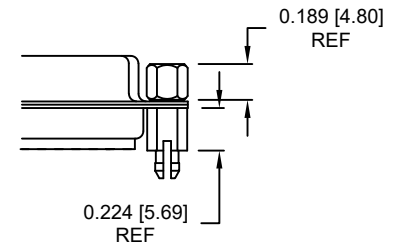
05 ..... 0.224" BOARD SIDE



S5 ..... 0.237" BOARD SIDE



91 ..... 0.224" BOARD SIDE  
0.189" MATING SIDE



NOTE: 4-40 FEMALE SCREW LOCK IS REMOVABLE

05, S5, AND 91 HARDWARE OPTIONS DESIGNED TO BE USED WITH STANDARD THICKNESS PCB (APPROX. 0.063")

RoHS COMPLIANT

UNITS = inch [mm]

DO NOT SCALE FROM DRAWING



THESE DRAWINGS AND SPECIFICATIONS ARE THE PROPERTY OF NorComp AND SHALL NOT BE REPRODUCED, COPIED OR USED AS THE BASIS FOR THE MANUFACTURE OR SALE OF APPARATUS WITHOUT WRITTEN PERMISSION.

DRAWN:

C. SMITH

DATE:

03/16/2007

NorComp

SCALE:

NTS

SHEET

OF

2

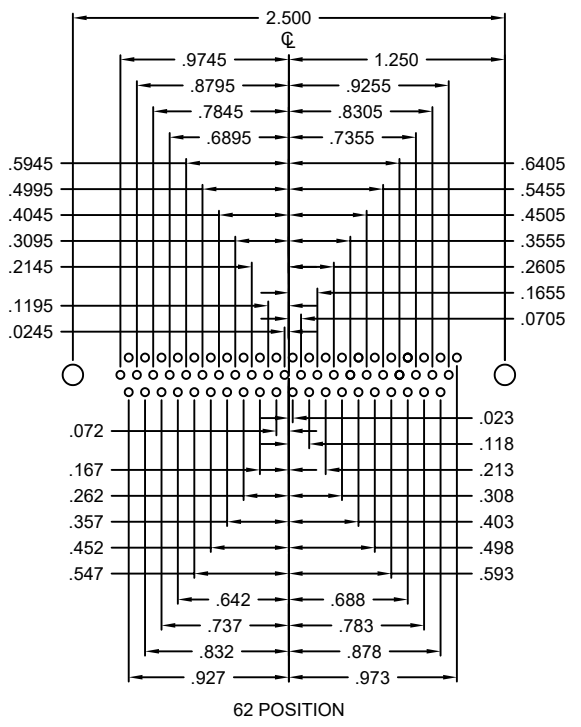
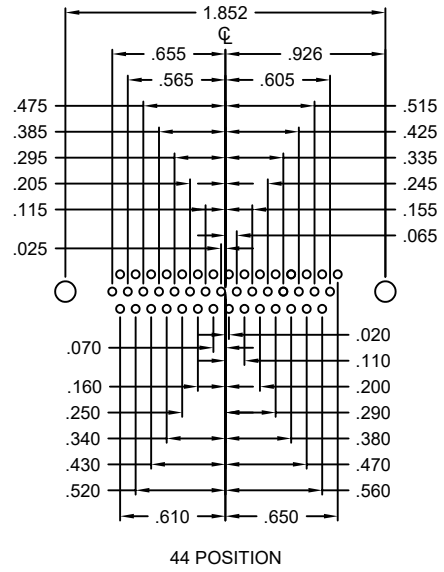
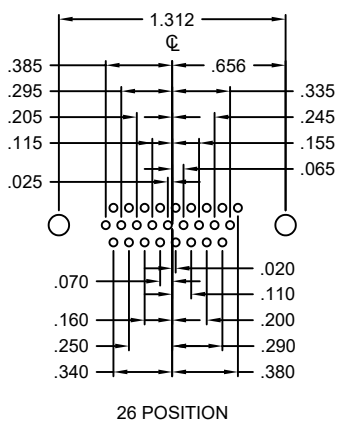
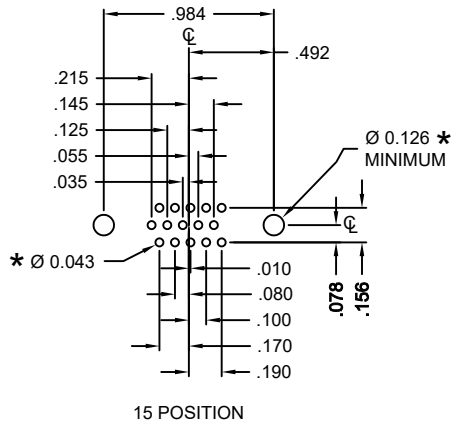
3

REV

23

DWG NO.

180-MYY-11YRYYY



HOLE PATTERN SHOWN ARE FOR MALE

\* TYP. SUGGESTED SIZE MAY NOT BE SUITABLE FOR ALL APPLICATIONS

RoHS COMPLIANT

UNITS = inch

DO NOT SCALE FROM DRAWING



THESE DRAWINGS AND SPECIFICATIONS ARE THE PROPERTY OF NorComp AND SHALL NOT BE REPRODUCED, COPIED OR USED AS THE BASIS FOR THE MANUFACTURE OR SALE OF APPARATUS WITHOUT WRITTEN PERMISSION.

DRAWN: C. SMITH  
DATE: 03/16/2007

NorComp

SCALE: NTS	SHEET 3 OF 3	REV 23
DWG NO. 180-MYY-11YRYYY		