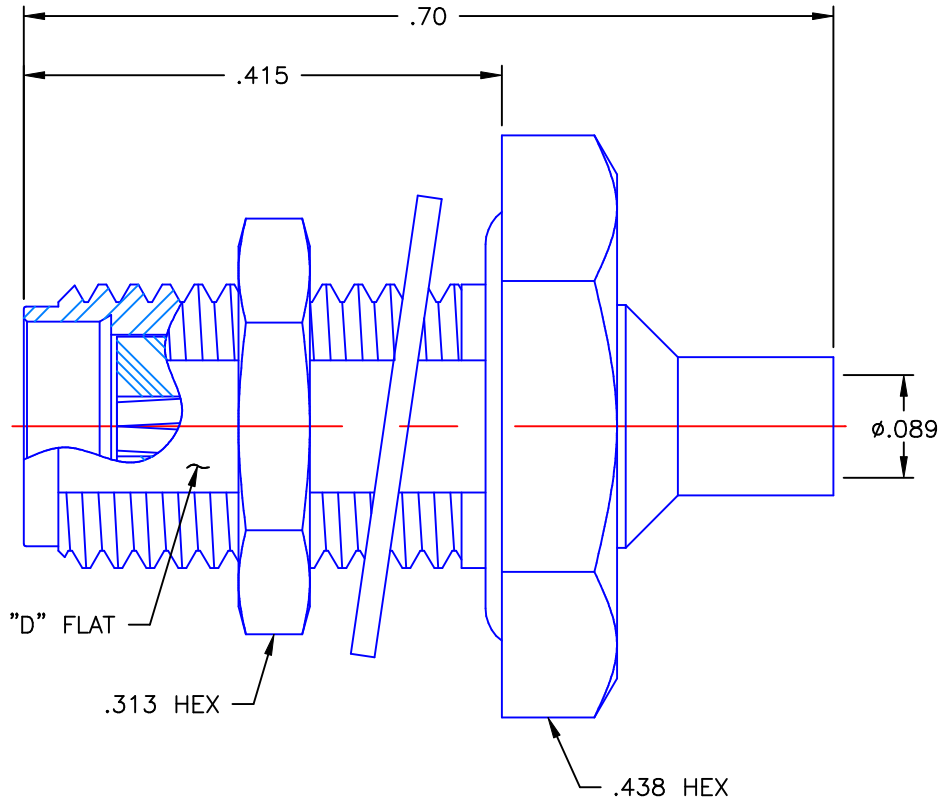


REVISIONS			
REV	DESCRIPTION	DATE	APPROVED
A	INITIAL RELEASE	11/23/10	A.D.M.




NOTES:

MATERIALS:

1. BODY & NUT = STAINLESS STEEL PER ASTM A582, ALLOY 303, CONDITION "A".
2. INSULATOR = VIRGIN WHITE TEFLON PER ASTM D1710, GRADE 1, TYPE I, CLASS "B".
3. CONTACT = BERYLLIUM COPPER PER ASTM B196, ALLOY C17300, TEMPER TD04.
4. LOCKWASHER = PHOSPHOR BRONZE PER ASTM B139, COPPER ALLOY C53400, TEMPER H04.
5. O-RING = SILICONE RUBBER PER ZZ-R-765, CLASS 2B, GRADE 65-75.

FINISHES:

1. CONTACT = GOLD PLATE PER MIL-G-45204, TYPE II, CLASS 1, GRADE C, OVER .00010 TO .00020 STRESS FREE SULFAMATE NICKEL PER QQ-N-290.
2. ALL OTHER METAL PARTS = NICKEL PLATE PER QQ-N-290, CLASS 1, GRADE G, EXCEPT .0001 TO .0002 THICK OVER .00005 TO .0001 THICK COPPER PER MIL-C-14550.

UNLESS OTHERWISE SPECIFIED DIMENSIONS ARE IN INCHES TOLERANCES ON		DWN: A.D.M.	DATE: 11/23/10	 Property of Radiall This document cannot be reproduced or communicated to a third party without prior written permission of RADIALL.
		CHKD: D.N.	DATE: 11/23/10	
DECIMAL	ANGLE	APVD: J.M.	DATE: 11/23/10	SMA STRAIGHT JACK BULKHEAD DIRECT SOLDER TYPE FOR .086 S/R & SIMILAR CABLES
REFERENCE:	MATERIALS & FINISHES:	SEE NOTES		
ORIGINATOR: A.D.M. DATE: 11/23/10		SIZE: A	FSCM NO.: 19505	DWG. NO.: 9453-7083-010
		SCALE: 6:1	THIRD ANGLE PROJECTION	REV: A
				SHEET 1 OF 1

9453-7083-010