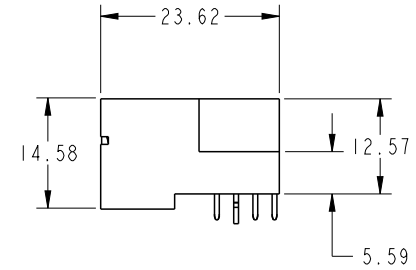
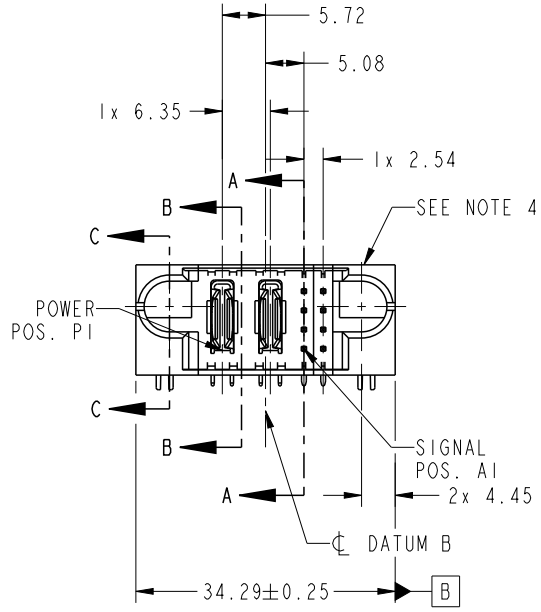


|                                   |                          |         |    |    |     |    |
|-----------------------------------|--------------------------|---------|----|----|-----|----|
| PRODUCT NO.<br>51722-10200800AALF | ROWS<br>D<br>C<br>B<br>A | POWER S |    |    |     |    |
|                                   |                          | E1      | P1 | P2 | 1 2 | E2 |

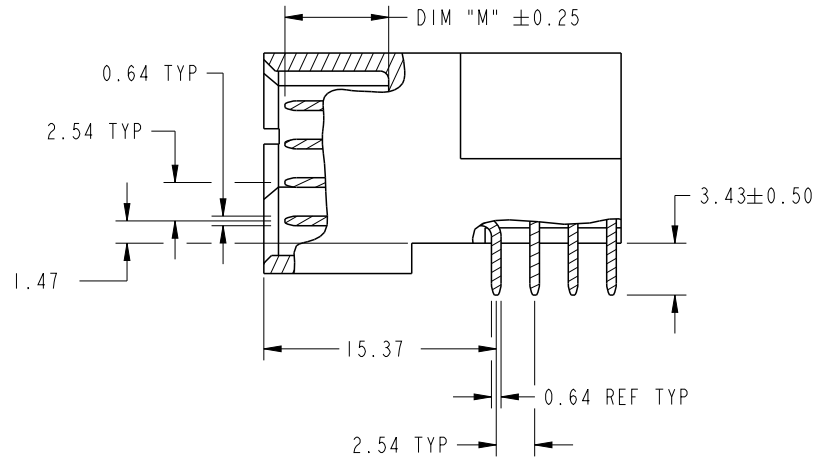


| CODE | DIM "M" MATING LENGTH | CONTACT TYPE |
|------|-----------------------|--------------|
| U    | [6.86]                | SIGNAL       |
| T    | [6.86]                | SIGNAL       |
| S    | [6.86]                | SIGNAL       |
| R    | [6.86]                | SIGNAL       |
| PA   | [N/A]                 | POWER        |
| HA   | [N/A]                 | HOLD-DOWN    |

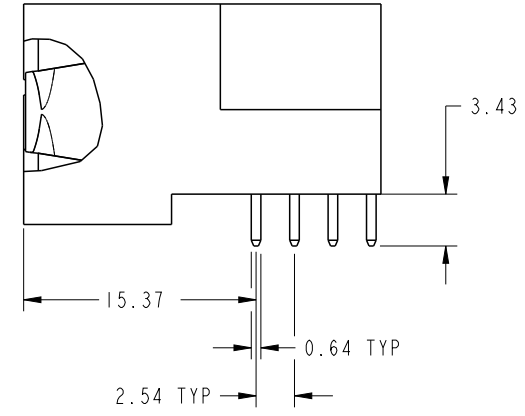
|                       |                                       |                     |                 |                                      |                         |                    |           |
|-----------------------|---------------------------------------|---------------------|-----------------|--------------------------------------|-------------------------|--------------------|-----------|
| spec ref See Notes    |                                       | dr Vicking Liu      | 2017/01/16      | projection<br>                       | MM<br>←→                | size A4            | scale 1:1 |
| tolerance std ISO 406 | TOLERANCES UNLESS OTHERWISE SPECIFIED | eng Vicking Liu     | 2017/01/19      |                                      |                         | ecn no -           |           |
| ISO 1101              |                                       | chr Fancy Zhang     | 2017/01/19      |                                      |                         | rel level Released |           |
| surface ISO 1302      | linear                                | 0.X ±0.5            | Amphenol<br>FCi | 2P + 8S<br>RIGHT ANGLE SOLDER HEADER | dwg no 51722-10200800AA | rev A              |           |
|                       |                                       | 0.XX ±0.25          |                 |                                      |                         |                    |           |
|                       | angular                               | 0° ±2°              |                 |                                      |                         |                    |           |
|                       |                                       | appr Pei-Ming Zheng | 2017/01/19      | product family PwrBlade              | sheet 1 of 4            |                    |           |

Creo File - REV E - 2016-02-12

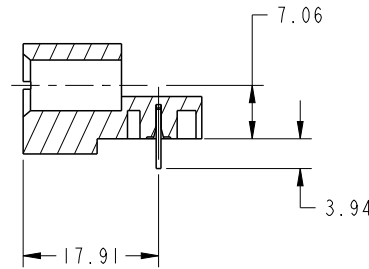
PRODUCT NUMBER  
51722-10200800AALF



BROKEN-OUT SECTION A-A  
SCALE 2:1



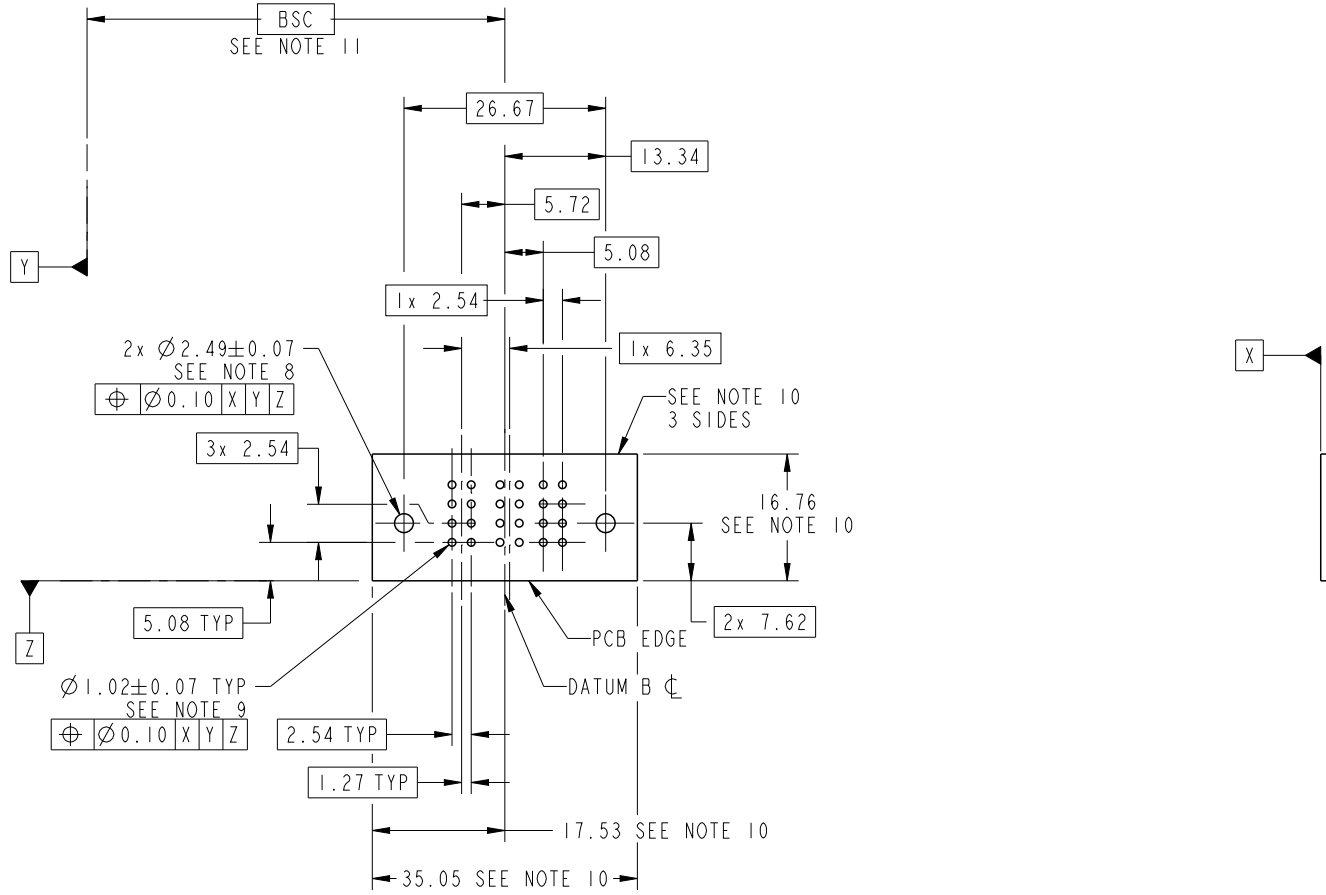
BROKEN-OUT SECTION B-B  
SCALE 2:1



SECTION C-C

|               |         |                                       |       |                 |                |                           |                |              |                        |          |       |              |
|---------------|---------|---------------------------------------|-------|-----------------|----------------|---------------------------|----------------|--------------|------------------------|----------|-------|--------------|
| spec ref      |         | See Notes                             |       | dr              | Vicking Liu    | 2017/01/16                | projection<br> | MM<br>←————→ | size                   | A4       | scale | 1:1          |
| tolerance std |         | TOLERANCES UNLESS OTHERWISE SPECIFIED |       | eng             | Vicking Liu    | 2017/01/19                |                |              | ecn no                 | -        |       |              |
| ISO 406       |         |                                       |       | chr             | Fancy Zhang    | 2017/01/19                |                |              |                        |          |       |              |
| ISO 1101      |         |                                       |       | appr            | Pei-Ming Zheng | 2017/01/19                | product family | PwrBlade     | rel level              | Released |       |              |
| surface       | linear  | 0.X                                   | ±0.5  | Amphenol<br>FCi | title          | 2P + 8S                   |                | dwg no       | 51722-10200800AA       |          | rev   | A            |
|               |         | 0.XX                                  | ±0.25 |                 |                | RIGHT ANGLE SOLDER HEADER |                |              |                        |          |       |              |
| ISO 1302      | angular | 0°                                    | ±2°   |                 |                | cat. no.                  | -              |              | Product - Customer Drw |          |       | sheet 2 of 4 |

PRODUCT NUMBER  
51722-10200800AALF



RECOMMENDED PCB LAYOUT

|               |  |                                       |      |       |                 |                           |                |                        |           |                  |       |     |   |
|---------------|--|---------------------------------------|------|-------|-----------------|---------------------------|----------------|------------------------|-----------|------------------|-------|-----|---|
| spec ref      |  | See Notes                             |      | dr    | Vicking Liu     | 2017/01/16                | projection<br> | MM<br>←————→           | size      | A4               | scale | 1:1 |   |
| tolerance std |  | TOLERANCES UNLESS OTHERWISE SPECIFIED |      | eng   | Vicking Liu     | 2017/01/19                |                |                        | ecn no    | -                |       |     |   |
| ISO 406       |  |                                       |      | chr   | Fancy Zhang     | 2017/01/19                |                |                        |           |                  |       |     |   |
| ISO 1101      |  |                                       |      | appr  | Pei-Ming Zheng  | 2017/01/19                | product family | PwrBlade               | rel level | Released         |       |     |   |
| surface       |  | linear                                | 0.X  | ±0.5  | Amphenol<br>FCi | part no                   |                | 2P + 8S                | dwg no    | 51722-10200800AA |       | rev | A |
|               |  |                                       | 0.XX | ±0.25 |                 | RIGHT ANGLE SOLDER HEADER |                |                        |           |                  |       |     |   |
| ISO 1302      |  | angular                               | 0°   | ±2°   |                 | cat. no.                  | -              | Product - Customer Drw |           | sheet 3 of 4     |       |     |   |

PRODUCT NUMBER  
51722-10200800AALF

NOTES:

1. THIS PRODUCT MEETS EUROPEAN UNION DIRECTIVES AND OTHER COUNTRY REGULATIONS AS DESCRIBED IN GS-47-0004.
2. MATERIAL:  
HOUSING: HIGH-TEMP THERMOPLASTIC WITH GLASS FILLED, UL 94 V-0, BLACK.  
POWER CONTACT: HIGH CONDUCTIVITY COPPER ALLOY.  
SIGNAL CONTACT: COPPER ALLOY.
3. PLATING SPECIFICATION : 10064183.
4. MANUFACTURER'S NAME, DATE CODE AND OPTIONAL P/N TO BE MARKED ON THIS SURFACE. THE MARK CAN BE OMITTED IF THERE IS NOT ENOUGH SPACE ON THIS SURFACE.
5. PRODUCT SPECIFICATION : GS-12-149.  
APPLICATION SPECIFICATION : BUS-20-067.  
PRODUCT PACKAGE SPECIFICATION: BUS-14-437.
6. PACKAGED IN TRAYS.
7. ALL HOLE DIAMETERS ARE FINISHED HOLE SIZE.
8. MOUNTING HOLES, WHERE APPLICABLE, ARE UNPLATED.
9.  $\varnothing 1.15 \pm 0.025$ MM DRILLED HOLE PLATED WITH 0.00762MM MIN SN OVER 0.0254-0.0762MM CU PLATING TO ACHIEVE A 1.02  $\pm 0.07$ MM HOLE.
10. DENOTES CONNECTOR KEEP OUT ZONE.
11. DATUM AND BASIC DIMENSIONS ARE ESTABLISHED BY CUSTOMER.
12. THE HOUSING WILL WITHSTAND EXPOSURE TO 260 °C PEAK TEMPERATURE FOR 10 SECONDS IN A WAVE SOLDER APPLICATION.

|               |         |                                       |               |                 |                |                                      |                |              |                  |          |       |     |
|---------------|---------|---------------------------------------|---------------|-----------------|----------------|--------------------------------------|----------------|--------------|------------------|----------|-------|-----|
| spec ref      |         | See Notes                             |               | dr              | Vicking Liu    | 2017/01/16                           | projection<br> | MM<br>       | size             | A4       | scale | 1:1 |
| tolerance std |         | TOLERANCES UNLESS OTHERWISE SPECIFIED |               | eng             | Vicking Liu    | 2017/01/19                           |                |              | ecn no           | -        |       |     |
| ISO 406       |         |                                       |               | chr             | Fancy Zhang    | 2017/01/19                           |                |              |                  |          |       |     |
| ISO 1101      |         |                                       |               | appr            | Pei-Ming Zheng | 2017/01/19                           | product family | PwrBlade     | rel level        | Released |       |     |
| surface       | linear  | 0.X                                   | $\pm 0.5$     | Amphenol<br>FCi | title          | 2P + 8S<br>RIGHT ANGLE SOLDER HEADER |                | dwg no       | 51722-10200800AA |          | rev   | A   |
|               |         | 0.XX                                  | $\pm 0.25$    |                 |                |                                      |                |              |                  |          |       |     |
|               |         | 0.XXX                                 | $\pm 0.1$     |                 |                |                                      |                |              |                  |          |       |     |
| ISO 1302      | angular | 0°                                    | $\pm 2^\circ$ | cat. no.        | -              | Product - Customer Drw               |                | sheet 4 of 4 |                  |          |       |     |