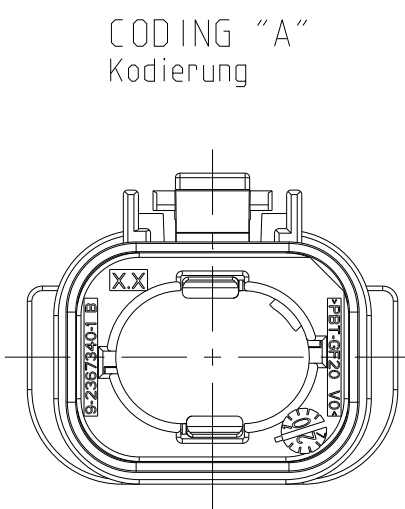
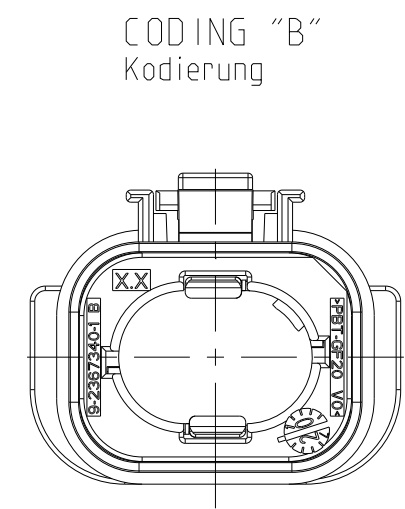


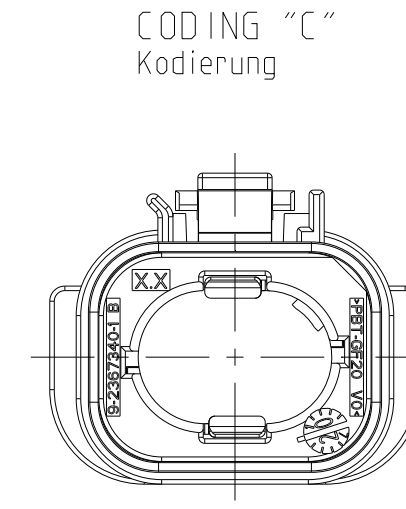
REVISIONS				
P	LTR	DESCRIPTION	DATE	APVD
D1		seal colour changed	08JUN2022	GM JB
E		RELEASE PER ECN-22-167703	02AUG2022	DFS DFS
F		SEE ECN-23-198079	20FEB2023	TH DS
G		See ECN-23-219229	30Jun2023	VP VP



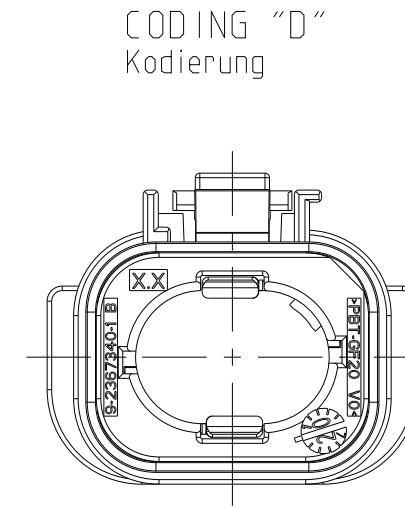
PN: 9-2367337-1



PN: 9-2367337-2

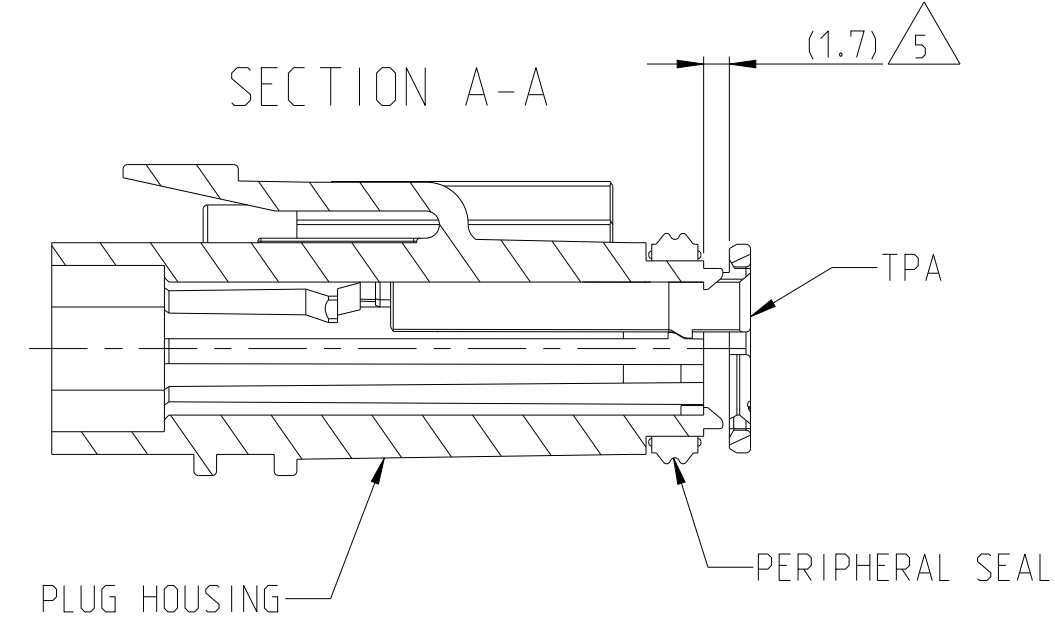
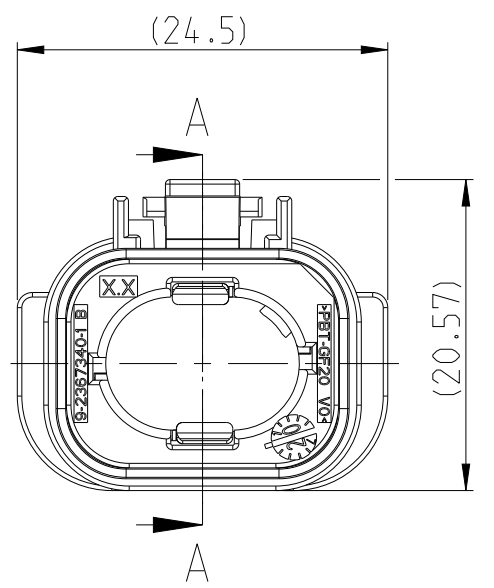
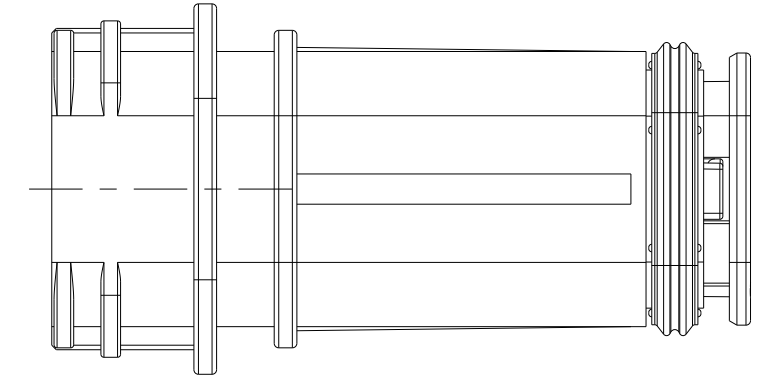
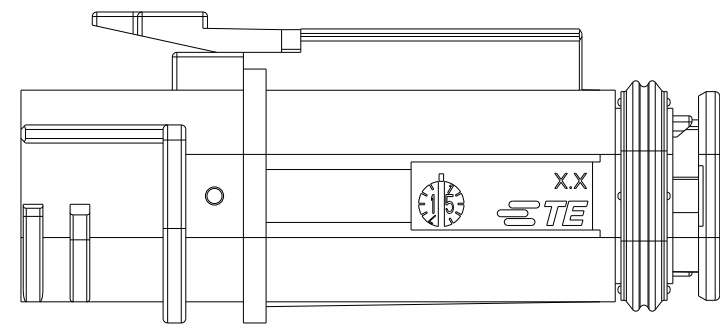
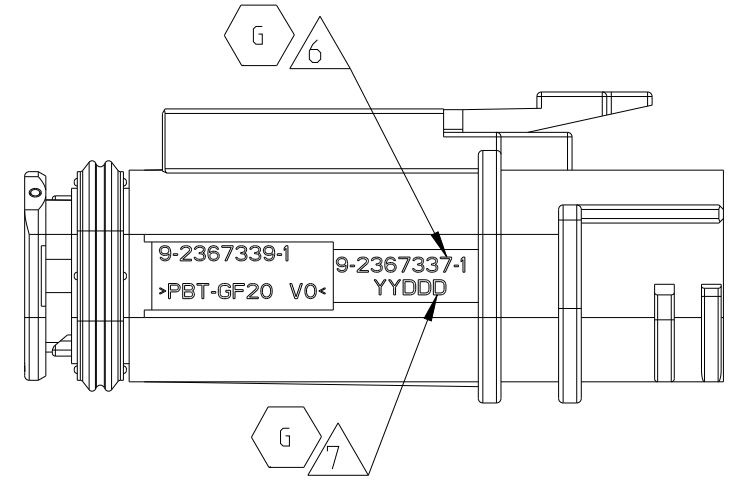


PN: 9-2367337-3



PN: 9-2367337-4

DELIVERY CONDITION:
TPA IN PRE-LOCKED POSITION
Lieferzustand:
TPA in Vorraststellung



NOTES:

1. MATERIALS:

PLUG HOUSING:
GENERIC TYPE: PBT GF20 / V0
COLOR: SEE TABLE

PERIPHERAL SEAL:
GENERIC TYPE: SILICONE RUBBER
COLOR: LIGHT BLUE

TPA:
GENERIC TYPE: PBT GF20 / V0
COLOR: BLACK

2. SUITABLE COUNTERPART SEE DRAWING 2367341 / 2367359

3. MATED WITH COVER 2367344

4. SUITABLE WIRE SEAL: 2367346

TPA PRE-LOCK POSITION

LASER MARK TE PART NUMBER USING 2.5 mm HIGH CHARACTERS IN APPROXIMATE LOCATION SHOWN.

LASER MARK MANUFACTURING DATE CODE IN "YYDDD" JULIAN FORMAT USING 2.5 mm HIGH CHARACTERS IN APPROXIMATE LOCATION SHOWN.
YY: TWO DIGIT YEAR
DDD: THREE DIGIT DAY OF THE YEAR

2373314-1 SHOWN

HOUSING COLOR	CODE	TE ORDER NUMBER
BLUE	D	9-2367337-4
GREEN	C	9-2367337-3
GREY	B	9-2367337-2
BLACK	A	9-2367337-1

THIS DRAWING IS A CONTROLLED DOCUMENT.

DWN	K. Schang	26MAR2020
CHK	S. Helm	27MAR2020
APVD	J. Barth	27MAR2020

TE Connectivity

NAME: DT Highspeed Plug Assembly
DT Highspeed Buchse Baugruppe

PRODUCT SPEC: 108-94825
APPLICATION SPEC: 114-94706

WEIGHT: 7.9 g

CUSTOMER DRAWING

SCALE: 2:1 SHEET 1 OF 1 REV G