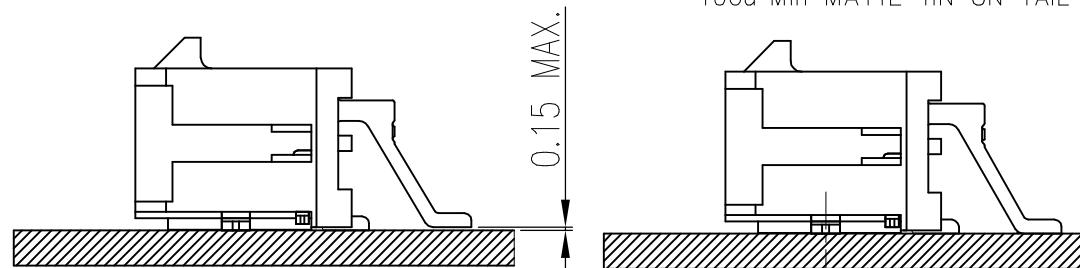
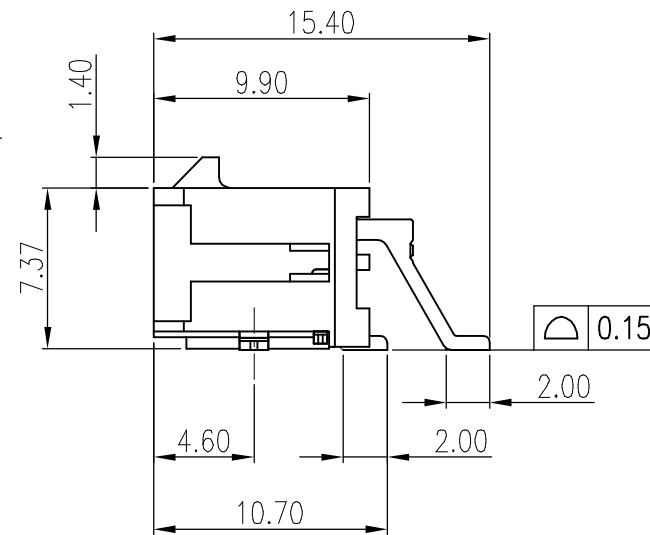
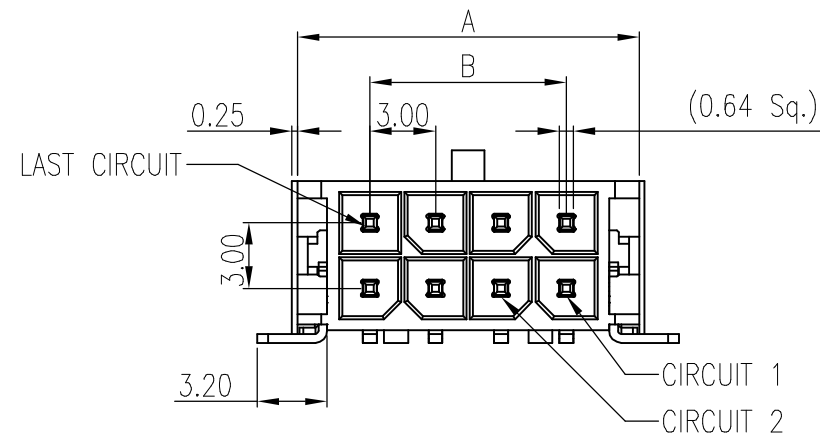
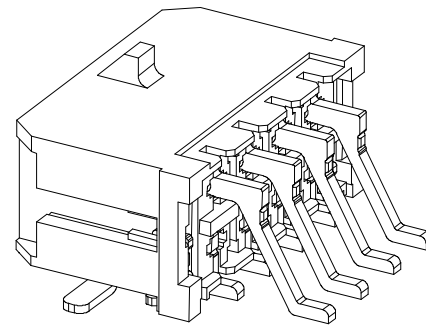
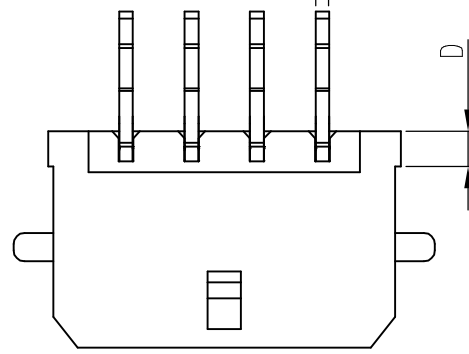


PRODUCT NUMBER

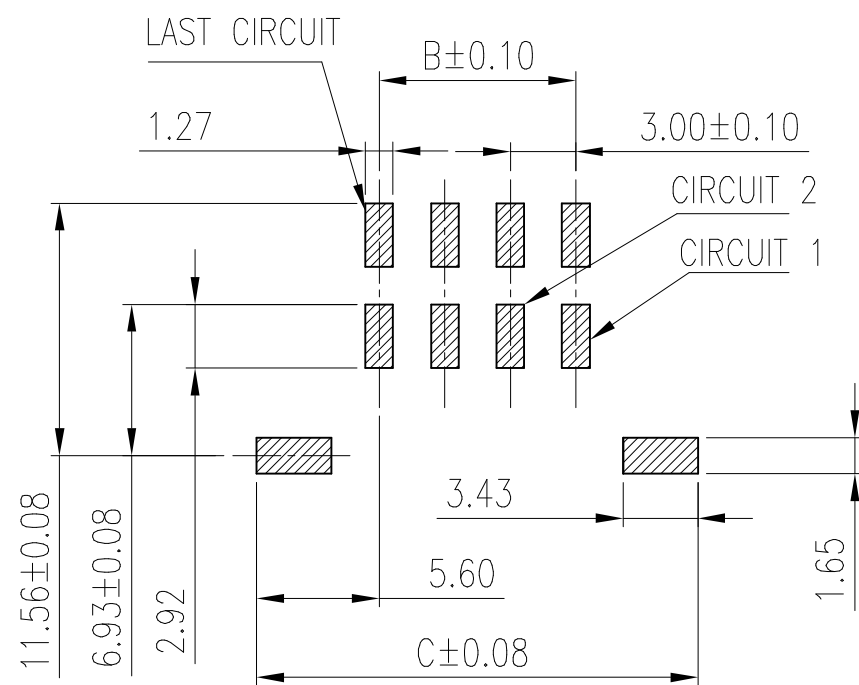
SEE P/N SCHEME

(0.64 TYP)



COPLANARITY DETAIL  
(SEE NOTE #8)

LOCATION DETAIL  
(SEE NOTE #9)



RECOMMENDED PCB LAYOUT  
GENERAL TOLERANCE: ±0.05

NOTE:

- MATERIAL:  
HOUSING: LCP, UL94V-0, HALOGEN FREE, COLOR: BLACK  
CONTACT: COPPER ALLOY.  
HOLD DOWN: COPPER ALLOY
- CONTACT FINISH: NICKEL 50u" Min. UNDERPLATED OVERALL.  
OPTIONAL PLATING ON CONTACT AREA, 100u" MIN MATTE TIN ON SOLDER TAIL.  
HOLD DOWN: 100u" MIN MATTE TIN OVER 50u" Min. NICKEL
- REFER GS-20-0399 APPLICATION SPECIFICATION FOR MATING CONNECTOR.
- PRODUCT SPECIFICATION: GS-12-1177.
- TAPE & REEL PACKAGE SPECIFICATION: GS-14-2359.
- APPLICATION SPECIFICATION: GS-20-0399
- THE HOUSING WILL WITHSTAND EXPOSURE TO 260°C PEAK TEMPERATURE FOR 10 SECONDS IN A REFLOW OVEN.
- THE COPLANARITY DIMENSION IS ESTABLISHED BY PLACING THE ASSEMBLY ON A FLAT SURFACE. THE DISTANCE FROM THAT SURFACE TO THE BOTTOM OF ANY TERMINAL OR NAIL MUST NOT EXCEED 0.15mm.
- TO AVOID INTERFERENCE BETWEEN RECEPTACLE AND PCB, HEADER MUST BE PLACED WITHIN 10.16mm MAX. FROM EDGE OF PCB, AS SHOWN IN LOCATION DETAIL.
- LEAD FREE PRODUCTS MEET EUROPEAN UNION DIRECTIVES AND OTHER COUNTRY REGULATIONS AS DESCRIBED IN GS-47-0004
- PART NUMBER SCHEME:

10137924- XX X X X LF  
LEAD FREE

POS. CODE:  
02: 2 POS  
04: 4 POS  
24: 24 POS

PACKAGING OPTION:  
BLANK: TAPE & REEL  
Q: CUSTOMER SPECIAL TAPE & REEL

GLOW WIRE COMPATIBLE:  
1: COMPATIBLE  
2: NON-COMPATIBLE

- PLATING CODE:
- 100u" Min. MATTE TIN OVERALL
  - GOLD FLASH ON CONTACT AREA, 100u" Min MATTE TIN ON TAIL
  - 15u" Min Au ON CONTACT AREA, 100u" Min MATTE TIN ON TAIL
  - 30u" Min Au ON CONTACT AREA, 100u" Min MATTE TIN ON TAIL

P/N & DIMENSION TABLE

PART NO.	POS	A	B	C	D
10137924-02XXXLF	02	6.65	NA	11.20	6.74
10137924-04XXXLF	04	9.65	3.00	14.20	
10137924-06XXXLF	06	12.65	6.00	17.20	
10137924-08XXXLF	08	15.65	9.00	20.20	1.60
10137924-10XXXLF	10	18.65	12.00	23.20	
10137924-12XXXLF	12	21.65	15.00	26.20	
10137924-14XXXLF	14	24.65	18.00	29.20	
10137924-16XXXLF	16	27.65	21.00	32.20	
10137924-18XXXLF	18	30.65	24.00	35.20	
10137924-20XXXLF	20	33.65	27.00	38.20	
10137924-22XXXLF	22	36.65	30.00	41.20	
10137924-24XXXLF	24	39.65	33.00	44.20	

mat'l. code		surface ISO 1302 ✓		tolerance ISO 406 ISO 1101		projection mm		product family MINITEK PWR3.0	
ltr ecn no dr date		tolerances unless otherwise specified		angles linear		scale N.T.S		title MINITEK PWR 3.0 R/A HEADER, DUAL ROW SMT TAIL & HOLD DOWN	
A		TAI	2015-11-30	0°±2'				dwg no sheet 1 of 2 size	
B	ELX-N-24982	TAI	2016-09-21					10137924 A3	
C	ELX-N-26477	TONY	2017-03-27					type Product Customer Drawing	
D	ELX-N-29860	TONY	2018-04-16	dr	KENNY TAI	2015-11-26			
E	ELX-I-43460	AKHIL	2022-01-21	engr	AKHIL RAJAN	2022-01-21			
				chr	MITHUN PAUL	2022-01-21			
				appd	SPK	2022-01-21			
sheet index	revision sheet	E	E						
		1	2						



© 2016 AFCI



Amphenol  
FCi

© 2016 AFCI

D

1

2 3

4

5

6

A

B

C

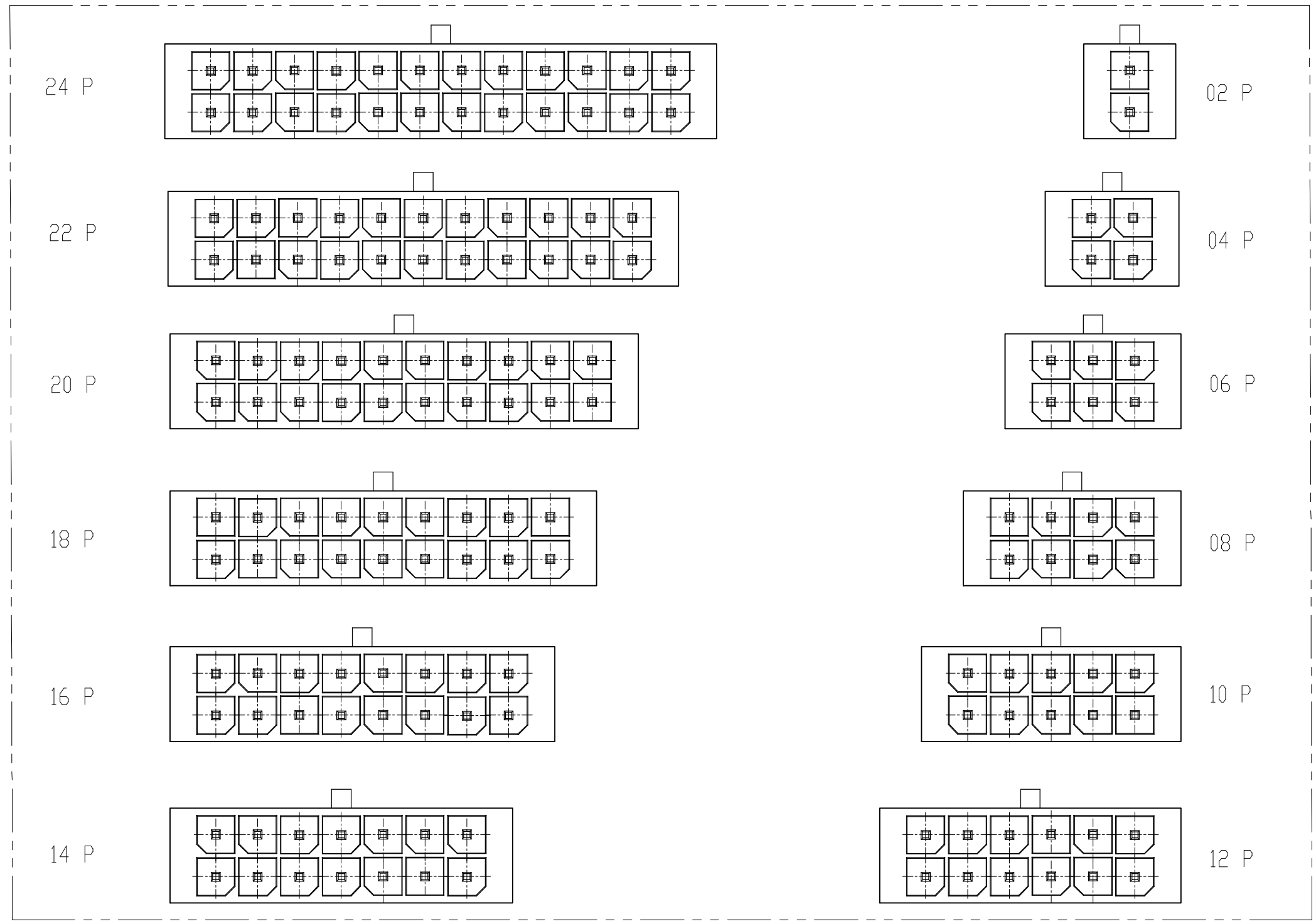
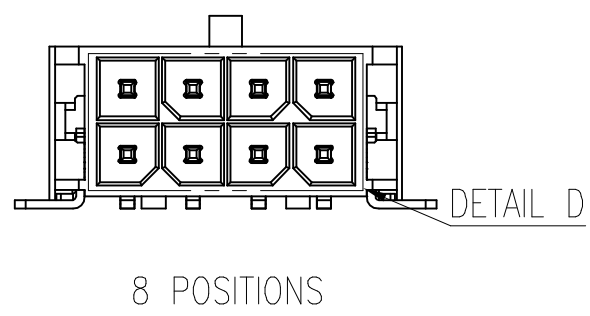
D

A

B

C

D



DETAIL D

mat'l. code		surface		tolerance		projection		product family	
		ISO 1302 ✓		ISO 406 ISO 1101				MINITEK PWR3.0	
ltr	ecn no	dr	date	tolerances unless otherwise specified		mm		title	
				angles	linear	← mm →		MINITEK PWR 3.0 R/A HEADER, DUAL ROW SMT TAIL & HOLD DOWN	
				0°±2'		scale N.T.S		dwg no sheet 2 of 2 size	
				dr	KENNY TAI	2015-11-26		10137924 A3	
				enr	AKHIL RAJAN	2022-01-21		type Product Customer Drawing	
				chr	MITHUN PAUL	2022-01-21			
				app	SPK	2022-01-21			
sheet index	revision sheet	E	E						
		1	2						

1

2

3

6