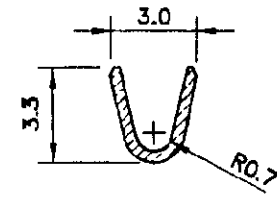
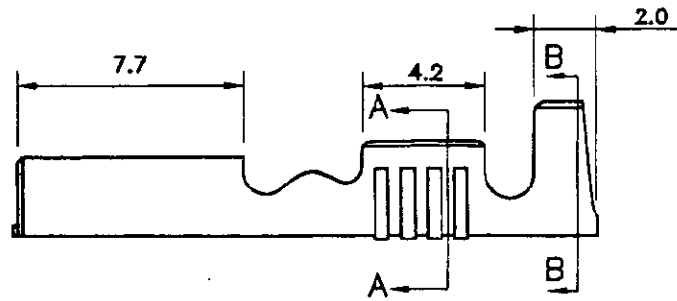
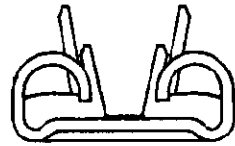
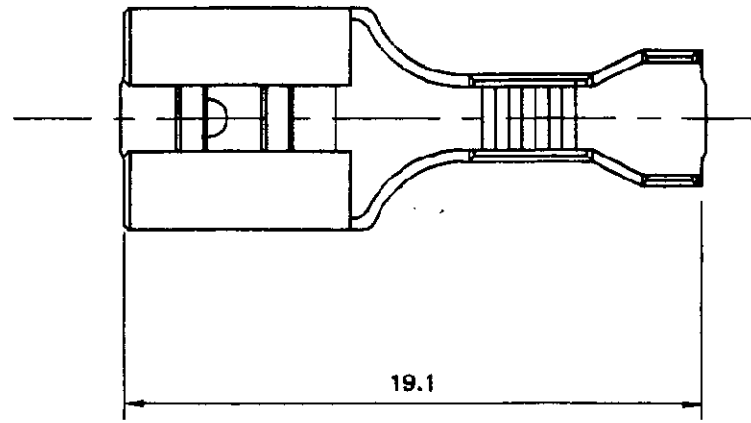
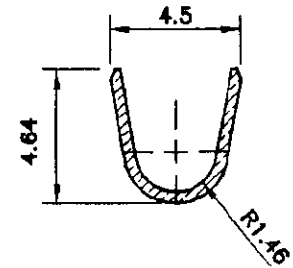


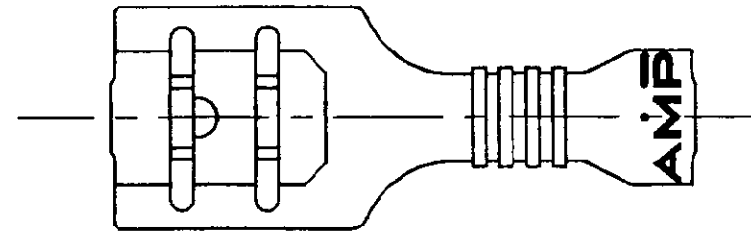
DRAWING MADE IN THIRD ANGLE PROJECTION



SECTION A-A




SECTION B-B



NOTE 1:
THE FIRST INSERTION SHALL NOT BE MORE THAN 55N
2:
ALL OTHER SPECIFICATIONS ARE IN COMPLIANCE TO AS3169.

CONTROLLED

THIS INFORMATION IS CONFIDENTIAL AND DISCLOSED TO YOU ON CONDITION THAT NO FURTHER DISCLOSURE IS MADE BY YOU TO OTHER THAN AMP PERSONNEL WITHOUT WRITTEN AUTHORIZATION FROM AUSTRALIAN AMP

WIRE RANGE: 0.5-1.5 sq mm		-	-	NICKEL SILVER	190670-2
INSULATION RANGE: ϕ 2.29-3.3 mm		REMARKS	FINISH	MATERIAL	PART No
		SIZE 0.4 \pm 0.013x19.3 \pm 0.05			
		DATE 20/04/94	CHK FP	 Australian AMP Pty. Limited Nelson Avenue, CASTLE HILL NSW	
		DR RB	APP BL		
		NAME RECEPTACLE, FASTON, 0.250			
		SCALE AS 4:1 or SHOWN	SIZE A3	DWG No. C-190670	LOC CODE U
		REVISION RECORD	APP DATE	SHEET 1 OF 1	REV B

CUSTOMER DRAWING

ORIGINAL

8

7

6

5

4

3

2

1

F

E

D

C

B

A