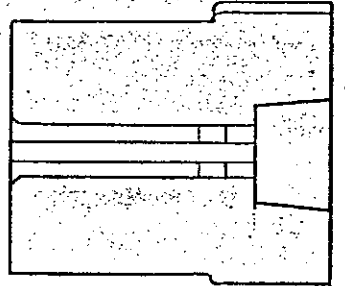
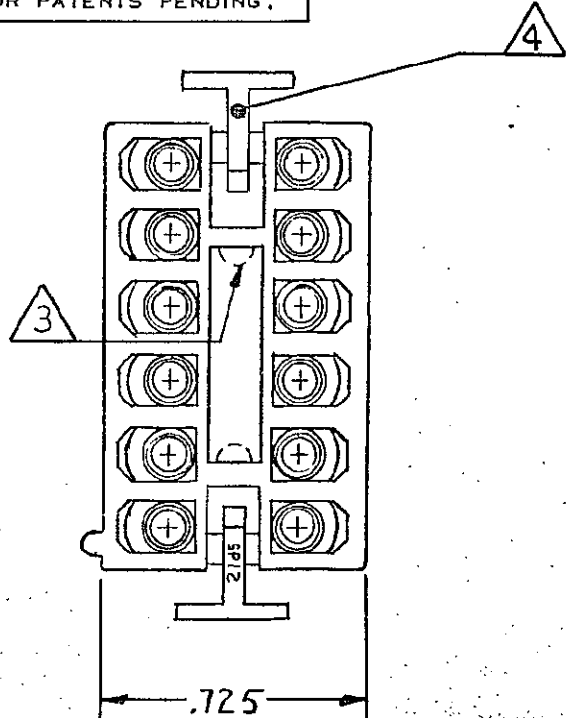
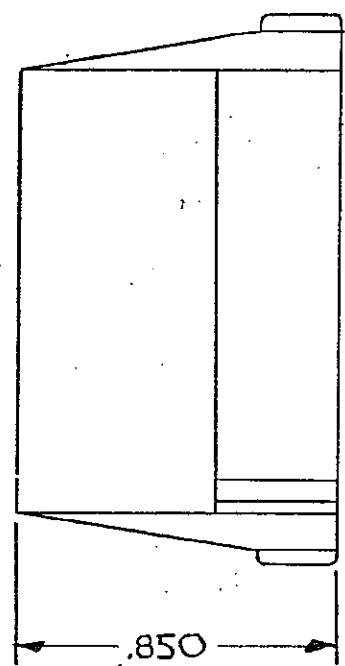
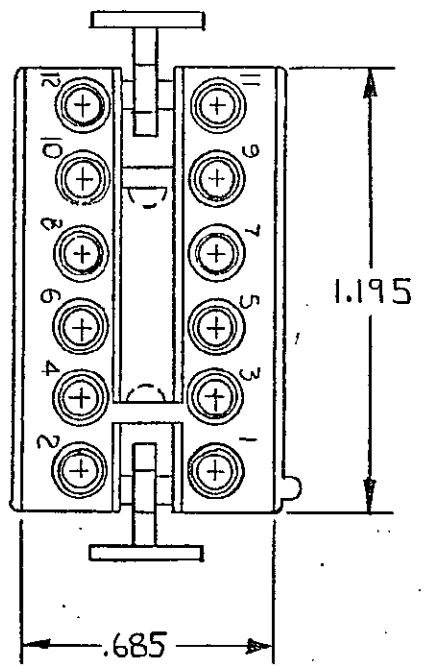


THIS DRAWING IS UNPUBLISHED. RELEASED FOR PUBLICATION JULY 23, 1981.

© COPYRIGHT 1964 BY AMP INCORPORATED, HARRISBURG, PA. ALL INTERNATIONAL RIGHTS RESERVED. AMP PRODUCTS MAY BE COVERED BY U.S. AND FOREIGN PATENTS AND/OR PATENTS PENDING.



		REVISIONS				
P	F	ZONE	LTR	DESCRIPTION	DATE	APPROVED
✓	✓		P	REDRAWN W/O CHG. M-7019	7-1-82	CH
✓			PI	RESTORATION	5-9-85	JS/SS
✓			R	OBSOLETE 1-1, 1-3/1-8, 2-0	7/9/86	RS
				3-0 (SH 2) PER CM-473		RS
✓			S	OBSOLETE 1-9 PER CM-895	6-17-87	PKC TB
✓			T	REVISE PER CM-1440	1-7-88	PKC RS
			U	OBS-12 PER EC 0730-0129-96	6-25-97	JH RS

- 1. MATES WITH HOUSING 480288.
- 2. SEE SHEET 2 FOR INK STAMPED HOUSINGS.
- 3 THIS NON-FUNCTIONAL FEATURE MAY OR MAY NOT APPEAR AT AMP'S DISCRETION.
- 4 AMP LOGO ON THIS SURFACE

NATURAL	1-480287-0
COLOR	PART NO

UNLESS OTHERWISE SPECIFIED DIMENSIONS ARE IN INCHES. TOLERANCES ON: DECIMALS ±.015 ANGLES ±	CONTRACT NO		AMP INCORPORATED Harrisburg, Pa.	
	DR	<i>m. Feber 7-23-81</i>		
	CHK	<i>D.S. Heide 7/1/82</i>	NAME PLUG, MOTOR MOUNT, COMMERCIAL MATE-N-LOK, 12 CIRCUIT	
	APPD	<i>APD 7/1/82</i>	SIZE B	FSCM NO 00779
MATERIAL NYLON 94V-2	DSGN APPD	SCALE 2-1	SHEET 1 OF 1	
COLOR SEE TABLE	OTHER APPD			