

THIS DRAWING IS UNPUBLISHED. RELEASED FOR PUBLICATION
 © COPYRIGHT - BY TYCO ELECTRONICS CORPORATION. ALL RIGHTS RESERVED.

LOC		DIST		REVISIONS			
P	LTR	DESCRIPTION		DATE	DWN	APVD	
	W2	REVISED PER ECO-06-018765		13APR07	DH	DB	

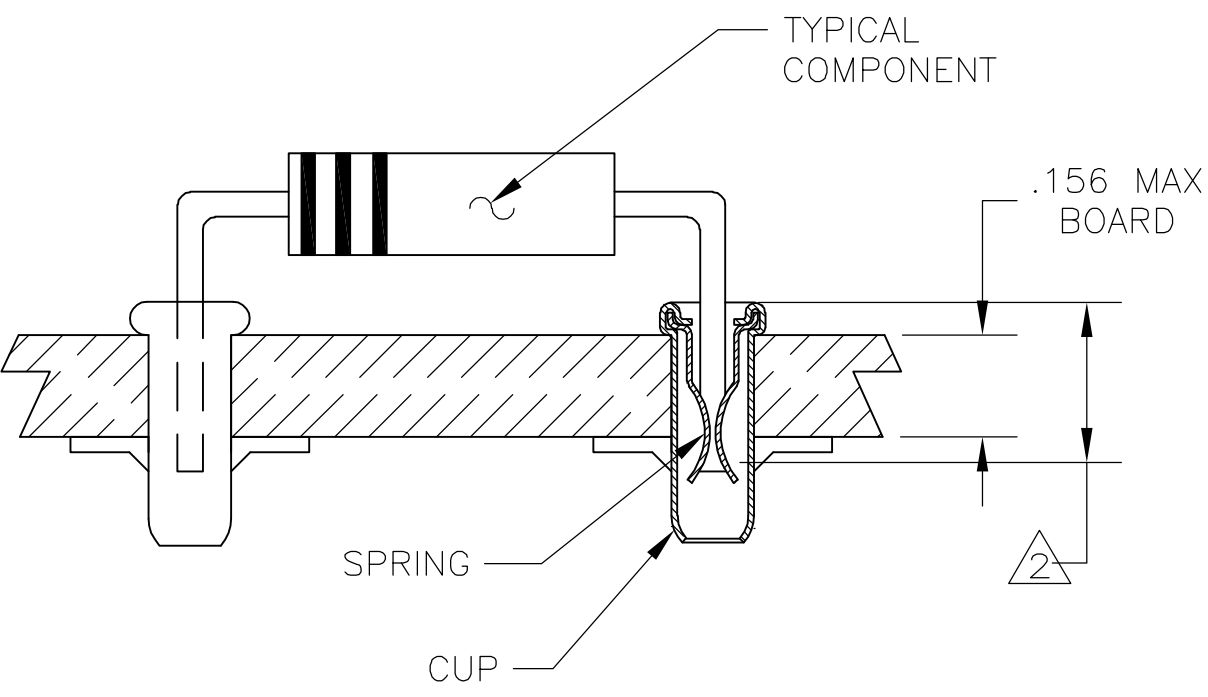
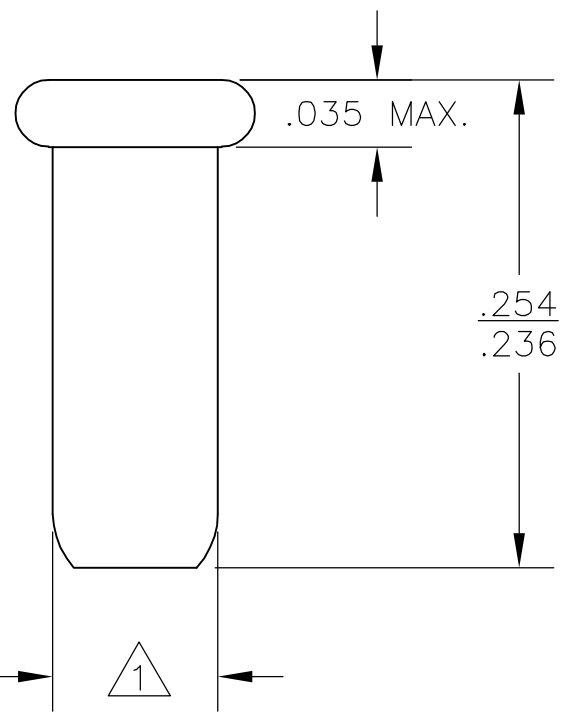
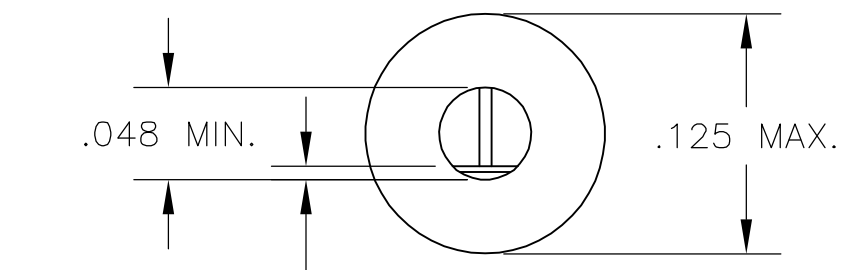
1 PART FITS IN TO A #43 DRILLED HOLE (.089±.0015) FOR HAND INSERTION, AND A #44 DRILLED HOLE (.086±.0015) FOR MACHINE INSERTION.

2 .145 MIN INSERTION DEPTH REQUIRED FOR A RELIABLE CONNECTION.

3. SPRING IS SECURED IN CUP WITH NO SPRING ROTATION PERMISSABLE.

4. LEAD RANGES & PERFORMANCE RESULTS:

LEAD RANGES (DIA)	.018-.020	.025-.032	.035-.040
MAX INSERTION FORCE	17 OZ	37 OZ	48 OZ
MIN EXTRACTION FORCE	1.0 OZ	1.5 OZ	2.0 OZ
MILLVOLT DROP (MAX)	2.00 mV	1.75 mV	1.50 mV



OBSOLETE	TIN-LEAD	PRE-TIN	380635-5
SUPSD BY 380635-2	TIN-LEAD	.000050 MIN Au OVER	380635-4
OBSOLETE	.000050 MIN Au OVER	.000050 MIN NICKEL	380635-3
OBSOLETE	TIN-LEAD	.000030 MIN Au OVER	380635-2
	.000030 MIN Au OVER	.000030 MIN NICKEL	380635-1
CUP		SPRING	PART NO.
FINISH			

DIMENSIONS: INCHES		TOLERANCES UNLESS OTHERWISE SPECIFIED:		DWN		CHK		APVD		PRODUCT SPEC		APPLICATION SPEC		WEIGHT	
0 PLC		± -		D.HUMBERT		-		J.HAVENER		-		-		-	
1 PLC		± -		07FEB2007		-		J.HAVENER		-		-		-	
2 PLC		± -				-		J.HAVENER		-		-		-	
3 PLC		± -				-		-		-		-		-	
4 PLC		± -				-		-		-		-		-	
ANGLES		± -				-		-		-		-		-	
MATERIAL		FINISH		THIS DRAWING IS A CONTROLLED DOCUMENT.		Tyco Electronics Corporation		Harrisburg, PA 17105-3608		REUSABLE COMPONENT		RECEPTACLE		RESTRICTED TO	
CUP - COPPER		SEE TABLE				-		-		-		-		-	
SPRING - Be-Cu						-		-		-		-		-	
				CUSTOMER DRAWING				SCALE NTS		SHEET 1 OF 1		REV W2			