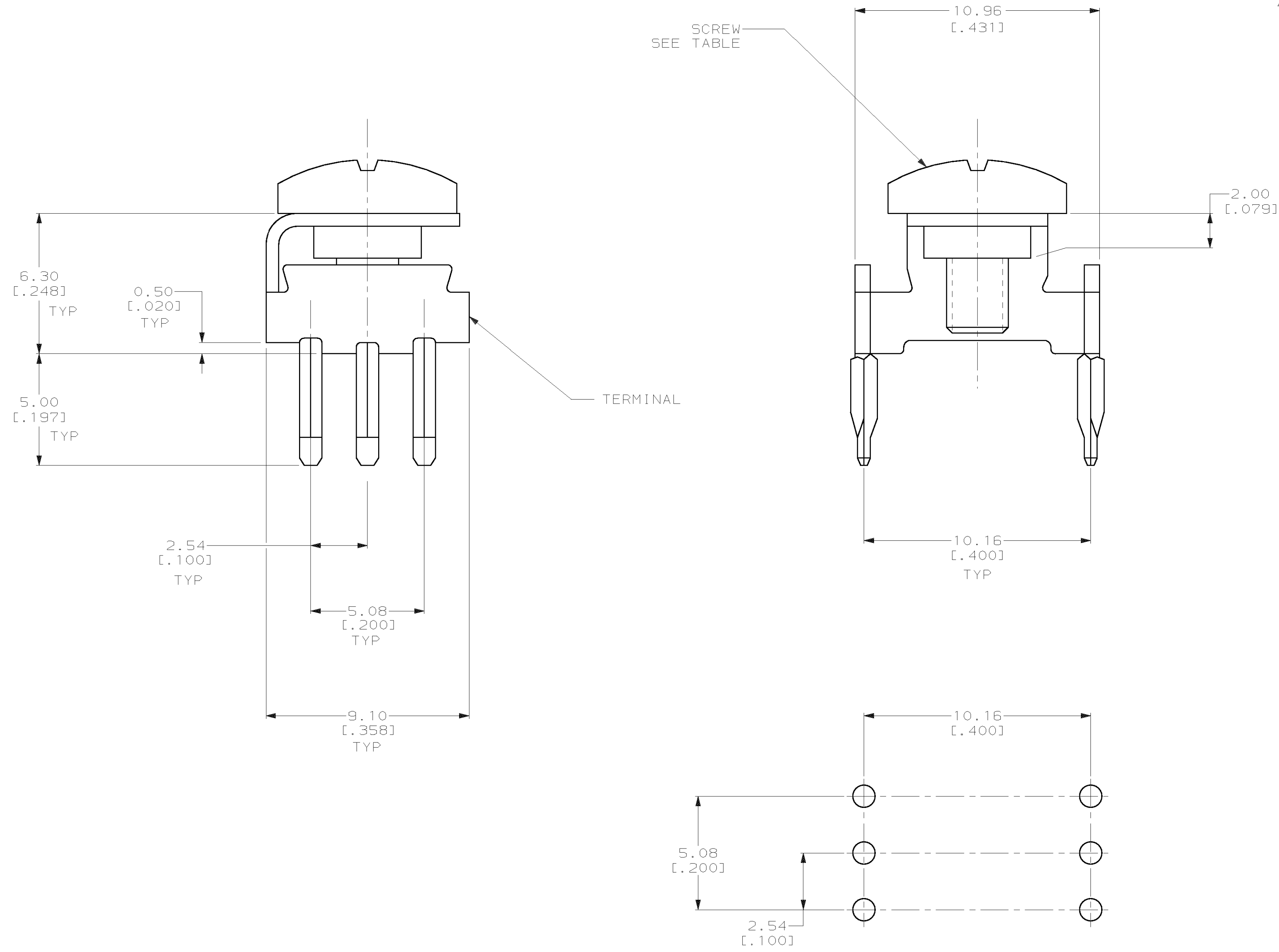


LOC		DIST		P		F		ZONE		LTR		REVISIONS			
FT	0											DESCRIPTION	DATE	APPD	
												C	REVISE PER ECN 063B-0428-00	24AUG00	SU/SH

- ① TERMINAL: PHOSPHOR BRONZE; SCREW: STAINLESS STEEL.
- ② 2.54μm[.000100] MIN TIN OVER 1.25μm[.000050] MIN NICKEL.
- ③ PASSIVATED.



RECOMMENDED P.C. BOARD LAYOUT

PLATED THROUGH HOLE SPECIFICATION	
DRILLED HOLE	1.6±0.025
Cu- THICKNESS	25-75 μm
SnPb- THICKNESS	4-10 μm
FINISHED HOLE	1.39-1.54
FINISHED HOLE (AFTER REFLOW)	1.36-1.54

THIS DRAWING IS A CONTROLLED DOCUMENT FOR AMP INCORPORATED. IT IS SUBJECT TO CHANGE AND THE CONTROLLING ENGINEERING ORGANIZATION SHOULD BE CONTACTED FOR THE LATEST REVISION.

DO NOT SCALE PRINT. UNLESS SPECIFIED DIMENSIONS IN mm [INCHES] TOLERANCES ON: 2 PLC DEC ± 0.13 [0.005] 3 PLC DEC ± - ANGLES ± -	DR 11-01-94 D.BROCKWAY CHK 11-11-94 R.STONE APPD 11-11-94 T.COULSON APPD 11-11-94 T.COULSON	MATERIAL ① FINISH SCREW: ③ TERMINAL: ②	PRODUCT SPEC - APPLICATION SPEC - WEIGHT -
--	--	--	---

M4 X 0.5	213816-2
M4 X 0.6	213816-1
SCREW	PART NUMBER
AMP AMP Incorporated Harrisburg, PA 17105-3608	
NAME POWER TAP ASSY, 6 POSN	
SIZE D	CAGE CODE 00779
DRAWING NO. C-213816	SHEET 1 OF 1