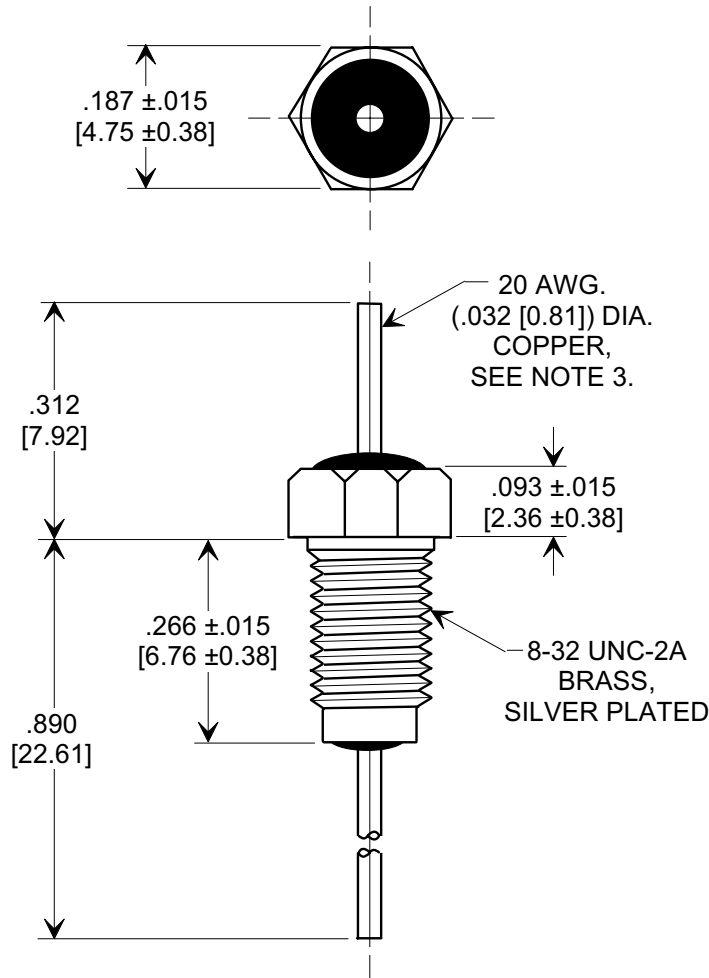
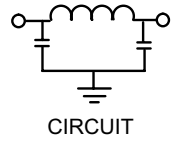
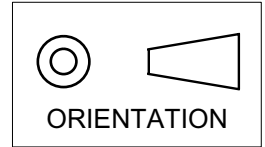


# MARKETING SALES DRAWING

**DIMENSIONS IN INCHES - DO NOT SCALE THIS DRAWING**  
**DIMENSIONS IN METRIC - [ ]**

Electrical Testing  
 per Tusonix standard  
 test plans and Mil-Std-202  
 Test Methods.



**NOTES:**

- SUPPLIED WITH SILVER PLATED HEX NUT AND LOCKWASHER.
- TUSONIX STANDARD PART NUMBER: 4201-000.  
 TUSONIX RoHS COMPLIANT PART NUMBER: 4201-000 LF.  
 CUSTOMER MUST SPECIFY STANDARD OR RoHS PART NUMBER WHEN ORDERING.
- LEAD FINISH: STANDARD PART #: 60/40 SOLDER PLATED. RoHS PART #: SILVER PLATED.
- PART MARKING: TRADEMARK AND VARIATION NUMBER ON HEX FLATS.  
 STANDARD PART: BLACK INK. RoHS PART: GREEN INK.

MIN. CAP. (pF)	WORKING VOLTAGE (VVdc)		CURRENT (Idc)	I.R. MIN.	DWV	MINIMUM NO LOAD INSERTION LOSS (dB) AT 25°C PER MIL-STD -220			
	85°C	125 °C				10 MHz	100 MHz	1 GHz	10 GHz
1500	200	100	10 A	10 G	400 VDC 2 SEC.	5	45	65	70

X-2015 Rev-0	<b>REVISION RECORD</b>								--TOLERANCES-- Unless Otherwise Specified	Title							
	0	1	2	3	4	5	6	7		8	<b>BUSHING STYLE EMI FILTER</b>						
	Original Release C.O.	.093 WAS .094. LE 12-9-83	WAS SK6644-030-S. L.E. 1-13-84	DIM'S & TOL'S REV'D. RELEASED. L.E. 1-8-85	CURRENT UNIT "A" ADDED. L.E. 8-20-85	2595	10 GHz WAS 60. E.C. 7-14-92	6774	RDN TO COMP FMT & ADDED METRIC. S.M. 01-23-02	20020123-1-01	DIM. .890 REMOVED TOL. S.M. 02-18-02	20020215-6-01	ADDED NOTES. S.M. 07-27-05	20050726-2-12	DECIMAL ± .031 [0.79]	Drawn S.M. 01-23-02	Scale 4 X
	ANGLES ±													Approved T.C. 01-23-02			
	<b>TUSONIX</b> TUCSON, ARIZONA										<b>A</b>	<b>4201-000</b>					