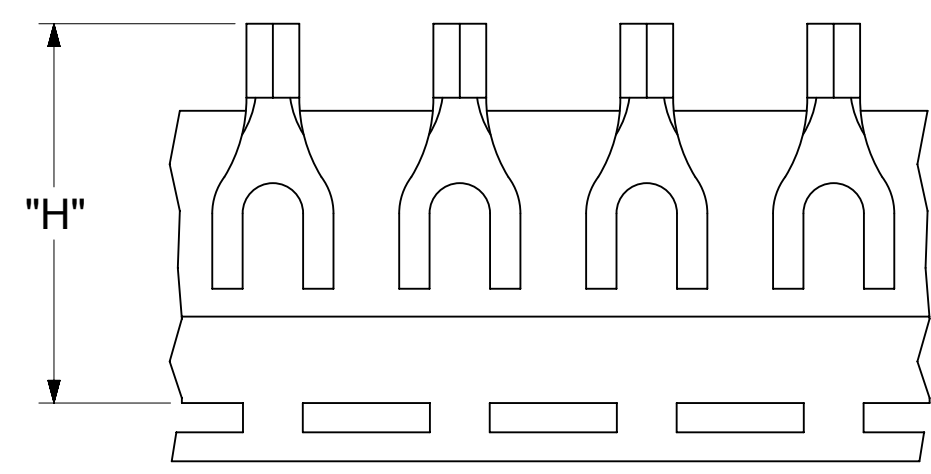
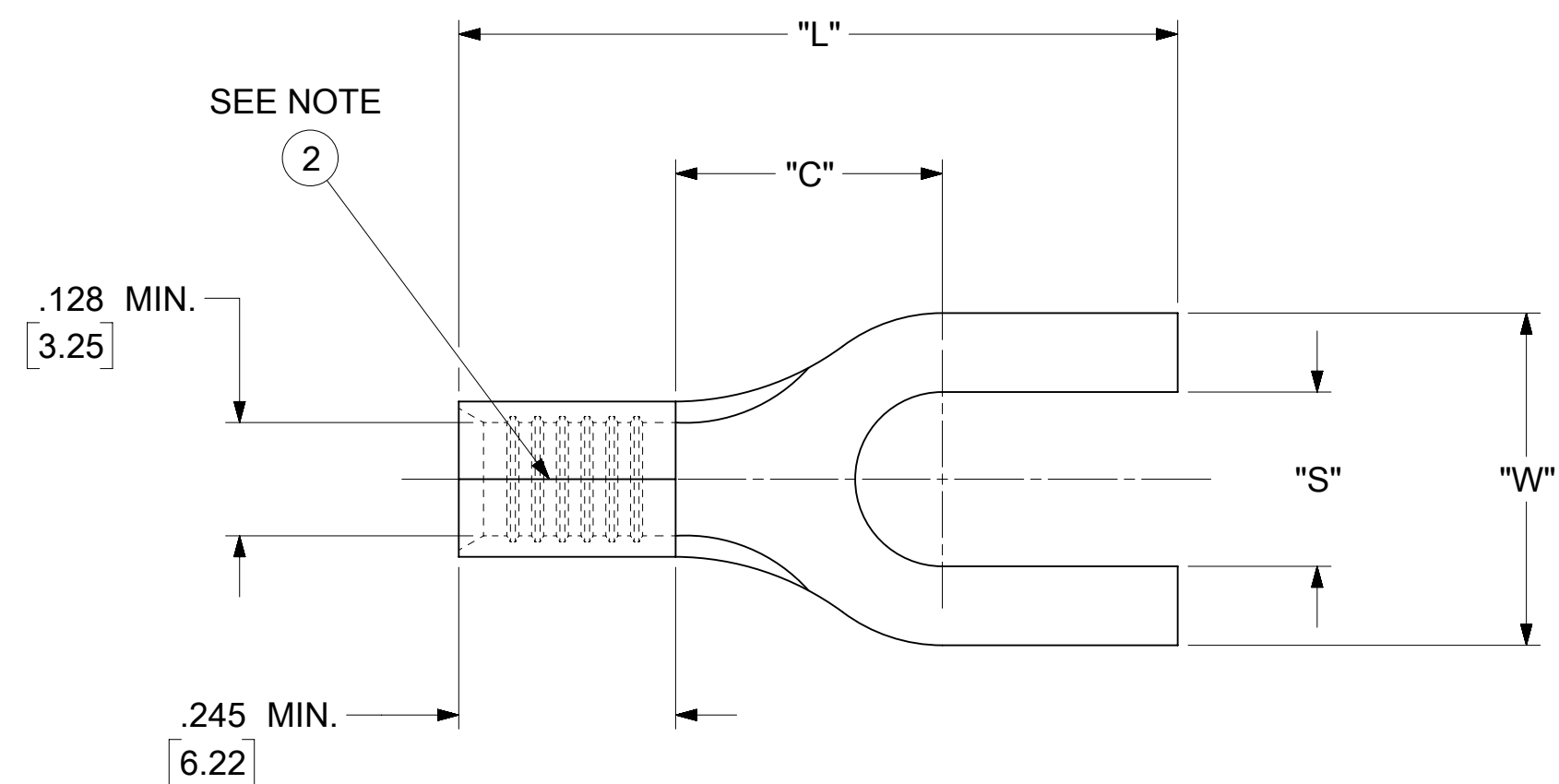


H
G
F
E
D
C
B
A

LOOSE PIECE		TAPE MOUNTED		SPECIFICATIONS					
MATERIAL NUMBER	ENGINEERING NUMBER	MATERIAL NUMBER	ENGINEERING NUMBER	STUD SIZE	"S" ±.005 [0.13]	"W" ±.010 [0.25]	"C" MIN.	"L" MAX.	"H"
191470092	C-341-06	---	---	6	.146 [3.71]	.375 [9.53]	.301 [7.65]	.812 [20.62]	---
191470105	C-341-08	---	---	8	.173 [4.39]				
191470096	C-341-10	---	---	10	.198 [5.03]				
191470103	C-368-56	191470135	C-368-56T	56	.328 [8.33]	.533 [13.54]	.393 [9.98]	.965 [24.51]	1.426 [36.22]



PARTS ON TAPE

NOTES:

- MATERIAL:
 TERMINAL: COPPER (STOCK TKN .040±.001 [1.02])
 PLATING: ELECTRO-TIN (.0003 MIN).
- BRAZED SEAM
- WIRE SIZE: 12-10 AWG
 4.0-6.0 MM²
- "UL" LISTING #E32244
 "CSA" LISTING #18689
- ALL DIMENSIONS IN INCHES/[MM].
- PARTS ARE ROHS COMPLIANT.
- DIMS. SHOWN ARE FOR REFERENCE ONLY.

SYMBOLS ▽ = 0 ▽ = 0 ▽ = 0 ▽ = 0 ▽ = 0 ▽ = 0 ▽ = 0 ▽ = 0 ▽ = 0 ▽ = 0 ▽ = 0	THIS DRAWING CONTAINS INFORMATION THAT IS PROPRIETARY TO MOLEX ELECTRONIC TECHNOLOGIES, LLC AND SHOULD NOT BE USED WITHOUT WRITTEN PERMISSION		CURRENT REV DESC:						
	DIMENSION UNITS	SCALE	EC NO: 625848			DRWN: ABENJAMINLW 2019/09/12 CHK'D: GROJAS01 2019/10/17 APPR: JMACNEIL 2019/10/18			
	INCH/MM	NTS	DRWN: JJ 1984/11/28						
GENERAL TOLERANCES (UNLESS SPECIFIED)		INITIAL REVISION:		DOCUMENT NUMBER	DOC TYPE	DOC PART	REVISION		
4 PLACES ± --- ± ---	3 PLACES ± --- ± .005	2 PLACES ± 0.13 ± .01	1 PLACE ± 0.25 ± ---	0 PLACES ± --- ± ---	CCD30302		PSD	001	A
ANGULAR TOL ± 0.5 °		THIRD ANGLE PROJECTION		DRAWING	SERIES	MATERIAL NUMBER	CUSTOMER	SHEET NUMBER	
DRAFT WHERE APPLICABLE MUST REMAIN WITHIN DIMENSIONS				C-SIZE	19147	SEE TABLE	GENERAL MARKET	1 OF 1	