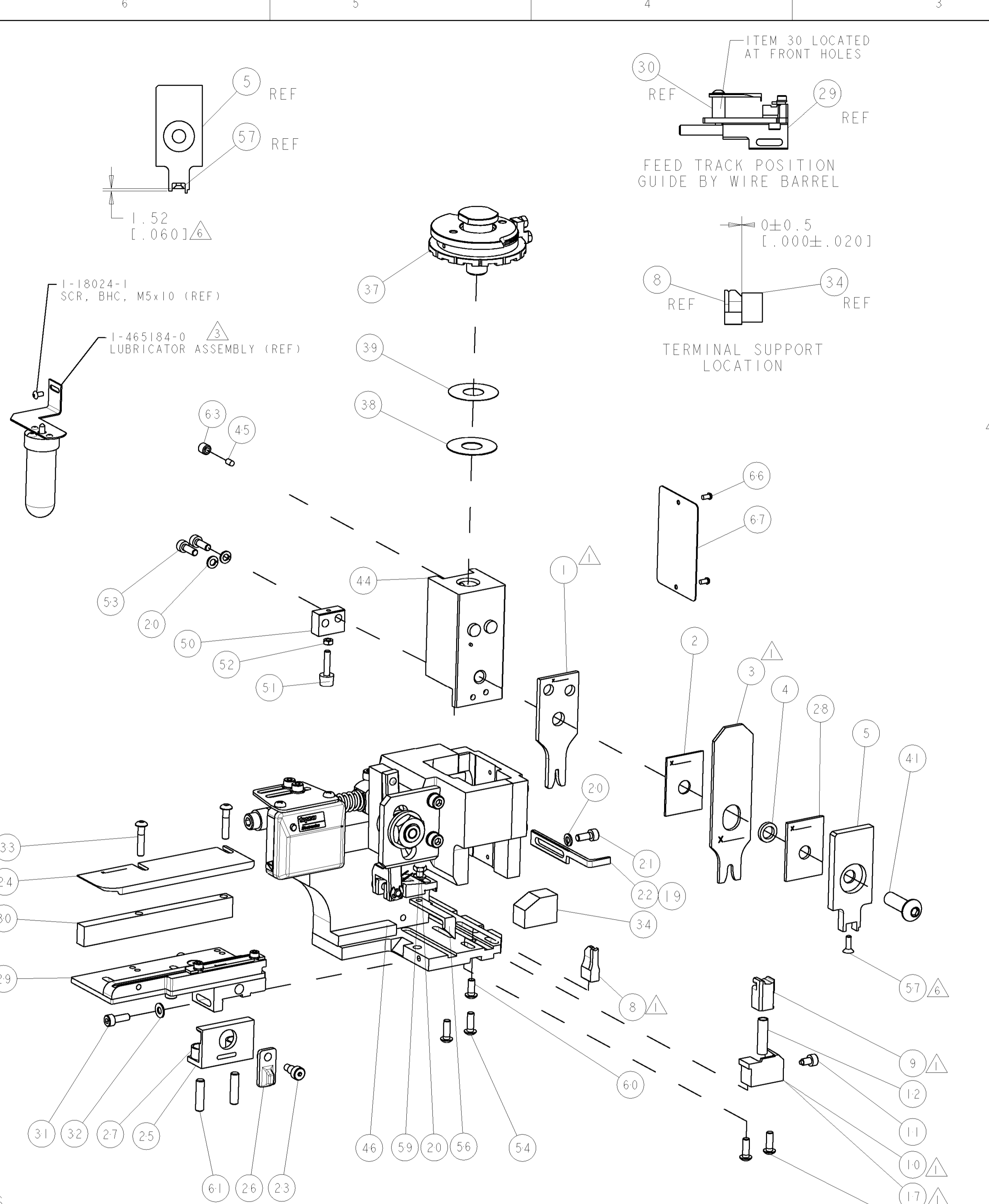


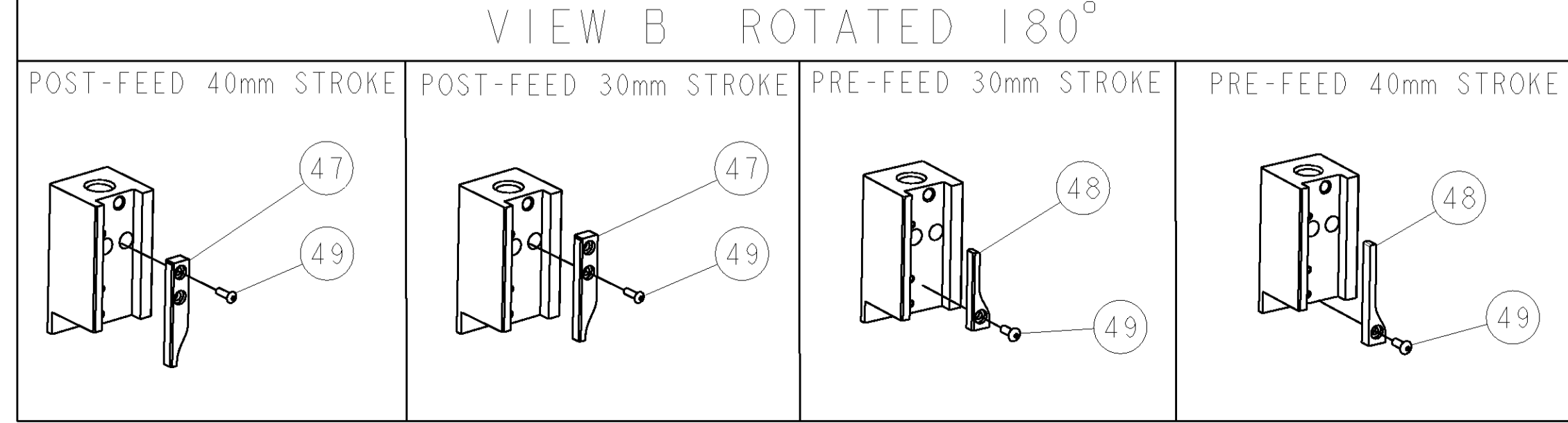
PART NUMBER	REV	TERMINATOR	FEED TYPE	DESCRIPTION
1528631-1	A	LEADMAKER	MECH POST FEED	CUTS CARRIER
1528631-2	A	BENCH	MECH PRE FEED	CUTS CARRIER
1528631-6	A	LEADMAKER	MECH POST FEED	CONTINUOUS CARRIER
7-1528631-1	A	LEADMAKER	MECH POST FEED	-1 AND SPARE PARTS
7-1528631-2	A	BENCH	MECH PRE FEED	-2 AND SPARE PARTS
7-1528631-6	A	LEADMAKER	MECH POST FEED	-6 AND SPARE PARTS
7-1528631-7	A	-	-	SPARE PARTS KIT

CRIMP DATA	FCI TERMINAL	FCI CRIMP SPEC
TERMINAL NAME: 2.8mm FEMALE TERMINALS		
CRIMP	SIZE	TYPE
WIRE	2.03 [1.080 IN]	F
INSUL	3.94 [1.155 IN]	O
WIRE STRIP LENGTH		APPL INSTRUCTIONS
3.90-4.70 [1.154-1.185 IN]		408-8322 & 408-8490
TERMINAL APPL SPEC		FEED
FCI DRW 9 084 11 10		13.00 [1.512 IN]
TERMINALS APPLIED		
TYCO PN	MANUF'S PN	TYCO SEAL PN
1572981-1	6 001 24 31	963294-1
1572981-2	6 001 30 31	-
1572981-3	6 001 32 32	-
1572981-4	6 001 33 32	-
WIRE SIZE	CRIMP HEIGHT	REF SETTING
1.00mm ²	1.30 ±0.05 [1.051 ±.002 IN]	C 4
0.75mm ²	1.25 ±0.05 [1.049 ±.002 IN]	C 6
0.50mm ²	1.20 ±0.05 [1.047 ±.002 IN]	D 0

- △ RECOMMENDED SPARE PARTS
- 2. GREASE RAM, CAM, CAM FOLLOWER AND FEED ROD LIGHTLY.
- △ CERTAIN TERMINALS REQUIRE LUBRICATION. REFER TO THE APPLICATOR INSTRUCTION SHEET FOR MORE INFORMATION.
- 4. LUBRICATE DAILY PER THE APPLICATOR INSTRUCTION SHEET SUPPLIED WITH THE APPLICATOR.
- △ THIS APPLICATOR APPLIES TERMINAL WITH A SEAL. INS RANGE SHOWN IS THAT OF THE SEAL. TERMINAL INS RANGE IS 2.1mm MAX.
- △ APPLY TORQ-SEAL IN ALLEN SOCKET TO FILL HOLE AFTER FLAT HD HAS BEEN ADJUSTED TO CORRECT HEIGHT AT QUALIFICATION. APPLY #1-23419-5 LOC-TITE TO THREADS.



*** WARNING**
ON INSTALLATION, SET WIRE DISC TO LARGEST WIRE SIZE SETTING. USE OF SETTINGS BELOW MIN. REQUIRED CRIMP HEIGHT SETTING WILL CAUSE DAMAGE TO CRIMP TOOLING.



77	76	72	71	6	2	1	PART NO	DESCRIPTION	ITEM NO
-	-	-	-	-	-	-	-	-	83
-	-	-	-	-	-	-	-	-	82
-	-	-	-	-	-	-	-	-	81
-	-	-	-	-	-	-	-	-	80
-	-	-	-	-	-	-	-	-	79
-	-	-	-	-	-	-	-	-	78
-	-	-	-	-	-	-	-	-	77
-	-	-	-	-	-	-	-	-	76
-	-	-	-	-	-	-	-	-	75
-	-	-	-	-	-	-	-	-	74

SET UP GAGE 458637-3		LOC	DIST	REVISIONS																																	
A	66			REV	DATE	BY																															
				A	SEE ECO-06-008060	05APR2006 L.J.L. MC																															
-	-	-	-	-	-	73																															
-	-	-	-	-	-	72																															
-	-	-	-	-	-	71																															
-	-	-	-	-	-	70																															
-	-	-	-	-	-	69																															
-	-	-	-	-	-	68																															
-	-	-	-	-	-	67																															
-	-	-	-	-	-	66																															
-	-	-	-	-	-	65																															
-	-	-	-	-	-	64																															
-	-	-	-	-	-	63																															
-	-	-	-	-	-	62																															
-	-	-	-	-	-	61																															
-	-	-	-	-	-	60																															
-	-	-	-	-	-	59																															
-	-	-	-	-	-	58																															
-	-	-	-	-	-	57																															
-	-	-	-	-	-	56																															
-	-	-	-	-	-	55																															
-	-	-	-	-	-	54																															
-	-	-	-	-	-	53																															
-	-	-	-	-	-	52																															
-	-	-	-	-	-	51																															
-	-	-	-	-	-	50																															
-	-	-	-	-	-	49																															
-	-	-	-	-	-	48																															
-	-	-	-	-	-	47																															
-	-	-	-	-	-	46																															
-	-	-	-	-	-	45																															
-	-	-	-	-	-	44																															
-	-	-	-	-	-	43																															
-	-	-	-	-	-	42																															
-	-	-	-	-	-	41																															
-	-	-	-	-	-	40																															
-	-	-	-	-	-	39																															
-	-	-	-	-	-	38																															
-	-	-	-	-	-	37																															
-	-	-	-	-	-	36																															
-	-	-	-	-	-	35																															
-	-	-	-	-	-	34																															
-	-	-	-	-	-	33																															
-	-	-	-	-	-	32																															
-	-	-	-	-	-	31																															
-	-	-	-	-	-	30																															
-	-	-	-	-	-	29																															
-	-	-	-	-	-	28																															
-	-	-	-	-	-	27																															
-	-	-	-	-	-	26																															
-	-	-	-	-	-	25																															
-	-	-	-	-	-	24																															
-	-	-	-	-	-	23																															
-	-	-	-	-	-	22																															
-	-	-	-	-	-	21																															
-	-	-	-	-	-	20																															
-	-	-	-	-	-	19																															
-	-	-	-	-	-	18																															
-	-	-	-	-	-	17																															
-	-	-	-	-	-	16																															
-	-	-	-	-	-	15																															
-	-	-	-	-	-	14																															
-	-	-	-	-	-	13																															
-	-	-	-	-	-	12																															
-	-	-	-	-	-	11																															
-	-	-	-	-	-	10																															
-	-	-	-	-	-	9																															
-	-	-	-	-	-	8																															
-	-	-	-	-	-	7																															
-	-	-	-	-	-	6																															
-	-	-	-	-	-	5																															
-	-	-	-	-	-	4																															
-	-	-	-	-	-	3																															
-	-	-	-	-	-	2																															
-	-	-	-	-	-	1																															
-77	-76	-72	-71	-6	-2	-1	PART NO	DESCRIPTION	ITEM NO																												
<table border="1"> <tr> <td>0 PLG</td> <td>±</td> </tr> <tr> <td>1 PLG</td> <td>±</td> </tr> <tr> <td>2 PLG</td> <td>±</td> </tr> <tr> <td>3 PLG</td> <td>±</td> </tr> <tr> <td>4 PLG</td> <td>±</td> </tr> <tr> <td>ANGLES</td> <td>±</td> </tr> </table>										0 PLG	±	1 PLG	±	2 PLG	±	3 PLG	±	4 PLG	±	ANGLES	±																
0 PLG	±																																				
1 PLG	±																																				
2 PLG	±																																				
3 PLG	±																																				
4 PLG	±																																				
ANGLES	±																																				
<table border="1"> <tr> <td>APPROVED</td> <td>DATE</td> <td>BY</td> <td>NAME</td> </tr> <tr> <td>M. CLIFFORD</td> <td>03MAR2006</td> <td></td> <td></td> </tr> <tr> <td>PRODUCT SPEC</td> <td></td> <td></td> <td></td> </tr> <tr> <td>APPLICATION SPEC</td> <td></td> <td></td> <td></td> </tr> <tr> <td>See Table</td> <td></td> <td></td> <td></td> </tr> <tr> <td>WEIGHT</td> <td></td> <td></td> <td></td> </tr> <tr> <td>A</td> <td>00779</td> <td>C=1528631</td> <td></td> </tr> </table>										APPROVED	DATE	BY	NAME	M. CLIFFORD	03MAR2006			PRODUCT SPEC				APPLICATION SPEC				See Table				WEIGHT				A	00779	C=1528631	
APPROVED	DATE	BY	NAME																																		
M. CLIFFORD	03MAR2006																																				
PRODUCT SPEC																																					
APPLICATION SPEC																																					
See Table																																					
WEIGHT																																					
A	00779	C=1528631																																			
<table border="1"> <tr> <td>TYCO Electronics</td> <td>Tyco Electronics</td> </tr> <tr> <td>Harrisburg, PA 17105-3608</td> <td>Harrisburg, PA 17105-3608</td> </tr> <tr> <td colspan="2">FINE ADJUST SIDE FEED HDI APPLICATOR</td> </tr> <tr> <td>SCALE</td> <td>3:5</td> </tr> <tr> <td>SHEET</td> <td>1</td> </tr> <tr> <td>OF</td> <td>1</td> </tr> <tr> <td>REV</td> <td>A</td> </tr> </table>										TYCO Electronics	Tyco Electronics	Harrisburg, PA 17105-3608	Harrisburg, PA 17105-3608	FINE ADJUST SIDE FEED HDI APPLICATOR		SCALE	3:5	SHEET	1	OF	1	REV	A														
TYCO Electronics	Tyco Electronics																																				
Harrisburg, PA 17105-3608	Harrisburg, PA 17105-3608																																				
FINE ADJUST SIDE FEED HDI APPLICATOR																																					
SCALE	3:5																																				
SHEET	1																																				
OF	1																																				
REV	A																																				