

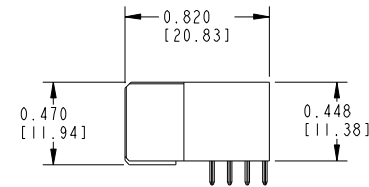
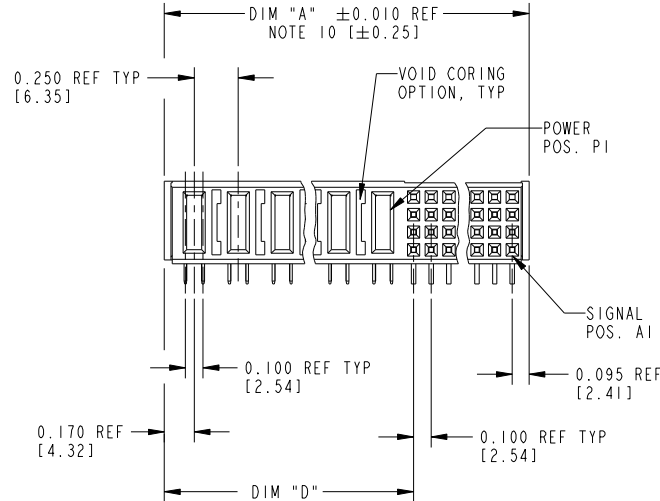
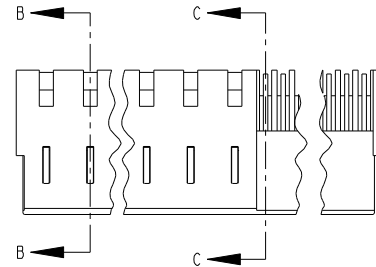
Tous droits strictement réservés. Reproduction ou communication à des tiers interdite, sous quelque forme que ce soit sans autorisation écrite du propriétaire. Propriété de c.FCI. Droits de reproduction FCI.



All rights strictly reserved. Reproduction or issue to third parties in any form whatever is not permitted without written authority from the proprietor. Property of FCI. Copyright FCI.

PRODUCT NUMBER  
51765-A00CCDDE0\_  
SEE NOTE 1

1 2 3 4



THIS FILE WAS ORIGINALLY CREATED IN THE PRO ENGINEER ENVIRONMENT AND ANY FUTURE REVISIONS TO THIS FILE MUST BE MADE IN THE PRO ENGINEER ENVIRONMENT

mat'l code				tolerances unless otherwise specified		CUSTOMER COPY	FCI www.fciconnect.com
SEE NOTE 2							
ltr	ecn no.	dr	date	linear	.XX $\pm$ .01/.XX $\pm$ .3	INCH / MM	product family PWRBLADE code 213
J	DG07-0012	JULIA	01/12/07		.XXX $\pm$ .005/.XX $\pm$ .13		
K	DG07-0118	RYAN	03/29/07		.XXX $\pm$ .0020/.XX $\pm$ .051	sheet index	SHEET 1 OF 3
L	DG08-0239	JC	09/11/08	angles	0° $\pm$ 2°		
F	V02389	JRW	10-05-00	dr	D.BOGLE 05-18-99 J. BROWN 05-18-99	1 2 3	4
G	V21512	TAB	10-04-02	chr	J. BROWN 05-18-99		
H	V03-0769	TAB	07-17-03	appd	J. BROWN 05-18-99		

form no. 7530-001-103

1 2

3

cage code 22526

4

Tous droits strictement réservés. Reproduction ou communication à des tiers interdite, sous quelque forme que ce soit sans autorisation écrite du propriétaire. Propriété de c.FCI. Droits de reproduction FCI.



All rights strictly reserved. Reproduction or issue to third parties in any form whatever is not permitted without written authority from the proprietor. Property of FCI. Copyright FCI.

PRODUCT NUMBER	DIM	LENGTH FORMULAS (SEE NOTE 10)
51765-A00CCCDDE0_	DIM "A"	.250 [6.35] x DD + .100 [2.54] x (CCC/4) + .090 [2.29] (NOTE 10)
SEE NOTE 1	DIM "D"	.250 [6.35] x DD + .095 [2.41]
	DIM "F"	.250 [6.35] x DD + .100 [2.54] x (CCC/4) + .120 [3.05]
	DIM "G"	.250 [6.35] x DD - .025 [0.64]

CONNECTOR NOTES

- ① PRODUCT NUMBER CODE:  
51765 - A 00 CCC DD E 0 LF
- W/O THIS SUFFIX: 100u"/2.54um SnPb ON PCB INTERFACE
  - WITH THIS SUFFIX: 78u"/1.98um Sn ON PCB INTERFACE  $\triangle$
  - ALWAYS '0' (ZERO) (NOTE 8)
  - TAIL OPTIONS (NOTE 7)
  - NUMBER OF LEFT END POWER CONTACTS (NOTE 6)
  - NUMBER OF SIGNAL CONTACTS (NOTE 5)
  - ALWAYS '00' (ZERO,ZERO) (NOTE 4)
  - PLATING (NOTE 3)
  - BASE NUMBER
- ② HOUSING MATERIAL: GLASS FILLED V-O HIGH TEMP THERMO PLASTIC.  
SIGNAL CONTACT MATERIAL: COPPER ALLOY  
POWER CONTACT MATERIAL: COPPER ALLOY
- ③ PLATING OPTION:  
 $\triangle$  = SEE PRINT 10064183 FOR PLATING SPEC OF 51765-100CCCDDE0; 51765-100CCCDDE0LF
- ④ THIS PART IS NOT AVAILABLE WITH RIGHT SIDE POWER CONTACTS.
- ⑤ SIGNAL CONTACTS, 004 TO 148 AVAILABLE FOR SOLDER TO BOARD,  
020 TO 148 AVAILABLE FOR PRESS-FIT.
- ⑥ LEFT END POWER CONTACTS, 01 TO 20 AVAILABLE.  
MAXIMUM OF 20 POWER CONTACTS PER CONNECTOR
- ⑦ TAIL OPTIONS:  
A = .135 ± .010 [3.43 ± 0.25] SOLDER TO BOARD  
B = .090 + .005 / - .010 [2.29 + 0.13 / - 0.25]  
SOLDER TO BOARD)  
C = .154 ± .010 [3.91 ± 0.25] PRESS-FIT TO BOARD

- ⑧ BOARD RETENTION NOT AVAILABLE WITH GUIDELESS ENDS.
- ⑨ MANUFACTURE'S NAME, P/N, AND DATE CODE TO APPEAR ON THIS SURFACE.
- ⑩ THE MAXIMUM OVERALL LENGTH (DIM A) OF A PART IS 8.00 [203.2]
11. PRODUCT SPECIFICATION GS-12-149  
12. APPLICATION SPECIFICATION BUS-20-067

PCB NOTES:

13. ALL DIMENSIONS ARE BASIC UNLESS OTHERWISE SPECIFIED.  
14. ALL THROUGH HOLES ARE LOCATED WITH A TRUE POSITION OF .004[0.10]  
15. ALL HOLE DIAMETERS ARE FINISHED HOLE SIZE.
- ⑬  $\varnothing 0.0453 \pm .001$  [1.151 ± 0.02] DRILLED HOLES PLATED WITH 0.0003 [0.007] MIN SnPb OR Sn OVER 0.001 [1.03] TO .003 [0.08] Cu PLATING TO ACHIEVE A .040 ± .003 [1.02 ± 0.08] HOLE.
17. A  $\triangle$  SYMBOL WILL BE NEXT TO ANY DIMENSION, VIEW, OR NOTE WHICH HAS BEEN MODIFIED WITH THE CURRENT DRAWING REVISION.

THIS FILE WAS ORIGINALLY CREATED IN THE PRO ENGINEER ENVIRONMENT AND ANY FUTURE REVISIONS TO THIS FILE MUST BE MADE IN THE PRO ENGINEER ENVIRONMENT

mat'l code				tolerances unless otherwise specified		CUSTOMER COPY		FCI www.fciconnect.com	
ltr	ecn no.	dr	date	linear	.XX±.01/.X±.3	projection	title		
L					.XXX±.005/.XX±.13		RIGHT ANGLE RECEPTACLE w/o GUIDE PIN SIGNAL / POWER		
				angles	.XXX±.0020/.XX±.051	$0^\circ \pm 2^\circ$	product family	PWRBLADE	code
				dr	D.BOGLE 05-18-99	INCH / MM	size	51765	213
				enrg	J. BROWN 05-18-99	scale	dwg no	2	SHEET
				chr	J. BROWN 05-18-99	1:1			?
				appd	J. BROWN 05-18-99				
sheet index	revision sheet								

form no. 7530-001-103

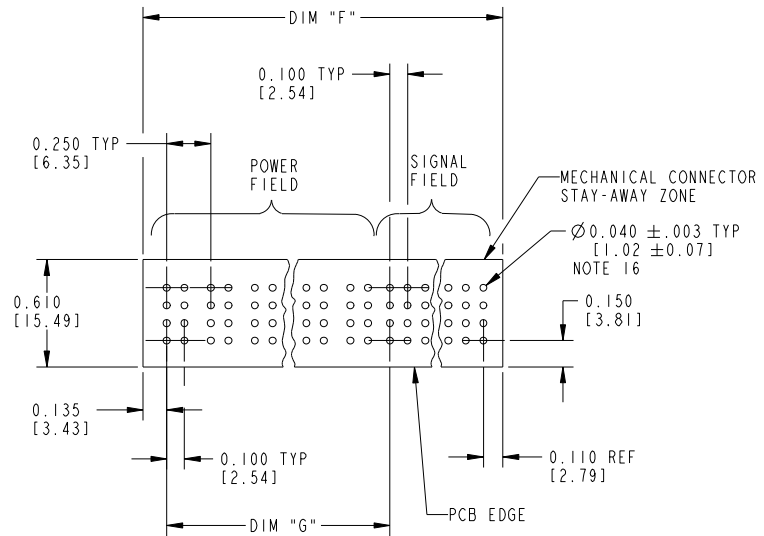
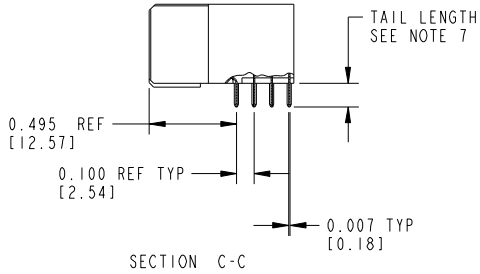
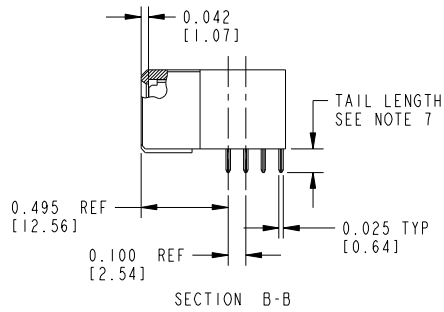
cage code 22526

Tous droits strictement réservés. Reproduction ou communication à des tiers interdite, sous quelque forme que ce soit sans autorisation écrite du propriétaire. Propriété de c.FCI. Droits de reproduction FCI.

All rights strictly reserved. Reproduction or issue to third parties in any form whatever is not permitted without written authority from the proprietor. Property of FCI. Copyright FCI.



PRODUCT NUMBER  
51765-A00CCDDE0\_\_  
SEE NOTE 1



mat'l code				tolerances unless otherwise specified		CUSTOMER COPY		www.fciconnect.com		
ltr	ecn no.	dr	date	linear	.XX±.01/.X±.3	projection		title		
L					.XXX±.005/.XX±.13			RIGHT ANGLE RECEPTACLE w/GUIDE PIN SIGNAL / POWER		product family
				angles	.XXX±.0020/.XX±.051		scale	PWRBLADE		
					0°±2°			size		code
				dr	D.BOGLE 05-18-99	1:1	A	dwg no		
				enr	J. BROWN 05-18-99			51765		213
				chr	J. BROWN 05-18-99			SHEET		3
				appd	J. BROWN 05-18-99			3		
sheet index		revision sheet						cage code		
								22526		

form no. 7530-001-103

cage code 22526