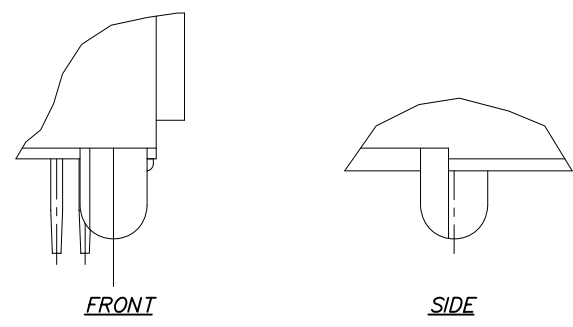
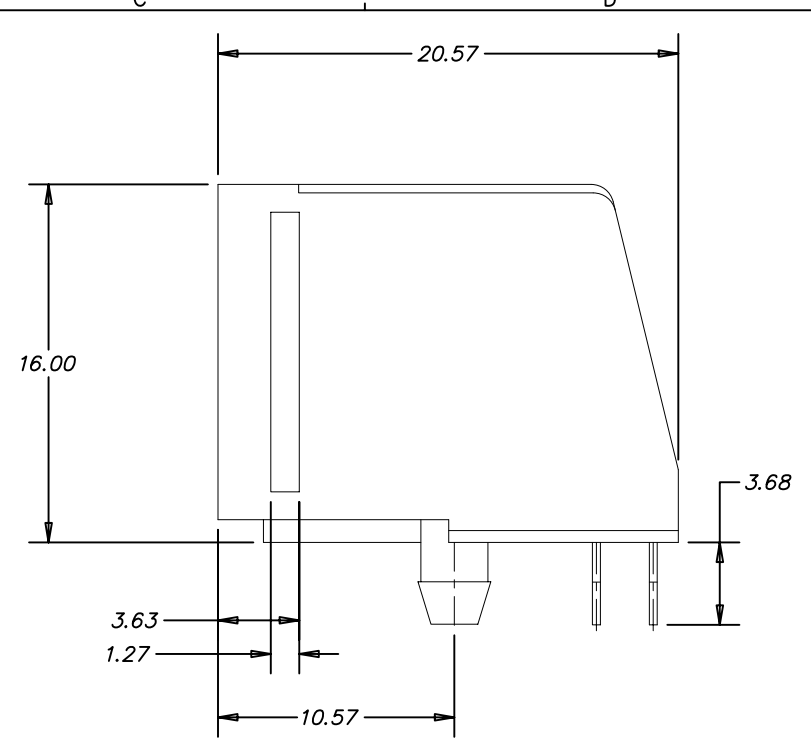
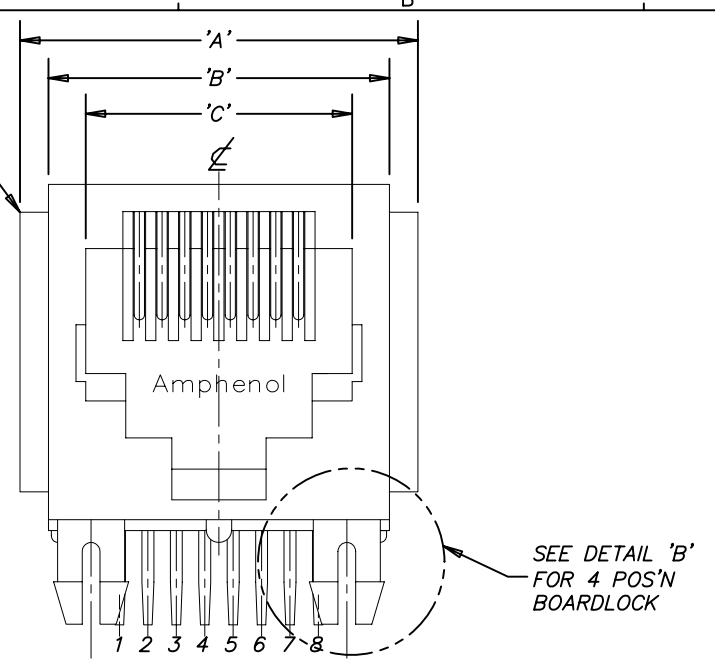


REVISIONS				
SYM	ZONE	ECN, ERN NO.	DATE	APPRD.
A		PROPOSAL	JUL14/06	L.CHAN



SHARP FOR
6 & 8 POS'N.
RADIUS FOR
4 POS'N.



DETAIL 'B'
4 POS'N CONNECTOR BOARDLOCK

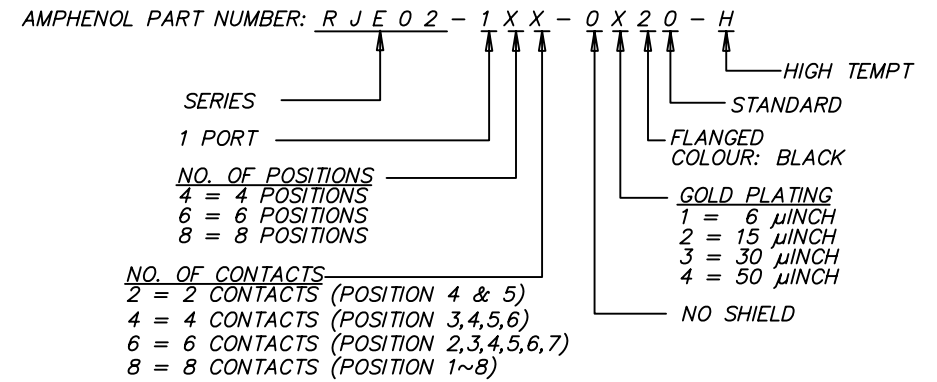
MATERIAL:

HOUSING: ENGINEER THERMOPLASTIC
FLAMMABILITY RATING UL94V-0
COLOUR: BLACK

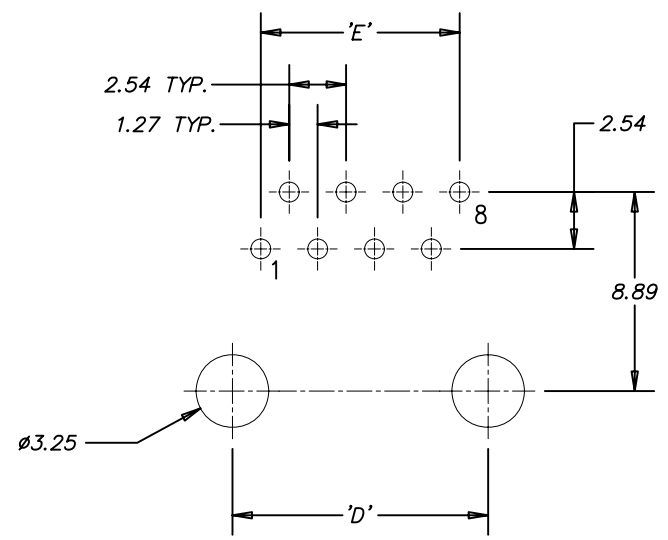
CONTACTS: PHOSPHOR BRONZE

PLATING: MATING AREA: SELECTIVELY PLATED GOLD-PER PART NUMBER OPTIONS
50 MICROINCH [1.27 MICRONS] MIN. NICKEL OVERALL
100 MICROINCH [2.54 MICRONS] MIN. MATTE-TIN OR GOLD FLASH OVER TAIL.

RECOMMENDED SOLDERING TEMPERATURE:
WAVE SOLDERING OR REFLOW SOLDERING AT 260°C
MAX. FOR 5 SEC MAX.



PART NUMBER	NO. OF POSITIONS	NO. OF CONTACTS	DIMENSIONS				
			'A'	'B'	'C'	'D'	'E'
RJE02-142-0X20	4	2	13.72	11.18	7.85	7.62	1.27
RJE02-144-0X20	4	4	13.72	11.18	7.85	7.62	3.81
RJE02-162-0X20	6	2	15.75	13.21	9.88	10.16	1.27
RJE02-164-0X20	6	4	15.75	13.21	9.88	10.16	3.81
RJE02-166-0X20	6	6	15.75	13.21	9.88	10.16	6.35
RJE02-188-0X20	8	8	17.78	15.24	11.91	11.43	8.89



RECOMMENDED P.C.B. LAYOUT
(COMPONENT SIDE OF BOARD)

LOCATE HOLES
Ø 0.005 [0.13]
POSITION DIMENSIONS ARE BASIC

THIS DOCUMENT CONTAINS PROPRIETARY INFORMATION AND SUCH INFORMATION MAY NOT BE DISCLOSED TO OTHERS FOR ANY PURPOSE OR USED FOR MANUFACTURING PURPOSES WITHOUT WRITTEN PERMISSION FROM AMPHENOL CANADA CORP.

DRAWN PAULW	DATE JUL14/06	Amphenol Canada Corp.		
DESIGNED		TITLE RJE02 SERIES ASSEMBLY, SIDE ENTRY, WITHOUT SHIELD (WITH FLANGE, WITHOUT KEY) - RoHS COMPLIANT		
CHECKED CHIGOW	JUL14/06	DWG C	DRAWING NO. P-RJE02-1XX-0X20-H	REV. A
I. E. APPRD.				
Q. A. APPRD.				
DWG. APPRD.				
ENG. REL. NO.		DWG C	DRAWING NO. P-RJE02-1XX-0X20-H	REV. A
REF.				
DIMENSIONS ARE IN mm	CODE ID. NO. 03554	SCALE 4/1	WT. -----	SURF. -----
				SHEET 1 OF 1