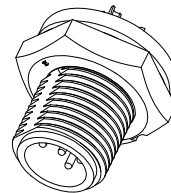
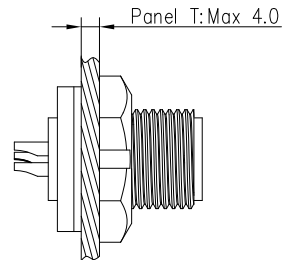
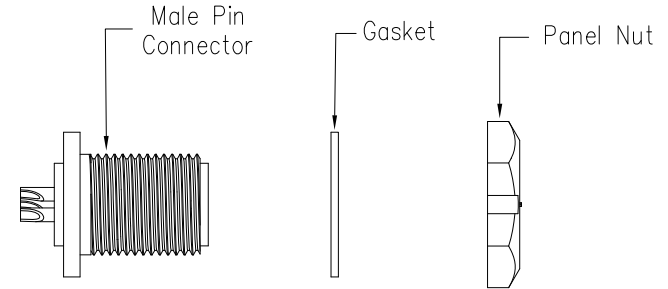
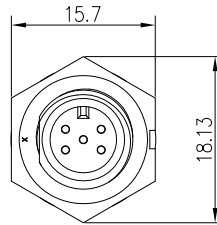
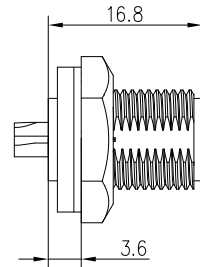
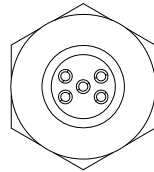


Recommended Panel Cut-out

21XXX515-01

Pin Number



Specification:

1. Operation Temperature: -45°C~105°C.
2. Insulation Resistance: 100MΩ at DC 500V.
3. Contact Resistance: <10mΩ.
4. Withstand Voltage: 1300V AC.
5. Operating Current: 2A.
6. Operating Voltage: AC 50V.
7. Waterproof Rate: IP67(Mated).
8. Connector: Nylon+GF, Black.
9. Panel Nut: Nylon, Black.
10. Gasket: Silicon, Gray.
11. Male Pin: Copper Alloy, Gold Plated.
12. Torque Rate: 0.5~0.7N·m.
13. RoHS Compliant.
14. UL Compliant.
15. Mating Cap P/N: 806-00028-00

7 Pin	8 Pin
P/N: 21007515-01	P/N: 21008515-01
5 Pin	6 Pin
P/N: 21005515-01	P/N: 21006515-01
Pin Assignments Front View	

UNIT: mm		DESCRIPTION Mini Series Screw Type Front Mount With Male Pin	
TOLERANCE		SCALE: 4:5	SHEET 1 OF 1
.X ±0.25		REV. C1	SIZE A4
.XX ±0.15		*: Inspection Item	
.XXX ±0.05			
ANGLES ±1°			

CHOGORI

REV.	ECN NO.	DESCRIPTION	SIGN	DATE
C1	N/A	INITIAL DRAWING	Victory	2020/04/20

PART NO	21XXX515-01	DRAWN BY	Victory	DATE	2020/04/20
DWG NO		CHECKED BY	Ivan	DATE	2020/04/20
CUSTOMER		APPROVED BY	Panson	DATE	2020/04/20

THIS INFORMATION IS CONFIDENTIAL AND IS DISCLOSED TO YOU ON CONDITION THAT NO FURTHER DISCLOSURE IS MADE BY YOU TO OTHER THAN CHOGORI PERSONNEL WITHOUT AUTHORIZATION FROM CHOGORI CORP.