

10 9 8 7 6 5 4 3 2 1

F

E

D

C

B

A

F

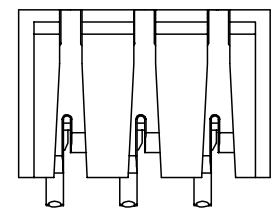
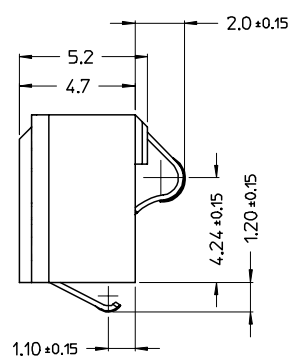
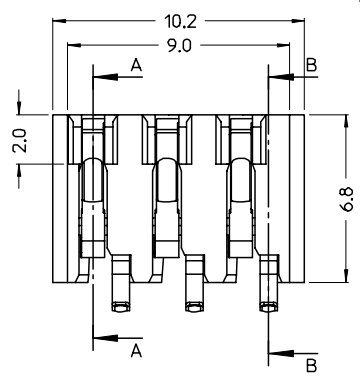
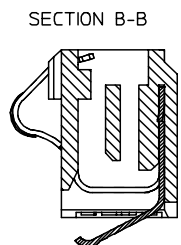
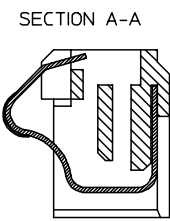
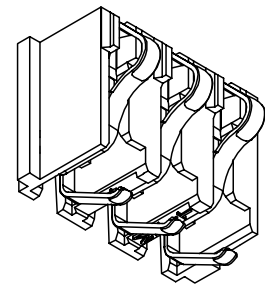
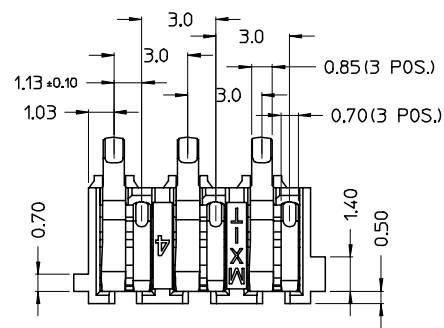
E

D

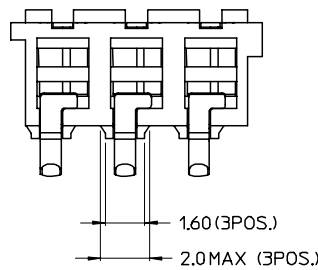
C

B

A



PROPOSED P.CBOARD LAYOUT
COMPONENT SIDE



MATERIALS:
 - HOUSING: BLACK PBT GF 30%
 - CONTACTS: PhBz CuSn 8 (C521) 0.20mm THICK
 - PLATING:
 BATTERY SIDE - 1.34µm MIN Au OVER
 1.27µm MIN Ni
 PCB SIDE - 1.34µm MIN Au OVER
 1.27µm MIN Ni

NOTES:
 1. CONTACT NORMAL FORCE:
 BATTERY SIDE 1.45±0.15N AT 0.8mm DEFLECTION
 PCB SIDE 1.25±0.15N AT 0.8mm DEFLECTION
 2. PACKAGING: CARRIER TUBES SEE
 DWG. PK-94345-002
 S.P.Q.=17,172 PCS
 3. OTHER PRODUCT CHARACTERISTICS
 ACCORDING TO PS-94345-001

STD. DESCR. "BATTERY CONN DOUBLE COMPR R/A 3 CKT"

EC NO: Z2004-0061 DRWN: GZUIN 2004/02/05 CHKD: RSANDANO 2004/02/05 APPR: FBISELLO 2004/02/06	QUALITY SYMBOLS	GENERAL TOLERANCES (UNLESS SPECIFIED)	SCALE 5:1	DESIGN UNITS METRIC	FIRST ANGLE PROJECTION	REVISE ON CAD ONLY													
	▴ = 0 ▽ = 0	<table border="1"> <thead> <tr> <th></th> <th>mm</th> <th>INCH</th> </tr> </thead> <tbody> <tr> <td>4 PLACES</td> <td>± ---</td> <td>± ---</td> </tr> <tr> <td>3 PLACES</td> <td>± ---</td> <td>± ---</td> </tr> <tr> <td>2 PLACES</td> <td>± 0.05</td> <td>± ---</td> </tr> <tr> <td>1 PLACE</td> <td>± 0.10</td> <td>± ---</td> </tr> </tbody> </table>		mm	INCH	4 PLACES	± ---	± ---	3 PLACES	± ---	± ---	2 PLACES	± 0.05	± ---	1 PLACE	± 0.10	± ---	DIMENSION STYLE MM ONLY	TITLE R/A BATTERY CONN. 3CKT (DOUBLE COMPRESSION)
			mm	INCH															
		4 PLACES	± ---	± ---															
3 PLACES	± ---	± ---																	
2 PLACES	± 0.05	± ---																	
1 PLACE	± 0.10	± ---																	
DRAFT WHERE APPLICABLE MUST REMAIN WITHIN DIMENSIONS	DRAWN BY GZUIN DATE 03/11/14 CHECKED BY RSANDANO DATE 03/11/14 APPROVED BY FBISELLO DATE 03/11/14	MATERIAL NO. 94345-0203 DOCUMENT NO. SD-94345-002 SHEET NO. 1 OF 1																	
REV 1	THIS DRAWING CONTAINS INFORMATION THAT IS PROPRIETARY TO MOLEX INCORPORATED AND SHOULD NOT BE USED WITHOUT WRITTEN PERMISSION					A3													