

PART NUMBER	REV	FIRST USED	TERMINATOR	FEED TYPE	DESCRIPTION
1528288-1	D	-	LEADMAKER	MECH POST FEED	CUTS CARRIER
1528288-2	D	-	BENCH	MECH PRE FEED	CUTS CARRIER
1528288-6	D	-	LEADMAKER	MECH POST FEED	CONTINUOUS CARRIER
7-1528288-1	D	-	LEADMAKER	MECH POST FEED	-1 AND SPARE PARTS
7-1528288-2	D	-	BENCH	MECH PRE FEED	-2 AND SPARE PARTS
7-1528288-6	D	-	LEADMAKER	MECH POST FEED	-6 AND SPARE PARTS
7-1528288-7	C	-	-	-	SPARE PARTS KIT

**CRIMP DATA (TE TERMINAL)**  
 TERMINAL NAME: .040 III UNSEALED CONTACT, TAB (S)

CRIMP	SIZE	TYPE	RANGE
WIRE	1.70 [.067 IN]	F	0.3mm <sup>2</sup> - 0.5mm <sup>2</sup>
INSUL	1.57 [.062 IN]	F	1.1-1.7mm [.043-.067 IN]

WIRE STRIP LENGTH 4.00-4.50 [.157-.177 IN] APPL INSTRUCTION 408-8322 & 408-8490

TERMINAL APPL SPEC	FEED
114-5228	9.50 [.374 IN]

**TERMINALS APPLIED**

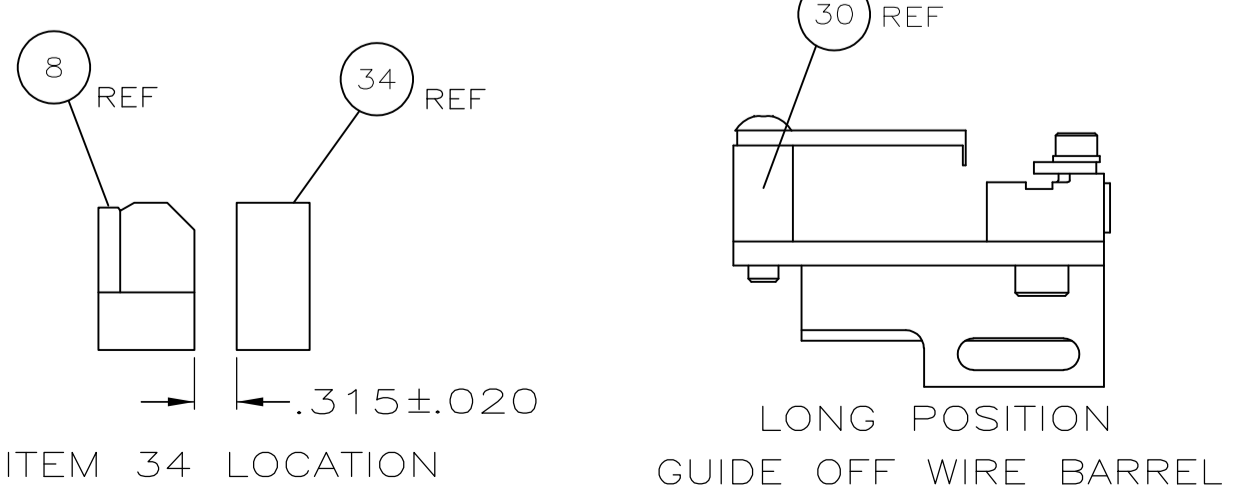
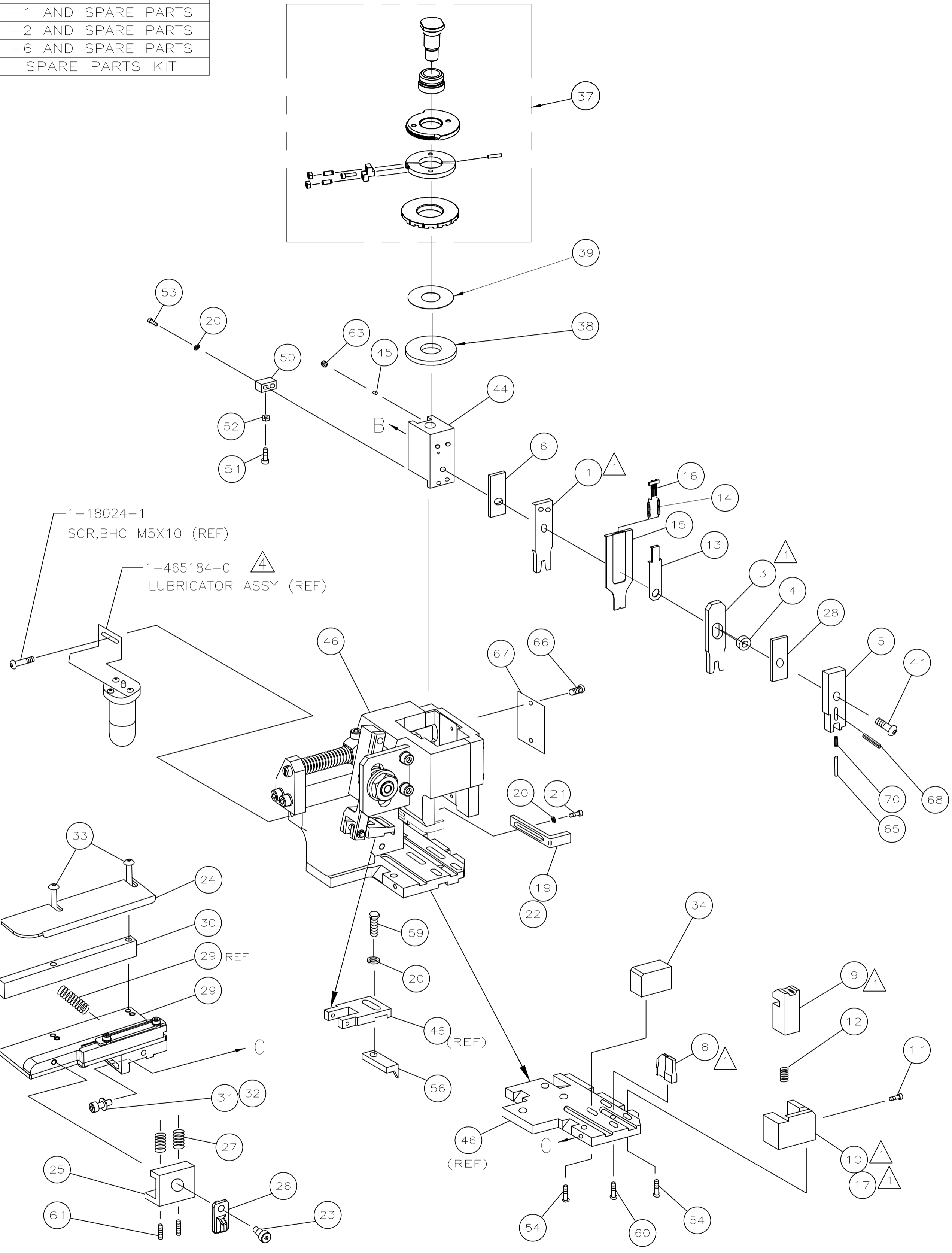
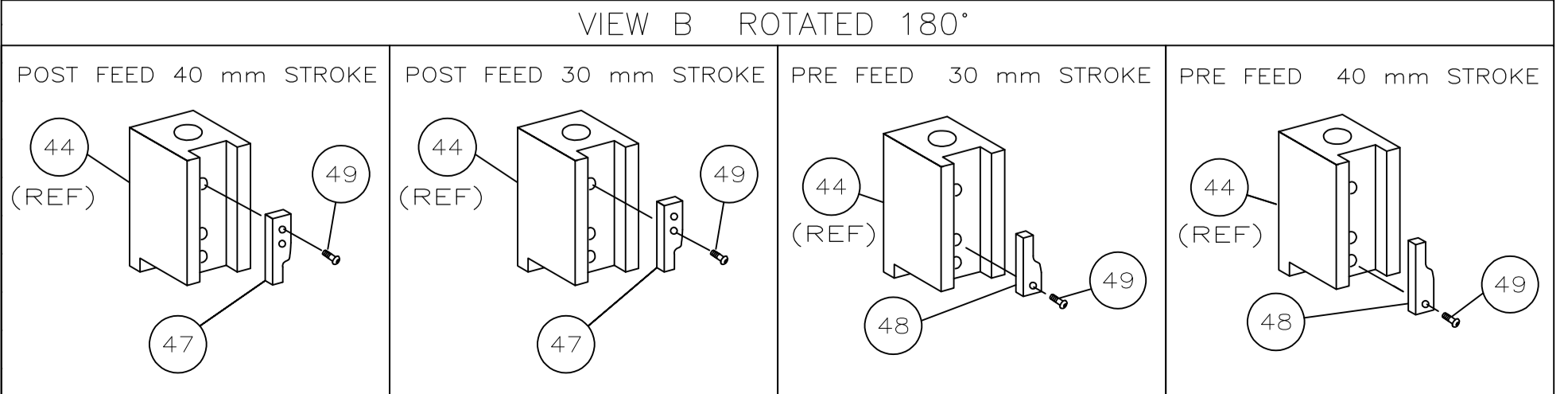
1565963	-	-	-	-	-
-	-	-	-	-	-
-	-	-	-	-	-
-	-	-	-	-	-
-	-	-	-	-	-
-	-	-	-	-	-
-	-	-	-	-	-
-	-	-	-	-	-
-	-	-	-	-	-
-	-	-	-	-	-

WIRE SIZE mm <sup>2</sup> AWG	CRIMP HEIGHT *	REF SETTING
0.50mm <sup>2</sup>	1.23 ±0.05 [.048 ±.002 IN]	B 6
0.30mm <sup>2</sup> / 0.35mm <sup>2</sup>	1.15 ±0.05 [.045 ±.002 IN]	C 1

SET UP GAGE 458637-3 LAYOUT L1426050

- 1 RECOMMENDED SPARE PARTS.
- 2. GREASE RAM, CAM, CAM FOLLOWER AND FEED ROD LIGHTLY.
- 3. LUBRICATE DAILY PER THE APPLICATOR INSTRUCTION SHEET SUPPLIED WITH THE APPLICATOR.
- 4 CERTAIN TERMINALS REQUIRE LUBRICATION. REFER TO THE APPLICATOR INSTRUCTION SHEET FOR MORE INFORMATION.
- 5 SEE APPL SPECIFICATION FOR SPECIFIC WIRE DETAILS.

**\* WARNING:**  
 ON INSTALLATION, SET WIRE DISC TO LARGEST WIRE SIZE SETTING. USE OF SETTINGS BELOW MIN REQ'D CRIMP HEIGHT SETTING WILL CAUSE DAMAGE TO CRIMP TOOLING.



QTY	REQD	PER	ASSY	PART NO	DESCRIPTION	ITEM NO			
-	1	1	1	1	1	1	1528288	PRINT, APPLICATOR LOG SHEET	73
-	1	1	1	1	1	1	1338705-3	DOCUMENTATION PACKAGE	71
-	1	1	1	1	1	1	5-547505-2	SPRING, COMPRESSION	70
-	1	1	1	1	1	1	21028-2	PIN, SLOTTED SPRING	69
-	1	1	1	1	1	1	461264-5	PLATE, IDENTIFICATION	68
-	2	2	2	2	2	2	21017-2	SCR,DRIVE(#2x.19)ID PLATE	66
-	1	1	1	1	1	1	854769-4	HOLDER, INSULATION	65
-	1	1	1	1	1	1	3-18031-0	SCR,SKT SET(M6X6 LW)RAM	64
-	2	2	2	2	2	2	2-18032-5	SCR,SET(M5X20)DRAG	63
-	1	1	1	1	1	1	18024-7	SCR,BHC(M4X10)ANVIL	62
-	1	1	1	1	1	1	5-18022-2	SCR,HEX(M4X8)FEED FINGER	61
-	1	1	1	1	1	1	1338685-1	PAWL, FEED	60
-	4	4	4	4	4	4	18024-8	SCR,BHC(M4x12)SHEAR HOLDER	58
-	2	2	2	2	2	2	1-18023-2	SCR,SHC(M4x12)TERM HLD DWN	57
-	1	1	1	1	1	1	18030-1	NUT,HEX(M3)HOLD DOWN	56
-	1	1	1	1	1	1	811242-5	BUMPER, HOLDDOWN	55
-	1	1	1	1	1	1	690753-2	SPACER, TONKER	54
-	1	1	1	1	1	1	18024-3	SCR,BHC(M3X10)CAM	53
-	-	1	-	-	1	-	1338675-1	CAM, PRE FEED 30 & 40 mm ST	52
-	1	1	1	1	1	1	1338676-1	CAM, POST FEED 30 & 40 mm ST	51
-	1	1	1	1	1	1	1320999-3	APPLICATOR BASIC SUBASSY	50
-	1	1	1	1	1	1	690191-1	PLUG, NYLON	49
-	1	1	1	1	1	1	1338660-1	RAM	48
-	1	1	1	1	1	1	2-18024-6	SCR,BHC(M8X25)RAM	47
-	1	1	1	1	1	1	690125-1	SHIM SUBASSY	46
-	1	1	1	1	1	1	469367-8	SPACER, FINE ADJUST	45
-	1	1	1	1	1	1	879103-3	FINE ADJUST HEAD SUBASSY	44
-	1	1	1	1	1	1	2-1320934-5	SUPPORT, TERMINAL	43
-	2	2	2	2	2	2	1-18024-0	SCR,BHC(M4X20)STRIP GUIDE	42
-	1	1	1	1	1	1	18027-2	WASHER, FLAT(M4)	41
-	1	1	1	1	1	1	1-18023-2	SCR,SKT CAP(M4X12)MOUNT BLOCK	40
-	1	1	1	1	1	1	1320908-4	SPACER, STRIP GUIDE	39
-	1	1	1	1	1	1	1633073-1	STRIP GUIDE PLATE ASSY	38
-	1	1	1	1	1	1	1-455888-0	SPACER, FRONT SHEAR DEP	37
-	2	2	2	2	2	2	1-22284-0	SPRING, DRAG	36
-	1	1	1	1	1	1	356835-1	LEVER, DRAG RELEASE	35
-	1	1	1	1	1	1	240792-1	DRAG, TERMINAL	34
-	1	1	1	1	1	1	1320928-1	PLATE, STRIP GUIDE	33
-	1	1	1	1	1	1	980371-4	SCR,SHC SHLD	32
-	1	-	1	1	-	1	690472-2	STRIPPER	31
-	1	1	1	1	1	1	1-18023-1	SCR,SHC(M4X10)STRIPPER	30
-	4	4	4	4	4	4	18025-2	WASHER,LOCK(M4)STRIPPER	29
-	-	1	-	-	1	-	690472-1	STRIPPER	28
-	1	-	-	1	-	-	1338684-1	HOLDER, SHEAR, FRONT (NO-CUT)	27
-	1	1	1	1	1	-	1424350-1	HOLDER, PIN, WIRED	26
-	1	1	1	1	1	-	1490525-3	DEPRESSOR, WIRE	25
-	2	2	2	2	2	-	2-23147-2	SPRING, DEPRESSOR	24
-	1	1	1	1	1	-	1490524-1	SPACER, DEPRESSOR	23
-	1	1	1	1	1	1	3-22280-3	SPRING, SHEAR	22
-	1	1	1	1	1	1	356885-4	STOP, SHEAR	21
-	-	1	1	-	1	1	1320921-1	HOLDER, SHEAR, FRONT (CUT)	20
-	1	1	1	1	1	1	462006-1	SHEAR, FLOAT (FRONT)	19
1	2	2	2	1	1	1	1333225-1	ANVIL	18
-	1	1	1	1	1	1	455888-2	SPACER, CRIMPER	17
-	1	1	1	1	1	1	854772-1	DEPRESSOR, SHEAR (FRONT)	16
-	1	1	1	1	1	1	238011-8	SPACER, BLOCK CRIMPER	15
1	2	2	2	1	1	1	2-1213077-4	CRIMPER, INSULATION	14
1	2	2	2	1	1	1	937157-1	CRIMPER, WIRE	13
-77	-76	-72	-71	-6	-2	-1			12

THIS DRAWING IS A CONTROLLED DOCUMENT.

DIN L10THOUSE 02FEB04  
 CHK -  
 Tyco Electronics Tyco Electronics Corporation  
 Harrisburg, PA 17105-3608

APVD F BACKHURST 02FEB04 NAME  
 PRODUCT SPEC SIDE FEED HD-I F/ADJ APPL

APPLICATION SPEC  
 SIZE CASE CODE DRAWING NO RESTRICTED TO  
 A1 00779 C=1528288

MATERIAL FINISH WEIGHT CUSTOMER DRAWING SCALE SHEET 1 of 1 REV D