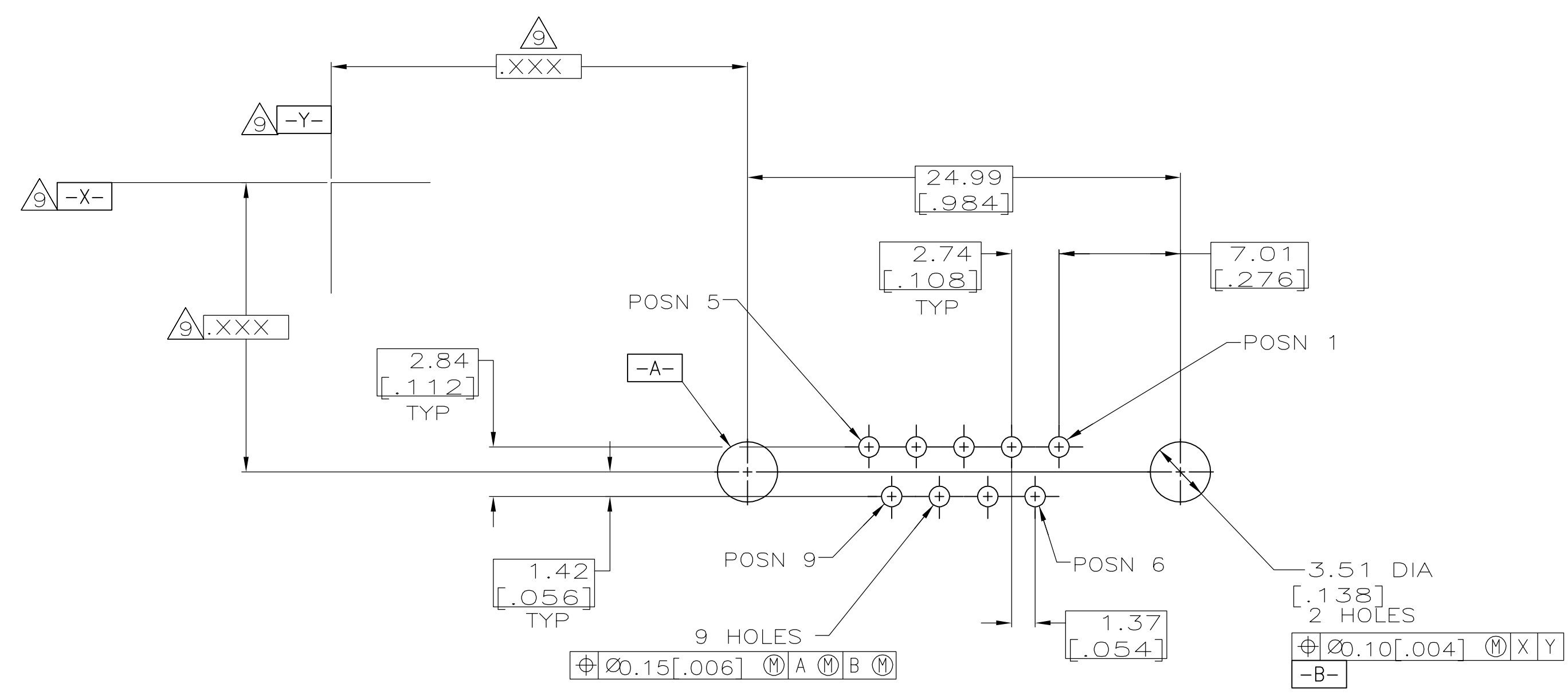
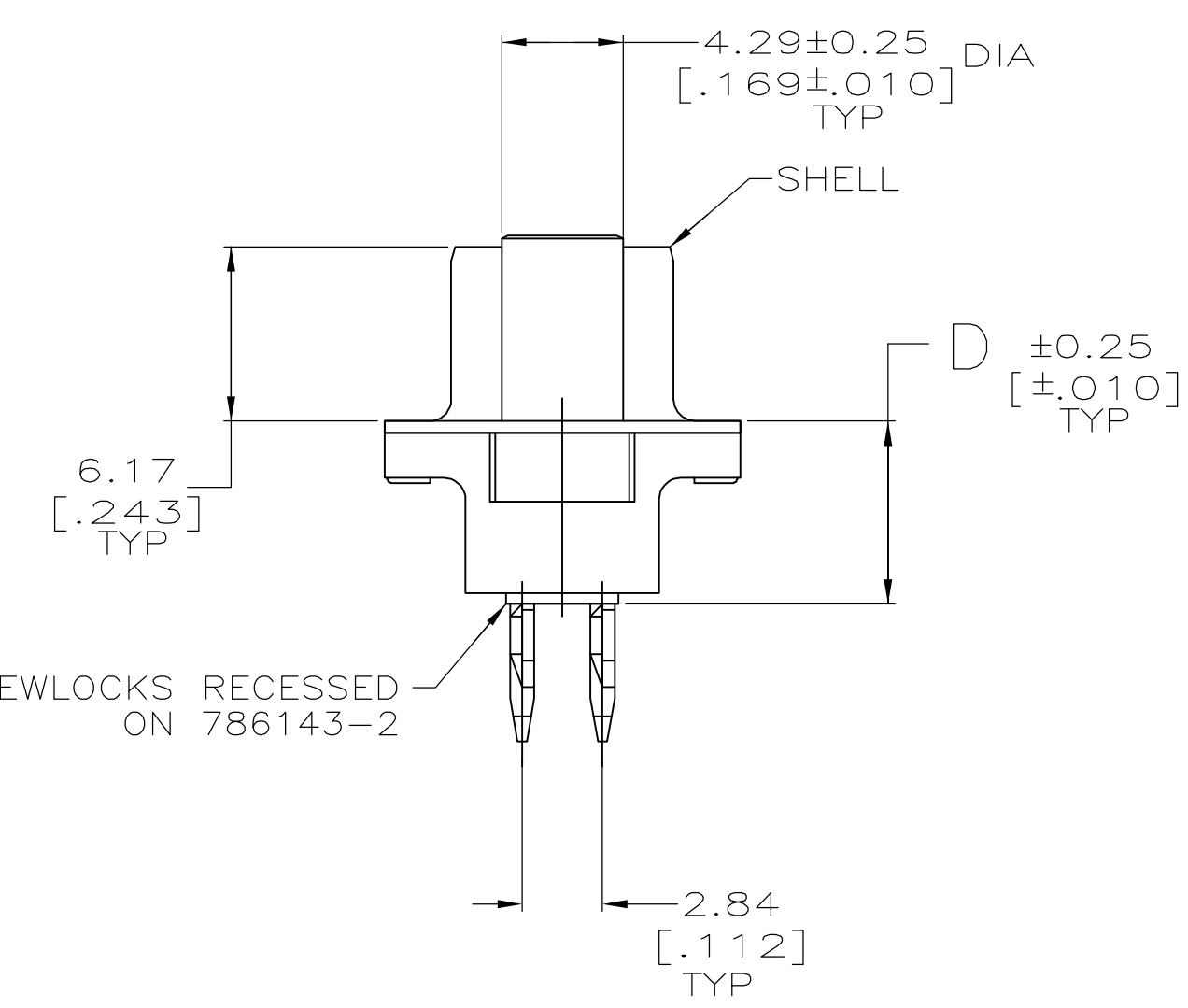
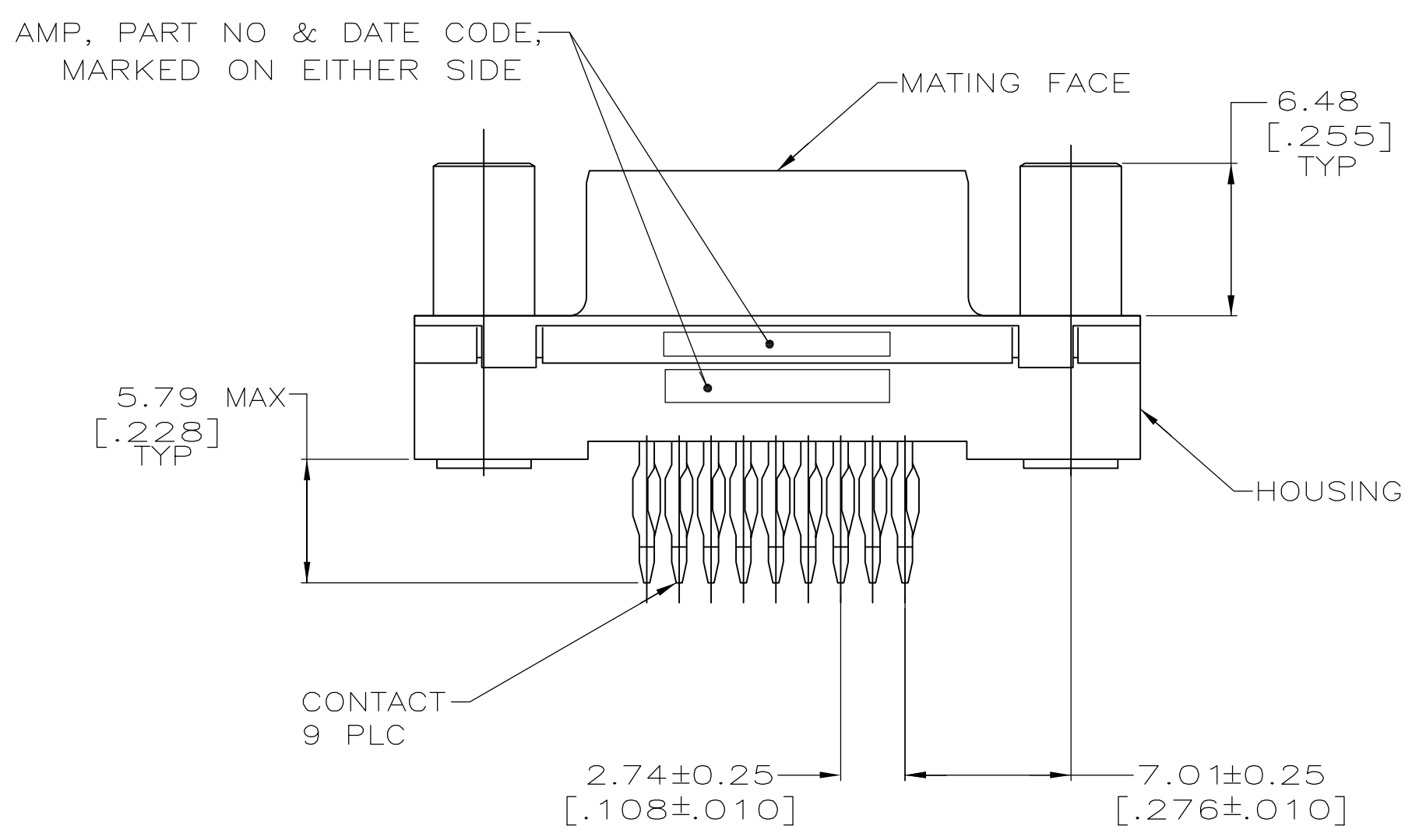


- △1 RECOMMENDATIONS FOR 2.36 [.093] MIN THICK PC BOARD:
  - A. HOLE DIAMETER AFTER DRILLING = 1.14±0.03 [.045±.001].
  - B. HOLE DIAMETER AFTER TIN-LEAD PLATING = 0.94-1.09 [.037-.043].
  - C. HOLE DIAMETER AFTER REFLOW = 0.91-1.09 [.036-.043].
  - D. PC BOARD PLATING TO BE 7.62µm [.000300] MIN TIN-LEAD OVER 0.05±0.03 [.002±.001] COPPER.
- △2 NYLON OR POLYESTER, UL 94V-0 RATED, GLASS FILLED, BLACK.
- △3 COPPER ALLOY.
- △4 CARBON STEEL.
- △5 BRASS.
- △6 OBSOLETE
- △7 SHELL: 5.08 µm [.000200] MIN TIN-LEAD OVER 2.54µm [.000100] MIN COPPER.
- △8 CONTACTS: 0.76 µm [.000030] MIN GOLD FOR A LENGTH OF 1.02 [.040] MIN FROM MATING END, 2.54µm [.000100] MIN TIN OR TIN-LEAD FOR A LENGTH OF 5.79 [.228] MIN FROM OPPOSITE END, BOTH OVER 1.27µm [.000050] MIN NICKEL.
- △9 DATUMS AND BASIC DIMENSIONS ESTABLISHED BY CUSTOMERS.



5.99 [.236]	786143-2
6.48 [.255]	786143-1
D	PART NUMBER

RECOMMENDED PC BOARD MOUNTING DIMENSIONS △1  
 CONNECTOR SIDE OF BOARD

91-4913-8-1-1  
 PART NO

THIS DRAWING IS A CONTROLLED DOCUMENT.		DWG: C. OBERMAN 1-31-92	Tyco Electronics Corporation	
DIMENSIONS: mm [INCHES]		CHK: R. STONE 2-4-92	Harrisburg, PA 17105-3608	
TOLERANCES UNLESS OTHERWISE SPECIFIED:		APVD: -	NAME: RECEPTACLE ASSEMBLY, SIZE 1, 9 POSITION, ACTION PIN, VERTICAL, FRONT METAL SHELL	
0 PLC ± -	1 PLC ± -	PRODUCT SPEC: 108-40014	SIZE: A1	
2 PLC ± 0.13 [.005]	3 PLC ± -	APPLICATION SPEC: -	SCALE: 4:1	
4 PLC ± -	ANGLES ± -	WEIGHT: -	SHEET 1 OF 1	
MATERIAL: -		FINISH: -	REV: E	
CUSTOMER DRAWING		DRAWING NO: 00779		SCALE: 4:1
		DRAWING NO: 786143		SHEET 1 OF 1