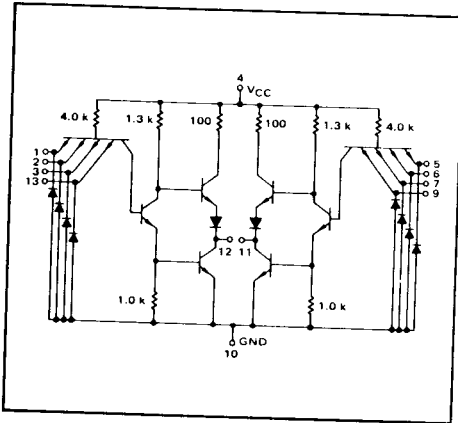


4-64

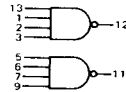
DUAL 4-INPUT "NAND" GATE

MTTL I MC500/400 series

MC500 · MC550  
MC400 · MC450



This device consists of two 4-input NAND gates. The gates can be cross coupled to form a multiple-input R-S flip-flop or a circuit for eliminating contact bounce.



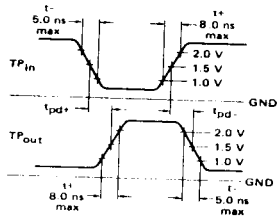
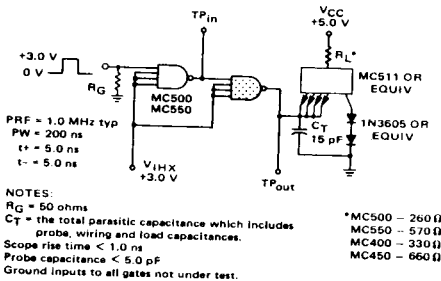
Positive Logic:  
12 =  $\overline{1 \cdot 2 \cdot 3 \cdot 4}$   
Negative Logic:  
12 =  $\overline{1} \cdot \overline{2} \cdot \overline{3} \cdot \overline{4}$

Total Power Dissipation - 30 mW typ/pkg  
Propagation Delay Time - 10 ns typ

| TYPE NO.       | INPUT LOADING FACTOR (I <sub>IF</sub> ) | OUTPUT DRIVE (I <sub>OL</sub> )                                     | TEMPERATURE RANGE |
|----------------|---|---|-------------------|
| MC500<br>MC550 | 1<br>(-1.33 mA)                         | 15 MC500 series Gates<br>7 MC500 series Gates<br>(20 mA)<br>(10 mA) | -55°C to +125°C   |
| MC400<br>MC450 | 1<br>(-1.66 mA)                         | 12 MC400 series Gates<br>6 MC400 series Gates<br>(20 mA)<br>(10 mA) | 0° to +75°C       |

SWITCHING TIME TEST CIRCUIT

VOLTAGE WAVEFORMS AND DEFINITIONS



486

486

