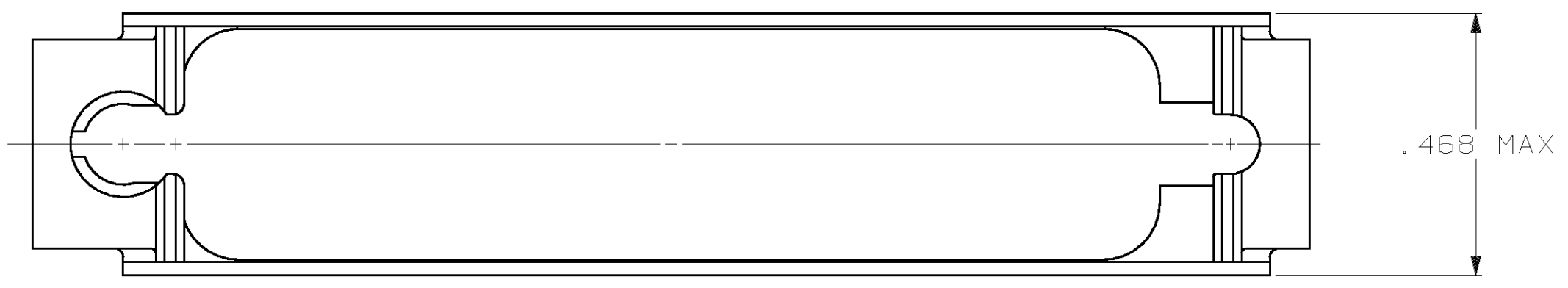
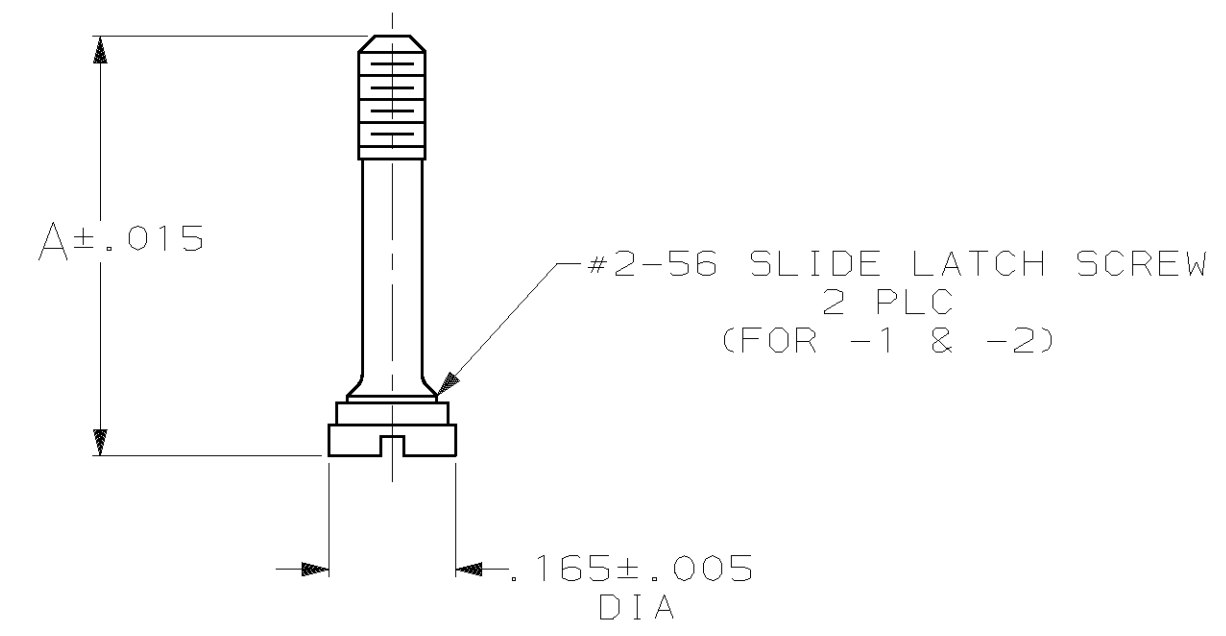
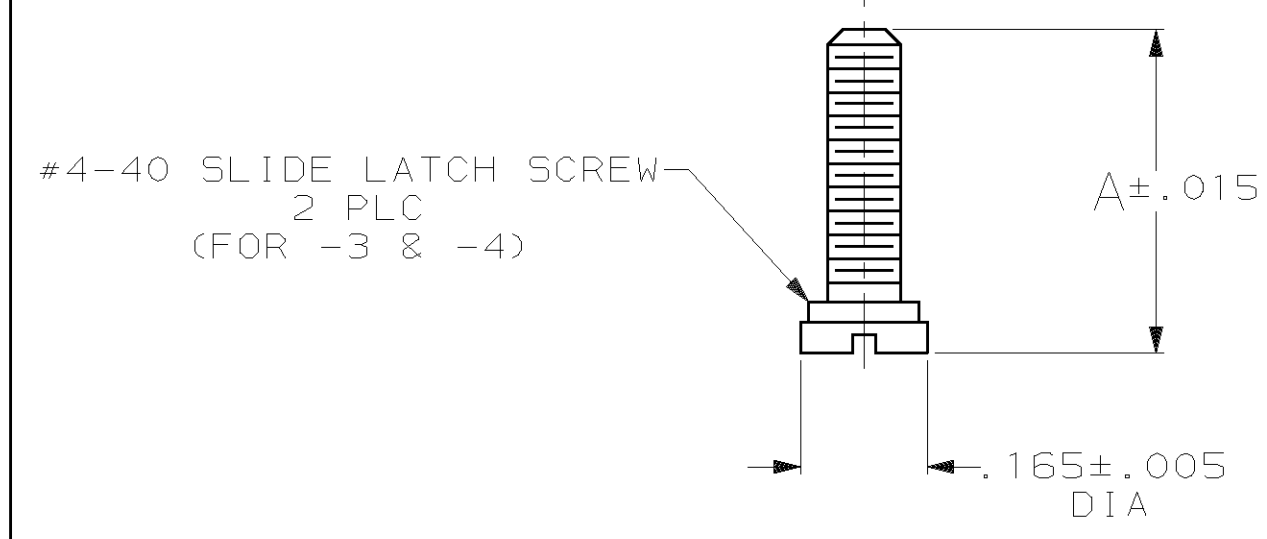
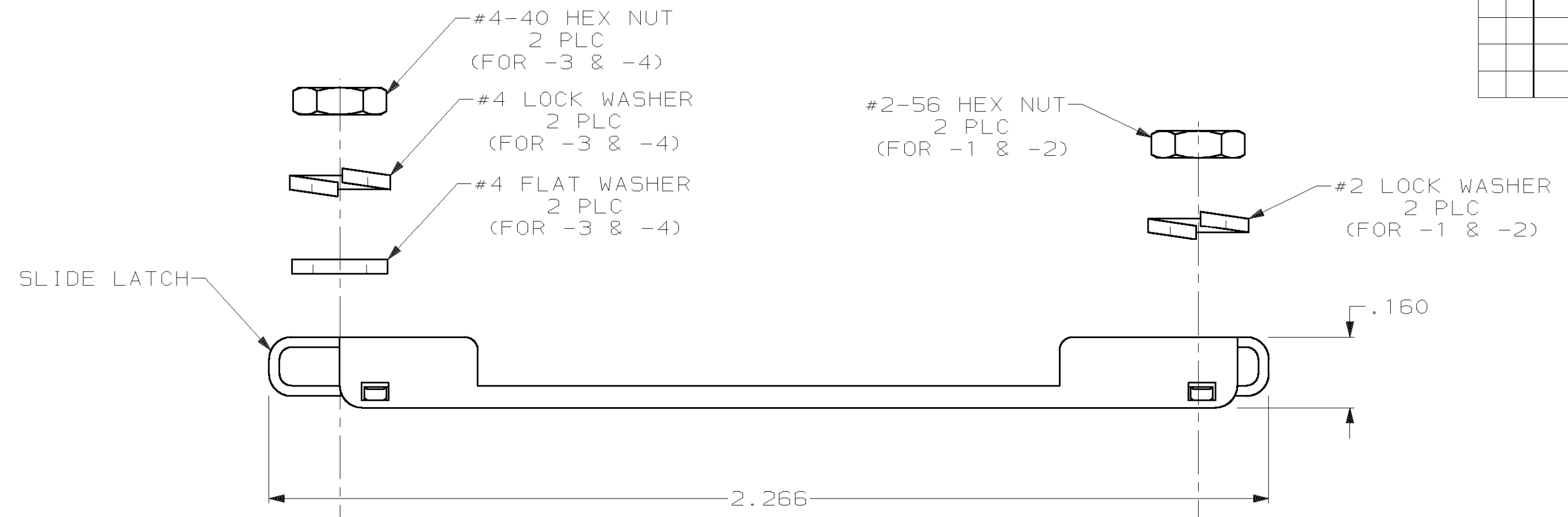


THIS DRAWING IS UNPUBLISHED. RELEASED FOR PUBLICATION, 19 .  
 © COPYRIGHT 19 BY AMP INCORPORATED. ALL INTERNATIONAL RIGHTS RESERVED.

| LOC | DIST | P | F | ZONE | LTR | DESCRIPTION                    | DATE      | APPD |
|-----|------|---|---|------|-----|--------------------------------|-----------|------|
| BD  | 0    |   |   |      | B   | REVISED & REDRAWN PER ECN-2364 | 8-16-88   | JLS  |
|     |      |   |   |      | C   | REVISED PER ECN BD3575         | 02/01/90  | -    |
|     |      |   |   |      | D   | REV PER EC 0020-972-93         | 07/27/93  | SB   |
|     |      |   |   |      | E   | OBS -2 PER EC 0420-145-96      | 16 SEP 97 | SB   |
|     |      |   |   |      | F   | OBS -4 PER EC 0U1D-0251-00     | 02 FEB 01 | DK   |



1. PARTS PACKAGED UNASSEMBLED.
2. PARTS PACKAGED AS A UNIT KIT.
3. PARTS INDIVIDUALLY BULK PACKAGED & SHIPPED AS A UNIT PACKAGE.
4. ZINC PLATED PER ASTM B633, TYPE III, CLASS SCI, CLEAR CHROMATE.
5. ZINC PLATED PER ASTM B633, TYPE II, CLASS SCI, YELLOW CHROMATE.
6. THIS KIT CAN BE USED WITH TWO-PIECE STRAIGHT/90° EXIT CABLE CLAMPS, RFI/EMI CABLE CLAMPS OR UNIVERSAL CABLE CLAMPS.
7. THIS KIT CAN BE USED WITH STRAIGHT/45° EXIT ONE-PIECE CABLE CLAMPS, STRAIGHT/90° EXIT ONE-PIECE CABLE CLAMPS, OR ON CONNECTORS WITHOUT CABLE CLAMPS.

|          |      |   |       |   |   |          |
|----------|------|---|-------|---|---|----------|
| OBSOLETE | .415 | 5 | #4-40 | 3 | 7 | 745584-4 |
|          | .415 | 5 | #4-40 | 2 | 7 | 745584-3 |
| OBSOLETE | .547 | 4 | #2-56 | 3 | 6 | 745584-2 |
|          | .547 | 4 | #2-56 | 2 | 6 | 745584-1 |

|   |  | A                      | HARDWARE FINISH                                   | THREAD TYPE | PACKAGING  | PART NO |
|---|--|------------------------|---|-------------|------------|---------|
| DO NOT SCALE PRINT. UNLESS SPECIFIED DIMENSIONS IN INCHES TOLERANCES ON : |  | DR 8-12-88 L SIPE      | AMP INCORPORATED<br>Harrisburg, Pa. 17105         |             |            |         |
| 2 PLC DEC ± -   |  | CHK 8-12-88 W LENKER   |   |             |            |         |
| 3 PLC DEC ± .010  |  | APPD 8-15-88 R WHYNE   | NAME  |             |            |         |
| ANGLES ± -  |  | APPD 8-16-88 J SHOWERS | KIT, SLIDE LATCH, SIZE 3, 25 POSITION, AMPLIMITE® |             |            |         |
| MATERIAL  |  | PRODUCT SPEC           | SIZE  |             |            |         |
| SLIDE LATCH: STAINLESS STEEL  |  |                        | C   | FSCM NO     | DRAWING NO |         |
| HARDWARE: STEEL PER ASTM A108   |  |                        |   | 00779       | 745584     |         |
| FINISH  |  | APPLICATION SPEC       | SCALE   | SHEET       |            |         |
| HARDWARE: SEE TABLE   |  |                        | 4:1   | 1 OF 1      |            |         |
|   |  | WEIGHT                 |   |             |            |         |