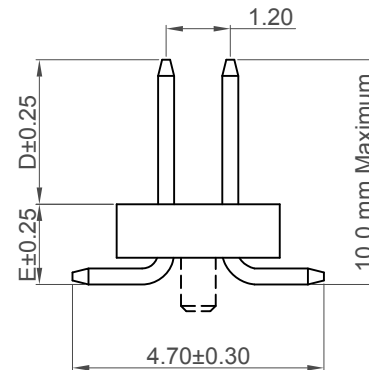
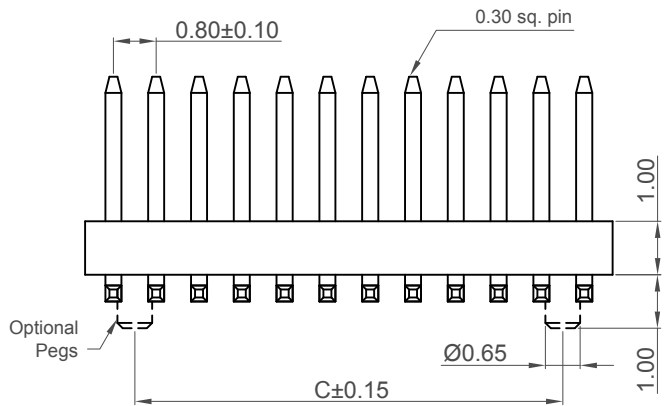
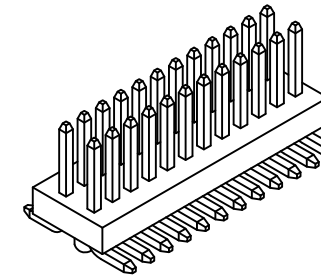


Recommended P.C.B Layout

▨ Solder Area



Specifications

Material

Contact: Phosphor Bronze
 Insulator:
 Standard: Polymer, LCP, UL 94-V0

Electrical

Current Rating: 0.5 Amp per pin
 Insulation Resistance: 500 MΩ min
 Contact Resistance: 20 mΩ max.
 Dielectric Withstand Voltage: AC 200 V

Mechanical & Environmental

Operating Temperature: -40°C to +105°C

Soldering Process

LCP (Standard) -
 IR Reflow: 260°C for 10 sec.
 Wave: 250°C for 5 -10 sec
 Manual Solder: 350°C for 3-5 sec

Mates with (Subject to pin length)
 BB060

Number of Contacts	Dimensions		
	A	B	C
6	1.60	2.66	0.80
8	2.40	3.46	1.60
10	3.20	4.26	2.40
12	4.00	5.06	3.20
14	4.80	5.86	4.00
16	5.60	6.66	4.80
18	6.40	7.46	5.60
20	7.20	8.26	6.40
22	8.00	9.06	7.20
24	8.80	9.86	8.00
26	9.60	10.66	8.80
28	10.40	11.46	9.60
30	11.20	12.26	10.40
32	12.00	13.06	11.20
34	12.80	13.86	12.00
36	13.60	14.66	12.80
38	14.40	15.46	13.60
40	15.20	16.26	14.40
42	16.00	17.06	15.20
44	16.80	17.86	16.00
46	17.60	18.66	16.80
48	18.40	19.46	17.60
50	19.20	20.26	18.40
52	20.00	21.06	19.20
54	20.80	21.86	20.00
56	21.60	22.66	20.80
58	22.40	23.46	21.60
60	23.20	24.26	22.40
62	24.00	25.06	23.20
64	24.80	25.86	24.00
66	25.60	26.66	24.80
68	26.40	27.46	25.60
70	27.20	28.26	26.40
72	28.00	29.06	27.20
74	28.80	29.86	28.00
76	29.60	30.66	28.80
78	30.40	31.46	29.60
80	31.20	32.26	30.40
82	32.00	33.06	31.20
84	32.80	33.86	32.00
86	33.60	34.66	32.80
88	34.40	35.46	33.60
90	35.20	36.26	34.40
92	36.00	37.06	35.20
94	36.80	37.86	36.00
96	37.60	38.66	36.80
98	38.40	39.46	37.60
100	39.20	40.26	38.40

Ordering Grid



No. of Contacts
 06 to 100
 00 = 100

Contact Plating
 A = Gold Flash (Standard)

Locating Peg
 0 = No Peg
 1 = With Peg

Dimension D (1/100mm)
 (Post Height)
0270 = 2.70mm (Standard)
 or specify Dimension D
 e.g. 2.50mm = 0250
 (Minimum 0150 = 1.50mm)
 (Maximum 0800 = 8.00mm)

Packing Options
B = Tape and Reel with Cap (Standard)
 D = Tube (Unavailable in 6 & 8 Contacts)
 E = Tube with Cap (Unavailable in 6 & 8 Contacts)
 G = Box (6 & 8 Contacts only)

Insulator Material
L = LCP (Standard)

Dimension E (1/100mm)
 (Top of Insulator to Bottom of Pin)
0150 = 1.50mm (Standard)
 or specify Dimension E
 e.g. 2.50mm = 0250
 (Minimum 0130 = 1.30mm)

Part Number		Product Description	
BB080		0.8mm x 1.2mm Pitch Pin Header, Dual Row, Surface Mount, Vertical	
Drawing Date		18th September 2009	
By	CC	Tolerances (Except as Noted)	Units:
Detail	BB080 D PCN	Length X ± 0.30 X.X ± 0.25 X.XX ± 0.15 X.XXX ± 0.10	Metric (mm)
Revision	D1	Angle X° ± 5.0° X.X° ± 3.0° X.XX° ± 2.0° X.XXX° ± 1.0°	3rd Angle Projection
Date	17/01/18		



This drawing is confidential and copyright of Global Connector Technology, Ltd (GCT). This drawing must not be copied or disclosed without written consent. E & OE



www.gct.co

Not to Scale	Drawn By AE	Sheet No. 1/1
--------------	----------------	------------------

H
G
F
E
D
C
B
A

1 2 3 4 5 6 7 8