

ITEM	MOLEX P/N	DESCRIPTION	QTY	UOM
A,B	2074580002	L1NK 396 Receptacle Housing -1X2	2	PC
C	2074590002	L1NK 396 TPA -1X2	2	PC
D	455703002	KKGen2 156 Tin/nickel Crimp 18-20 FORMED	4	PC
E	-	LABEL	1	PC

FROM	TO	CABLE DESCRIPTION	COLOR
A1	B2	18AWG PVC BK UL1015 HOOKUP WIRE	BLACK
A2	B1		

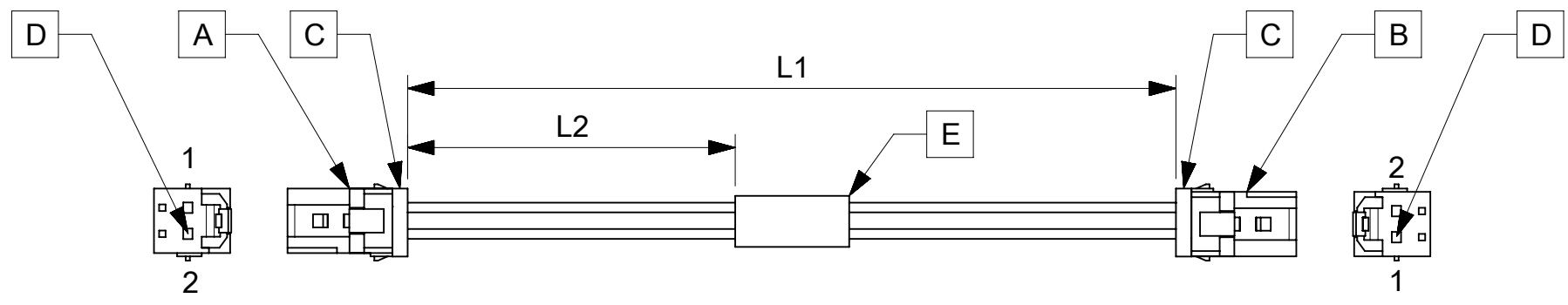


TABLE			
PART NUMBER	L1	L2	TITLE
369210200	75±5	25REF	Link396 2 Circuit 75MM
369210202	150±10	63REF	Link396 2 Circuit 150MM
369210203	300±15	138REF	Link396 2 Circuit 300MM
369210210	1000±20	488REF	Link396 2 Circuit 1000MM

**NOTES**

1. Cable assembly must pass 100% continuity and polarity test.
2. Label text must be 2mm max. In height with Arial font.
3. Connector view shown is from mating side.

P/N:36921XXXX — MOLEX PN  
 MOLEX  
 BATCH WK/YR

DATE	REV	DESCRIPTION	REVISED BY
2019.03.27	A	INITIAL RELEASE	SSHIVASHANKA

<b>SYMBOLS</b> DIMENSION UNITS: mm SCALE: NTS GENERAL TOLERANCES (UNLESS SPECIFIED) ANGULAR TOL ± ° 4 PLACES ± 3 PLACES ± 2 PLACES ± 1 PLACE ± 0 PLACES ± DRAFT WHERE APPLICABLE MUST REMAIN WITHIN DIMENSIONS THIRD ANGLE PROJECTION DRAWING SERIES: A4-SIZE 36921	THIS DRAWING CONTAINS INFORMATION THAT IS PROPRIETARY TO MOLEX ELECTRONIC TECHNOLOGIES, LLC AND SHOULD NOT BE USED WITHOUT WRITTEN PERMISSION CURRENT REV DESC: EC NO: 616867 DRWN: SSHIVASHANKA 2019/03/27 CHK'D: MNARAYAN01 2019/05/08 APPR: MNARAYAN01 2019/05/08 INITIAL REVISION: DRWN: SSHIVASHANKA 2019/03/27 APPR: MNARAYAN01 2019/05/08				
	SEE TABLE				
	PRODUCT CUSTOMER DRAWING				
	DOCUMENT NUMBER	DOC TYPE	DOC PART	REVISION	
369210200	PSD	000	A		
MATERIAL NUMBER	CUSTOMER	SHEET NUMBER			
SEE TABLE	GENERAL MARKET	1 OF 1			