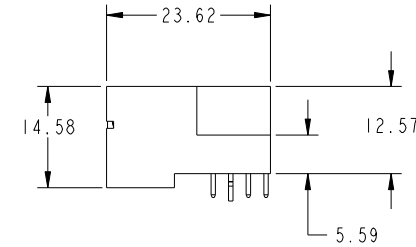
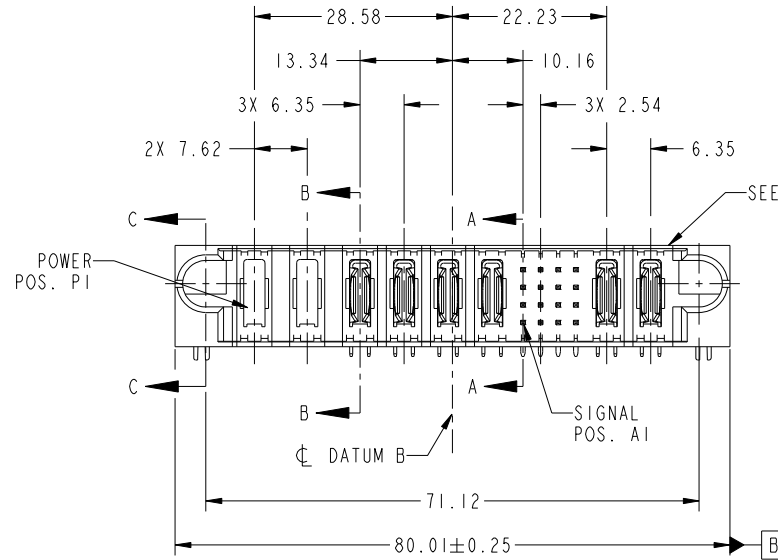
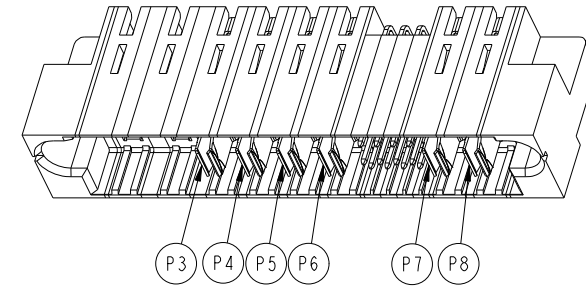


Tous droits strictement reserves. Reproduction ou communication a des tiers interdite sous quelque forme que ce soit sans autorisation écrite du propriétaire. Propriete de c FCI. Droits de reproduction FCI.



All rights strictly reserved. Reproduction or issue to third parties in any form whatever is not permitted without written authority from the proprietor. Property of FCI. Copyright FCI.

PRODUCT NO.	ROWS	POWER								SIGNAL				POWER	
		E1	P1	P2	P3	P4	P5	P6	1	2	3	4	P7	P8	E2
51939-443... NOTE 3	D C B A	HA	X	X	PA	PA	PA	PA	H G S E	H G S E	H G S E	H G S E	PA	PA	HA



CODE	DIM "M" MATING LENGTH	DIM "W" MIN WIPE LENGTH	CONTACT TYPE
S	6.86	3.86	SIGNAL
PA	N/A	N/A	POWER
HA	N/A		HOLD-DOWN
G	5.59	2.59	SIGNAL
H	5.59	2.59	SIGNAL
E	5.59	2.59	SIGNAL
X	OMITTED		

mat'l code				SEE NOTE		tolerances unless otherwise specified		CUSTOMER	
ltr	ecn no.	dr	date	linear	0.X ±0.5	projection	FCI		
A	DG09-0171	WD	06/02/09	angles	0.XX ±0.25	0.XXX ±0.10	www.fciconnect.com		
				dr	0° ±2°	0° ±2°	title 6P + 16S + 2P RIGHT ANGLE SOLDER HEADER		
				enr	Warren Du	06/02/09	product family PwrBlade code 213		
				chr	Warren Du	06/02/09	size dwg no 51939-443 sheet 1 of 4		
				appd	Gary Hsieh	06/02/09	scale 1:1		
					JOSEPH HSIA	06/02/09	cage code 22526		
sheet index	revision sheet	A 1	A 2	A 3	A 4				

CONFIDENTIAL

www.fciconnect.com

title 6P + 16S + 2P
RIGHT ANGLE SOLDER HEADER

product family PwrBlade code 213

size dwg no 51939-443 sheet 1 of 4

scale 1:1

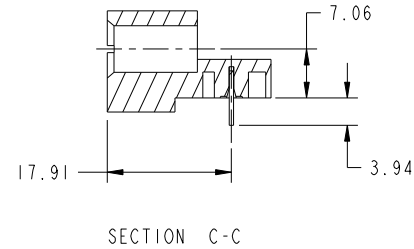
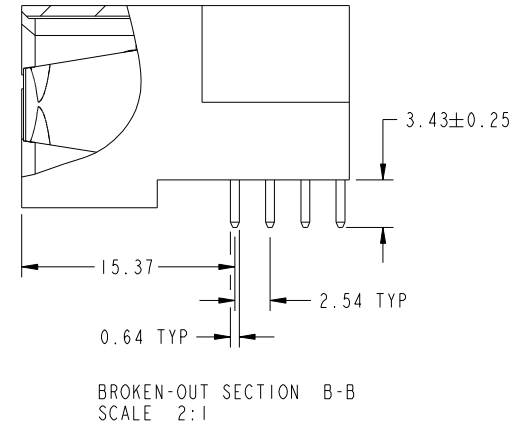
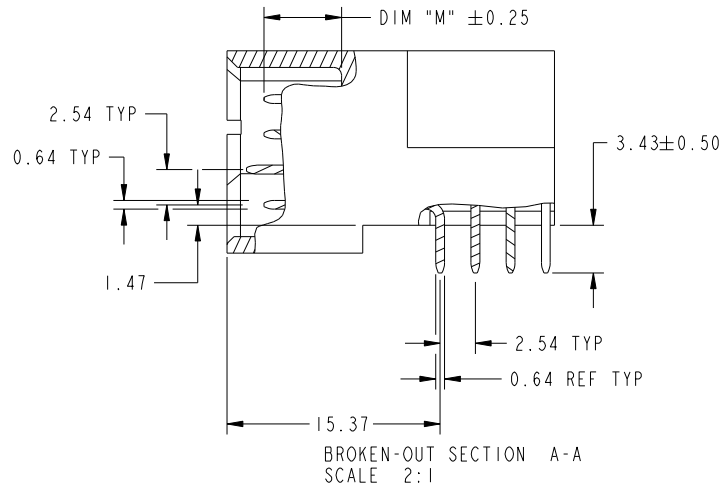
cage code 22526

Tous droits strictement reserves. Reproduction ou communication a des tiers interdite sous quelque forme que ce soit sans autorisation écrite du propriétaire. Propriete de c FCI. Droits de reproduction FCI.

All rights strictly reserved. Reproduction or issue to third parties in any form whatever is not permitted without written authority from the proprietor. Property of FCI. Copyright FCI.



PRODUCT NUMBER
51939-443_
NOTE: 3



CONFIDENTIAL

mat'l code				SEE NOTE		tolerances unless otherwise specified		CUSTOMER		FCI	
ltr	ecn no.	dr	date	linear	0.X ±0.3	COPY		projection		www.fciconnect.com	
A					0.XX ±0.13	MIM		title		6P + 16S + 2P	
				angles	0.XXX ±0.051	1:1		RIGHT ANGLE SOLDER HEADER		product family PwrBlade code 213	
				dr	Warren Du 06/02/09	scale		size		sheet 2 of 4	
				enr	Warren Du 06/02/09	A		dwg no		51939-443	
				chr	Gary Hsieh 06/02/09			A		2 of 4	
				appd	JOSEPH HSIA 06/02/09						
sheet index	revision sheet										

cage code 22526

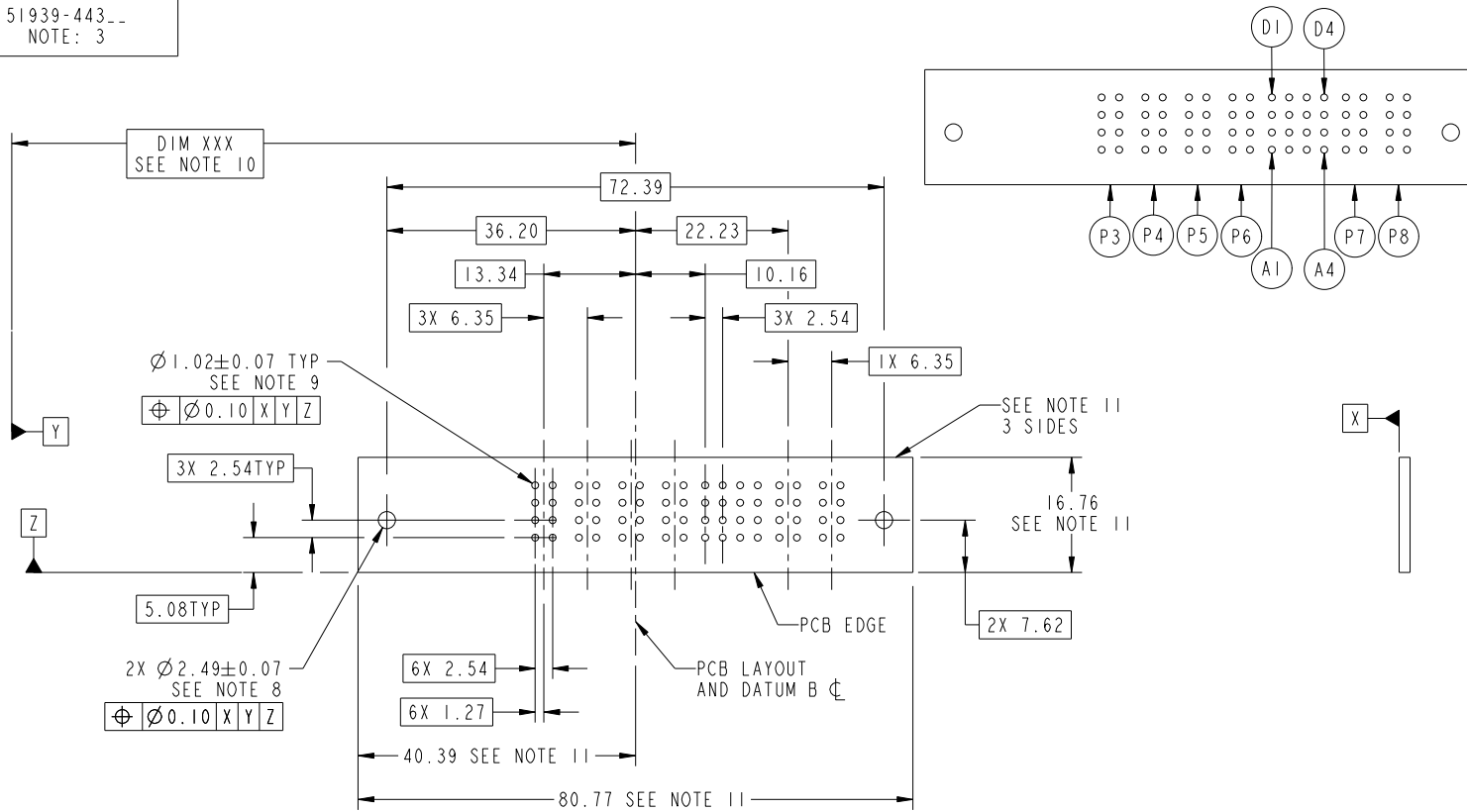
Pro/E

Tous droits strictement reserves. Reproduction ou communication a des tiers interdite sous quelque forme que ce soit sans autorisation ecrite du proprietaire. Propriete de c FCI. Droits de reproduction FCI.



All rights strictly reserved. Reproduction or issue to third parties in any form whatever is not permitted without written authority from the proprietor. Property of FCI. Copyright FCI.

PRODUCT NUMBER
51939-443__
NOTE: 3



RECOMMENDED PCB LAYOUT

CONFIDENTIAL

mat'l code				SEE NOTE		tolerances unless otherwise specified		CUSTOMER		FCI	
ltr	ecn no.	dr	date	linear	0.X ±0.3	COPY		projection		www.fciconnect.com	
A					0.XX ±0.13	MIM		title		6P + 16S + 2P	
				angles	0.XXX ±0.051	← MIM →		RIGHT ANGLE SOLDER HEADER		product family PwrBlade code 213	
				dr	Warren Du 06/02/09	scale		size		dwg no 51939-443 sheet 3 of 4	
				enr	Warren Du 06/02/09	1:1		A			
				chr	Gary Hsieh 06/02/09						
				app	JOSEPH HSIA 06/02/09						
sheet index	revision sheet										

cage code 22526

Pro/E

Tous droits strictement reserves. Reproduction ou communication a des tiers interdite sous quelque forme que ce soit sans autorisation écrite du propriétaire. Propriete de c FCI. Droits de reproduction FCI.

All rights strictly reserved. Reproduction or issue to third parties in any form whatever is not permitted without written authority from the proprietor. Property of FCI. Copyright FCI.



PRODUCT NUMBER
51939-443_
NOTE: 3

NOTES:

1. DIMENSIONS AND TOLERANCES ARE IN ACCORDANCE WITH ASME Y14.5M, 1994 UNLESS OTHERWISE SPECIFIED.

CONNECTOR NOTES:

- 2. HOUSING MATERIAL: UL 94 V-0 GLASS FILLED HIGH-TEMP THERMOPLASTIC
POWER CONTACT MATERIAL: COPPER ALLOY
SIGNAL PIN MATERIAL: COPPER ALLOY
 - 3. SEE ITEM 1 & 2 IN PRINT 10064183 FOR PLATING SPEC OF 51939-443; 51939-443LF PRESPECTIVELY
 - 4. MANUFACTURER'S NAME, P/N, AND DATE CODE TO APPEAR ON THIS SURFACE.
 - 5. PRODUCT SPECIFICATION GS-12-149.
APPLICATION SPECIFICATION BUS-20-067.
 - 6. PACKAGED IN TRAYS.
- PCB NOTES:
- 7. ALL HOLE DIAMETERS ARE FINISHED HOLE SIZE.

- 8. MOUNTING HOLES, WHERE APPLICABLE, ARE UNPLATED.
- 9. $\varnothing 1.151 \pm 0.025$ DRILLED HOLES PLATED WITH
0.008 MIN SnPb OR Sn OVER 0.03
TO 0.08 Cu PLATING TO ACHIEVE
 $\varnothing 1.02 \pm .07$ HOLE.
- 10. "DIM XXX" TO BE DETERMINED BY THE CUSTOMER.
- 11. CONNECTOR KEEP-OUT ZONE.

CONFIDENTIAL

mat'l code				SEE NOTE		tolerances unless otherwise specified		CUSTOMER		FCI		www.fciconnect.com	
ltr	ecn no.	dr	date	linear	0.X ± 0.3	projection	COPY		title				
A					0.XX ± 0.13			6P + 16S + 2P RIGHT ANGLE SOLDER HEADER					
				angles	0.XXX ± 0.051			product family		PwrBlade		code	
				dr	Warren Du 06/02/09	scale		size		dwg no		213	
				enr	Warren Du 06/02/09	1:1		A		51939-443		sheet	
				chr	Gary Hsieh 06/02/09							4 of 4	
				appd	JOSEPH HSIA 06/02/09								
sheet index		revision sheet											

cage code 22526

Pro/E