



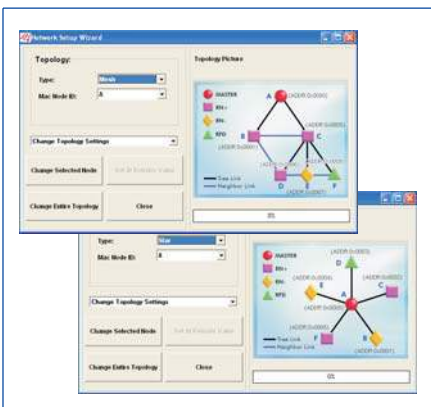
## Accelerate Wireless Product Development

### Simplify System Development & Accelerate Time to Market

Helicomm's 8051-based EZ-Net DevKit 1220PA (EZDK 1220PA) provides everything you need to program and configure IP-Link Modules, connect them to sensor, device and instrument outputs and to build, test and monitor ZigBee-based wireless networks. By using the combination of standard high performance 8051-based IP-Link Modules and the **EZDK 1220PA**, you can accelerate wireless product development six months or more.



Helicomm's EZDK 1220PA contains everything you need to quickly and easily integrate Wireless mesh networking.



Reconfigure your network automatically over-the-air in one of 13 pre-configured topologies.

### High Performance Networking Solution

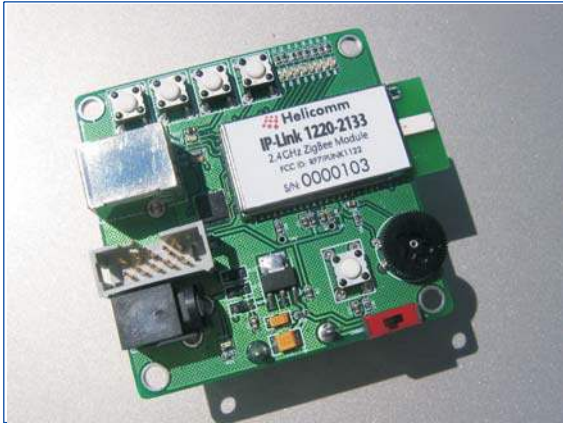
The **EZDK 1220PA** comes in IEEE 802.15.4-compliant 2.4GHz versions to support global deployment and a data rate of 250Kbps. Powered with PA and high performance 8051-based microcontrollers, **EZDK 1220PA** allows you to take advantage of high-efficiency

- IEE802.15.4-Compliant
- Powerful Development Environment
- Simple Network Planning
- Seamlessly RS232 Data Integration
- Long Transmit Range
- Scalable Network Support
- High Performance 8051 Microcontroller
- Compact Design

networking testing over the wider range, and provides you a flexible way to evaluate mesh networking concepts and quickly demonstrate wireless product prototype.

### Out-of-the-Box ZigBee Networking

Use your **EZDK 1220PA** to implement and test both simple and sophisticated networks of IP-Link Modules. Helicomm's WIN-View Software lets you individually program Modules, build Networks and view Network Summary Tables. Test your Network's robustness by inducing link breakages using the blacklisting function and observing resultant Network behavior. Link and Network level reliability test and monitoring functions let you evaluate Network reliability over time. The power that the **EZDK 1220PA** gives you to rapidly build and test Module and Network configurations translates to save time and money and reduce your development risk.



2.4GHz IP-Link 1220PA Development Board

## What's Included

**EZDK 1220PA** provides a highly integrated rapid prototyping platform that puts you on the fast track to wireless connectivity and IEEE802.15.4-compatible networking. You can easily expand your wireless network by adding more IP-Link modules.

- (6) PC Interface Boards with integral IP-Link 1220PA
- WIN-View Networking Management Software
- Complete documentation including Module API specifications, networking examples and tutorials
- All required cables and power supplies

Helicomm's **EZDK 1220PA** is now shipping and is priced at \$2,500.

## EZ-Net DevKit 1220PA Specifications

Microcontroller	F121
Flash	128KB
RAM	8KB
RF	<ul style="list-style-type: none"> <li>Frequency 2.4GHz</li> <li>Max data rate 250Kbps</li> <li>Receive Sensitivity -94dBm</li> <li>Transmit range (LoS) 400m</li> <li>RF channels 16 (5MHz)</li> <li>Transmit power -9dBm to +15dBm</li> <li>Data encryption 128-AES support</li> <li>Antenna Chip</li> </ul>
Power Consumption -Module	
Transmit @50MHz	55mA + 45mA
Receive @50MHz	55mA + 45mA
Sleep	16uA
I/O	
Serial Connectivity	JTAG, RS232
Power Input	USB Interface
Power Output	120/240V, 50/60Hz
Battery	9V
Environmental	
Dimensions - inches	W x H x D
Without Battery Box	2.75 x 2.5 x 0.75
With Battery Box	2.75 x 2.5 x 1.5
Operating temp.	-20° C to +70° C
Humidity	10% to 90%
Software & Documentation	
OS compatibility	Windows 2000, XP
Key functions	<ul style="list-style-type: none"> <li>• Module provisioning</li> <li>• RF channel &amp; power selection</li> <li>• Device configuration (Coordinator, RN+, RN, -RFD)</li> <li>• Sensor data display &amp; logging</li> <li>• AT or RS-232 mesh selection</li> <li>• Network configuration</li> <li>• Network management</li> </ul>