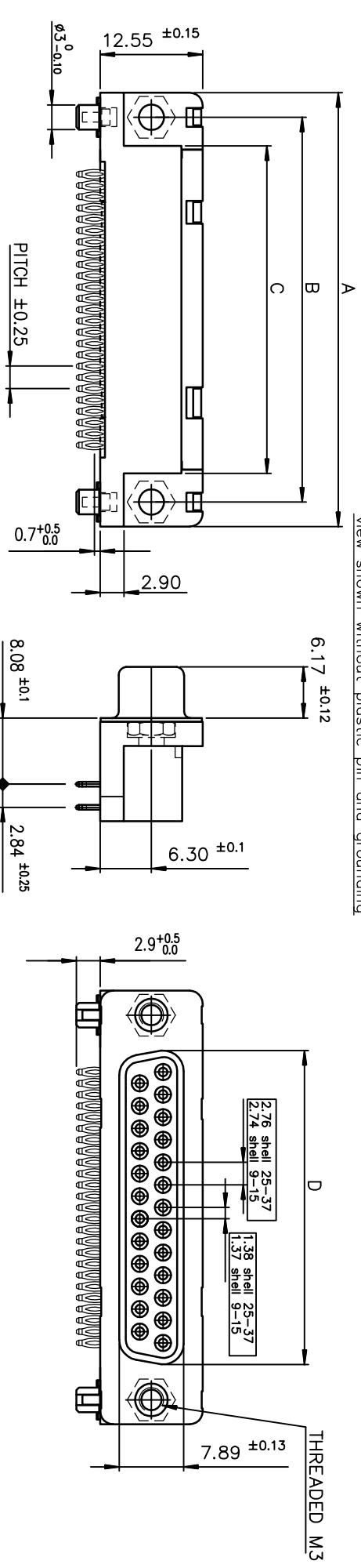
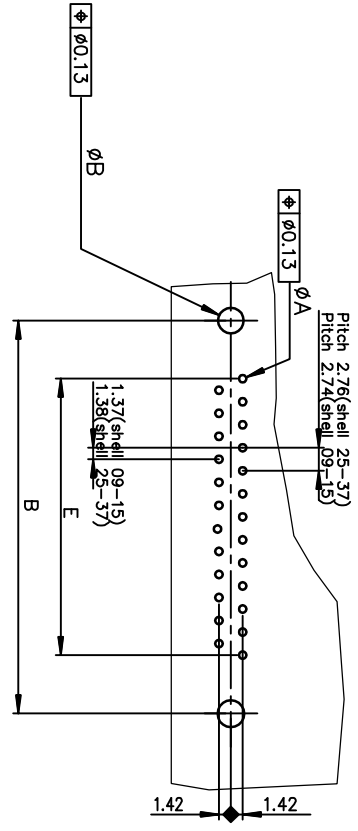


View shown without plastic pin and grounding

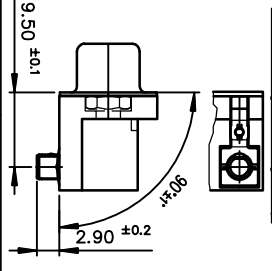


PC cord drilling dimensions(after plating)
(thickness 1.60 ±0.25 mm)



| SHELL | A±0.38 | B±0.12 | C±0.10 | D±0.25 | E±0.07 | TIN LEAD PART NUMBER | TIN LEAD PART NUMBER | LEAD FREE PART NUMBER | LEAD FREE PART NUMBER |
|-------|--------|--------|--------|--------|--------|----------------------|----------------------|-----------------------|-----------------------|
| 09 | 30.81 | 24.99 | 18.00 | 16.21 | 10.96 | D09S80C4G1.00 | D09S80C6G1.00 | D09S80C4G1.00LF | D09S80C6G1.00LF |
| 15 | 39.14 | 33.32 | 26.32 | 24.34 | 19.18 | D15S80C4G1.00 | D15S80C6G1.00 | D15S80C4G1.00LF | D15S80C6G1.00LF |
| 25 | 53.03 | 47.04 | 40.04 | 38.25 | 33.12 | D25S80C4G1.00 | D25S80C6G1.00 | D25S80C4G1.00LF | D25S80C6G1.00LF |
| 37 | 69.32 | 63.50 | 56.50 | 54.71 | 49.68 | D37S80C4G1.00 | D37S80C6G1.00 | D37S80C4G1.00LF | D37S80C6G1.00LF |

Detail of grounding strip



GENERAL CHARACTERISTICS AND ROHS INFORMATIONS:
SEE DRAWING C01-8646-0001

| mat'l. code | ISO 1302 | tolerance | ISO 406 | ISO 1001 | projection | product family |
|--------------------------|--------------|--------------|------------|---------------------------------------|------------|----------------|
| | ISO 1302 | tolerance | ISO 406 | ISO 1001 | projection | D-SUB |
| litr | ecn no | dr | date | tolerances unless otherwise specified | angles | linear |
| G | EX-1-17899 | MP | 2014/06/06 | 0.05±0.1 | 0°±2° | 0.00±0.1 |
| dr | PERSON | (1995/10/30) | | scale 2:1 | | |
| engr | WITTHUN PAUL | (2014/06/06) | | | | |
| chr | ALAS BABU | (2014/06/06) | | | | |
| appd | BIJU K PAUL | (2014/06/06) | | | | |
| sheet | revision | G | | | | |
| index | sheet | 1 | | | | |
| dwg no | sheet 1 of 1 | size | | | | |
| C01-8646-0411 | A3 | | | | | |
| Product Customer Drawing | | | | | | |