

Rear panel feed-through - RC-0000000Q0FZ - 1592924


Please be informed that the data shown in this PDF Document is generated from our Online Catalog. Please find the complete data in the user's documentation. Our General Terms of Use for Downloads are valid (<http://download.phoenixcontact.com>)



Rear panel feed-through, straight, Screw locking, M23, Axial O-ring, 4xM2.5, Shielded: Yes, Panel thickness max.: 6.5 mm, Cable cross section: 2 mm...10.5 mm



Key commercial data

Packing unit	1 PCE
GTIN	 4 046356 193443
Custom tariff number	85366990
Country of origin	GERMANY

Technical data

Technical data

Note	Order information Order contact inserts and cable clamping/shield accessories separately
Ambient temperature	-20 °C ... 125 °C
Type of locking	Screw locking
Degree of protection	IP67
Contact connection method	Crimp connection
Type of contacts	Socket
Conductor entry	2 mm ... 10.5 mm
Mounting type	4xM2.5

Material data

Housing material	Turned parts: copper zinc alloy (CuZn), die-cast parts: zinc (GD-Zn)
Gasket and O-ring material	FPM

Specifications according to DIN EN 61984:2001

Rear panel feed-through - RC-0000000Q0FZ - 1592924

Technical data

Specifications according to DIN EN 61984:2001

Installation height max.	2000 m
--------------------------	--------

Classifications

ETIM

ETIM 3.0	EC001121
ETIM 4.0	EC001121
ETIM 5.0	EC001121

UNSPSC

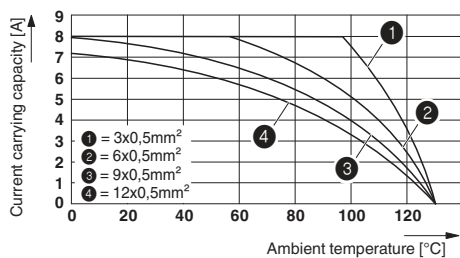
UNSPSC 11	43172015
UNSPSC 12.01	43201404
UNSPSC 13.2	43201404
UNSPSC 6.01	43172015
UNSPSC 7.0901	43201404

eCl@ss

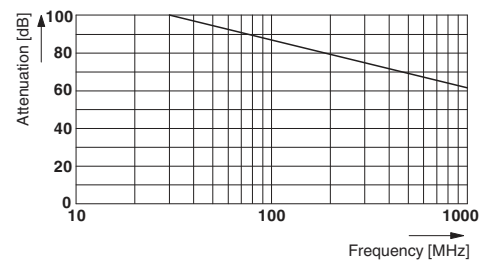
eCl@ss 4.0	272607xx
eCl@ss 4.1	27260701
eCl@ss 5.0	27260701
eCl@ss 5.1	27260701
eCl@ss 6.0	27260708
eCl@ss 7.0	27440312

Drawings

Diagram

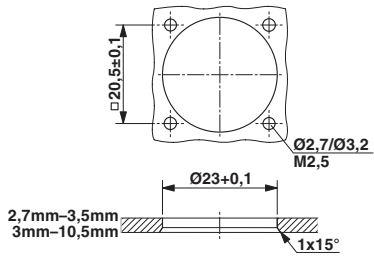


Diagram

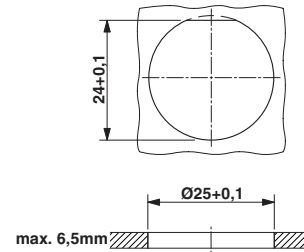


Rear panel feed-through - RC-0000000Q0FZ - 1592924

Dimensioned drawing



Dimensioned drawing



Dimensioned drawing

