

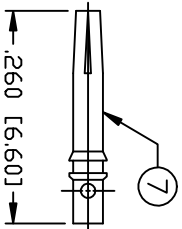
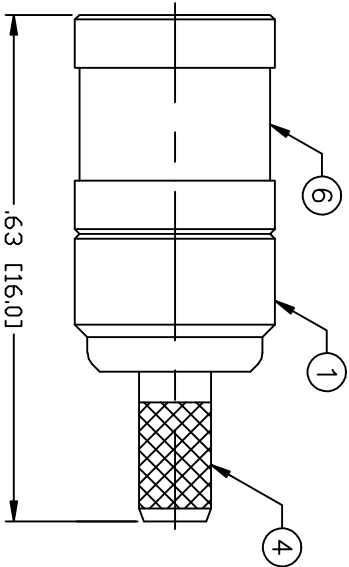
THIS DRAWING CONTAINS INFORMATION PROPRIETARY TO RF INDUSTRIES,
 ANY UNAUTHORIZED USE OF THIS DRAWING IS EXPRESSLY PROHIBITED.
 WITHOUT WRITTEN PERMISSION FROM RF INDUSTRIES,
 ANY VIOLATION IS PUNISHABLE UNDER U.S. COPYRIGHT LAWS.

ALL DIMENSIONS ARE REFERENCE ONLY

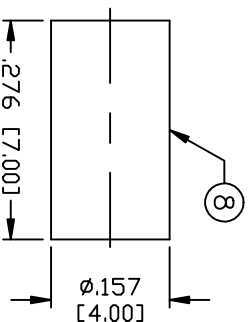
PART NO.

RSB-4000-B-03

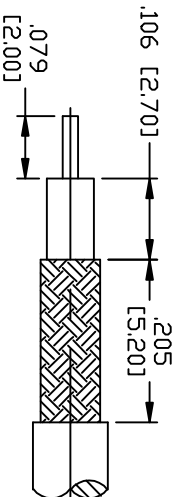
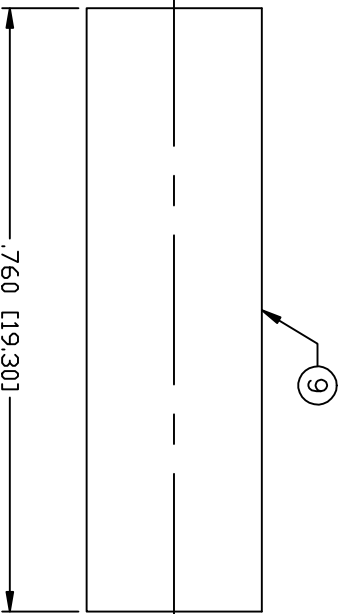
REV	DESCRIPTION	DWN	DATE	APPROVED
-	ENGINEERING RELEASE	CZS	4/19/01	JDMc
A	REMOVED CRIMP PIN NOTE	JDM	2010	JDMc



PIN TO BE SOLDER



RECOMMENDED CRIMP DIE: .130



RECOMMENDED STRIPPING DIM'S

SPECIFICATIONS:

IMPEDANCE: 50 OHMS
 FOR RG-174, 188, 188A, 316/U, ALPHA 9174, 9316,
 BELDEN 8216, 83269, 83284, 84316 & TIMES LMR-100A CABLE

UNLESS OTHERWISE SPECIFIED:

1. REMOVE ALL BURRS
2. BREAK ALL CORNERS & EDGES .005 R. MAX.
3. CHAMFER 1ST & LAST THREADS 45°
4. SURFACE ROUGHNESS 63 FINISH MIL-STD-10
5. DIAMETERS ON COMMON CENTERS TO BE CONCENTRIC WITHIN .002 T.I.R.
6. ALL DIMENSIONS ARE AFTER PLATING.

DIMENSIONS ARE IN INCHES
 AND [MILLIMETERS]
 UNLESS OTHERWISE NOTED
 TOLERANCES ARE:
 DECIMALS .XXX±.003 [.08]
 .XXX±.005 [.13]
 DIAMETER .XXX±.001 [.03]
 .XXX±.003 [.08]

#	DESCRIPTION	QTY	MATRL	FINISH	APPROVALS	DATE
1	BODY	1	BRASS	NICKEL, 100 MICRO	008974	
2	INSULATOR	1	PTFE	---		
3	INSULATOR	1	PTFE	---		
4	FERRULE STUD	1	BRASS	NICKEL, 100 MICRO		
5	RETAINING RING	1	Be. Cu.	---		
6	SHELL	1	BRASS	NICKEL, 100 MICRO		
7	CONTACT	1	Be. Cu.	GOLD, 30 MICRO		
8	FERRULE	1	COPPER	NICKEL, 100 MICRO		
9	TUBING	1	SHRINK	---		
10						
11						
12						
13						
14						

RF Connectors
 DIVISION OF RF INDUSTRIES, LTD.

SMB PLUG, CRIMP

7610 MIRAMAR RD
 SAN DIEGO, CA 92126
 (858) 549-6340
 (858) 549-6345 FAX

SIZE	CABLE GROUP	DWG. NO.	REV
A	B	RSB-4000-B-03	A
SCALE:	NTS	CAD FILE	OUTLINE
		SHEET	1 OF 1