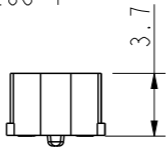
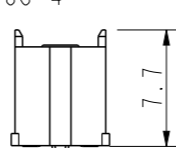
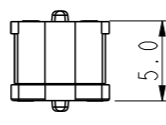
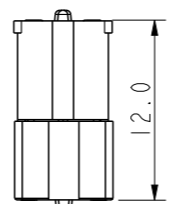


PRODUCT NO.
SEE TABLE

10147613-AA B C D E LF

| AA | POSITION |
|----|----------|
| 04 | 2X20 |
| 06 | 2X30 |
| 08 | 2X40 |
| 10 | 2X50 |
| 12 | 2X60 |
| 14 | 2X70 |
| 16 | 2x80 |
| 18 | 2x90 |

NOTE 5

| B | FOR PLUG SEE DRAWING 10147614 | |
|-----------------------------|--|---|
| COMBINATION OF MATED HEIGHT | PLUG 1 | PLUG 4 |
| RECEP 1 |  |  |
| RECEP 2 |  |  |

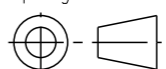

| E | PACKAGING |
|---|---------------------|
| 0 | TUBE WITHOUT CAP |
| 6 | T&R WITH KAPTON CAP |

| D | POLARIZATION PEG |
|---|------------------|
| 0 | YES |
| 1 | NO |

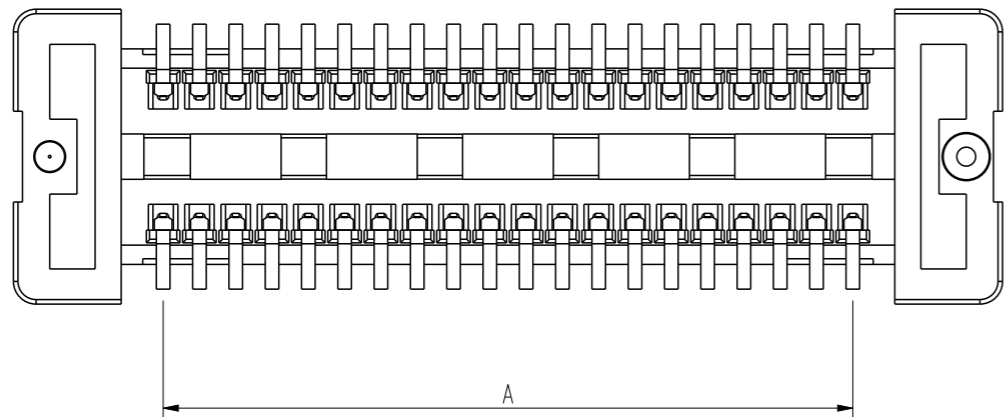
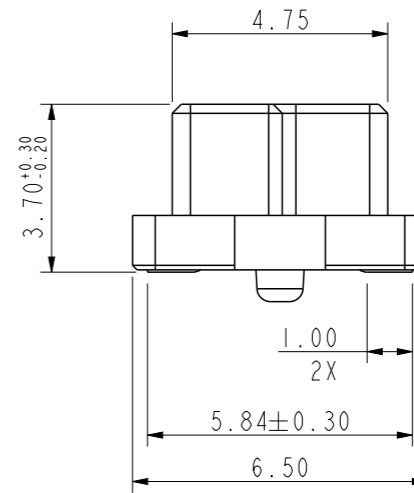
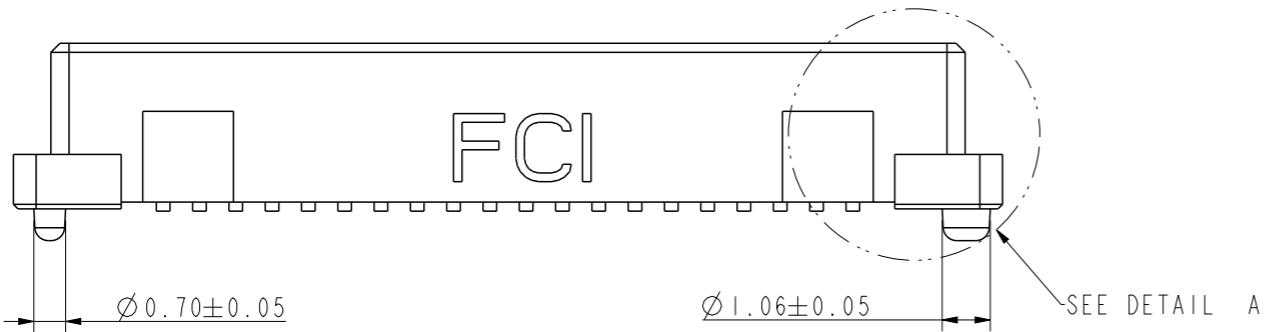
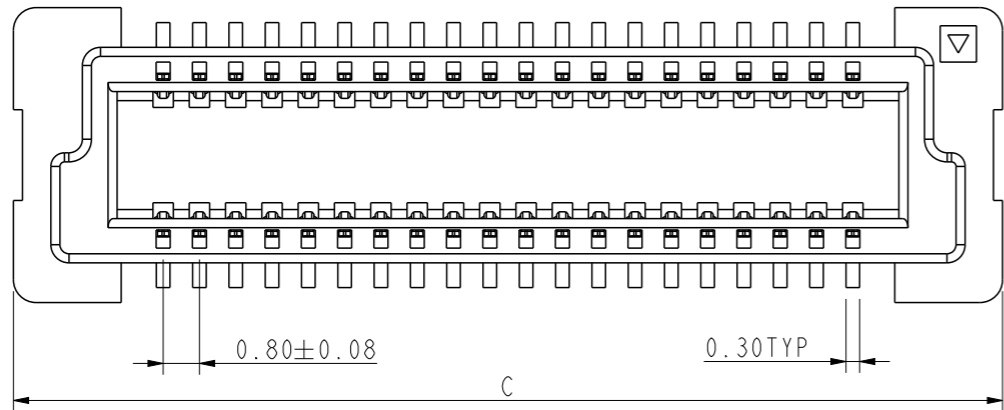
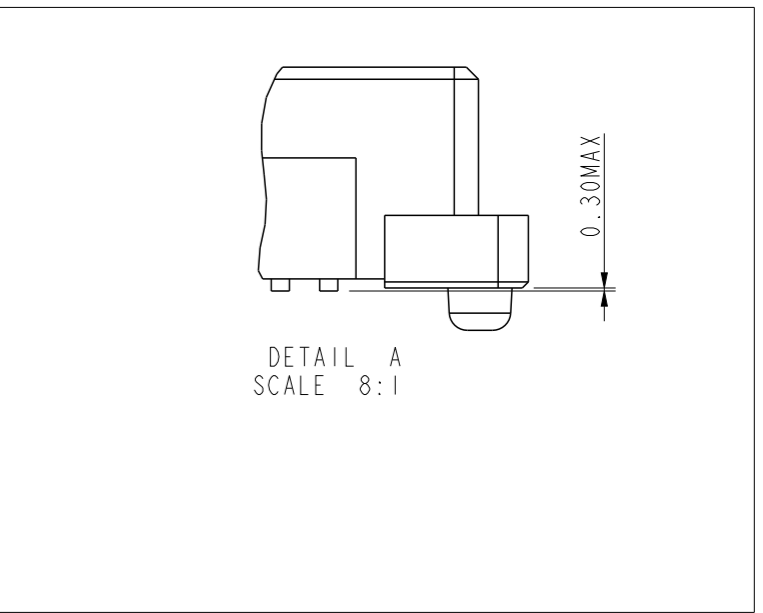
| C | PLATING ON CONTACT AREA / ON SOLDER TAIL AREA |
|---|---|
| 4 | GOLD 0.2umMIN. ON CONTACT AREA PURE TIN 2.5um MIN(LEAD FREE) ON SOLDER TAIL NICKEL UNDERPLATE OVERALL 1.27um MIN |
| 5 | GOLD 0.38umMIN. ON CONTACT AREA PURE TIN 2.5um MIN(LEAD FREE) ON SOLDER TAIL NICKEL UNDERPLATE OVERALL 1.27um MIN |
| 6 | GOLD OR GXT 0.76umMIN ON CONTACT AREA PURE TIN 2.5um MIN(LEAD FREE) ON SOLDER TAIL NICKEL UNDERPLATE OVERALL 1.27um MIN |

NOTE:

- MATERIAL:
HOUSING: HIGH TEMPERATURE RESIN,NATURAL, UL94-V0
TERMINAL: COPPER ALLOY
- PLATING:
AS SHOWN IN TABLE.
- SEE GS-12-1499 FOR PRODUCT SPEC.
- THE HOUSING WILL WITHSTAND EXPOSURE UP TO 260°C PEAK TEMPERATURE FOR 30 SECONDS IN A CONVECTION, INFRA-RED OR VAPOR PHASE REFLOW OVEN.
- ONLY 120POS PRODUCT IS AVAILABLE.

| | | | | | | | | | | |
|---------------|---------------------|------|---------|------------|---------------------|---|-----------|------------------------|-----------|----------|
| spec ref | - | dr | Bob Gu | 2019/12/31 | projection |  | size | A3 | scale | 3:1 |
| tolerance std | ISO 406 ISO 1101 | eng | Alan Ni | 2023/01/30 | mm |  | ecn no | ELX-N-47124-1 | rel level | Released |
| surface | linear | chr | - | - | product family | - | rel level | Released | dwg no | 10147613 |
| ISO 1302 | angular | appr | Tim Yao | 2023/02/03 | RECEPTACLE ASSEMBLY | cat. no. | - | Product - Customer Drw | rev | D |
| | | | | | BERGSTAK HS 0.8MM | | | sheet 1 of 4 | | |

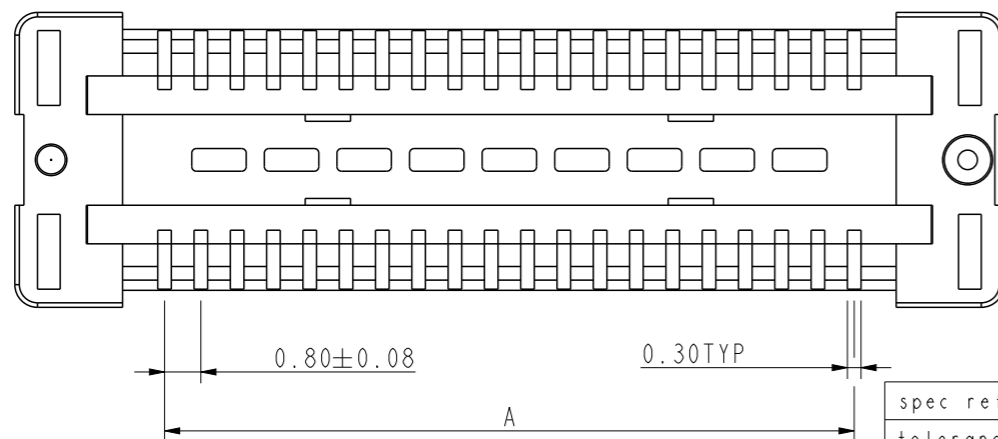
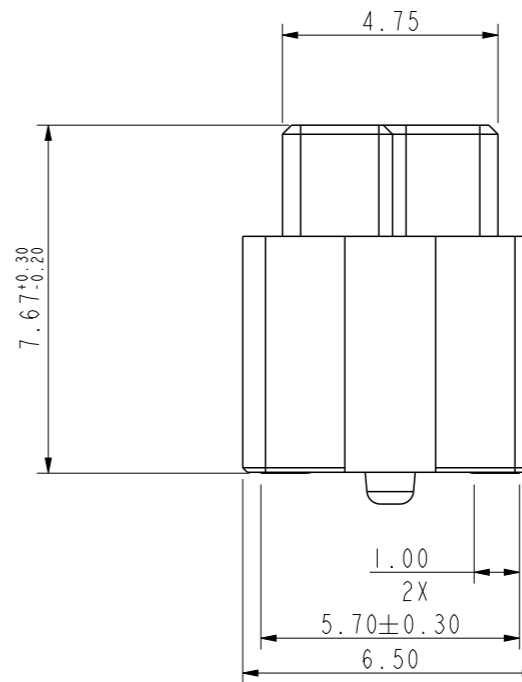
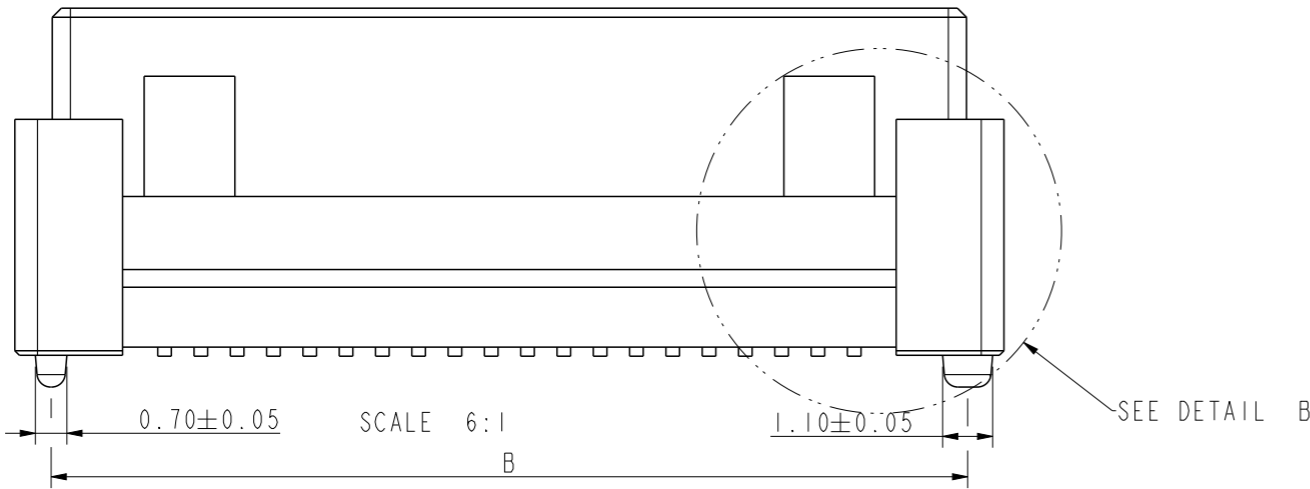
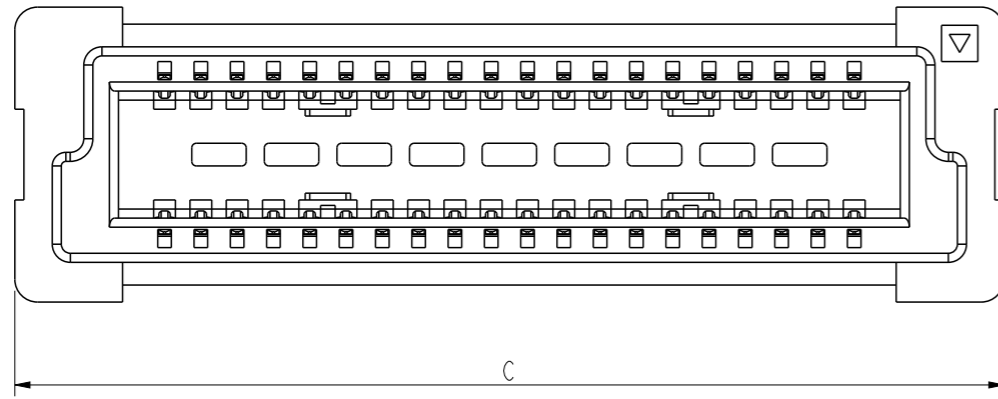
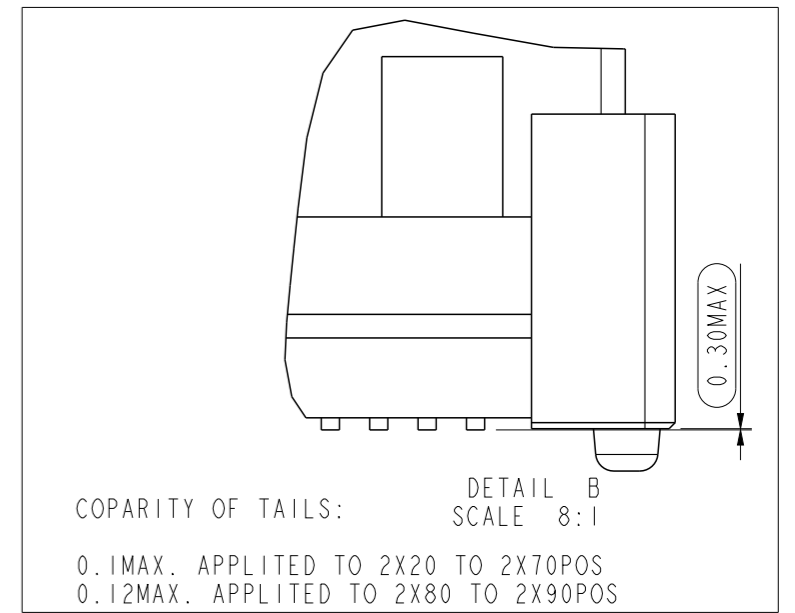
| PRODUCT NO. | NO. OF POSITION | DEMENSION | | |
|--------------------|-----------------|-----------|-------|-------|
| | | A | B | C |
| 10147613-041*0**LF | 2X20 | 15.20 | 20.20 | 21.80 |
| 10147613-061*0**LF | 2X30 | 23.20 | 28.20 | 29.80 |
| 10147613-081*0**LF | 2X40 | 31.20 | 36.20 | 37.80 |
| 10147613-101*0**LF | 2X50 | 39.20 | 44.20 | 45.80 |
| 10147613-121*0**LF | 2X60 | 47.20 | 52.20 | 53.80 |
| 10147613-141*0**LF | 2X70 | 55.20 | 60.20 | 61.80 |
| 10147613-161*0**LF | 2x80 | 63.20 | 68.20 | 69.80 |
| 10147613-181*0**LF | 2x90 | 71.20 | 76.20 | 77.80 |



BERGSTAK HS RECEPI

| | | | | | | | | | | |
|---------------------------------------|---------------------|-----|---------|---------------------|------------|--|----------------|--------------------|-----------|----------|
| spec ref | - | dr | Bob Gu | 2019/12/31 | projection | mm | size | A3 | scale | 2:1 |
| tolerance std | ISO 406 ISO 1101 | eng | Alan Ni | 2023/01/30 | | | ecn no | ELX-N-47124-1 | rel level | Released |
| TOLERANCES UNLESS OTHERWISE SPECIFIED | | chr | - | - | | | product family | | | |
| surface | linear | 0.X | ±0.3 | Amphenol FCI | | RECEPTACLE ASSEMBLY BERGSTAK HS 0.8MM | | dwg no 10147613 | rev D | |
| | angular | 0° | ±2° | | | | | | | cat. no. |
| ISO 1302 | | | | | | | | | | |

| PRODUCT NO. | NO. OF POSITION | DEMENSION | | |
|--------------------|-----------------|-----------|-------|-------|
| | | A | B | C |
| 10147613-042*0**LF | 2X20 | 15.20 | 20.20 | 21.80 |
| 10147613-062*0**LF | 2X30 | 23.20 | 28.20 | 29.80 |
| 10147613-082*0**LF | 2X40 | 31.20 | 36.20 | 37.80 |
| 10147613-102*0**LF | 2X50 | 39.20 | 44.20 | 45.80 |
| 10147613-122*0**LF | 2X60 | 47.20 | 52.20 | 53.80 |
| 10147613-142*0**LF | 2X70 | 55.20 | 60.20 | 61.80 |

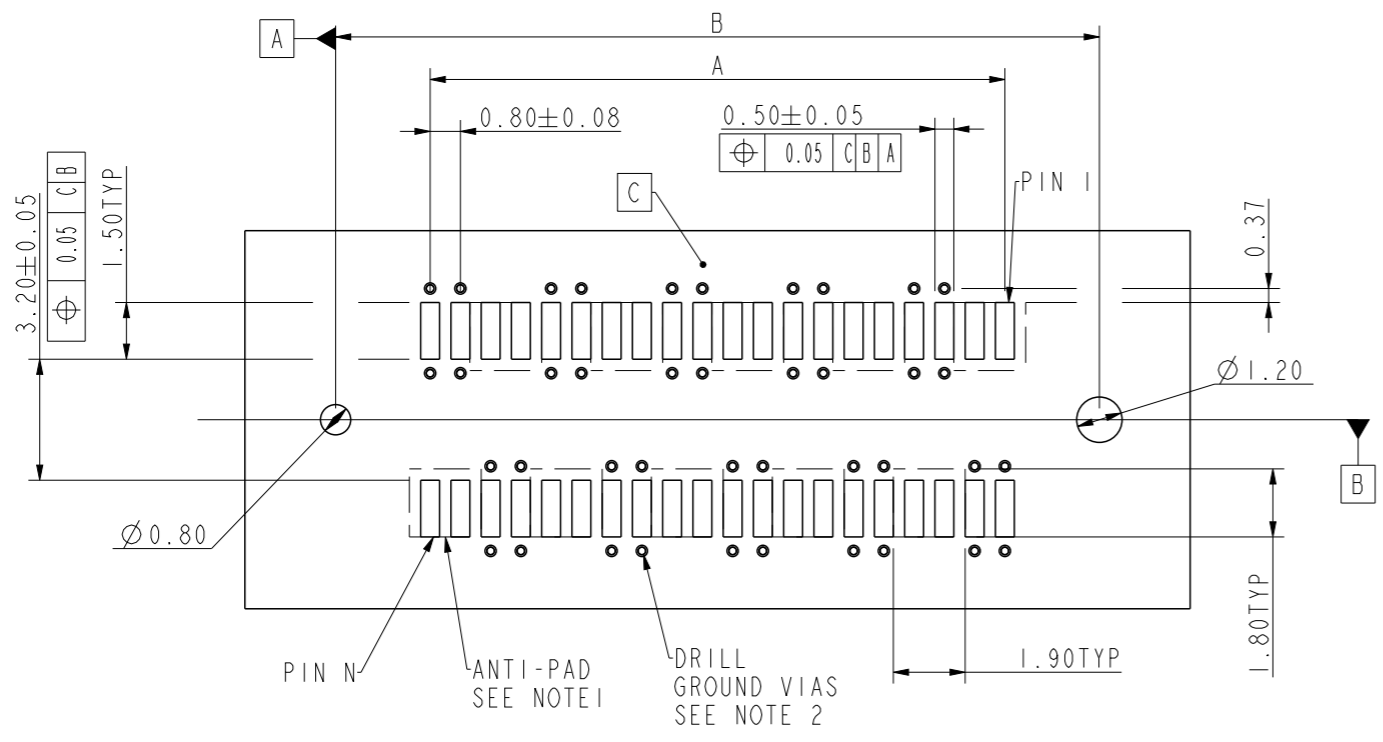


| | | | | |
|---------------|---------------------------------------|------|---------|------------|
| spec ref | - | dr | Bob Gu | 2019/12/31 |
| tolerance std | ISO 406 ISO 1101 | eng | Alan Ni | 2023/01/30 |
| | TOLERANCES UNLESS OTHERWISE SPECIFIED | chr | - | - |
| surface | linear | appr | Tim Yao | 2023/02/03 |
| | angular | | | |
| | | | | |

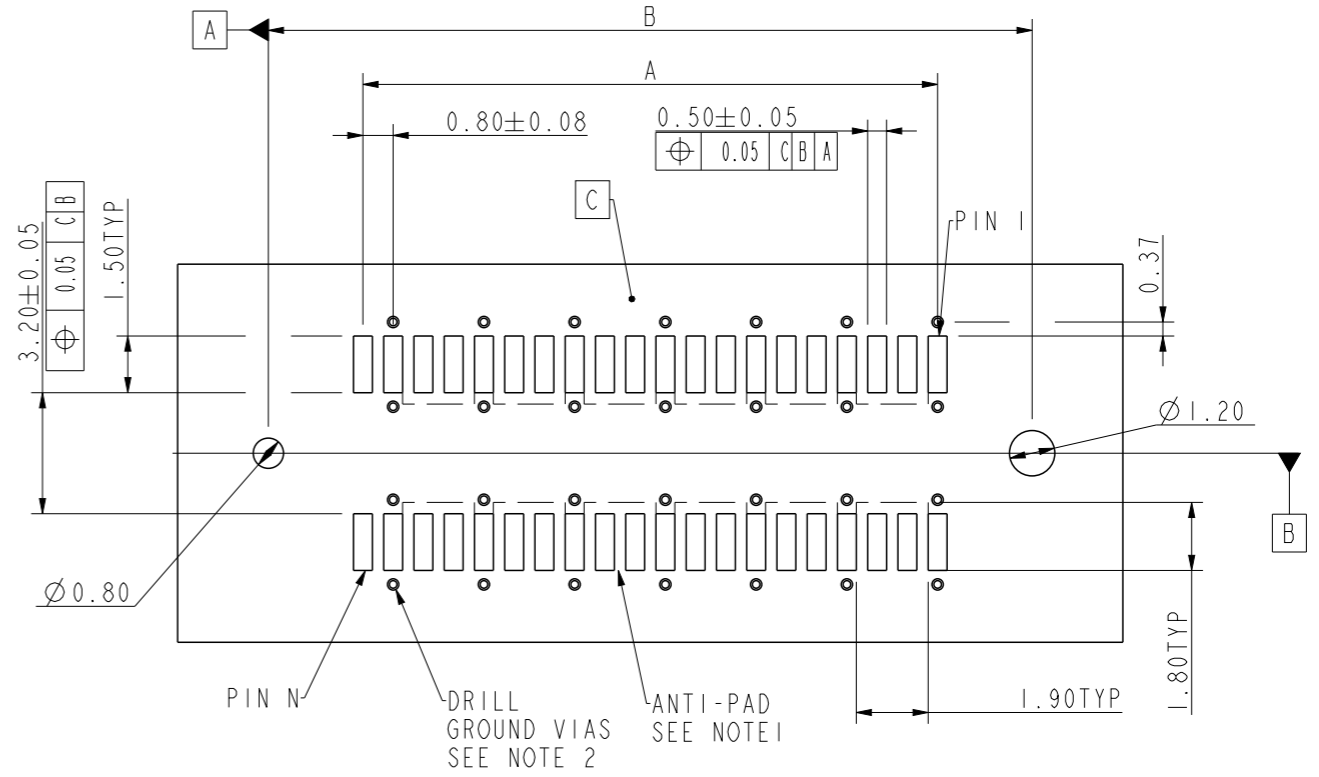
| | | | | | |
|----------------|------------------------|--------------|---------------|-----------|----------|
| projection | mm | size | A3 | scale | 2:1 |
| product family | BERGSTAK HS RECEP2 | ecn no | ELX-N-47124-1 | rel level | Released |
| Amphenol FCI | RECEPTACLE ASSEMBLY | dwg no | 10147613 | rev | D |
| cat. no. | Product - Customer Drw | sheet 3 of 4 | | | |

Amphenol FCI

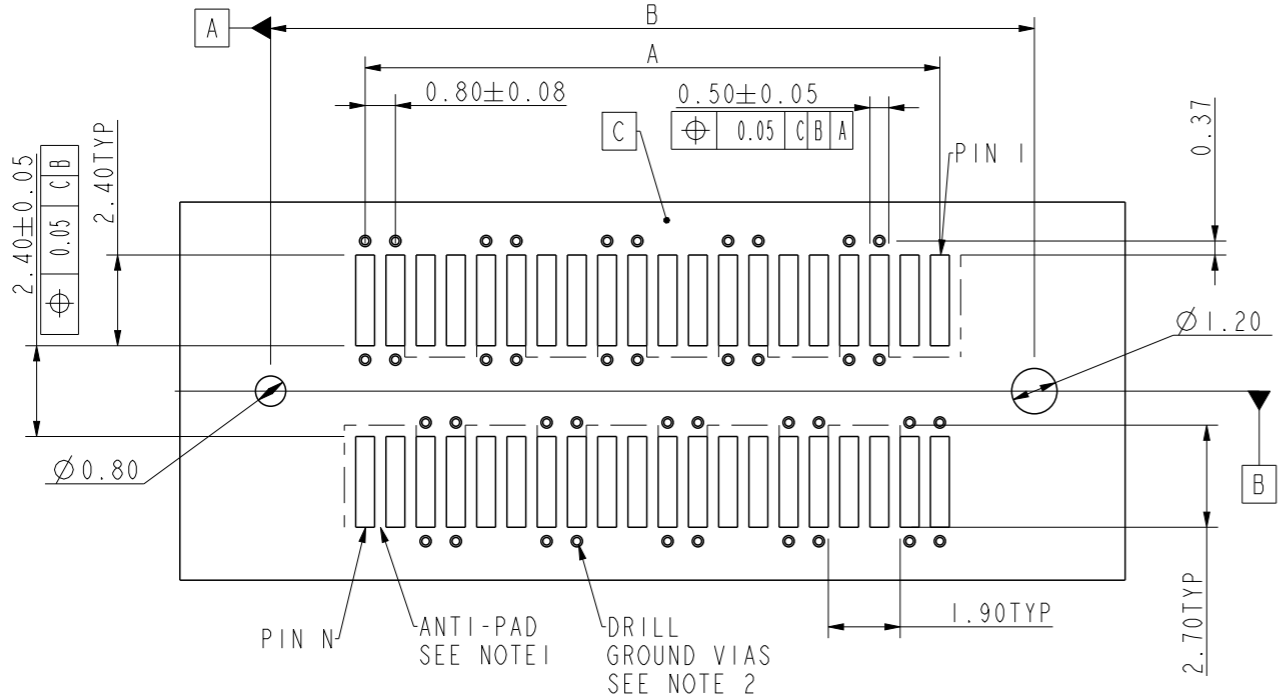
© 2020 Amphenol Corporation



DOUBLE GROUND PATTERN
RECOMMENDED HS PCB LAYOUT



SIGLE GROUND PATTERN
RECOMMENDED HS PCB LAYOUT



DOUBLE GROUND PATTERN
RECOMMENDED STD PCB LAYOUT

| PRODUCT NO. | NO. OF POSITION | DEMENSION | |
|--------------------|-----------------|-----------|-------|
| | | A | B |
| 10147613-041*0**LF | 2X20 | 15.20 | 20.20 |
| 10147613-061*0**LF | 2X30 | 23.20 | 28.20 |
| 10147613-081*0**LF | 2X40 | 31.20 | 36.20 |
| 10147613-101*0**LF | 2X50 | 39.20 | 44.20 |
| 10147613-121*0**LF | 2X60 | 47.20 | 52.20 |
| 10147613-141*0**LF | 2X70 | 55.20 | 60.20 |
| 10147613-161*0**LF | 2x80 | 63.20 | 68.20 |
| 10147613-181*0**LF | 2x90 | 71.20 | 76.20 |

NOTE:

- FOR HS PCB, THE RECOMMENDED VOID SIZE IS 1.9MMx1.8MM;
FOR STD PCB, THE RECOMMENDED VOID SIZE IS 1.9MMx2.7MM;
- THE GROUND VIAS ARE REQUIRED TO ADD TO BOTH SIDES OF GROUND PAD, THE DISTANCE FROM VIA CENTER TO THE PAD EDGE IS RECOMMENDED TO BE 0.37MM.

| | | | | | | | | | | |
|---------------------------------------|---------------------|-------|---------|------------|---------------------|------------------------|--------|---------------|-----------|----------|
| spec ref | - | dr | Bob Gu | 2019/12/31 | projection | mm | size | A3 | scale | 5:1 |
| tolerance std | ISO 406 ISO 1101 | eng | Alan Ni | 2023/01/30 | | | ecn no | ELX-N-47124-1 | rel level | Released |
| TOLERANCES UNLESS OTHERWISE SPECIFIED | | chr | - | - | | | | | | |
| surface | linear | 0.X | ±0.3 | | RECEPTACLE ASSEMBLY | | dwg no | 10147613 | rev | D |
| | | 0.XX | ±0.15 | | BERGSTAK HS 0.8MM | | | | | |
| | angular | 0.XXX | ±0.08 | | cat. no. | Product - Customer Drw | | | | |
| ISO 1302 | | 0° | ±2° | | | sheet 4 of 4 | | | | |