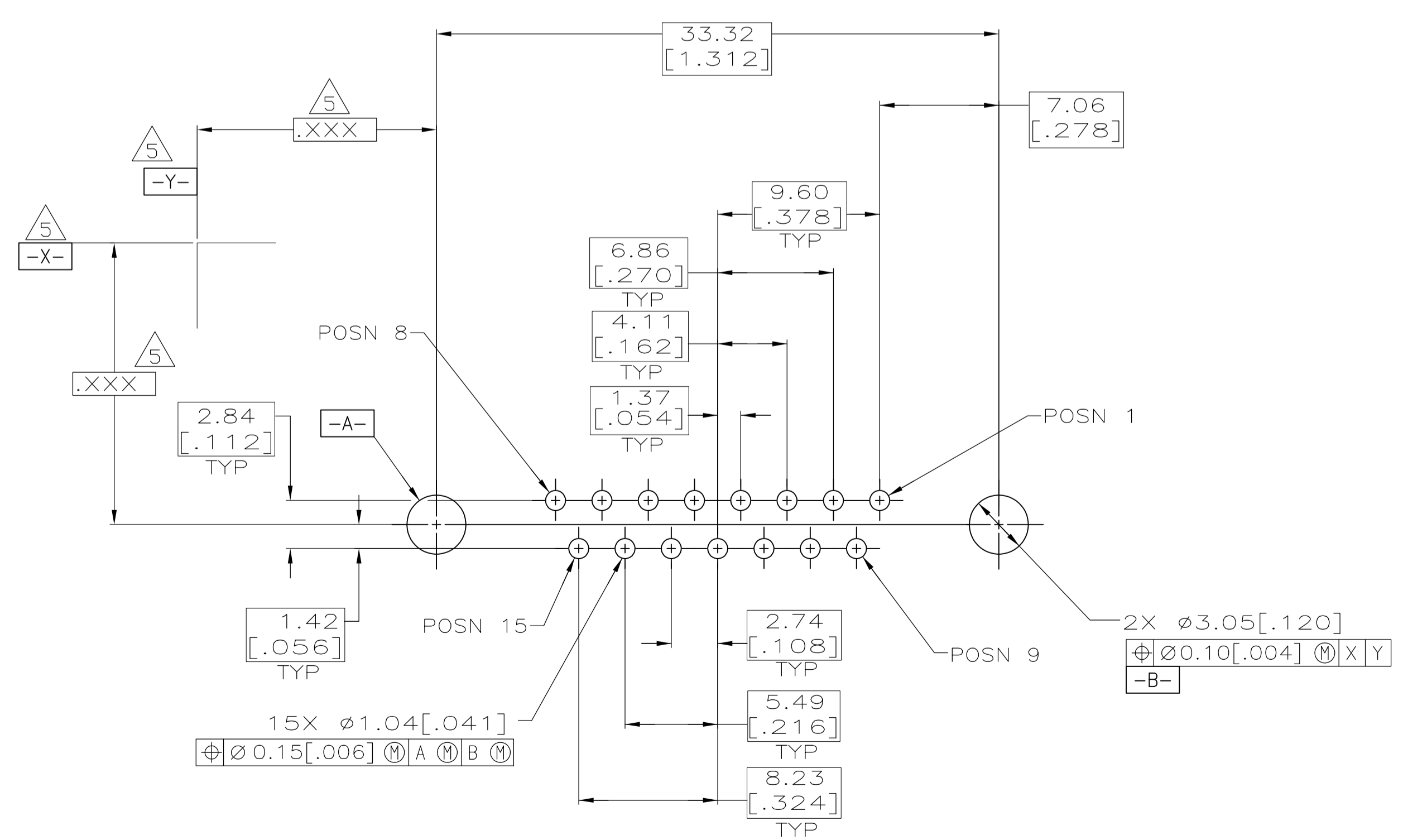
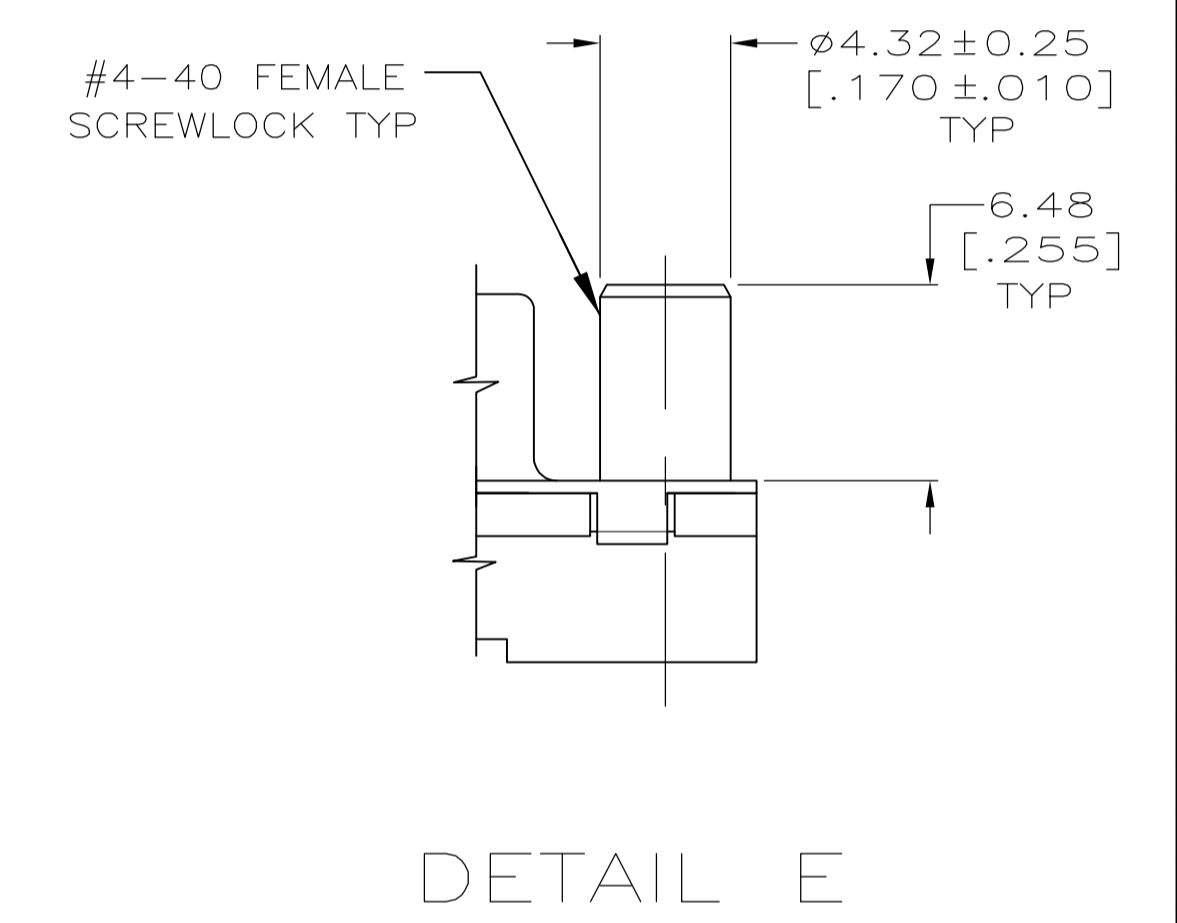
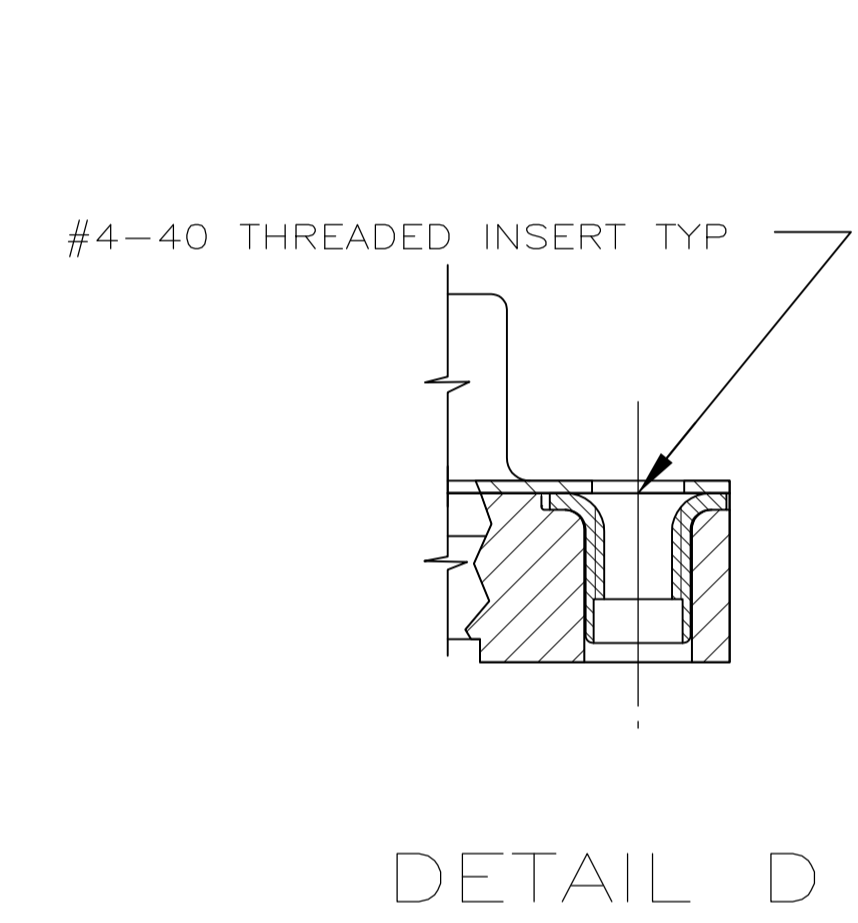
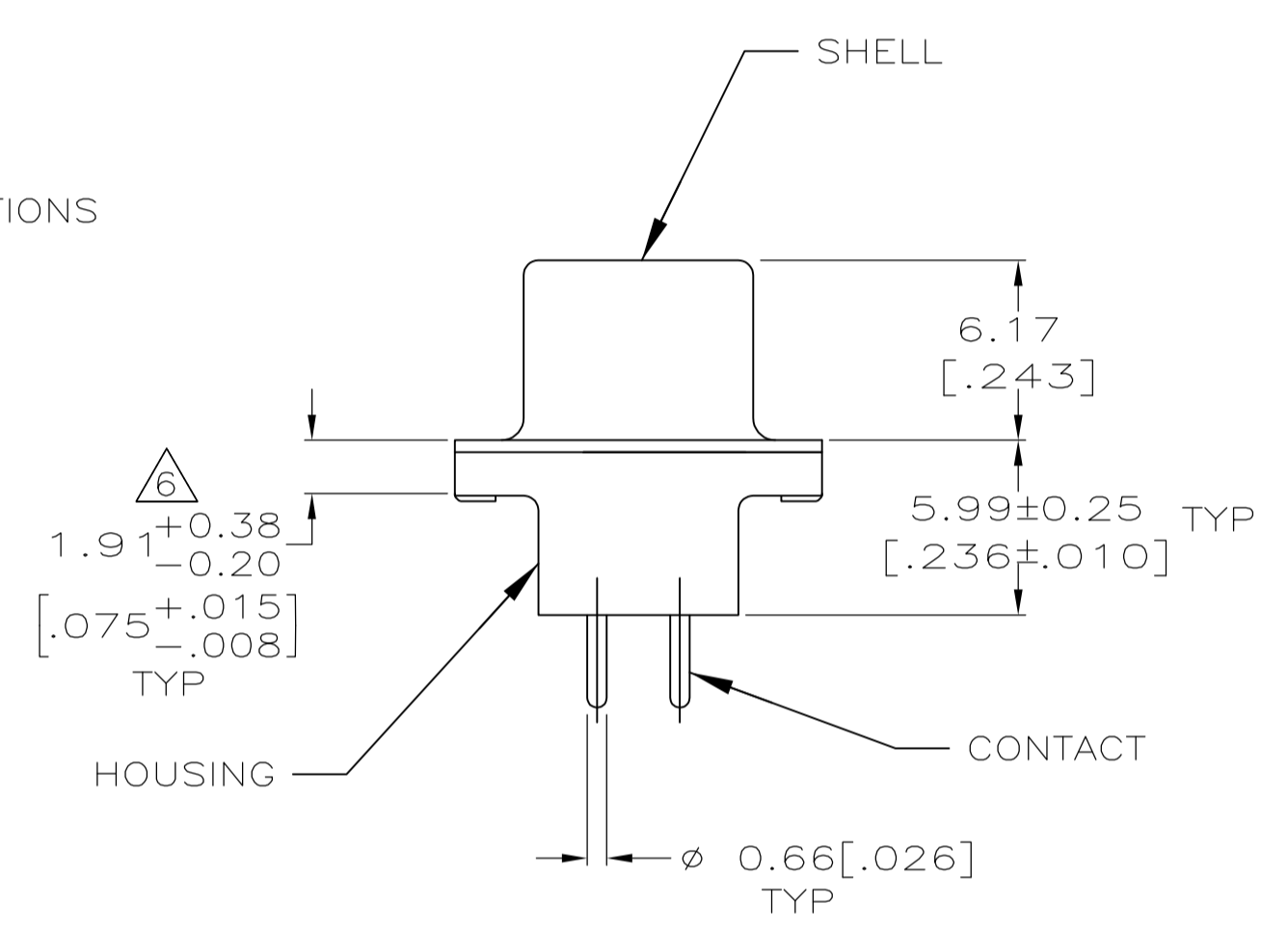
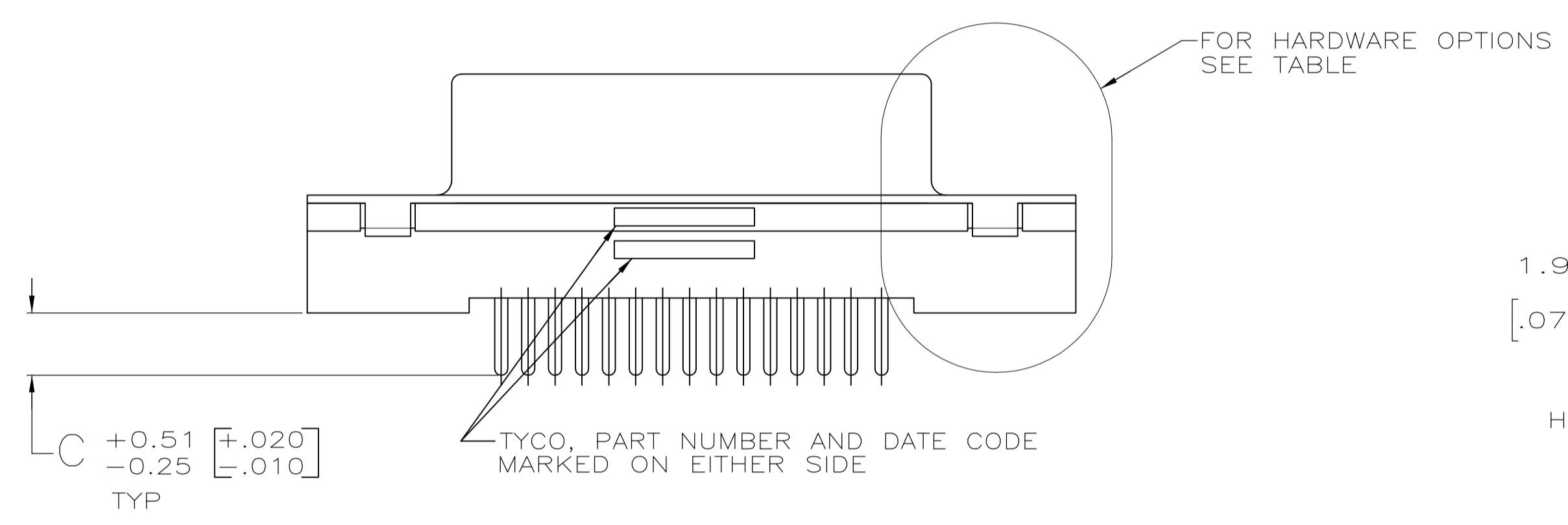


- 1 HOUSING: POLYESTER, UL 94V-0 RATED, COLOR BLACK.
SHELL: CARBON STEEL.
CONTACTS: PHOS BRONZE.
INSERTS: BRASS.
SCREWLOCKS: ZINC.
- 2 SHELL: 5.08µm[.000200] MIN TIN OVER 2.54µm[.000100] MIN COPPER.
CONTACTS: SEE TABLE.
INSERTS: UNPLATED.
SCREWLOCKS: CLEAR CHROMATE COATING.
- 3 GOLD FLASH FOR A LENGTH OF 2.54[.100] MIN FROM MATING END, 2.54µm[.000100] MIN TIN ON BOTH END, BOTH OVER 1.27µm[.000050] MIN NICKEL.
- 4 0.76µm[.000030] MIN GOLD FOR A LENGTH OF 2.54[.100] MIN FROM MATING END, 2.54µm[.000100] MIN TIN ON OPPOSITE END, BOTH OVER 1.27µm[.000050] MIN NICKEL.
- 5 DATUMS AND BASIC DIMENSIONS ESTABLISHED BY CUSTOMER.
- 6 2.79[.110] MAX IN SHELL TAB CLINCH AREAS.



OBSOLETE	PER DETAIL E	4	4.32 [.170]	1-5747299-6
	PER DETAIL E	4	3.18 [.125]	1-5747299-4
	PER DETAIL E	3	3.18 [.125]	1-5747299-3
	PER DETAIL D	3	3.18 [.125]	5747299-7
AS SHOWN		4	4.32 [.170]	5747299-4
AS SHOWN		4	3.18 [.125]	5747299-2
HARDWARE OPTIONS		CONTACTS		PART NO
		FINISH		
		C		

THIS DRAWING IS A CONTROLLED DOCUMENT.		DIN B. LATTUCA 22SEPT05	TE Connectivity
DIMENSIONS: INCHES		CHK S. BOLASH 22SEPT05	
TOLERANCES UNLESS OTHERWISE SPECIFIED:		APPD M. WALMSLEY 22SEPT05	NAME
0 PLC ± -	1 PLC ± -	2 PLC ± 0.13 [.005]	RECEPTACLE ASSEMBLY, SIZE 2, 15 POSITION, FRONT METAL SHELL, WITH OR WITHOUT SCREWLOCKS OR INSERTS, AMPLIMITE HD-20
3 PLC ± -	4 PLC ± -	ANGLES ± -	PRODUCT SPEC 108-40025
MATERIAL		114-40023	APPLICATION SPEC
FINISH		SIZE	SCALE CODE DRAWING NO
1		WEIGHT	A1 00779 C=5747299
2		CUSTOMER DRAWING	RESTRICTED TO
		SCALE 4:1	SHEET 1 OF 1 REV B1

RECOMMENDED PC BOARD MOUNTING DIMENSIONS