



# USA FumeCube

What to specify...

1. Pre-filter

2. Main filter

3. Interfacing Kit

## Single or Dual Arm System

|                              |   |  |  |  |
|------------------------------|---|--|--|--|
| <b>Voltage</b>               | <b>120V ±10%</b>  |  |  |  |
| <b>Vacuum Control</b>        | <b>072095</b>   |  |  |  |
| Wattage                      | 0.107 kW  |  |  |  |
| Frequency                    | 50Hz / 60 Hz  |  |  |  |
| Cabinet height               | 366 mm  |  |  |  |
| Cabinet width (not inc hose) | 308 mm  |  |  |  |
| Cabinet depth (not inc hose) | 294 mm  |  |  |  |
| Cabinet weight (inc filters) | 17 Kg   |  |  |  |
|                              |   |  |  |  |
| Construction                 | Precision engineered brushed stainless steel units. High performance continuous run brushless motors. Quick and simple to relocate. |  |  |  |

1

### Pre-filter Pad



|                    |                   |
|--------------------|-------------------|
| <i>Options:</i>    | <i>Pack of 4:</i> |
| F5 Pack of 4 (std) | 200225            |
| F6 Pack of 4       | 200226            |
| F8/F9 Pack of 4    | 200316            |

2

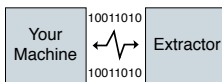
### Main filter



|                          |              |   |              |
|--------------------------|--------------|---|--------------|
| <i>Options:</i>          | <i>Code:</i> | <i>Options:</i>   | <i>Code:</i> |
| HEPA/Chemical (std)      | 110536       | Solvent Lock  | 110543       |
| Chemical                 | 110537       | <i>* Use in combination with 200316</i>   |              |
| Chemical Special         | 110544       | <i>Note: FumeCubes sold prior to December 2008 may require different filters. Please contact your local distributor for advice.</i> |              |
| HEPA/Chemical Cleanroom* | 110538       |   |              |

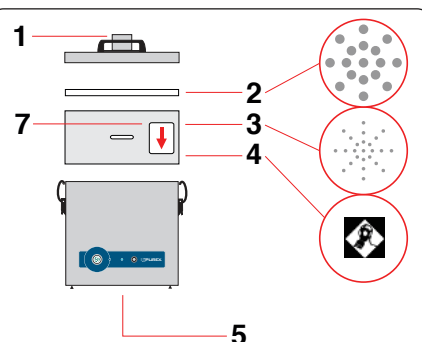
3

### Machine Interfacing (Optional)



Allows the Purex system to interface with a piece of equipment connected to it.

- **Start/Stop Control:** Extraction unit starts/stops when a connected piece of equipment is switched ON/OFF.
- **Filter Blocked Warning:** A signal is sent to a connected piece of equipment to trigger an alert or to shut it down.
- **Remote ON/OFF Switch:** 5M cable & switch



#### Legend:

- 1) Air inlet - 57mm ID - 62mm OD
- 2) Pre-filter.
- 3) Main Filter (HEPA location).
- 4) Main Filter (Carbon location).
- 5) Clean air returned to workplace.
- 7) Filter identification label.

In cleanroom filters, positions 3&4 are reversed.



#### Single arm system supplied with:

- 1 x Filter + pre-filter pad
- 1 x 51mm x 2m flexible hose [black]
- 2 x Connecting cuffs [black]
- 1 x Clamped bracket
- 1 x 38mm stainless steel flexible arm and valve
- 1 x 38mm pen nib nozzle & 1 x conical cowl.



#### Dual arm system supplied with:

- 1 x Filter + pre-filter pad
- 2 x 51mm x 2m flexible hose [black]
- 4 x Connecting cuffs [black]
- 2 x Clamped bracket
- 2 x 38mm stainless steel flexible arm and valve
- 2 x 38mm pen nib nozzle and 2 x conical cowl.

## Controls

### Visual and Audible Filter Blocked Warning

Alerts the operator when a filter starts to block so that a replacement filter can be acquired and downtime can be avoided.

### LED Filter Status

- Green = Filter OK
- Yellow = Filter nearly full
- Red = Filter full, replacement required

Interface with other equipment e.g. a laser optional.

## System Features...

- Automatic electronic flow control - maintains a constant extraction rate even as the filter blocks
- Adjustable airflow
- VariColour filter blocked warning system
- Low capital and running costs
- Quick change pre-filters deliver longer filter life
- Submicronic (HEPA) filtration removes 99.997% of particles down to 0.3 microns
- Activated carbon filtration removes harmful gas
- Simple to install and quiet in operation
- Easy to relocate
- Precision made from stainless steel

## Includes:

- 1 x Main filter
- 4 x Pre-filter pad
- 1 or 2 Arm Kit
- 1 x Power cable

## Accessories

Please see the accessories section at the back of this brochure.