

PCB LAYOUT: COMPONENT SIDE  
RECOMENDED PCB THICKNESS: .062/1.57 Max.

NOTES:

- HOSING MATERIAL: GLASS FILLED LIQUID CRYSTAL POLYMER, UL 94V-0, COLOR: BLACK  
TERMINAL MATERIAL: HIGH COPPER ALLOY
- FINISH:  
OPTION 1: TIN OVER NICKEL OVERALL  
OPTION 2: SELECT 15MICROINCH GOLD AND SELECT MATTE TIN OVER NICKEL.  
OPTION 3: SELECT 30MICROINCH GOLD AND SELECT MATTE TIN OVER NICKEL.
- PRODUCT SPECIFICATION : 2064600000-PS
- TRAY PACK : 2068320000-PK  
TAPE REEL PACK : 2068320001-PK
- MATE WITH RECEPTACLE 206461
- THIS PART CONFORMS TO CLASS 'B' REQUIREMENTS OF COSMETIC SPECIFICATION PS-45499-002.

| THIS DRAWING CONTAINS INFORMATION THAT IS PROPRIETARY TO MOLEX ELECTRONIC TECHNOLOGIES, LLC AND SHOULD NOT BE USED WITHOUT WRITTEN PERMISSION |  |       |  |   |  |  |  |  |  |
|---|--|-------|--|---|--|--|--|--|--|
| DIMENSION UNITS   |  | SCALE |  | CURRENT REV DESC:   |  |  |  |  |  |
| mm  |  | 5:1   |  | <p><b>molex</b></p> <p>V HDR ASSY BANDO<br/>MICRO-FIT + SOLUTION</p> <p>PRODUCT CUSTOMER DRAWING</p> <p>DOCUMENT NUMBER: 2068320000-SD   DOC TYPE: PSD   DOC PART: 000   REVISION: B</p> <p>INITIAL REVISION:<br/>DRWN: SMAHAJANSHET   2018/05/08<br/>APPR: NCSR   2019/04/02</p> <p>DRAFT WHERE APPLICABLE MUST REMAIN WITHIN DIMENSIONS</p> <p>THIRD ANGLE PROJECTION</p> <p>DRAWING: A3-SIZE   SERIES: 206832   MATERIAL NUMBER: SEE TABLE   CUSTOMER: GENERAL MARKET   SHEET NUMBER: 1 OF 3</p> |  |  |  |  |  |
| GENERAL TOLERANCES (UNLESS SPECIFIED)   |  |       |  |   |  |  |  |  |  |
| ANGULAR TOL $\pm 0.5^\circ$   |  |       |  |   |  |  |  |  |  |
| 4 PLACES $\pm$  |  |       |  |   |  |  |  |  |  |
| 3 PLACES $\pm$  |  |       |  |   |  |  |  |  |  |
| 2 PLACES $\pm 0.25$   |  |       |  |   |  |  |  |  |  |
| 1 PLACE $\pm 0.36$  |  |       |  |   |  |  |  |  |  |
| 0 PLACES $\pm$  |  |       |  |   |  |  |  |  |  |

| TIN PLATING     |     |       |    |               |           |
|-----------------|-----|-------|----|---------------|-----------|
| VRT HDR ASSY PN | CKT | A     | B  | PK SPEC       | NOTE      |
| 206832-0201     | 2   | 3.85  | NA | 2068320000-PK | TRAY PACK |
| 206832-0401     | 4   | 6.85  | 3  |               |           |
| 206832-0601     | 6   | 9.85  | 6  |               |           |
| 206832-0801     | 8   | 12.85 | 9  |               |           |
| 206832-1001     | 10  | 15.85 | 12 |               |           |
| 206832-1201     | 12  | 18.85 | 15 |               |           |
| 206832-1401     | 14  | 21.85 | 18 |               |           |
| 206832-1601     | 16  | 24.85 | 21 |               |           |
| 206832-1801     | 18  | 27.85 | 24 |               |           |
| 206832-2001     | 20  | 30.85 | 27 |               |           |
| 206832-2201     | 22  | 33.85 | 30 |               |           |
| 206832-2401     | 24  | 36.85 | 33 |               |           |


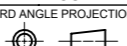
| TIN PLATING     |     |       |    |               |                |
|-----------------|-----|-------|----|---------------|----------------|
| VRT HDR ASSY PN | CKT | A     | B  | PK SPEC       | NOTE           |
| 206832-0221     | 2   | 3.85  | NA | 2068320001-PK | TAPE REEL PACK |
| 206832-0421     | 4   | 6.85  | 3  |               |                |
| 206832-0621     | 6   | 9.85  | 6  |               |                |
| 206832-0821     | 8   | 12.85 | 9  |               |                |
| 206832-1021     | 10  | 15.85 | 12 |               |                |
| 206832-1221     | 12  | 18.85 | 15 |               |                |
| 206832-1421     | 14  | 21.85 | 18 |               |                |
| 206832-1621     | 16  | 24.85 | 21 |               |                |
| 206832-1821     | 18  | 27.85 | 24 |               |                |
| 206832-2021     | 20  | 30.85 | 27 |               |                |
| 206832-2221     | 22  | 33.85 | 30 |               |                |
| 206832-2421     | 24  | 36.85 | 33 |               |                |

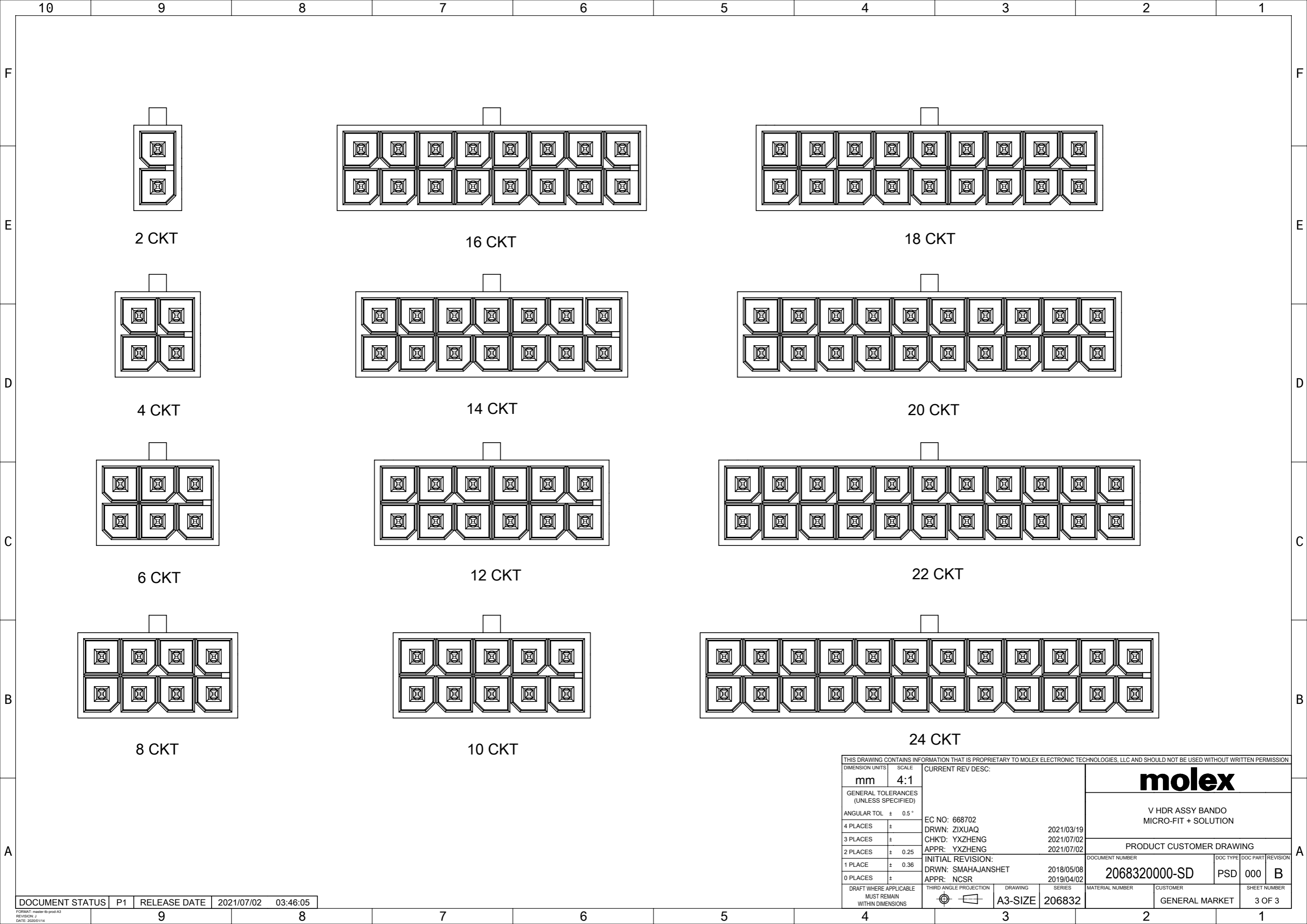
| 15 MICROINCH GOLD |     |       |    |               |           |
|-------------------|-----|-------|----|---------------|-----------|
| VRT HDR ASSY PN   | CKT | A     | B  | PK SPEC       | NOTE      |
| 206832-0202       | 2   | 3.85  | NA | 2068320000-PK | TRAY PACK |
| 206832-0402       | 4   | 6.85  | 3  |               |           |
| 206832-0602       | 6   | 9.85  | 6  |               |           |
| 206832-0802       | 8   | 12.85 | 9  |               |           |
| 206832-1002       | 10  | 15.85 | 12 |               |           |
| 206832-1202       | 12  | 18.85 | 15 |               |           |
| 206832-1402       | 14  | 21.85 | 18 |               |           |
| 206832-1602       | 16  | 24.85 | 21 |               |           |
| 206832-1802       | 18  | 27.85 | 24 |               |           |
| 206832-2002       | 20  | 30.85 | 27 |               |           |
| 206832-2202       | 22  | 33.85 | 30 |               |           |
| 206832-2402       | 24  | 36.85 | 33 |               |           |

| 15 MICROINCH GOLD |     |       |    |               |                |
|-------------------|-----|-------|----|---------------|----------------|
| VRT HDR ASSY PN   | CKT | A     | B  | PK SPEC       | NOTE           |
| 206832-0222       | 2   | 3.85  | NA | 2068320001-PK | TAPE REEL PACK |
| 206832-0422       | 4   | 6.85  | 3  |               |                |
| 206832-0622       | 6   | 9.85  | 6  |               |                |
| 206832-0822       | 8   | 12.85 | 9  |               |                |
| 206832-1022       | 10  | 15.85 | 12 |               |                |
| 206832-1222       | 12  | 18.85 | 15 |               |                |
| 206832-1422       | 14  | 21.85 | 18 |               |                |
| 206832-1622       | 16  | 24.85 | 21 |               |                |
| 206832-1822       | 18  | 27.85 | 24 |               |                |
| 206832-2022       | 20  | 30.85 | 27 |               |                |
| 206832-2222       | 22  | 33.85 | 30 |               |                |
| 206832-2422       | 24  | 36.85 | 33 |               |                |

| 30 MICROINCH GOLD |     |       |    |               |           |
|-------------------|-----|-------|----|---------------|-----------|
| VRT HDR ASSY PN   | CKT | A     | B  | PK SPEC       | NOTE      |
| 206832-0203       | 2   | 3.85  | NA | 2068320000-PK | TRAY PACK |
| 206832-0403       | 4   | 6.85  | 3  |               |           |
| 206832-0603       | 6   | 9.85  | 6  |               |           |
| 206832-0803       | 8   | 12.85 | 9  |               |           |
| 206832-1003       | 10  | 15.85 | 12 |               |           |
| 206832-1203       | 12  | 18.85 | 15 |               |           |
| 206832-1403       | 14  | 21.85 | 18 |               |           |
| 206832-1603       | 16  | 24.85 | 21 |               |           |
| 206832-1803       | 18  | 27.85 | 24 |               |           |
| 206832-2003       | 20  | 30.85 | 27 |               |           |
| 206832-2203       | 22  | 33.85 | 30 |               |           |
| 206832-2403       | 24  | 36.85 | 33 |               |           |

| 30 MICROINCH GOLD |     |       |    |               |                |
|-------------------|-----|-------|----|---------------|----------------|
| VRT HDR ASSY PN   | CKT | A     | B  | PK SPEC       | NOTE           |
| 206832-0223       | 2   | 3.85  | NA | 2068320001-PK | TAPE REEL PACK |
| 206832-0423       | 4   | 6.85  | 3  |               |                |
| 206832-0623       | 6   | 9.85  | 6  |               |                |
| 206832-0823       | 8   | 12.85 | 9  |               |                |
| 206832-1023       | 10  | 15.85 | 12 |               |                |
| 206832-1223       | 12  | 18.85 | 15 |               |                |
| 206832-1423       | 14  | 21.85 | 18 |               |                |
| 206832-1623       | 16  | 24.85 | 21 |               |                |
| 206832-1823       | 18  | 27.85 | 24 |               |                |
| 206832-2023       | 20  | 30.85 | 27 |               |                |
| 206832-2223       | 22  | 33.85 | 30 |               |                |
| 206832-2423       | 24  | 36.85 | 33 |               |                |

|   |  |   |  |   |  |            |  |                 |  |
|---|--|---|--|---|--|------------|--|-----------------|--|
| THIS DRAWING CONTAINS INFORMATION THAT IS PROPRIETARY TO MOLEX ELECTRONIC TECHNOLOGIES, LLC AND SHOULD NOT BE USED WITHOUT WRITTEN PERMISSION |  |   |  |   |  |            |  |                 |  |
| DIMENSION UNITS   |  | SCALE   |  | CURRENT REV DESC:   |  |            |  |                 |  |
| mm  |  | 1:1   |  |  <p>V HDR ASSY BANDO<br/>MICRO-FIT + SOLUTION</p> <p>PRODUCT CUSTOMER DRAWING</p> <p>EC NO: 668702<br/>DRWN: ZIXUAQ 2021/03/19<br/>CHK'D: YXZHENG 2021/07/02<br/>APPR: YXZHENG 2021/07/02</p> <p>INITIAL REVISION:<br/>DRWN: SMAHAJANSKET 2018/05/08<br/>APPR: NCSR 2019/04/02</p> |  |            |  |                 |  |
| GENERAL TOLERANCES (UNLESS SPECIFIED)   |  |   |  |   |  |            |  |                 |  |
| ANGULAR TOL ± 0.5°  |  |   |  |   |  |            |  |                 |  |
| 4 PLACES ±  |  |   |  |   |  |            |  |                 |  |
| 3 PLACES ±  |  |   |  |   |  |            |  |                 |  |
| 2 PLACES ± 0.25   |  |   |  |   |  |            |  |                 |  |
| 1 PLACE ± 0.36  |  |   |  |   |  |            |  |                 |  |
| 0 PLACES ±  |  |   |  |   |  |            |  |                 |  |
| DRAFT WHERE APPLICABLE MUST REMAIN WITHIN DIMENSIONS  |  | THIRD ANGLE PROJECTION  |  | DRAWING   |  | SERIES     |  | MATERIAL NUMBER |  |
|   |  |  |  | A3-SIZE   |  | 206832     |  | SEE TABLE       |  |
| DOCUMENT STATUS   |  | P1  |  | RELEASE DATE  |  | 2021/07/02 |  | 03:46:05        |  |
| FORMAT: master-b-prod-A3  |  | REVISION: J   |  | DATE: 2020/1/14   |  |            |  |                 |  |



2 CKT

16 CKT

18 CKT

4 CKT

14 CKT

20 CKT

6 CKT

12 CKT

22 CKT

8 CKT

10 CKT

24 CKT

|   |  |        |  |  |         |        |  |  |  |                          |         |                |          |              |
|---|--|--------|--|--|---------|--------|--|--|--|--------------------------|---------|----------------|----------|--------------|
| THIS DRAWING CONTAINS INFORMATION THAT IS PROPRIETARY TO MOLEX ELECTRONIC TECHNOLOGIES, LLC AND SHOULD NOT BE USED WITHOUT WRITTEN PERMISSION |  |        |  |  |         |        |  |  |  |                          |         |                |          |              |
| DIMENSION UNITS   |  | SCALE  |  | CURRENT REV DESC:  |         |        |  |  |  | <b>molex</b>             |         |                |          |              |
| mm  |  | 4:1    |  |  |         |        |  |  |  |                          |         |                |          |              |
| GENERAL TOLERANCES (UNLESS SPECIFIED)   |  |        |  | EC NO: 668702<br>DRWN: ZIXUAQ 2021/03/19<br>CHK'D: YXZHENG 2021/07/02<br>APPR: YXZHENG 2021/07/02<br>INITIAL REVISION:<br>DRWN: SMAHAJANSHET 2018/05/08<br>APPR: NCSR 2019/04/02 |         |        |  |  |  | PRODUCT CUSTOMER DRAWING |         |                |          |              |
| ANGULAR TOL   |  | ± 0.5° |  |  |         |        |  |  |  | DOCUMENT NUMBER          |         | DOC TYPE       | DOC PART | REVISION     |
| 4 PLACES  |  | ±      |  |  |         |        |  |  |  | 2068320000-SD            |         | PSD            | 000      | B            |
| 3 PLACES  |  | ±      |  |  |         |        |  |  |  | MATERIAL NUMBER          |         | CUSTOMER       |          | SHEET NUMBER |
| 2 PLACES  |  | ± 0.25 |  |  |         |        |  |  |  | 206832                   |         | GENERAL MARKET |          | 3 OF 3       |
| 1 PLACE   |  | ± 0.36 |  |  |         |        |  |  |  | THIRD ANGLE PROJECTION   | DRAWING | SERIES         |          |              |
| 0 PLACES  |  | ±      |  |  | A3-SIZE | 206832 |  |  |  |                          |         |                |          |              |
| DRAFT WHERE APPLICABLE MUST REMAIN WITHIN DIMENSIONS  |  |        |  |  |         |        |  |  |  |                          |         |                |          |              |