

LOC		DST		REVISIONS			
P	LTR	DESCRIPTION	DATE	DWN	APVD		
D	REV PER	0G3C-0464-03	06OCT03	MB	JO		

D

C

B

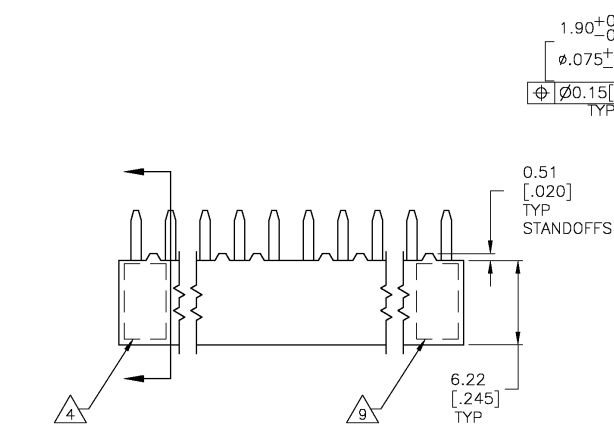
A

D

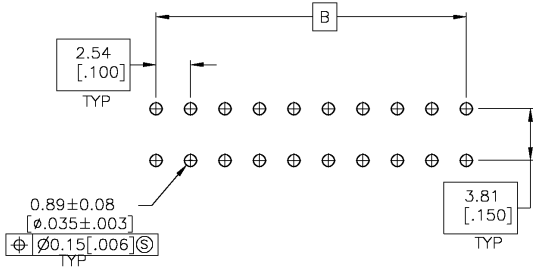
C

B

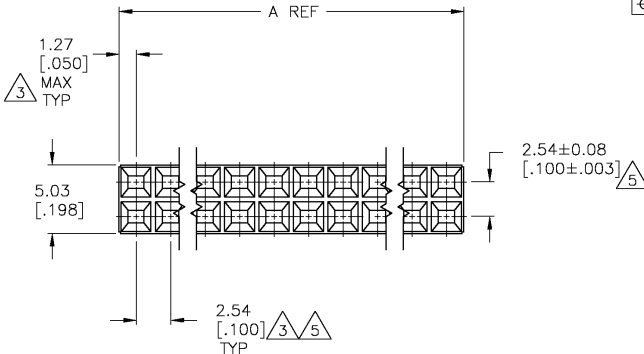
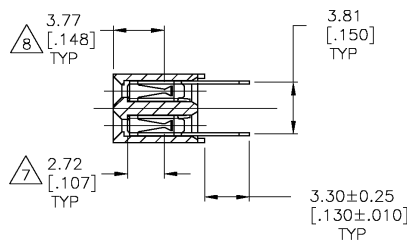
A



PC BOARD LAYOUT FOR BOTTOM ENTRY
PC BOARD THICKNESS 1.57[.062]



PC BOARD LAYOUT FOR TOP ENTRY
PC BOARD THICKNESS 1.57[.062]



99.06[3.900]	101.60[4.000]	80	4-147095-0
96.52[3.800]	99.06[3.900]	78	3-147095-9
93.98[3.700]	96.52[3.800]	76	3-147095-8
91.44[3.600]	93.98[3.700]	74	3-147095-7
88.90[3.500]	91.44[3.600]	72	3-147095-6
86.36[3.400]	88.90[3.500]	70	3-147095-5
83.82[3.300]	86.36[3.400]	68	3-147095-4
81.28[3.200]	83.82[3.300]	66	3-147095-3
78.74[3.100]	81.28[3.200]	64	3-147095-2
76.20[3.000]	78.74[3.100]	62	3-147095-1
73.66[2.900]	76.20[3.000]	60	3-147095-0
71.12[2.800]	73.66[2.900]	58	2-147095-9
68.58[2.700]	71.12[2.800]	56	2-147095-8
66.04[2.600]	68.58[2.700]	54	2-147095-7
63.50[2.500]	66.04[2.600]	52	2-147095-6
60.96[2.400]	63.50[2.500]	50	2-147095-5
58.42[2.300]	60.96[2.400]	48	2-147095-4
55.88[2.200]	58.42[2.300]	46	2-147095-3
53.34[2.100]	55.88[2.200]	44	2-147095-2
50.80[2.000]	53.34[2.100]	42	2-147095-1
48.26[1.900]	50.80[2.000]	40	2-147095-0
45.72[1.800]	48.26[1.900]	38	1-147095-9
43.18[1.700]	45.72[1.800]	36	1-147095-8
40.64[1.600]	43.18[1.700]	34	1-147095-7
38.10[1.500]	40.64[1.600]	32	1-147095-6
35.56[1.400]	38.10[1.500]	30	1-147095-5
33.02[1.300]	35.56[1.400]	28	1-147095-4
30.48[1.200]	33.02[1.300]	26	1-147095-3
27.94[1.100]	30.48[1.200]	24	1-147095-2
25.40[1.000]	27.94[1.100]	22	1-147095-1
22.86[.900]	25.40[1.000]	20	1-147095-0
20.32[.800]	22.86[.900]	18	147095-9
17.78[.700]	20.32[.800]	16	147095-8
15.24[.600]	17.78[.700]	14	147095-7
12.70[.500]	15.24[.600]	12	147095-6
10.16[.400]	12.70[.500]	10	147095-5
7.62[.300]	10.16[.400]	8	147095-4
5.08[.200]	7.62[.300]	6	147095-3
2.54[.100]	5.08[.200]	4	147095-2
-	2.54[.100]	2	147095-1

- 1 HOUSING: FLAME RETARDANT, GLASS FILLED, THERMOPLASTIC, COLOR: BLACK. CONTACT: PHOSPHOR BRONZE
- 2 CONTACT: DUPLEX PLATED 0.25μm[.000010] MIN IN CONTACT AREA, 3.81-7.62μm[.000150-.000300] BRIGHT TIN-LEAD ON LEADS, ALL OVER 1.27μm[.000050] NICKEL
- 3 THESE DIMENSIONS PERTAIN TO CAVITY CENTERLINES ONLY - NOT TO CONTACT LOCATIONS
- 4 PART NUMBER AND DATE CODE ARE MARKED IN APPROXIMATE LOCATION SHOWN.
- 5 TOLERANCE IS NON-CUMULATIVE.
- 6 2 POSITION DATE CODE IS MARKED OPPOSITE SIDE OF TYCO LOGO.
- 7 POINT-OF-MEASUREMENT DIMENSION FOR PLATING THICKNESS (INSIDE CONTACT BEAM).
- 8 POINT-OF-CONTACT DIMENSION.
- 9 TYCO TRADEMARK AND CSA LOGO ARE MOLDED INTO HOUSING, THIS LOCATION.
- 10 NO PART NUMBER MARKING REQUIRED FOR THIS PART.

THIS DRAWING IS A CONTROLLED DOCUMENT.		DWN M. BINNER 06NOV2002		Tyco Electronics Corporation Harrisburg, PA 17105	
DIMENSIONS: MM [INCHES]		TOLERANCES UNLESS OTHERWISE SPECIFIED:		APVD J. OLSON 06NOV2002	
0 PLC ± -		1 PLC ± -		NAME J. OLSON 06NOV2002	
2 PLC ± 0.13[.005]		3 PLC ± -		PRODUCT SPEC 108-25022	
4 PLC ± -		5 PLC ± -		APPLICATION SPEC 114-25018	
ANGLES ± -		FINISH 1		SIZE CASE CODE DRAWING NO A2 00779	
MATERIAL 1		FINISH 2		WEIGHT -	
CUSTOMER DRAWING		SCALE 4:1		SHEET 1 OF 1	